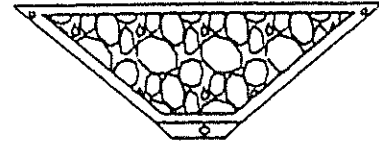
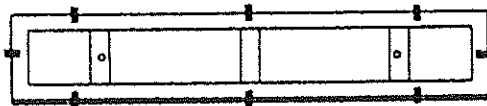


① 2-MAIN METAL FRAME



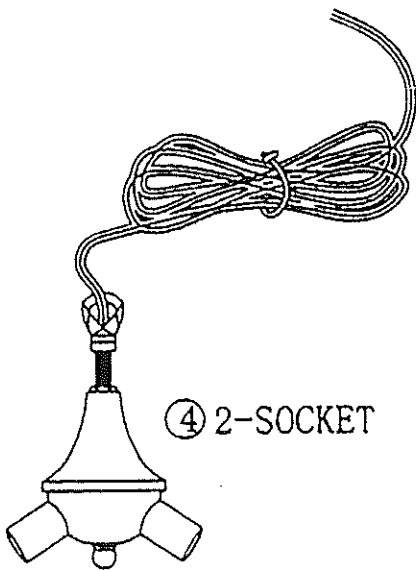
② 2-SIDE METAL FRAME



③ 1-MATAL CROWN



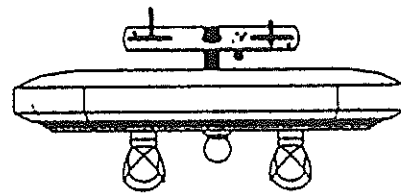
⑤ 4-COLUMN NATS



④ 2-SOCKET



⑥ 8-WING NUTS



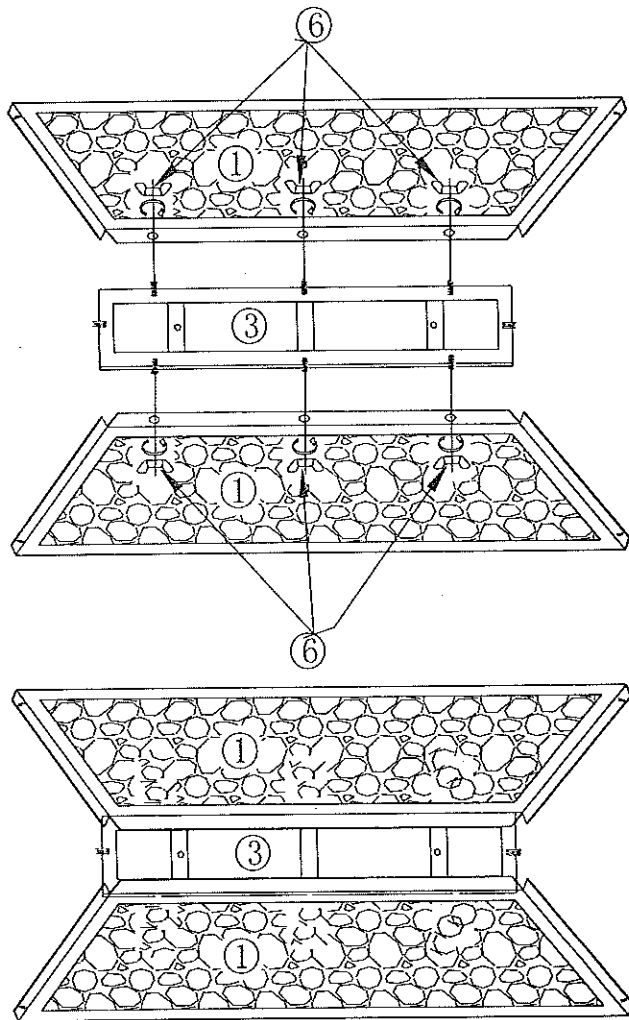
⑦ 1-CANPONY



⑨ Imperial crown

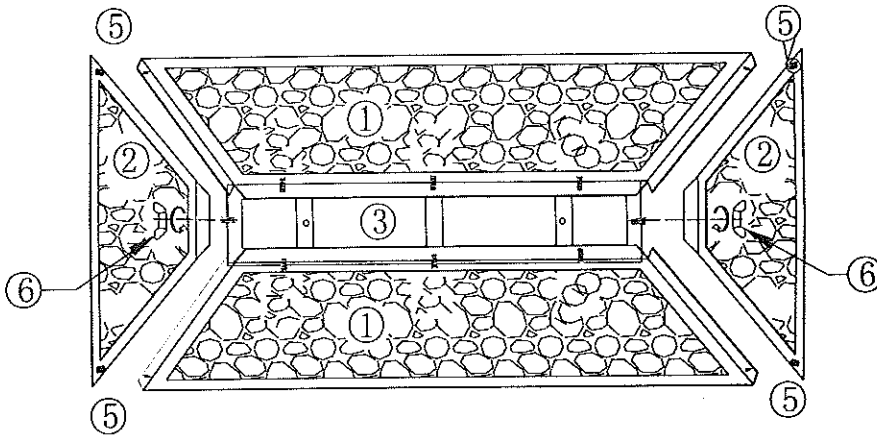


⑧ 2-CHAIN



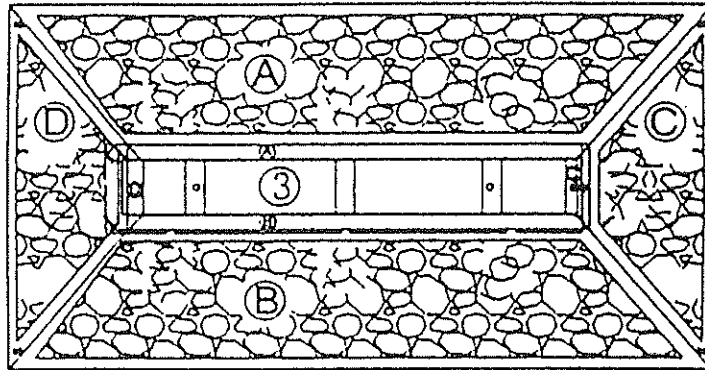
STEP 1, 2

Connect two front metal frames to top metal frame and screw it tightly with thumbscrews.



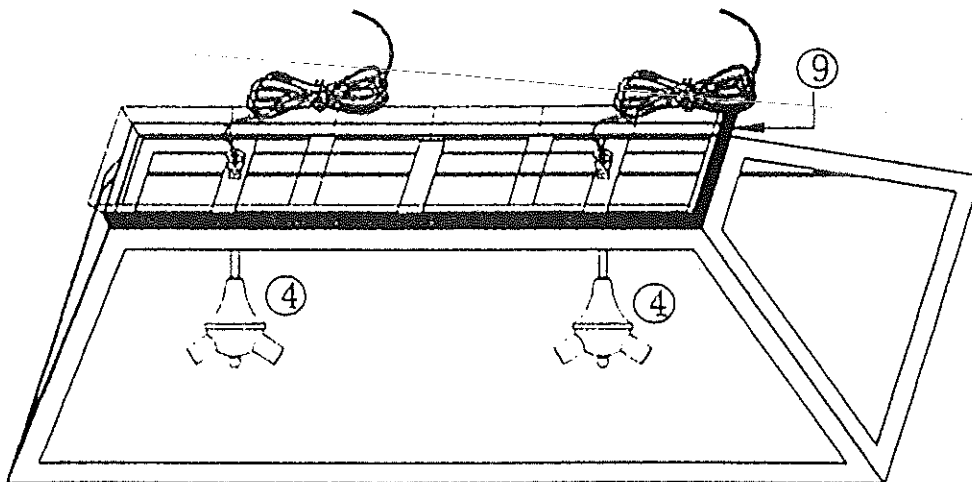
Step 3

Connect two side metal frames to top metal frame by screwing thumbscrews. Then connect them with front metal frames.



Step 4

Assembly two sockets on the bar of crown;



Step 5

Imperial crown installs the coping finally
Assembly the billiard on the roof as uide of the
quality electrician.