



# RECOVEREX

## P3 PRODUCT MANUAL

Email: [support@recoverex.com](mailto:support@recoverex.com)

Phone: 800 970 9405

Website: [www.recoverex.com](http://www.recoverex.com)



**V1.2 - REVISED**

# Contents References

**Warnings**      **3** >

---

**Parts References**      **4** >

---

**Control Panel  
References**      **10** >

---

**Setup Instruction**      **12** >

---

**WiFi/App Setup  
Instructions**      **17** >

---

**Takedown  
Instructions**      **21** >

---

**Water  
Maintenance**      **25** >

---

**Setting Tub Buckle  
Combination**      **27** >

---

**Recommended  
Routine Maintenance**      **29** >

---

**Troubleshooting  
Guide**      **31** >

---

**Limited Warranty**      **36** >

---



# WARNING!

## WARNING

IT IS ESSENTIAL TO CONSULT A HEALTHCARE PROFESSIONAL TO ENSURE YOUR MEDICAL SUITABILITY BEFORE USING THE EDGE TUB. UNDERSTANDING THE ASSOCIATED RISKS, THEIR SEVERITY, AND POTENTIAL CONSEQUENCES WHEN USING THE TUB WITH COLD OR HOT WATER IS CRUCIAL. DROWNING, WHICH CAN BE FATAL, IS A RISK WITH ANY WATER CONTAINER. IT IS YOUR RESPONSIBILITY TO ENSURE THAT MINORS ARE ALWAYS ADEQUATELY SUPERVISED WHILE USING THE EDGE TUB AND THAT ANYONE ENTERING CAN SAFELY REMAIN ABOVE WATER. THE EDGE TUB SHOULD NEVER BE USED WHILE IMPAIRED BY ANY SUBSTANCE THAT MAY AFFECT YOUR ABILITY TO STAY AWAKE, CONSCIOUS, AND MENTALLY ALERT.

WHEN USING COLD WATER, EXERCISE EXTREME CAUTION AND SENSIBLE JUDGMENT TO EXIT THE EDGE TUB BEFORE THE ONSET OF COMPLICATIONS SUCH AS HYPOTHERMIA. AS YOUR BODY BECOMES COLDER, MOVEMENTS AND CIRCULATION MAY SLOW DOWN. USING THE EDGE TUB WITH HOT WATER MAY RESULT IN NAUSEA, DIZZINESS, AND LIGHTHEADEDNESS. TAKE CAUTION AND USE SENSIBLE JUDGMENT TO PREVENT ANY SUCH SIDE EFFECTS, ALWAYS LEAVING THE TUB BEFORE EXPERIENCING ANY SYMPTOMS. YOU ALSO ACKNOWLEDGE THAT YOU WILL BE SOLELY RESPONSIBLE FOR THE HYGIENE, SANITATION, AND MAINTENANCE OF THE EDGE TUB. THE EDGE TUB IS INTENDED SOLELY FOR RECREATIONAL USE AS A COLD OR HOT TUB AND SHOULD NOT BE USED FOR ANY OTHER PURPOSES. THE BEST APPROACH TO AVOID RISKS WHEN USING THE EDGE TUB IS TO REMAIN AWARE OF YOUR PHYSICAL CONDITION AND ERR ON THE SIDE OF CAUTION.

### DROWNING

To minimize the risk of injury, children should be closely supervised by an adult at all times when using this product. Please consult a physician before allowing children to use the tub. Risk of accidental drowning. Take extreme caution to prevent unauthorized access by children. Note that the tub cover is not a safety cover.

### ELECTRICAL

This product is equipped with a ground-fault circuit-interrupter (GFCI) integrated with the power plug. Test the GFCI before each use. To perform the test, ensure the Power Switch on the back of the Chiller is in the "on" position and press the orange "T" Test Button above the Power Switch. The Power Switch should flip to the "off" position. Flip the Power Switch back up to the "on" position. If the test does not cause the Power Switch to turn off, do not proceed and seek support for assistance.

DO NOT USE IF THIS TEST FAILS.

Do not touch electrical outlets with wet hands. Keep any electric appliance at least 5 feet away from the product. Only use this product with a properly grounded 120V/60Hz electrical circuit. Do not submerge the machine or expose it to direct water spray.

### PROP 65

PROP 65 WARNING: THIS PRODUCT CONTAINS CHEMICALS KNOWN TO THE STATE OF CALIFORNIA TO CAUSE CANCER, BIRTH DEFECTS, OR OTHER REPRODUCTIVE HARM.

### HEALTH

Elderly persons, pregnant women, infants, and those with health conditions requiring medical care - especially cardiovascular and neurological - should consult with a physician before using this product.

Hot and Cold Water Immersion while under the influence of alcohol, narcotics, drugs or medicines may lead to serious injury and is not recommended.

Do not use alone.

Long exposure may result in hyper or hypothermia, nausea, dizziness, or fainting.

Do not exceed 5 minutes in cold or 30 minutes in hot water; excessive exposure may be harmful to health.

Always enter and exit the tub slowly and cautiously. Wet surfaces are slippery.

### ADVISORY

Pool owners may need to comply with local or state laws regarding childproof fencing, safety barriers, lighting, and other safety requirements. Customers should contact their local building code enforcement office for more information. Keep hair, fingers, towels, and other items away from the fan. Only professional technicians should work on the system.

## WARNING





# Parts References





## Accessories -

Included with Recoverex Tub purchase.

**Carrying Backpack** - A specially designed backpack to conveniently transport your tub and its components.

**Hand Net** - A net used for capturing surface debris and removing it from the water in the tub.

**Measuring Spoon**- A 30cc Measuring Spoon for precise dosing of metal control, sanitizer and oxidizer.

**Metal Control** - The Sirona Simply Metal Control prevents and removes stains and scale caused by metals in your spa water. It deactivates dissolved metals like copper and iron, ensuring clear water and preventing discoloration and surface staining.

**Oxidizer** - The Sirona Simply Oxidizer is an essential part of the water maintenance protocol for keeping the tub water clean and clear. Please refer to the maintenance instructions for proper usage.

**Sanitizer** - The Sirona Simply Sanitizer is a crucial component of the water maintenance protocol to ensure proper sanitation of the tub water. Please refer to the maintenance instructions for proper usage.

**Test Strips** - The Sirona Simply Test Strips are used as part of the water maintenance protocol to accurately measure and monitor the chemical levels in the tub water. Please refer to the maintenance instructions for proper usage.

**Tub Patch Kit** - A repair kit that includes patches for fixing any punctures that may cause air leaks in the tub.

**Chiller** - The primary unit responsible for cooling, circulating, and filtering the water in the Recoverex system.

**Chiller Fitting Cap** - Protective caps that screw onto the Chiller Inlet and Outlet ports to prevent dust or debris from entering.

**Chiller Hoses** - Flexible hoses that transport water from the Recoverex Tub to the Chiller unit.

### Hose Connection Fittings

- The fittings attached to the ends of each hose, connecting the Chiller Hoses to the Chiller Inlet/Outlet and Tub Valve Fittings.

**Hose O-Rings** - Essential O-rings used in the hose connections to ensure watertight and airtight seals between the Chiller Hoses and Tub or Chiller.

**Chiller Inlet (Red)** - The connection point on the chiller where incoming water enters. It is marked with a red ring.

**Chiller Outlet (Green)** - The connection point on the chiller where outgoing water exits. It is marked with a green ring.

**Control Panel** - The visual display that shows the Tub Temperature, Set Point, and includes Control Buttons for various functions (detailed in Control Panel References).

**Double Action Air Pump** - An air pump specifically designed to inflate and deflate the Recoverex Tub.

**Inflation Hose** - The hose used in conjunction with the Double Action Air Pump to inflate and deflate the Recoverex Tub.



## **External Water Strainer -**

An assembly of parts that prevents debris from entering the Chiller. It connects to the Chiller Inlet (red) and consists of the Water Strainer Cover, Strainer O-Ring, and Inner Water Strainer.

## **Inner Water Strainer -**

A cylindrical mesh element that attaches to the Chiller Inlet (red) and helps filter out larger debris.

## **Strainer O-Ring -**

The O-ring located at the base of the External Water Strainer connection (red) on the Chiller, ensuring a secure and watertight seal.

## **Water Strainer Cover -**

A durable metal cover that securely screws onto the Chiller Inlet (red), providing protection and sealing the Inner Water Strainer in place.

## **Inflation Valve -**

The port used to inflate the Recoverex Tub using the Double Action Air Pump. It includes the Inflation Valve Cap and Inflation Valve Pin.

## **Inflation Valve Cap -**

A protective cap that covers and safeguards the inflation valve on the tub.

## **Inflation Valve Pin -**

The spring-loaded component of the Inflation Valve that becomes accessible when the Inflation Valve Cap is removed.

## **Power Plug -**

The plug that connects the Recoverex system to a power source.

## **Power Switch -**

The switch that toggles the power of the Chiller unit on or off.

## **Storage Strap -**

A strap specifically designed to secure the deflated tub during storage.

## **Tub -**

The inflatable tub that is the core component of the Recoverex system.

## **Tub Cover -**

A lockable cover designed to protect and secure your tub when not in use.

## **Locking Buckles -**

The buckles on the tub cover that fasten and lock the cover to the tub, ensuring its proper closure and security.

## **Tub Fitting -**

The male connection permanently installed on the Tub Water In (green) and Water Out (red) fittings.

## **Tub Valve Fitting -**

The connection elbow/valve that links the Tub Fittings to the Chiller Hoses connected to the chiller. The Tub Valve Fitting consists of the Threaded Collar, Elbow, and Valve.

## **Elbow -**

The 90-degree section of pipe that connects the Connection Ring and the Valve in the Tub Valve Fitting.

## **Threaded Collar -**

The female rotating threaded component on the Tub Valve Fitting that attaches to the Tub Fitting.

## **Valve -**

A stainless steel valve located in the Tub Valve Fitting, controlling the water flow in the system.





**Water Filter Housing** - The assembly housing the Water Filter, including the Upper Water Filter Housing and Lower Water Filter Housing.

**Filter Housing O-ring** - An O-ring located in the Upper Water Filter Housing, creating an airtight connection between the Lower and Upper Water Filter Housings.

**Filter Housing Wrench** - A specialized wrench used when the Lower Water Filter Housing is too tight to loosen by hand.  
\*Please note that the wrench should not be used to tighten the filter housing during setup or filter changes.

**Lower Water Filter Housing** - The clear filter housing that holds the water filter and connects to the back of the chiller (lower clear part).

**Upper Water Filter Housing** - The connection point (upper white part) on the rear of the chiller where the clear water filter housing attaches.

**Water Filter** - A filter designed to remove debris from the water flowing through the chiller. The water filter is placed into the clear Lower Water Filter Housing.



# Accessories



Measuring Cup



Oxidizer



Sanitizer



Test Strips



Tub Patch Kit



Control Panel



Chiller Drain Cap



Chiller Fitting Cap



Chiller Hose



Chiller Hose O-Ring



O-Ring 1



O-Ring 2



O-Ring 3



O-Ring 4



Chiller Inlet



Chiller Outlet





Double Action  
Air Pump



Inflation Hose



Inner Water  
Strainer



Water Strainer  
Cover



Inflation Valve Cap



Inflation Valve Pin



Power Plug



Power Switch



Storage Strap



Tub Cover



Tub Valve Fitting  
(elbow)



Tub Valve Fitting  
(valve)



Tub Valve Fitting  
(threaded collar)



Water Filter  
Housing



Air Valve Wrench



Filter Housing  
wrench



Water Filter



Red Inlet with  
Water Strainer



Red Inlet with  
Water Strainer  
Cover



Water In -  
on tub



Water out -  
on tub



# Control Panel References







## **1 POWER BUTTON**

To turn the chiller ON or OFF, simply hold the power button for 2 seconds.

## **2 MODE BUTTON**

Change the temperature units from Fahrenheit to Celsius by holding the mode button for 5 seconds.

## **3 TEMPERATURE BUTTON**

Press and hold for 1 second to enable temperature adjustment mode.

## **4 WIFI ACTIVATION BUTTON**

Access the WiFi setup mode by pressing and holding the WiFi button for 10 seconds. Remember to download the Tuya app for this step.

## **5 UP ARROW**

Press or hold the up arrow to increase the temperature after pressing the temperature button.

## **6 DOWN ARROW**

Press or hold the down arrow to decrease the temperature after pressing the temperature button.

## **5 6 UP AND DOWN ARROW**

(HOLD): Activate or deactivate the Child Lock by holding these buttons together.

## **7 TUB TEMPERATURE**

Displays the current temperature of your tub.

## **8 SET TEMPERATURE**

Displays the desired temperature set for your tub.

## **9 WATER FLOW INDICATOR**

Monitor the water flow into your tub in liters per minute.

## **10 MODE INDICATOR**

Displays the current operating mode of the chiller (usually "Default" for normal function).

## **11 DEFROST INDICATOR**

Indicates if the chiller is in the defrosting mode with the "ON" or "OFF" display.

## **12 COOL SYSTEM INDICATOR**

Indicates if the chiller is actively cooling with the "COOL" display or on standby (blank).

## **13 COMPRESSOR STATUS (SNOWFLAKE)**

Indicates when the compressor is running and cooling the water.

## **14 WIFI INDICATOR**

Displays the status of the WiFi connection. Solid light indicates a connected status, blinking light indicates setup mode, and no logo indicates a disconnected or not connected status.



# Setup Instructions



# Setup

When installing the Tub outdoors for a prolonged duration, we advise users to choose a sheltered outdoor location for optimal durability. If the Tub is being set up indoors, ensure the placement of a waterproof protection mat beneath the chiller, tub, and hoses to prevent potential harm caused by condensation, splashes and/or water leaks.

## Step 1 Unboxing

Carefully unpack the Chiller and Tub, removing any protective wrapping. Keep the Chiller box for future transportation needs. Choose a flat and smooth surface for the Tub, ensuring it is free from objects that could damage the bottom of your tub. Make sure there is access to a water source and a 120v power supply. Take the Tub out of the Carrying Backpack and remove the Storage Strap. If you have the optional Protection Mat, place it in the desired location. Unfold the Tub in the desired orientation.

## Step 2 Install the Valve Fittings to the Tub

Screw the Threaded Collar of the Valve Fitting onto the Tub Fitting in a clockwise direction.  
\*Avoid using tools and tighten by hand.  
Ensure the correct orientation of the Valve Fitting (see image 2a).



## Step 3 Inflate the Tub

Use the included Double Action Air Pump and connect the Inflation Hose to the "Inflate" side of the Air Pump (see image 3a). Rotate the Inflation Valve Cap counterclockwise to open it. Check that the Inflation Valve Pin is in the depressed (out) position or the air will be released after the Inflation Hose is detached (see image 3b). Connect the Inflation Hose to the Inflation Valve by turning it clockwise. Inflate the Tub until the gauge reads 10 PSI. Avoid overinflating. Once inflated, close the Inflation Valve Cap by turning it clockwise.



A



B



## Step 4 Install the External Water Strainer

Remove the protective Chiller Fitting Caps by rotating counterclockwise. Attach the Inner Water Strainer onto the red "Inlet" fitting of the Chiller by turning it clockwise. Ensure the Strainer O-ring is in place (see image 4a). Place the silver Water Strainer Cover over the Inner Water Strainer and tighten it by hand until flush with the Chiller body.



## Step 5 Connect the Chiller to the Tub

**Important Safety Information: Before proceeding with the installation, please note the following:**

Ensure that the Chiller is not covered and keep it at least 18 inches away from any objects. This is necessary to maintain proper ventilation and prevent overheating.

Check that each end of the Hose Connection Fittings has a Hose O-Ring (4 total). If missing, use one from the spare parts bag to prevent leaks.

- Connect the green "Water In" fitting of the Tub to the green "Outlet" on the Chiller.
- Connect the red "Water Out" fitting of the Tub to the red "Inlet" on the Chiller.

Hand-tighten the Hose Connection Fittings by rotating them clockwise. The threads should easily and smoothly tighten. If you encounter immediate resistance, please attempt attaching the hose again. Hand tighten the fittings until you feel resistance.

Please note: It is important to hand-tighten the Hose Connection Fittings without using any tools. Using tools or over tightening may result in leaking or damage.

## Step 6 Fill the Tub

Before proceeding, ensure all four hose connection points are properly attached. Next, remove the plastic wrapping from the filter and carefully insert it into the Water Filter Housing. Fill the filter housing with water, making sure the Filter Housing O-Ring is securely in place in the Upper Water Filter Housing before installing. Install the Lower Water Filter Housing by turning it counterclockwise (when facing the back of the Chiller) until it is hand-tight. Do not use the filter wrench for tightening, as it is intended only for loosening. Now, it's time to fill the Tub with water up to the indicated "Fill Level" line, taking care not to overfill.

\*Note that excessive water may overflow from the Tub for some users, so adjust the water level according to your preference.

For detailed guidance on maintaining your water quality, including regular filter inspection and instructions on when and how to change it, please refer to the water maintenance instructions for the recommended weekly protocol.





## Step 7 Open valve

After filling the Tub, please verify that the Tub Valve Fitting is in the open (parallel) position (see image 7a). It is crucial to complete this step in order to safeguard the Chiller from any potential damage. Remember to always keep the valve in the open (parallel) position whenever you turn on the unit. Closing the valve while the machine is being turned on can result in permanent damage!



## Step 8 Power on the Chiller

Connect the Chiller to a standard 120v grounded power source with a minimum 15 amp circuit, and proceed to test the GFCI (Ground Fault Circuit Interrupter) functionality. To conduct the test, begin by ensuring that the Power Switch located at the side of the Chiller is in the "on" position. Next, press the orange "T" Test Button situated above the Power Switch. The Power Switch should then move to the "off" position, confirming proper GFCI functionality.

Please proceed to flip the Power Switch back up to the "on" position (see image 8a). If performing the test fails to cause the Power Switch to turn off, please refrain from continuing and reach out to our support team for assistance. Ensure that the Power Plug is positioned in an elevated location, away from water and off the ground. Please refrain from handling the plug with wet hands. You may now activate the Chiller by pressing the "Power On" button on the display screen. During the purging process, the Chiller may take approximately 2-3 minutes to remove air from the system, indicated by the flashing display of "o1.x" or "02.x".

Once this process is finalized, the displayed code will update to reflect the present water temperature, and water will commence flowing from the "Water In" fitting on the Tub, triggering the Chiller to initiate its cooling function. In the event that an "FL" (Flow) error message appears or if this step exceeds a duration of 2-3 minutes, kindly verify that the Valve is open and ensure proper connection of the hose connections and filter housing. If necessary, repeat this step.



## Step 9 Set your temperature

To adjust the temperature set point, simply press and hold the "TEMP" key for 2-3 seconds until the Set Point starts flashing. Then, utilize the up or down arrow keys to select your desired temperature. Press the "TEMP" key once again to confirm the setting. It typically takes approximately 3 hours for your Tub to reach the minimum or maximum temperature, which may vary depending on the ambient temperature and the set point. If you wish to enable the Child lock feature, press and hold both the "Up" and "Down" arrow keys simultaneously until you hear a beep and see a lock symbol appearing on the screen.



## Step 10 Startup water sanitation

Before using the Tub, it is important to treat the water with the startup Sanitizer dose. The recommended startup dose is provided below and should be used whenever the water in the Tub is replaced.

1. Add 15cc (**1/2** Measuring Spoon) of Metal Control into the water  
- Wait 15 minutes

**Note:** Metal Control should only be added during the initial water setup or when you replace the water with fresh water.

2. Add 60cc (**2** Measuring Spoons) of Oxidizer into the water  
- Wait 15 minutes

3. Add 15cc (**1/2** Measuring Spoon) of Sanitizer into the water  
- Wait 15 minutes before entering the tub

\*For the weekly maintenance of clean water in your Tub, please refer to the Water Maintenance Instructions for the appropriate protocol to follow.

## Step 11 Cover your Tub

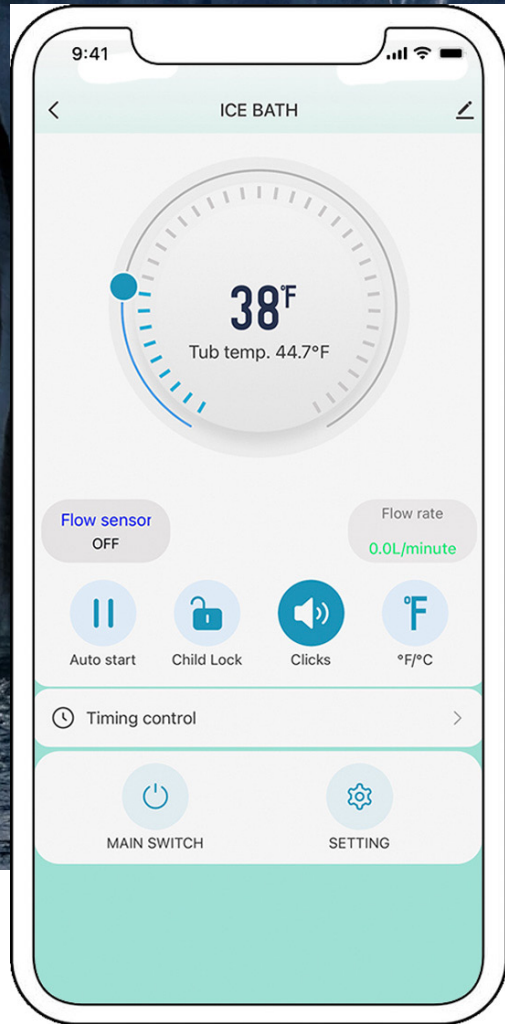
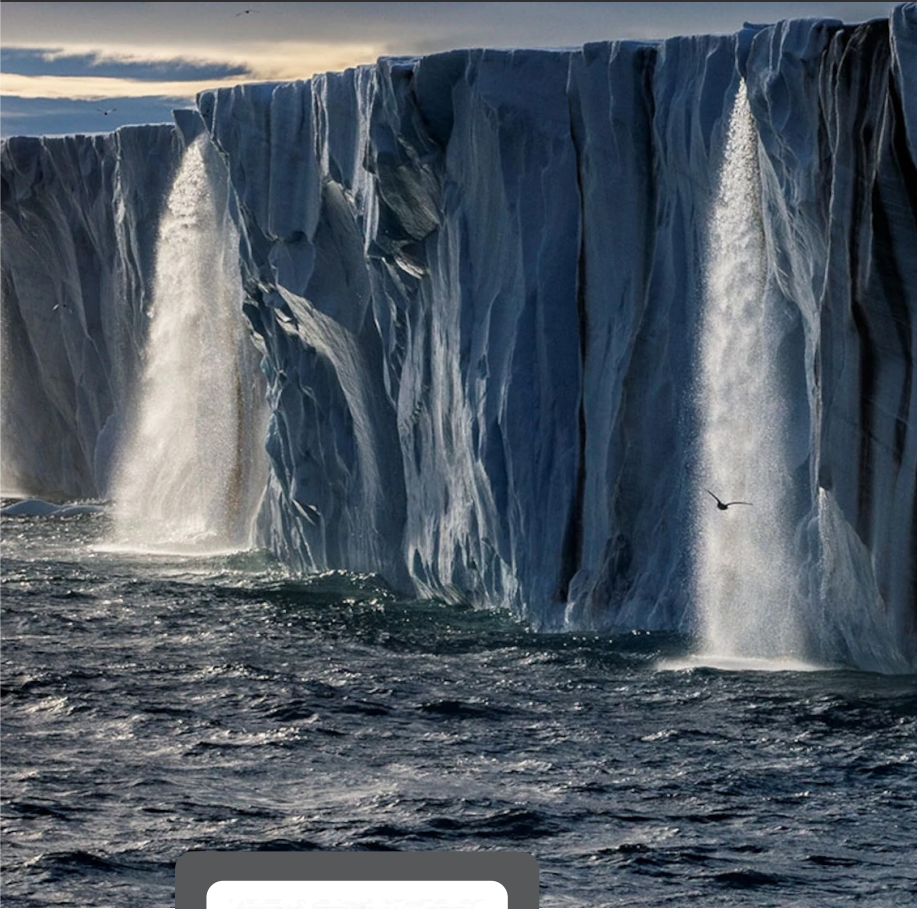
Lastly, if the Tub will not be used immediately, kindly place the Cover on top and secure it with the four Locking Buckles. Please be aware that the default combination code for the Locking Buckles is 0-0. To modify the combination code, please refer to the instructions provided in the "Setting Buckle Code" section (section 6) of the documentation.

Enjoy  
your new  
Recoverex  
Tub!





# WiFi / App



SCAN



<https://apps.apple.com/us/app/tuyasmart/id1034649547>



[https://play.google.com/store/apps/details?id=com.tuya.smart&hl=en\\_US&gl=US](https://play.google.com/store/apps/details?id=com.tuya.smart&hl=en_US&gl=US)



## Step 1

Download and install the Tuya Smart application from your mobile operating system's app store. You can do this by scanning the QR code (on the left) or by visiting the appropriate website below:

## Step 2

1. Turn on your Bluetooth.
2. Turn on your Wi-Fi (2.4 GHz) and connect to your 2.4 GHz network on your mobile device. Please note that the Tuya Smart system only works with 2.4 GHz wireless networks. If your current network uses 5 GHz dual band frequencies, you may need to configure it to 2.4 GHz to allow the Recoverex Chiller to connect.

### Important Note:

The Tuya Smart system is compatible only with 2.4 GHz wireless networks. It is important to note that many modern wireless networks operate on 5 GHz dual band frequencies. To connect the Chiller to your network, you may need to configure your router to support a 2.4 GHz frequency. If you encounter any difficulties during Step 4, please reach out to the manufacturer of your Wi-Fi router for assistance in configuring the network settings.

## Step 3

Proceed to successfully sign up to the Tuya app. Once successfully signed into the Tuya app, Tuya will prompt you with the following:

On Your Phone:

"Tuya Smart" would like to find and connect to the devices on your local network. Click "Allow" (Image 1)

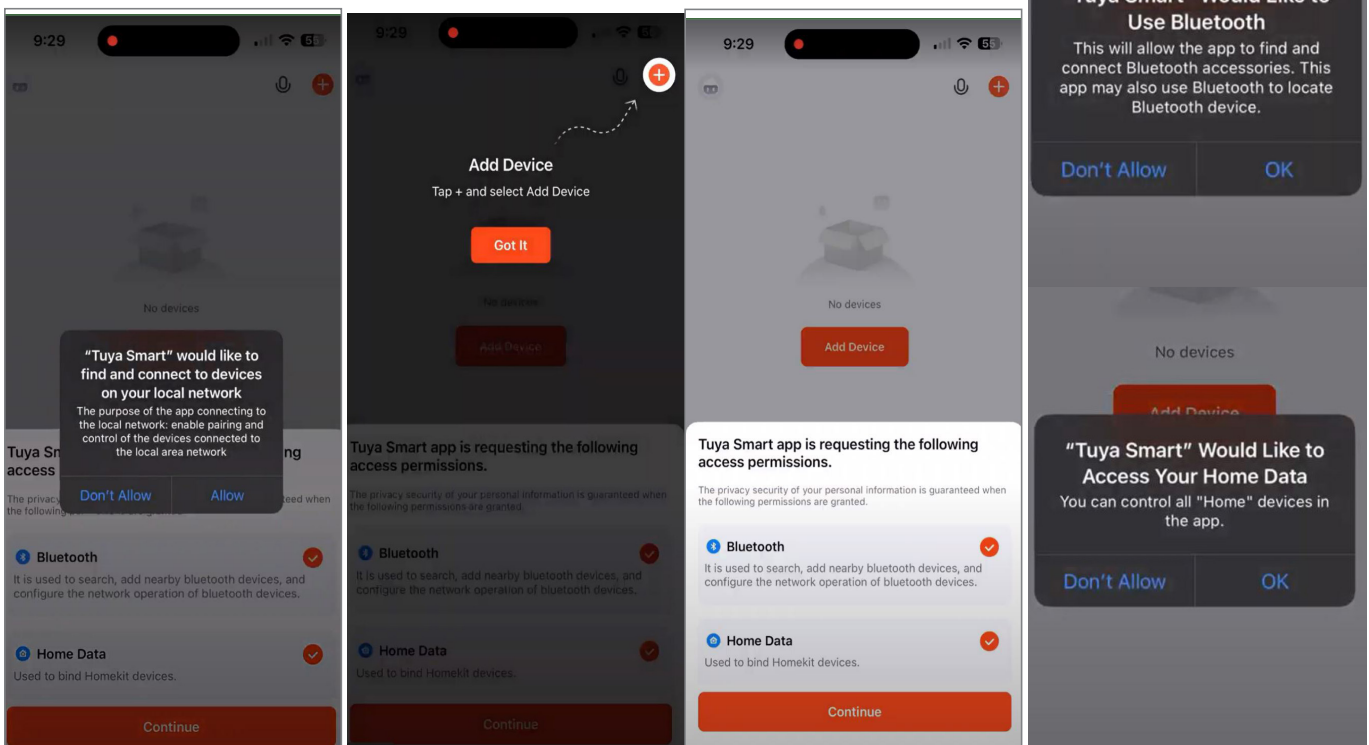
Click "Got it" (Image 2)

Ensure the "Bluetooth" and "Home Data" is checkmarked (Image 3)

Click "Continue" (Image 3)

"Tuya Smart" Would Like to Use Bluetooth, Click "OK" (Image 4)

"Tuya Smart" Would Like to Access Your Home Data, Click "OK" (Image 5)







## Step 4

On Recovered Chiller:

Turn on the Chiller, ensure that the GFCI is in the "ON" position, and if it's not already on.

Press the power button (#1) on the Control Panel until the display activates.

Afterward, press and hold the "WiFi" button (#4) for 5 seconds until the Wi-Fi indicator on the display starts flashing rapidly.

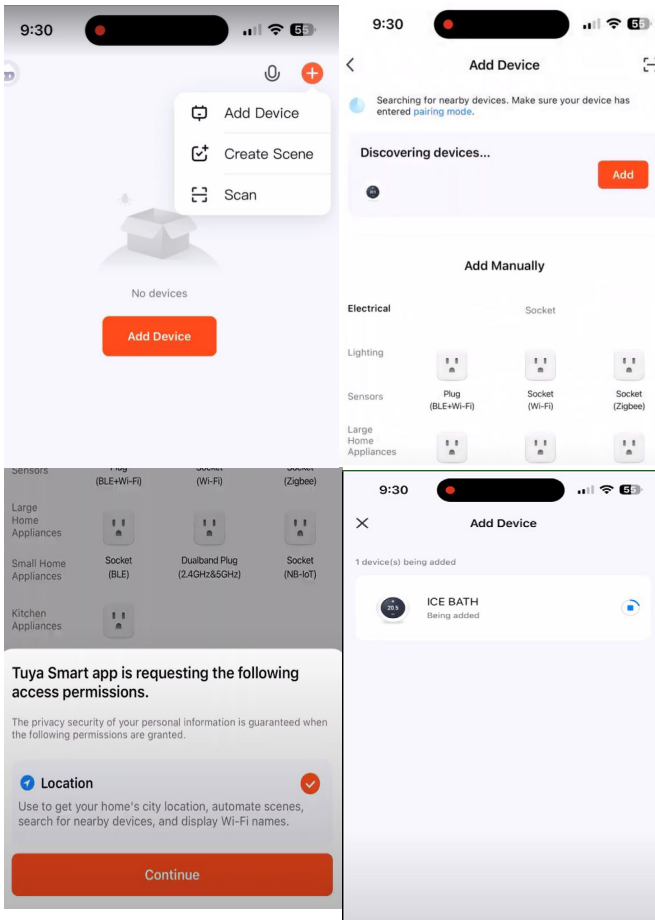
On Your Phone Tuya App:

Click the "+" button and then click "Add Device" (Image 6).

Click "Continue" (Image 7)

Tuya will show Discovering devices. Click "Add" (Image 8)

Tuya will prompt you to connect to your WiFi network. Insert your password and click "Next". (Image 9)



## Step 5

Step 5:

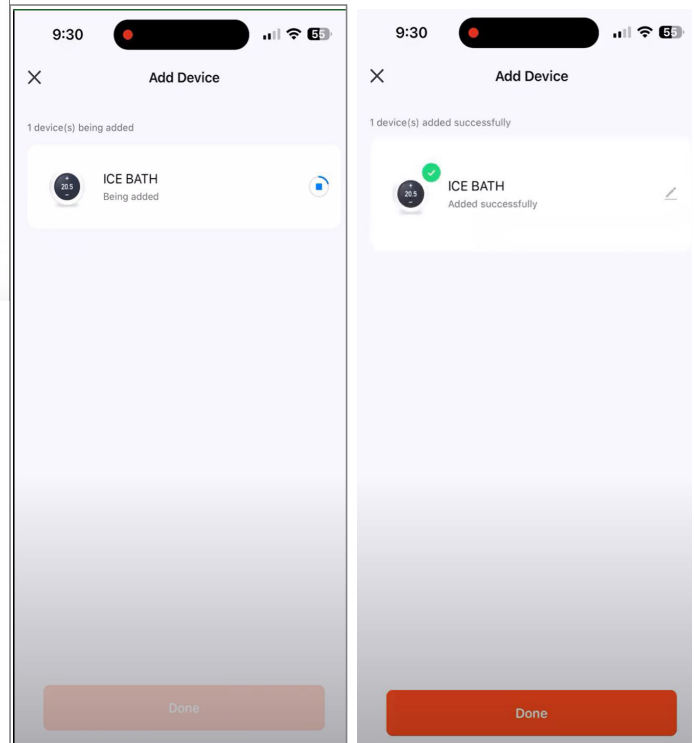
Tuya will search for your Recoverex chiller and initiate a connection to its Wi-Fi network. This process typically takes approximately 1-2 minutes, and you can track the progress with the meter displayed below (Image 10). Once the connection is established successfully, a green checkmark will appear on the left side of the "ICE BATH" icon, and a message confirming the successful connection will be displayed below (Image 11)

On Phone:

Click "Done"

## Step 6

Your Chiller has been successfully connected. If desired, you can change the device's name by selecting the pen and paper icon next to the original name. You will now find the Chiller is played on your home screen, and selecting the device will take you to the control page. Use the circular slider to choose your desired set point from anywhere you prefer (Image 12).





## App Timer Instructions

Step 1:

Open the Tuya app.

Step 2:

Click the "Timing Control" button. The timing control page will open (Image 13)

Click the "Add" button (Image 14)

Click on the days you would like your chiller to be turned "ON".(Image 15)

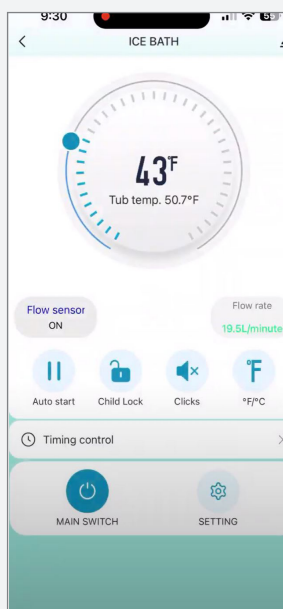
Click on the back "<" arrow and click "SAVE".

Step 3:

To activate the "OFF" function, repeat the steps mentioned in Step 2. Once you've completed the process, your chiller will be ready to automatically turn ON and OFF according to your desired cold plunge schedule. Enjoy the convenience of having your chiller perfectly in sync with your chilling needs!

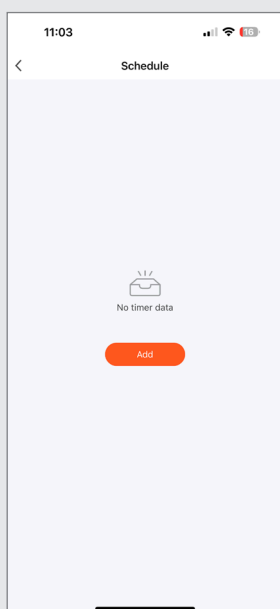
### Step 1

Open the Tuya app and navigate to the timing control option. Open the timing control page.



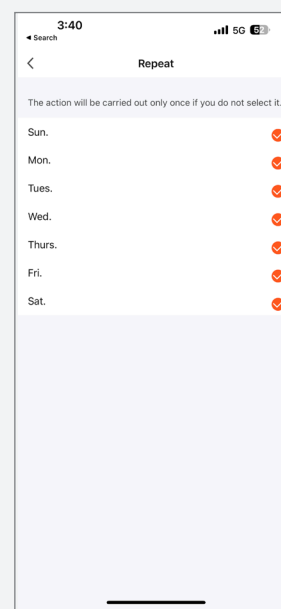
### Step 2

Once the timing control page is open, press and open "add schedule".



### Step 3

Set the desired time and desired settings. then press "save".







# Takedown

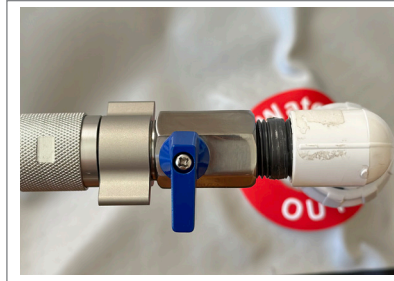


## Step 1 Power Off the Chiller

Deactivate the chiller by switching the GFCI/power switch located on the left side of the chiller to the down/off position.

## Step 2 Close Valve

Turn the valve fitting on the tub's water out valve to the closed (perpendicular) position (see image 1).



## Step 3 Drain Water from the Tub

- Three methods are available for draining the tub: Option (a) is recommended for outdoor use, while options (b) and (c) are recommended for controlled draining of the tub.
- Disconnect the red "Water In" hose from the Chiller by rotating the Hose Connection Fitting counterclockwise. Then, direct the hose to your preferred drainage area and open the valve. Water will flow out of the hose until it reaches the Lower Water Fitting. Turn the tub over to remove the remaining water out of the tub.

- Disconnect both hoses from the Tub by rotating the Hose Connection Fittings counterclockwise. The red "Inlet" hose from the Chiller should be placed inside the tub (see image 2). The green "Outlet" hose from the Chiller should be directed to your desired drainage location. Once properly set up, you can turn the Chiller back on. The Chiller will automatically pump water out until the Tub is completely drained, indicated by the end of the water hose. As the water level decreases, you can slightly tip the Tub to remove the remaining water.



- WARNING:** It is important to immediately turn off the Chiller once the Tub has been fully drained to prevent any damage to the Chiller unit.
- For effective water drainage, we highly recommend acquiring a submersible Sump pump (image 2). Connect your garden hose to the pump and take care to submerge the pump into the water. Ensure that the end of the hose is directed towards your desired drainage location. Once the pump is properly positioned, plug it in to initiate the water drainage process. Should you require additional guidance or suggestions concerning Sump pumps, please don't hesitate to contact our dedicated support team.



## Step 4 Disconnect 4 Hoses

Once the Tub has been drained, disconnect the hoses from both the Tub and Chiller by rotating the Hose Connection Fittings counterclockwise. Finally, unplug the Chiller.

## Step 5 Dry the Tub

To prevent mildew, ensure thorough drying of the Tub's inside, outside, and bottom using a towel. If the Tub hasn't been cleaned, now is an ideal opportunity to clean it with mild soap and water. After cleaning, wipe it down with a dry towel.

## Step 6 Deflate the Tub

To release the air from the Tub, start by removing the Inflation Valve Cap with a counterclockwise turn. Press the Inflation Valve Pin to allow the air to be released, keeping in mind that the air release can be forceful. To remove the remaining air, attach the Inflation Hose to the "Deflate" side of the Double Action Hand Pump. Before deflating the Tub, ensure that the Inflation Valve Pin is in the depressed (out) position (see image 3). Connect the Inflation Hose to the Inflation Valve with a quarter turn clockwise to attach securely. Deflate the Tub using the hand pump until all air has been removed, then remove the inflation hose with a quarter turn counterclockwise. Finally, replace the Inflation Valve Cap by turning it clockwise. If you need to remove the Tub Valve Fittings, rotate the Threaded Collar counterclockwise.



## Step 7 Fold the Tub

The Tub can be folded for storage. Begin by folding the branded "Recoverex" panel of the Tub inward, allowing the the end sides of the Tub to fold towards the center. Next, fold the back side of the Tub over the branded side, making the Tub flat. Fold the right side towards the center, aligning the crease towards the center of the right Water Fitting. Repeat the same folding process for the left side. Now, you should have a trifolded Tub. With one hand, hold the trifolded Tub while using the other hand to place the Storage Strap beneath it. Fasten the Storage Strap and tighten it securely (see image 4).





## **Step 8 Pack the Tub in Backpack**

To pack everything into the backpack, follow this order: Begin by placing the Tub inside, followed by the Tub Cover, Double Action Air Pump, and lastly, the Hoses.

## **Step 9 Drain the Chiller**

Take your chiller outside for drainage. Plug your Chiller into a grounded power supply. Activate the GFCI to the on/up position to turn on the chiller and press the power button to turn the Chiller on. Allow the chiller to run for approximately 1 minute, during which you will notice water being purged from the back outlet of the chiller. Once the water flow decreases significantly, switch off the chiller from the Control Panel and turn the GFCI to the off/down position. Proceed to unplug the chiller. Unscrew the Lower Water Filter Housing by turning it clockwise with your hands, remove the filter, and empty the water. Reinstall the Lower Water Filter Housing. Remove the External Water Strainer and place the protective Chiller Fitting Caps on the Inlet/Outlet connections of the chiller.

A large, stylized graphic of a blue underwater scene. The top half shows a wavy surface of water, and the bottom half is filled with numerous small, light blue bubbles rising towards the surface. The overall color palette is various shades of blue, from light cyan to deep navy.

**Ready,  
Set,  
Plunge.**



# Water Maintenance Instructions

## Initial Setup (new water)

- 1. Add 15cc (1/2 Measuring Spoon) of Metal Control into the water  
Wait 15 minutes
- Note: Metal Control should only be added during the initial water setup or when you replace the water with fresh water.
- 2. Add 60cc (2 Measuring Spoons) of Oxidizer into the water  
Wait 15 minutes
- 3. Add 15cc (1/2 Measuring Spoon) of Sanitizer into the water  
Wait 15 minutes before entering cold plunge tub.



# Weekly Maintenance

**Note: To ensure the optimal performance of your Recoverex Chiller/Tub and to maintain clean and clear water, it is important to follow three simple steps for weekly maintenance. These steps can be completed in approximately 15 minutes. The steps are as follows:**

## Step 1 Check Water Chemistry

- Note: Depending on the number of plunges performed per week, follow either the Medium or Heavy instructions for Step 1.
- Oxidizer: For Medium Use (5-7 plunges a week):
  - Add 30cc (1 Measuring Spoon) of Oxidizer
  - Wait 15 minutes OR
  - For Heavy Use (7+ plunges a week):
    - Add 60cc (2 Measuring Spoons) of Oxidizer. Wait 15 minutes-
- Test Strip + Sanitizer: Immerse the Test Strip in water for 2 seconds at a depth of 6 inches. Remove the Test Strip with the pads facing up and shake it once to eliminate excess water. After waiting for 10 seconds, compare the color of the Sanitizer (SAN) line on the Test Strip to the color chart on the back of the bottle. If the SAN level falls below the "OK" range, add 10cc (1/3 Measuring Spoon) of sanitizer. Wait for 15 minutes and repeat the test. If needed, add more sanitizer accordingly.
- Note: Adding every 10cc or 1/3 Measuring Spoon of sanitizer will increase the Sanitizer (San) level by 10 Parts Per Million (PPM). Your SAN level should be 30 - 50.
- Alkalinity, pH, and Calcium levels are typically adjusted automatically when adding SAN. However, if for any reason the desired levels cannot be reached, please consider purchasing the balancers from our website. Among these, maintaining the pH within the appropriate range is particularly important.

**WARNING: Remember to open the Tub valve before turning the Chiller back on to prevent any damage!**

## Step 2 Inspect and clean External Water Strainer

- To begin, turn off the Chiller and close the Tub Valve by turning the valve handle perpendicular to the valve body.
- Next, detach the bottom red "Inlet" Chiller Hose from the Chiller. Twist the Water Strainer Cover counterclockwise to remove it and inspect the Inner Water Strainer for any debris. If any foreign materials are found, remove them using a brillo pad or rough sponge if needed.
- Before reattaching the Water Strainer Cover, ensure that the Strainer O-ring at the base of the threads is present and undamaged.

## Step 3 Check and replace Water Filter as needed

- To access the Water Filter, rotate the Lower Water Filter Housing clockwise when facing the back of the Chiller.
- If the water filter is dark brown or the flow rate reading on the chiller display (bottom left corner) is below 15 L/min, it is necessary to replace the filter with a new one.
- When changing the filter, completely empty the Lower Water Filter Housing and refill it to the top with fresh water.
- Before reinstalling the filter housing, ensure that the Filter Housing O-ring in the Upper Water Filter Housing (white part) is present and undamaged.



A full-page background image of a massive glacier with jagged, blue-tinged ice walls. In the foreground, a body of turquoise water is filled with numerous icebergs of various sizes. A small boat is visible in the middle ground. The sky is clear and blue.

# Setting Tub Buckle



Use of Buckle Combination Lock is recommended for all users, but especially for those with children in the household

The original code is preset to

**“00”**

1. How to Configure the Combination for the Buckle Lock
2. It is recommended that all users, particularly those with children in the household, utilize the Buckle Combination Lock.
3. The original code is “00”.
4. To change or set the code, follow these steps:
5. Locate the pin on the side of the lock and press it down using a jeweler’s screwdriver, pen, or toothpick. While keeping the pin depressed, rotate the dial to your desired number. If the dial does not function properly after adjusting the code, you can directly push the opposite side. Repeat this process for each side, assigning one number to each side.
6. Repeat the above steps for each buckle.





# Recommended Routine Maintenance





To ensure the longevity of your Recoverex Tub, it is recommended to perform maintenance on your Chiller and Tub on a regular basis. This maintenance protocol will help ensure that the Chiller functions as expected and that the water quality of the Tub is kept clean and clear. The steps below detail out the recommended maintenance, which should be performed every three months.

## Tub

1. Disconnect the Tub from the Chiller.
2. Drain all water from the Tub and Chiller Hoses.
3. Using mild soap and water, wash down the inside and outside of the Tub using a washcloth or soft sponge. Place the Chiller Hoses inside the Tub and run soapy water through them.
4. Rinse Tub and Chiller Hoses off with clean water.
5. Allow Tub and Chiller Hoses to air dry completely; preferably in direct sunlight.
6. Any marks or scuffs on the Tub can be removed by lightly scrubbing with a moistened Magic Eraser. Do not scrub aggressively or it may damage the material, and do not use on any logos or printed areas.
7. Check air pressure of the Tub by connecting the Double Action Air Pump and refilling to 10 PSI.
8. Check the area where the Tub was located for any signs of mildew buildup and clean if necessary. If large amounts of mildew buildup are noticed, the Tub may need to be placed on a material that can breathe to allow water to evaporate.
9. Refill with water and perform Initial Sanitizer protocol to sanitize the new water.

## Chiller

### Descaling

1. Disconnect the Chiller Hoses from the Tub. Ensure Tub Valve Fittings are in the closed (perpendicular) position if the Tub still contains water.
2. Place both ends of the Chiller Hoses into a 5 gallon bucket or similar container. Fill with distilled white vinegar (cleaning vinegar) and water at a 1:4 ratio. So for a 5 gallon bucket, fill 1 gallon vinegar, and 4 gallons water, being careful to leave room for water to circulate and not overflow.
3. Turn on the Chiller and allow it to circulate water for 30 minutes.
4. Turn off the Chiller and empty the bucket of water. Refill with clean water. Place Chiller Hoses back in the bucket and run the Chiller for another 30 minutes. The descaling process is now complete.

### Housing Maintenance

1. With a soft cloth, wipe down the exterior of the Chiller with mild soap and water.
2. Wipe off all soap residue with damp cloth.
3. With Chiller Off, inspect fan and remove any debris that may be on or around the fan shroud.

A full-page background image of a glacier's edge. Large, jagged icebergs of various shades of blue and white are scattered across the water. The sky is a mix of blue and orange, suggesting a sunset or sunrise, with a small white moon visible in the upper left. The water is dark blue with some white foam from the icebergs.

# Troubleshooting Guide





# Water Circulation Troubleshooting

## Step 1

If your Chiller is experiencing issues with water circulation or if you encounter the Control Panel code (Code: o 1) mentioned in Step 1 Reference, please follow the steps below to diagnose and resolve the problem. The displayed code appears when the Chiller is initially started and during the priming process to establish water circulation. This screen is generally normal to see, and it can take up to 3 minutes for water circulation to be established, especially if the Chiller or Chiller Hoses were recently drained.

If, after 3 minutes, water circulation is still not established, please check each of the following steps. You can test the Chiller in between each step.

A

Check to ensure the Tub Fitting Valve is in the open (parallel) position and that the hoses are connected securely without any leaks.

B

Check to ensure the Chiller and Tub hoses are connected correctly:

- a) The green "Water In" fitting of the Tub should be connected to the green "Outlet" on the Chiller.
- b) The red "Water Out" fitting of the Tub should be connected to the red "Inlet" on the Chiller.

C

Inspect the Hose O-Rings located at each end of the Hose Connection Fittings. Ensure that they are properly seated at the bottom of the threaded fitting. When attaching the hoses, tighten the connections until you feel slight resistance and the hose no longer wiggles at the connection point. It is important to exercise caution with the green Chiller "Water In" fitting as it is sensitive to overtightening. Avoid using tools to tighten the connection.

D

Ensure that both the Water Filter and Inner Water Strainer are clean and free of debris. Refer to our Maintenance Page for instructions on how to clean and replace these parts. It is recommended to proactively replace the Water Filter, even if it appears clean, as minerals can cause blockages that may not be visibly evident

E

Take out the Lower Water Filter Housing and verify the presence and condition of the Filter Housing O-Ring in the Upper Water Filter Housing (white part). If your Lower Water Filter Housing has a purple tint, also check for the presence of the lower O-ring. When reinstalling the Lower Water Filter Housing, fill it with water up to the top and tighten with your hands until you feel a slight resistance. Avoid overtightening, as it can cause the gasket to deform and potentially damage the O-Rings. Check to ensure the Strainer O-Ring on the External Water Strainer is intact and undamaged. If needed, replace the O-Ring using the spare parts kit. When securing the Water Strainer Cover, hand-tighten it until it reaches its stopping point. Refer to image 2 for reference. If the above steps do not resolve the issue, please move on to the next step:

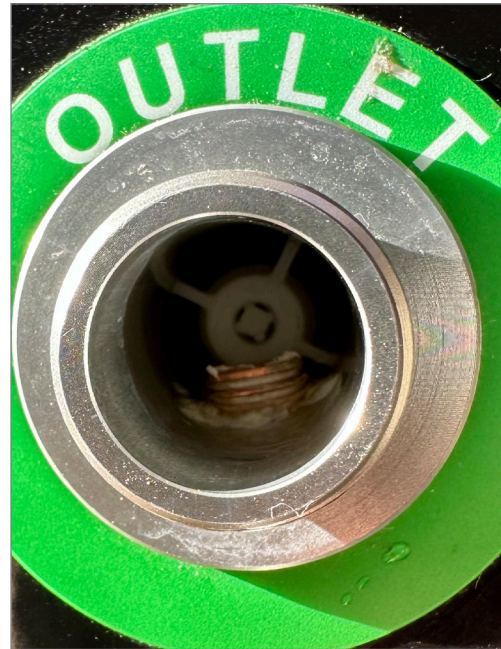


## Step 2 Check Outlet Valve Pin

If you observe that the Chiller is attempting to prime but no bubbles are coming out of the Tub Water-In Fitting, it could indicate that the Check Valve inside the Chiller's outlet port is stuck in the closed position, hindering water flow. To resolve this issue, follow these steps

- 1) Close the Tub Fitting Valve by rotating it to the Closed (perpendicular) position to the Valve body.
- 2) Remove the Outlet Chiller Hose and inspect the little pin in the valve. If the pin is stuck outward (toward you), gently press on it using a small screwdriver. You should feel or hear a small click, indicating that the Check Valve has returned to its proper position.
- 3) Reinstall the Chiller Hose, open the Tub Fitting Valve, and attempt to use the Chiller again.

These steps will help ensure proper water flow through the Chiller and resolve any issues caused by a stuck Check Valve



## Step 3 Expel Trapped Air in Chiller

If you have recently disconnected a Chiller Hose from either the Chiller or Tub, such as for cleaning the Inner Water Strainer, it is possible for an airlock to form within the Chiller. To resolve this issue, you can release the airlock by following these steps:

- 1) Loosen the Lower Water Filter Housing by unscrewing it completely until it is off.
- 2) Fill the housing with water, ensuring it reaches the top.
- 3) Reinstall the Lower Water Filter Housing by securely tightening it with your hands, turning it counterclockwise until it is firmly in place.

By loosening and refilling the Lower Water Filter Housing, any trapped air within the system will be released, allowing for proper water flow and preventing further issues caused by airlocks.

**If you cannot resolve the issue with the corrective steps above, please contact [support@Recoverex.com](mailto:support@Recoverex.com) and our stall will help you!**



# OTHER TROUBLESHOOTING INFORMATION:

## **E3/FU: NO WATER**

Press Mode (second button). This will restart the water circulation cycle.

See "Water Circulation Troubleshooting Guide" in the user guide for detailed steps to resolve

## **Tub Deflates When Inflating with Pump**

Ensure the inflation pin is in the out position before connecting the hose. If the pin is not coming in the out position, hold with finger and pull towards you slightly. If the issue persists, please call 800-970-9405

## **Tub Deflates Over Time:**

Air temperature changes may cause the tub to deflate slightly. If the tub is deflated significantly, inflate the tub with the hand pump provided to 10 PSI.

If you tried the steps above and the tub keeps deflating, your tub might have a leak.

Use a spray can with water+small amount of dish soap. Spray the tub on all locations until you see bubbles from the punctured area of the tub. Once the air leak is found, mark and dry the area and use a repair kit provided to patch the area.

## **Chiller Wont Power On**

Ensure chiller is plugged into an outlet  
Ensure GFCI has not tripped. Turn back on if it has.

Note: If GFCI is still turning off, ensure there is no water on any connection points to electricity.

Force chilling power on

While the chiller is off. Press the power button once then hold MODE and TEMP button until the fan and chiller turn on.

## **WiFi Not Working**

Ensure the WiFi connection is 2.4ghz.

Ensure password is correct to the WiFi connection.

Ensure the chiller is in range with the WiFi connection point.

Ensure Tuya Smart app has internet connection.



### **Tub Is Difficult to Get Into Bag -**

Ensure all the air is removed from the tub when deflating

Ensure you are properly folding the Tub. Please follow the instructions in the "Takedown" portion of the guide.

### **Cannot Connect Chiller to WiFi -**

Ensure you are connecting to a 2.4ghz network. The chiller will not connect to a 5ghz network.

Ensure Chiller is in range of your WiFi signal.

Ensure your Tuya app has internet connection.

### **Error Code: E2/HH - Water temperature is too high.**

Wait for the water temperature to cool down and then select "Mode" (second button) to cancel this error code.

### **Water Has Become Cloudy -**

If the water looks like it is green and bubbly, your water might have heavy metals and is counter reacting with the OZONE filtration.

- Add 15cc (1/2 Measuring Spoon) of Metal Control into the water; Wait 15 minutes

- Add 60 CC (2 Measuring Spoons) of Oxidizer; Replace water if above steps fail.

### **Error Code: E1/FL/FU**

There is too much air inside the water circulating loop:

Ensure all connection points on the tub and chiller have an O ring and are tight. Tighten each connection point by hand one-by-one with your hand and ensure there is no air escaping.

Click the MODE touch button to cancel this error code and continue running the ice bath.

If the issue comes up again, go over the "Water Circulation Troubleshooting Guide" portion in the user manual to resolve this issue.

### **Error Code: E3/FU - Water flow is low.**

See Water Circulation Troubleshooting instructions above for detailed steps to resolve.

### **Error Code: E4/AA Temperature sensor T4 failure -**

Contact Recoverex Support.

### **Error Code: E5/PA Temperature sensor T3 failure -**

Contact Recoverex Support.

### **Error Code: CH2 Temperature sensor T2 failure -**

Contact Recoverex Support.

### **Chiller is Making Loud Noise**

Turn off chiller by pressing the POWER button on the display.

Unplug the chiller from the power outlet  
CHECK/CLEAN filter and strainer

### **Hose Connections Leaking:**

Securely tighten all four connection points by hand, two on the tub and two on the chiller.

Close the Valve Fitting on the tub by positioning it perpendicular to the valve body. Disconnect all four connection points and verify that O rings are present in the hoses. If any O ring is missing, replace it using one from the spare parts bag.

Note: Water may flow out of the connection points if there is water inside the tub and chiller.

WARNING: Before turning on the chiller, make sure to open the valve. Failure to do so can result in permanent damage to the chiller.





# Limited Warranty

## 1-YEAR LIMITED WARRANTY - RESIDENTIAL

- **TUB Structure (1 Year):** The Recoverex cold plunge is covered by a one-year warranty against defects in the spa tub, including water loss, blisters, cracks, or delamination of the interior surface caused by faulty materials or workmanship from the original date of purchase.
- **Equipment and Controls (1 Year):** The pumps, chiller, and control system of the Recoverex cold plunge are warranted for one year from the original date of purchase against malfunctions caused by defects in materials or workmanship.
- **Plumbing Components (1 Year):** Plumbing components of the Recoverex cold plunge are warranted for one year from the original date of purchase against leaks caused by defects in materials or workmanship.
- **Factory Installed Parts (1 Year):** Factory-installed parts are covered by a one-year warranty against defects in materials or workmanship from the original date of purchase.

This Limited Warranty is null and void if non-Genuine Recoverex branded Parts & Accessories, including all aftermarket parts, repair parts, and accessories, are installed, as determined by Recoverex or its designated representative. Genuine Recoverex Parts & Accessories are designed to ensure optimal performance and function, meeting the highest standards of quality, durability, and performance.

## PERFORMANCE

To request service for a defect covered by this Limited Warranty, promptly notify Recoverex and take necessary measures to protect the spa from further damage. Upon providing proof of purchase, a designated service representative will rectify the defect according to the terms and conditions of this Limited Warranty. There will be no charge for parts or labor required to repair the defect. However, granting access to perform the repair is the responsibility of the spa owner. Reasonable charges for repairman travel mileage may apply. If the spa needs to be transported to a repair facility and reinstalled, the cost of removal and reinstallation will be the responsibility of the Recoverex owner. The Manufacturer reserves the right to choose between repairing or replacing any covered part. If a replacement Recoverex is provided, it will be of equal value to the original, and you will be responsible for the costs of removing the original spa, shipping the replacement from the factory, and delivering and installing the replacement. The replacement spa will carry the remaining warranty period of the original spa.

## LIMITATIONS

This Residential Limited Warranty is void if the spa is used in a commercial setting, subjected to alteration, neglect, misuse, abuse, or freight damage caused by the common carrier. Additionally, any attempted repairs by unauthorized individuals, damage caused by accidents, acts of God, or other causes beyond the Manufacturer's control will render this warranty void. Neglect, misuse, and abuse include any improper installation, operation, or maintenance of the Recoverex spa that deviates from the instructions in the provided owner's manual. This includes failure to maintain proper water chemistry and balance, use of abrasive or inappropriate cleaners, non-genuine parts and accessories, and any attachment or installation made after the date of manufacture. Commercial applications of Recoverex spas are not covered by this warranty. The owner assumes liability for repairs performed by unauthorized parties. Work performed on units outside of the United States is not the responsibility of Recoverex.

## LIMITATIONS ON IMPLIED WARRANTIES

This Limited Warranty supersedes all other warranties, whether express or implied, at law or in fact. Only the Manufacturer or its designated representative, using authorized Recoverex parts, is authorized to perform warranty service. No agent, dealer, distributor, service company, or other party has the authority to modify, change, or extend the terms of this Limited Warranty. The Manufacturer is not responsible for any statements or representations beyond what is included in the authorized literature or specifications provided by Recoverex.

## DISCLAIMERS

The Manufacturer and its representatives are not liable for incidental or consequential damages and shall not be held responsible for any injury, loss, cost, or other damage, whether incidental or consequential, arising from any defect covered by this Limited Warranty. This includes, but is not limited to, loss of spa use, removal costs of defective products, water damage, or any other potential damages, even if the Manufacturer was made aware of the possibility of such damages. The Manufacturer's liability under this Limited Warranty, if any, is limited to the original amount paid for the defective product. The coverage of this Limited Warranty commences from the original date of purchase and does not extend beyond the stated time periods for any reason. These disclaimers apply equally to any service provided by the Manufacturer and its designated representatives.

## LEGAL RIGHTS

This Limited Warranty provides specific legal rights and is the sole warranty applicable to Recoverex products, except as expressly stated herein or implied by applicable state and federal laws. Additional rights may vary from state to state. Some states may not allow limitations on the duration of an implied warranty, disclaimers of certain warranties, or the exclusion or limitation of incidental or consequential damages, thereby overriding some of the above limitations.



# RECOVEREX

## CONTACT SUPPORT

Email: [support@recoverex.com](mailto:support@recoverex.com)

Phone: 800 970 9405

Website: [www.recoverex.com](http://www.recoverex.com)

