

Creating Your Most Special Place.

WWW.PLANIVADESIGN.COM

MEET The Loft Hideout

Designed as a charming garden cabin ideal for brief getaways, this welcoming 240-square-foot A-frame retreat incorporates a lofted bedroom space.

Emphasizing passive solar efficiency and cost-effective construction, it provides an open and inviting atmosphere for short garden retreats, complete with a loft serving as the bedroom.

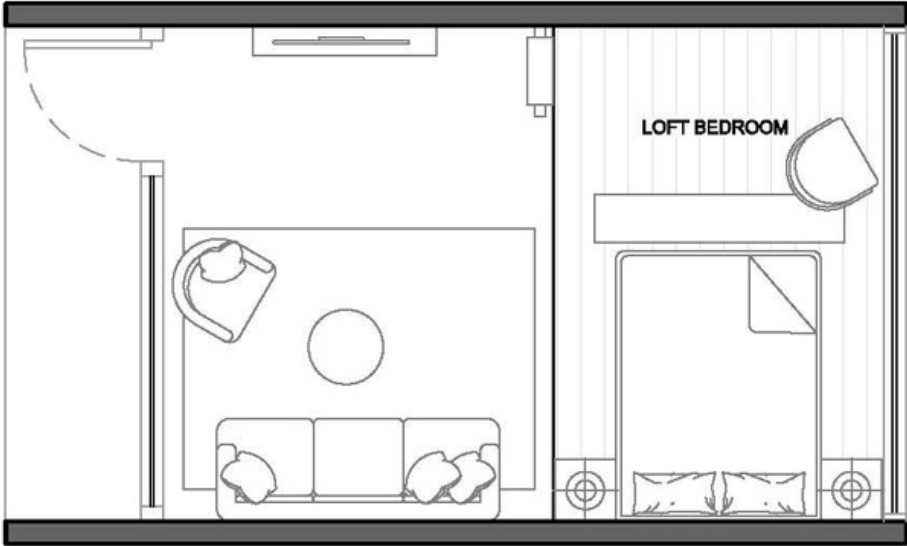


The Loft Hideout

FLOOR PLAN



GROUND FLOOR PLAN



LOFT PLAN



240
SQUARE FT



1
BEDROOM



1
BATHROOM



NATURAL
LIGHT



GREEN
DESIGN

The Loft Hideout

FACTS AND TECHNICAL INFO

OVERALL DIMENSIONS

WIDTH: 11'-10"
LENGTH: 19'-5"
HEIGHT: 14'-4"

FOUNDATION OPTIONS

-CONCRETE PIER
BLOCK
- CRAWLSPACE

WALL ASSEMBLY

2X6 ADVANCED FRAMING
INTERIOR & EXTERIOR
INSULATION
FOR GOAL R-35

ROOF ASSEMBLY

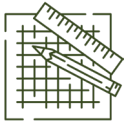
2X6 ADVANCED ROOF
FRAMING & ASPHALT
SHINGLE

AFFORDABLE CONSTRUCTION

DESIGNED FOR
ADVANCED FRAMING,
SAVING ON FRAMING
COSTS BY 40%
OR MORE

What's next?

HOW TO START



IF YOU'RE...

Planning for Possibility

Explore the possibilities of your project with an initial set of drawings for planning, getting permits, or getting a local building cost estimate before committing to the full build set.

This set is not for construction purposes.

Planning Set : \$149

LEARN MORE



AT PLANIVA, WE DESIGN UNIQUE CABINS THAT ARE MAINLY DIY CABINS SUCH AS A-FRAMES TO TINY HOUSE CABINS. WE PRODUCE CONSTRUCTION DRAWINGS FOR OUR CUSTOMERS THAT ARE TECHNICAL AND EASY TO UNDERSTAND AS WELL.



SHEET INDEX

SHEET	INDEX
A1	TITLE SHEET
A2 - A3	BUILD SEQUENCE
A4	FLOOR FRAMING PLANS
A5 - A6	WALL FRAMING PLANS
A7	FLOOR PLANS
A8	FIXTURE PLANS
A9	ROOF FRAMING PLANS
A10	ROOF PLAN
A11 - A12	ELEVATIONS
A13 - A14	SECTIONS
A15	INTERIOR DETAILS(BATHROOM)
A16	INTERIOR DETAILS(BATHROOM)
A17	INTERIOR DETAILS(KITCHEN)
A18	INTERIOR DETAILS(OTHERS)
A19	EXTERIOR DETAILS, DOORS & WINDOWS SCHED.
A20	DOORS & WINDOWS SCHED.
A21	REFLECTED CEILING PLAN
A22	POWER LAYOUT
A23	PLUMBING LAYOUT
A24 - A26	MATERIAL LIST
A27 - A30	PERSPECTIVE

HOUSE SPECIFICATION

NAME:	DIMENSION:	AREA:
LIVING ROOM	8'8" X 11"	96.5 sq.ft.
KITCHEN	7'4" X 6'5"	47.4 sq.ft.
BATHROOM	7' X 4'3"	29.75 sq.ft.
DECK	3' X 11"	33 sq.ft.
LOFT BEDROOM	7'4" X 11"	80.3 sq.ft.

A1

TITLE SHEET

SEND US A NOTE OR QUESTION! HELLO@PLANIVADESIGN.COM