

Operating Instructions

Please read the operating instructions carefully before use

Function Introduction

The product expands the Android system platform through the car USB interface, support the installation of various APP to realize music, video playing and other entertainment functions, and support mobile phone interconnection and access to realize wireless CarPlay and wireless Android Auto functions.

Compatible Cars And Mobile Phones

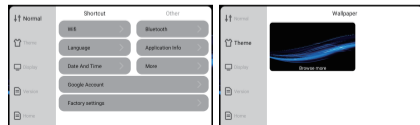
Applicable Models: The original car with wired CarPlay
iPhone: For iOS 10.0 and above
Android phone: Support Android 11.0 and above

Connection Instruction

1. Insert the product into the USB interface of your car.
2. Click "CarPlay" on the screen in original car system interface, then enter to product's Android system.

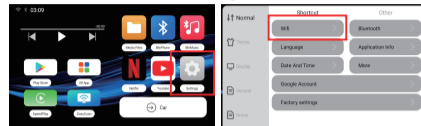


3. Click the "Settings" icon to connect to network, change languages, customize wallpapers etc.

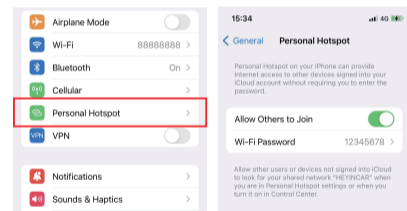


Networking And APP Installation

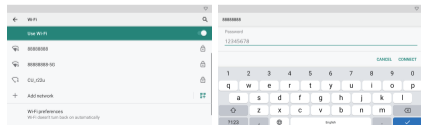
1. Click "Settings" on Android system interface - [WiFi] to enter the interface for connecting to the network.



2. Turn on the hotspot of your mobile phone or other network-sharing devices.



3. Select [WLAN] to enter the network list, then select the network and fill the password to connect it.



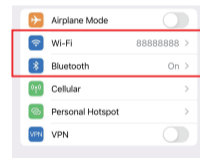
4. Click the "Play Store", there you can download various apps, which makes your driving life joyful.

Wireless CarPlay/Android Auto Connection Instructions

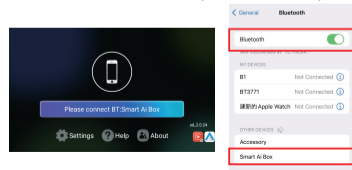
1. Click the "SpeedPlay" icon to enter the connection interface.



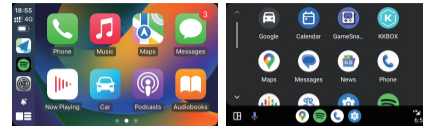
2. Turn on the Bluetooth & WiFi of the iPhone/Android Phone.



3. Search the Bluetooth name displayed on the car screen in the Bluetooth list of the mobile phone, and click pairing.



4. Wait for the connection to succeed, and the wireless CarPlay/Android Auto will work.



TF Card Slot Instruction

TF Card slot: Expandable up to 128GB (TF Card is inserted with the metal face up)



Product Specification

CPU: Qualcomm QCM2290, quad-core 64-bit ARM Cortex-A53 processor @2.0GHz
 GPU: Adreno™ 702
 Chip process: 11nm process
 Operating system: Android system
 Storage: 2GB (RAM) + 16GB (ROM)
 Network: 802.11a/b/g/n/ac,2.4/5Ghz
 Bluetooth: 4.2BLE + 5.0BLE
 Power input: 5V=1A
 Temperature:-20 °C to 75 °C

After-sales Service

Dear client, hello! Thank you for choosing and trusting us among thousands of merchants. It is our luck to meet you in the vast network. I hope you can feel our sincerity and intention when you using our products. Please contact us at any time if you have any questions. We will continue to serve you wholeheartedly and give you a satisfactory answer regardless of pre-sales or after-sales question. The final interpretation right of product after-sales service belongs to the company.

Thank you sincerely, please keep in touch!

Warranty Card

Name	Purchase date	
Phone number	E-Mail	
Address		
Dealer's name		
Warranty content		

Certificate

Product model: _____
 Product specification: _____
 date of manufacture: _____
 examination clerk: _____

PASS