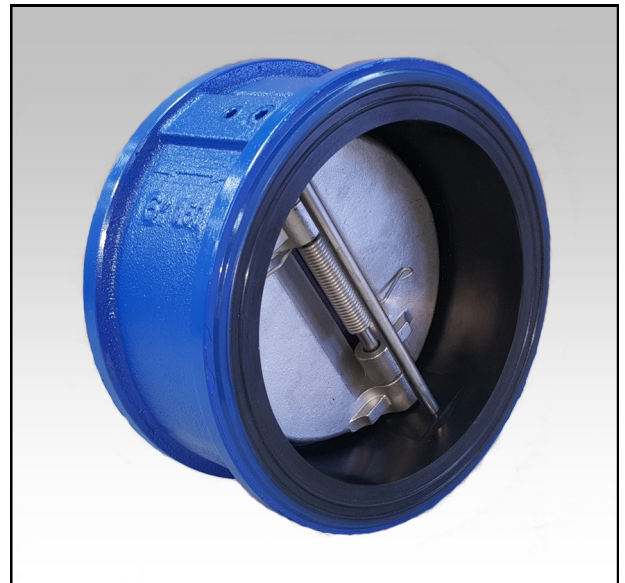


RUBBER LINED WAFER CHECK VALVE MODEL - WCR2



FEATURES AND BENEFITS

- Features excellent retaining performance, high safety and reliability
- Low flow resistance
- Effective in preventing backflow of the medium, reducing water hammer.
- No maintenance required
- Two torsion springs exert pressure on the pair of disc which close the discs quickly and automatically.
- The quick close action prevents the medium from backflow and eliminates water hammer.
- Easy to install
- Can be installed both vertically or horizontally



ITEM	COMPONENT	MATERIAL	GRADE
1	Body	Ductile Iron	AS1831
2	Plates	Stainless Steel	CF8M
3	Hinge Pin	Stainless Steel	AISI F316
4	Stop Pin	Stainless Steel	AISI F316
5	Spring	Stainless Steel	AISI F316
6	Washer	PTFE	-
7	Seat & Liner	Nitrile	AS1646

TECHNICAL SPECIFICATION

Construction: Dual Plate Wafer Check Valve
Size: 50mm - 600mm
(350-600mm non stocked)

Pressure Rating: PN10

Face to Face: ISO5752 Series 16

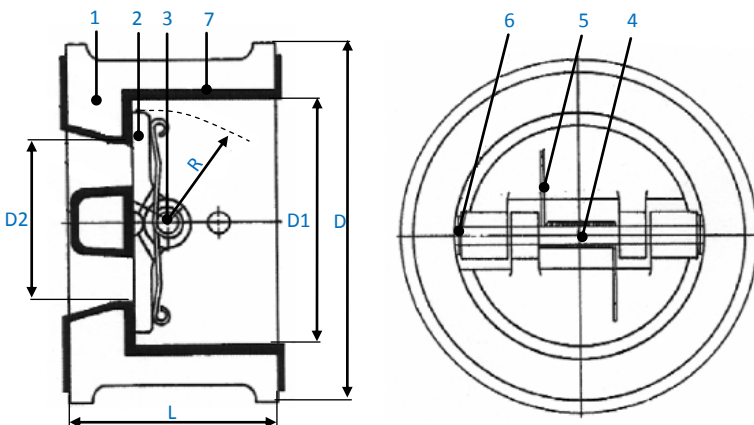
Flanging: Suits AS2129 Table E & D,
AS4087 B5

Coating: 2 Pack Epoxy

Temperature Range: -10°C - 80°C

Pressure Testing: Shell— 15BAR

Seat—11 BAR



DIMENSIONS AND WEIGHTS						
Size	L	D	D1	D2	R	Weight Kg
50	60	96	71	46	32	2
65	67	109	80	51	35	3
80	73	128	92	67	42	4
100	73	158	119	90	55	5
125	83	190	143	110	66	8
150	98	213	169	139	80	11
200	127	270	225	190	107	19
250	146	332	280	240	132	30
300	181	377	329	283	154	46
350	184	420	359	310	173	54
400	191	483	417	364	203	78
450	203	538	460	408	226	96
500	219	593	511	457	249	131
600	222	697	612	558	301	190

APPLICATIONS

Challenger Valves and Actuators are the **“Right Choice for Valves and Actuation”** when quality matters.

Servicing industries such as: Textile, Water Treatment, Irrigation, Energy & Light Industry