

STAINLESS STEEL SWING CHECK VALVE

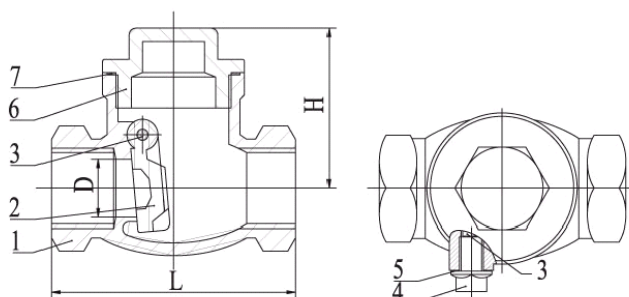
BSP THREADED 15 - 50MM

MODEL - SS2030



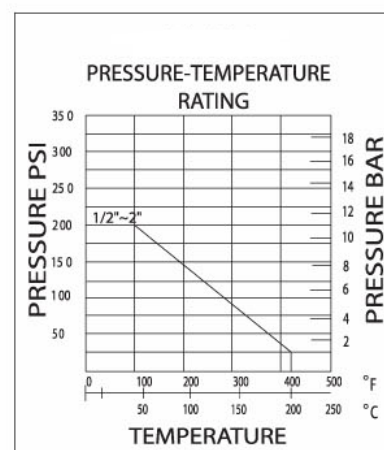
FEATURES AND BENEFITS

- For Industrial, Chemical & General Applications
- 316 S/S Construction
- Threaded BSPT Ends
- Investment Cast Body
- Pressure Rating: 200PSI WOG
- Working Temperature: -20°C~200°C
- Testing to API 598



NO.	PART NAME	MATERIAL
1	Body	ASTM A351-CF8M
2	Disc	ASTM A351-CF8M
3	Plug	SS304
4	Nut	S304
5	Gasket	PTFE
6	Cap	ASTM A351-CF8M
7	Seal	PTFE

DIMENSIONS				
DN	D	L	H	(Kg)
15 (½")	15	65	47	0.31
20 (¾")	20	80	57	0.47
25 (1")	25	90	62	0.72
32 (1¼")	32	103	65	1.03
40 (1½")	40	119	80	1.47
50 (2")	50	140	87	2.16



APPLICATIONS

Challenger Valves and Actuators are the **“Right Choice for Valves and Actuation”** when quality matters.

Servicing industries such as:

Water & Waste Water, Mining, Desalination, Pumping, Industrial Processing, Irrigation, Materials Handling and Chemical Services.