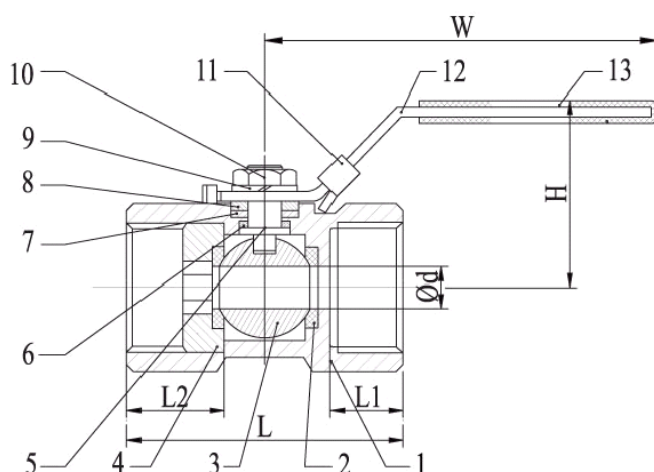


STAINLESS STEEL 1 PIECE BALL VALVE LEVER HANDLE 8 - 50MM MODEL - SS2017K



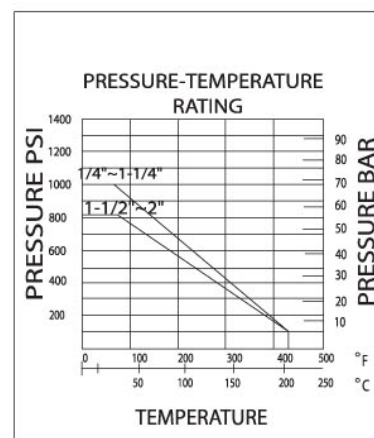
FEATURES AND BENEFITS

- For Industrial, Chemical & General Applications
- 1Piece 316 S/S Construction
- Threaded BSPT Ends
- Reduced Bore
- Lockable Lever Handle
- Blowout Proof Stem
- Investment Cast Body
- Pressure Rating:1000PSI WOG
- Working Temperature: -20°C~200°C
- Replacement Seal Kits available
- Available with full 316 S/S components
- Testing to API 598
- Designed according to EN12516



NO.	PART NAME	MATERIAL
1	Body	ASTM A351-CF8M
2	Ball Seat	PTFE
3	Ball	ASTM A351-CF8M
4	Cap	ASTM A351-CF8M
5	Stem	AISI 316
6	Thrust Washer	PTFE
7	Stem Packing	PTFE
8	Washer	AISI 304
9	Spring Washer	AISI 304
10	Nut	AISI 304
11	Lock Device	AISI 304
12	Handle	AISI 304
13	Handle Cover	Plastic

DIMENSIONS								
DN	d	L	H	W	L1	L2	N.M	Kg
8 (3/8")	5	40	32	68	11.5	15.2	4	0.06
10 (3/8")	7	45	33	68	13.2	15.6	4	0.09
15 (1/2")	9.5	56	42	95	17.5	22.0	6	0.15
20 (3/4")	12.5	59	45	95	16.6	22.1	6	0.22
25 (1")	15	71	48	95	20.1	26.0	8	0.36
32 (1 1/4")	20	76	58.3	106	19.8	27.6	10	0.55
40 (1 1/2")	25	85	67	128	21.0	29.7	14	0.86
50 (2")	32	99	74.5	130	23.5	31.7	15	1.29



APPLICATIONS

Challenger Valves and Actuators are the **"Right Choice for Valves and Actuation"** when quality matters.

Servicing industries such as :

Water & Waste Water, Mining, Desalination, Pumping, Industrial Processing, Irrigation, Materials Handling and Chemical Services.