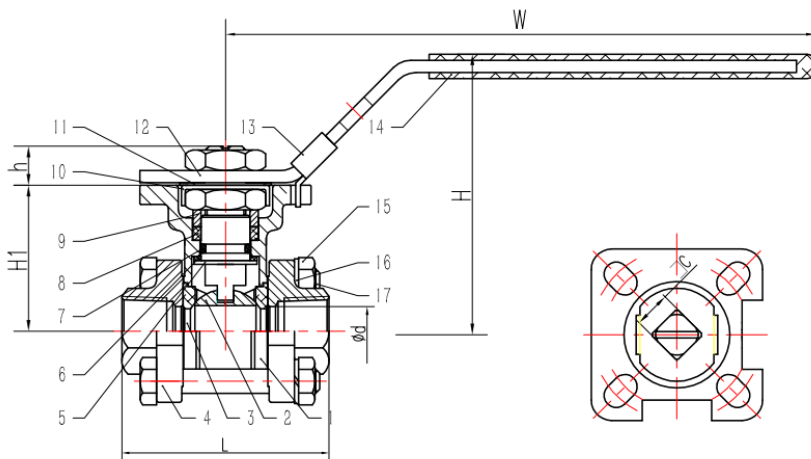


# STAINLESS STEEL 3 PIECE BALL VALVE DIRECT ISO MOUNTING PAD 8 - 100MM MODEL - SS2013ND



## FEATURES AND BENEFITS

- For Industrial, Chemical & General Applications
- 3 Piece 316 S/S Swing Out Design (allow for inline maintenance)
- Threaded BSPT Ends
- Full Bore
- Direct ISO 5211 Mounting Pad
- Blowout Proof Stem & Anti Static Device
- Investment Cast Body Construction
- Pressure Rating:1000PSI
- Working Temperature: -20°C~200°C
- Replacement Seal Kits available
- Testing to API598
- Designed according to EN12516



NO.	PART NAME	MATERIAL
1	Body	CF8M
2	Ball	SS316
3	Ball Seal	PTFE & 10% Carbon Fibre
4	Cap	CF8M
5	Stem	SS304
6	Thrust Washer	PTFE
7	O-Ring	Nbr
8	Stem Packing	PTFE
9	Gland	SS304
10	TAB Washer	SS304
11	Stopper	SS304
12	Handle Shank	SS304
13	Handle Lock	SS304
14	Handle Cover	Plastic
15	Nut	SS304
16	Thrust Washer	SS304
17	Bolt	SS304

DIMENSIONS								
DN	Ød	W	H	H1	h	L	ISO5211	C
8 ( ¼")	11.5	140	60	30	9	51	F03	9
10 ( ⅜")	12.5	140	60	30	9	51	F03	9
15 ( ½")	15	140	68	36.5	9	63	F03/F04	9
20 ( ¾")	20	140	72	40.5	9	71	F03/F04	9
25 (1")	25	160	86	48.5	11	80	F04/F05	11
32 (1¼")	32	160	94	53	11	94	F04/F05	11
40 (1½")	40	185	101	61.5	14	103	F05/F07	14
50 (2")	50	185	110	70.5	14	126	F07	14
65 (2½")	65	230	143	95.5	17	158	F07/F10	17
80 (3")	76	230	157	109	17	179	F07/F10	17
100 (4")	94	320	182	131	22	213	F07/F10	17

## APPLICATIONS

Challenger Valves and Actuators are the **"Right Choice for Valves and Actuation"** when quality matters.

Servicing industries such as :

Water & Waste Water, Mining, Desalination, Pumping, Industrial Processing, Irrigation, Materials Handling and Chemical Services.

# STAINLESS STEEL 3 PIECE BALL VALVE DIRECT ISO MOUNTING PAD 8 - 100MM MODEL - SS2013ND



## FEATURES AND BENEFITS

The 3 piece construction makes it versatile in application, easy to install and simple to maintain. The 3 piece ball valves have a swing out design, body (centre section can be swung out while installed inline. Seats, Seal & Ball can be replaced quickly and easily without disturbing pipe alignment.

- 1) Remove one of the upper body bolts and loosen the other.
- 2) Make sure the ball is in the open position, then swing out the centre section.
- 3) Clean, Repair & Replace parts as required.
- 4) Return the body to the centre of the pipeline and tighten the bolts.

## SS2013ND BALL VALVE SIZING CHART

Size	Double Acting Pneumatic Actuator	Spring Return Pneumatic Actuator	Electric Actuator
8mm	HP-DA035	HP-SR050	HQ005
10mm	HP-DA035	HP-SR050	HQ005
15mm	HP-DA035	HP-SR050	HQ005
20mm	HP-DA035	HP-SR050	HQ005
25mm	HP-DA050	HP-SR063	HQ005
32mm	HP-DA050	HP-SR075	HQ005
40mm	HP-DA063	HP-SR075	HQ005
50mm	HP-DA063	HP-SR088	HQ005
65mm	HP-DA075	HP-SR088	HQ015
80mm	HP-DA088	HP-SR100	HQ015
100mm	HP-DA125	HP-SR125	HQ015

Note: If 415V AC is required, consult Challenger.

## PRESSURE-TEMPERATURE RATING

