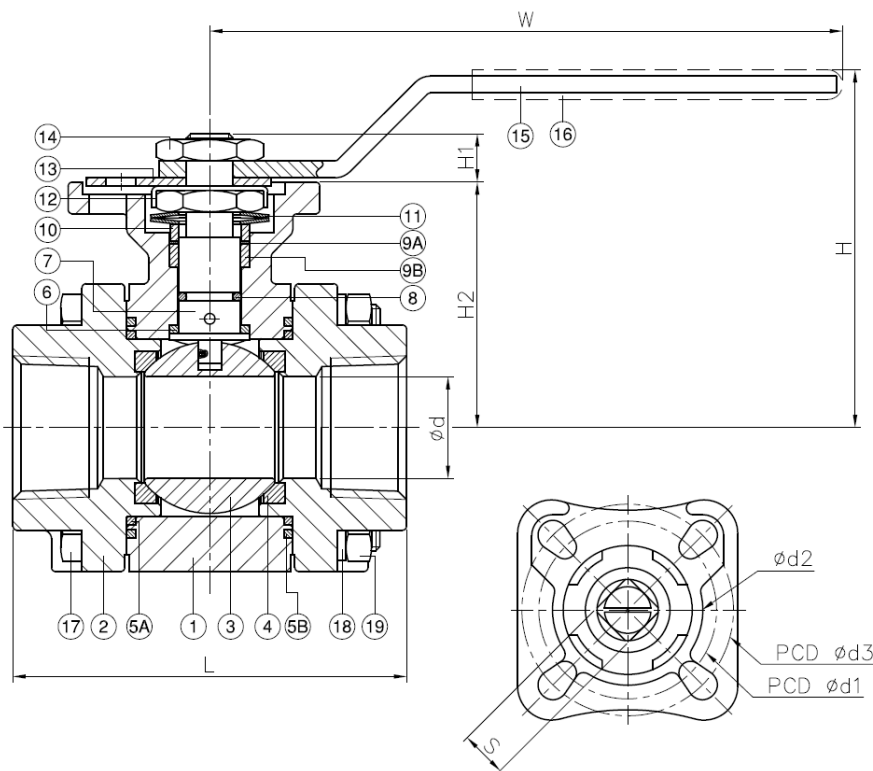
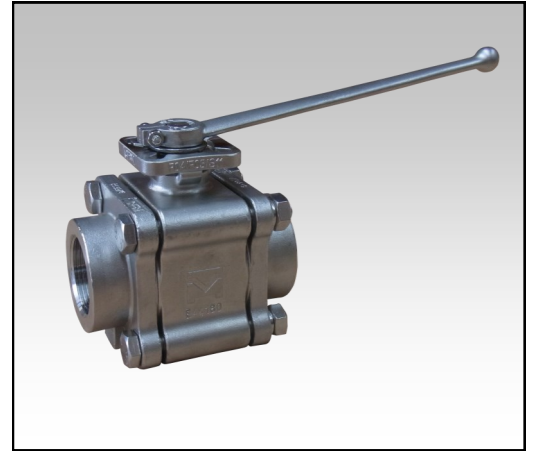


STAINLESS STEEL FIRE SAFE BALL VALVE LEVER HANDLE 15 - 50MM MODEL - SS2013KMD



FEATURES AND BENEFITS

- For Industrial, Chemical & General Applications
- Threaded BSPT Ends
- Blowout Proof Stem
- Investment Cast Body Construction
- Fire Safe Design to API607
- Pressure Rating: DN15—DN25 2000WOG
DN32—DN50 1500WOG
- Working Temperature: -20°C~200°C



NO.	PART NAME	MATERIAL
1	Body	ASTM A351-CF8M
2	Cap	ASTM A351-CF8M
3	Ball	ASTM A351-CF8M
4	Ball Seat	RTFE
5A	Body Seal A	CTFE
5B	Body Seal B	Graphite
6	Thrust Washer	CTFE
7	Stem	ASTM A276-316
8	O-Ring	Viton
9A	Packing A	CTFE
9B	Packing B	Graphite
10	Gland Ring	AISI 304
11	Belleville Washer	AISI 301
12	Lock Washer	AISI 304
13	Stopper	AISI 304
14	Nut	AISI 304
15	Handle	AISI 304
16	Handle Sleeve	PVC
17	Bolt	AISI 304
18	Spring washer	AISI 304
19	Bolt Nut	AISI 304

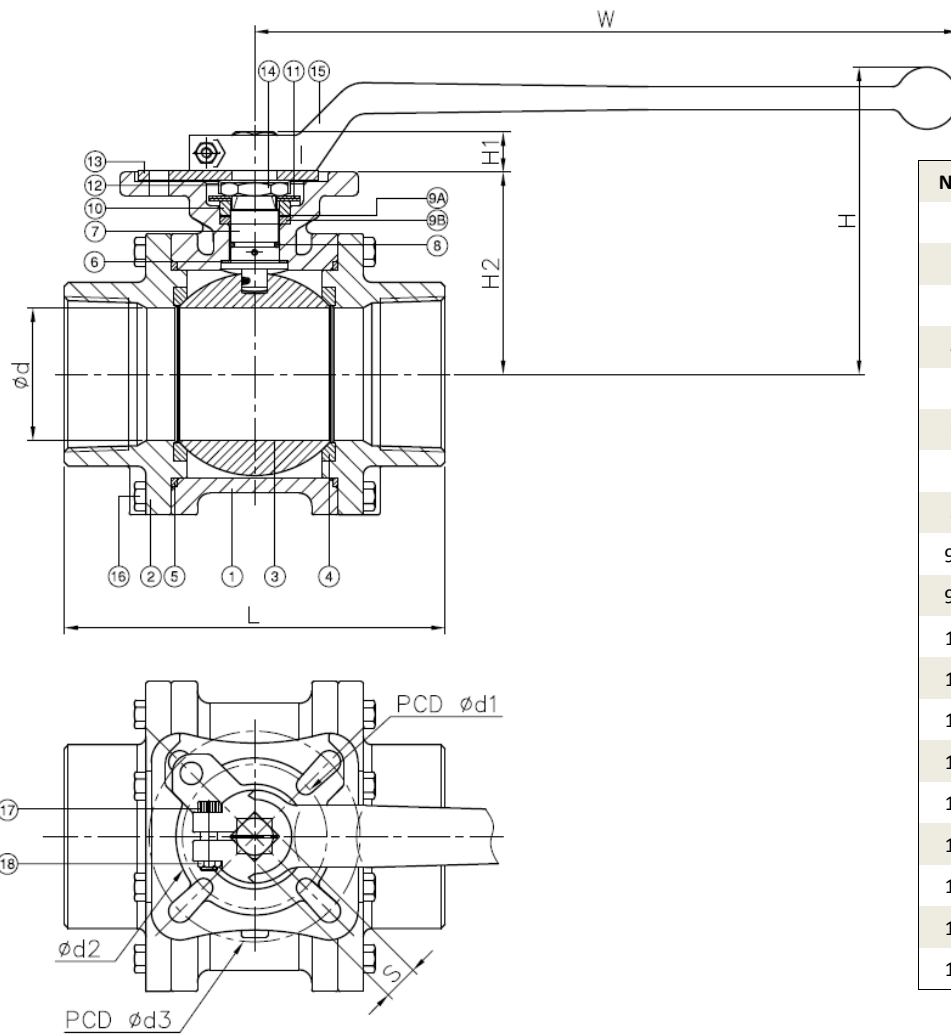
DN	d	L	H	H1	H2	W	S	d1	d2	d3	Breakaway (Nm)	Action (Nm)	(Kg)	(Cv)
15	15	75	64	8.5	43	114.5	9	36	31	42	3.6	2.1	0.9	37
20	20	80	67	9	46	114.5	9	36	31	42	5.1	3	1.2	68
25	24	93	80.9	11	58	140	11	42	35.5	50	7.7	4.7	2.3	101
32	30	110	85.7	11	62.8	140	11	42	35.5	50	13.1	5.6	3.7	162
40	38	120	105.5	14	74.5	172	14	50	56	70	15.7	6.6	5.1	268
50	50	140	112.5	14	82	172	14	50	56	70	24.4	10.1	7.6	486

STAINLESS STEEL FIRE SAFE BALL VALVE LEVER HANDLE 65 - 100MM MODEL - SS2013KMD



FEATURES AND BENEFITS

- For Industrial, Chemical & General Applications
- Threaded BSPT Ends
- Blowout Proof Stem
- Investment Cast Body Construction
- Fire Safe Design to API607
- Pressure Rating: DN65—DN100 1000WOG
- Working Temperature: -20°C~200°C



NO.	PART NAME	MATERIAL
1	Body	ASTM A351-CF8M
2	Cap	ASTM A351-CF8M
3	Ball	ASTM A351-CF8M
4	Ball Seat	RTFE
5	Body Seal	Graphite
6	Thrust Washer	CTFE
7	Stem	ASTM A276-316
8	O-Ring	Viton
9A	Packing A	CTFE
9B	Packing B	Graphite
10	Gland Ring	AISI 304
11	Belleville Washer	AISI 301
12	Lock Washer	AISI 304
13	Stopper	AISI 304
14	Nut	AISI 304
15	Handle	AISI 304
16	Bolt	AISI 304
17	Bolt Washer	AISI 304
18	Nut	AISI 304

DN	d	L	H	H1	H2	W	S	d1	d2	c3	Breakaway (Nm)	Action (Nm)	(Kg)	(Cv)
65	65	184.2	146.8	17	96.5	340	17	70	76	102	44.5	21.7	10.9	843
80	75	204	158.9	17	108.6	340	17	70	76	102	87.3	40	16.3	1120
100	96	240	-	-	-	340	22	102	100	125	90.2	45.3	25.7	1892