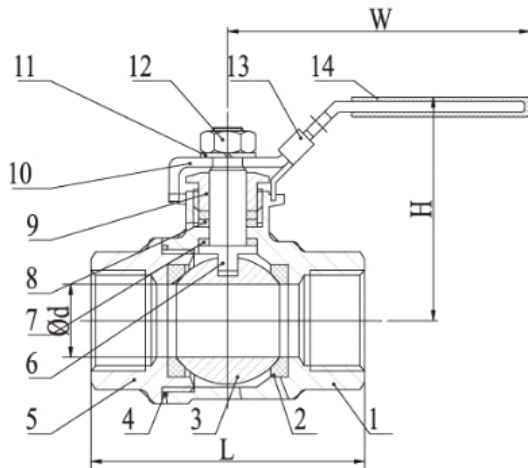


STAINLESS STEEL 2 PIECE BALL VALVE LEVER HANDLE 8 - 50MM MODEL - SS2006S



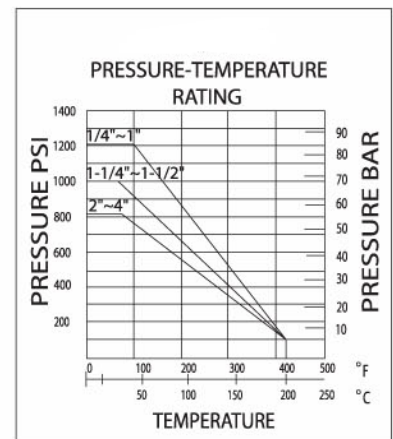
FEATURES AND BENEFITS

- For Industrial, Chemical & General Applications
- 2 Piece 316 S/S Construction
- Threaded BSPT Ends
- Full Bore
- Lockable Lever Handle
- Blowout Proof Stem
- Investment Cast Body
- Pressure Rating:: 1000PSI WOG
- Working Temperature: -20°C~200°C
- Replacement Seal Kits available
- Available with full 316 S/S components
- Testing to API598
- Designed according to EN12516



NO.	PART NAME	MATERIAL
1	Body	ASTM A351-CF8M
2	Ball Seat	PTFE
3	Ball	ASTM A351-CF8M
4	Body Gasket	PTFE
5	Cap	ASTM A351-CF8M
6	Stem	AISI 316
7	Thrust Washer	PTFE
8	Stem Packing	PTFE
9	Gland Nut	AISI 304
10	Handle	AISI 304
11	Washer	AISI 304
12	Nut	AISI 304
13	Lock Device	AISI 304
14	Handle Cover	Plastic

DIMENSIONS						
DN	d	L	H	W	N.M	Kg
8 (3/8")	12.5	50	49	106	4	0.19
10 (3/8")	12.5	50	49	106	4	0.19
15 (1/2")	15	56	51	104	5	0.26
20 (3/4")	20	66	58	116	8	0.41
25 (1")	25	79	73	148	10	0.66
32 (1 1/4")	32	91	79	148	14	1.00
40 (1 1/2")	38	99	85	182	25	1.30
50 (2")	50	121	95	182	40	2.10



APPLICATIONS

Challenger Valves and Actuators are the **“Right Choice for Valves and Actuation”** when quality matters.

Servicing industries such as :

Water & Waste Water, Mining, Desalination, Pumping, Industrial Processing, Irrigation, Materials Handling and Chemical Services.