

# RESILIENT SEAT SWING CHECK LEVER WEIGHT DN80 - DN375 MODEL RSSC



## FEATURES AND BENEFITS

- Idea for use on potable water and sewerage applications.
- Designed to prevent backflow in a pipeline
- Positive pressure holds the disc open avoiding fluctuations.
- Designed and tested in accordance with AS4794.
- AS4794 StandardsMark Certified product by SAI Global Licence No:SMK40161
- WaterMark Approved product by SAI Global Licence No: WMK26065
- Body and bonnet are made of high grade ductile iron to AS1831.
- Fusion Bonded Epoxy coating to AS4158 internally and externally providing longer life and excellent corrosion resistance.
- Full bore non clogging design restricts debris accumulation and reduces head loss.
- Ductile iron disc encapsulated with EPDM rubber approved to AS4020 suitable for contact with potable water.
- The EPDM encapsulated disc prevents corrosion, ensures drip tight closure and a long life.
- Extended shaft design allows installation of limit switches.
- Bonnet allows for easy access for cleaning and maintenance without having to remove from pipeline.
- Lifting lugs and Support feet for easy handling.

## Options

- Alternative flange connections available on request
- Free Acting
- Open / Closed mechanical switches
- No Flow Proximity Sensors

## APPLICATIONS

Challenger Valves and Actuators are the **“Right Choice for Valves and Actuation”** when quality matters.

Servicing industries such as: Water & Waste Water, Desalination, Pumping, Industrial Processing, Irrigation and General Industries.



## TECHNICAL SPECIFICATION

**Construction:** Resilient Seat Swing Check Valve

**Size:** 80mm - 375mm

**Pressure Rating:** PN16

**Face to Face:** According to AS4794

**Flange Drilling:** AS4087 B5 (Table D)

**Coating:** AS4158

**Temperature Range:** 0°~ 60°

**Pressure Testing:** Shell—24 BAR  
Seat—16 BAR



AS4794 Lic WMK26065  
SAI Global



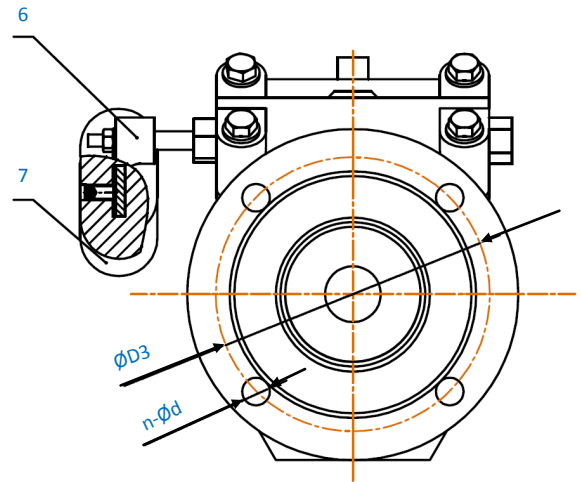
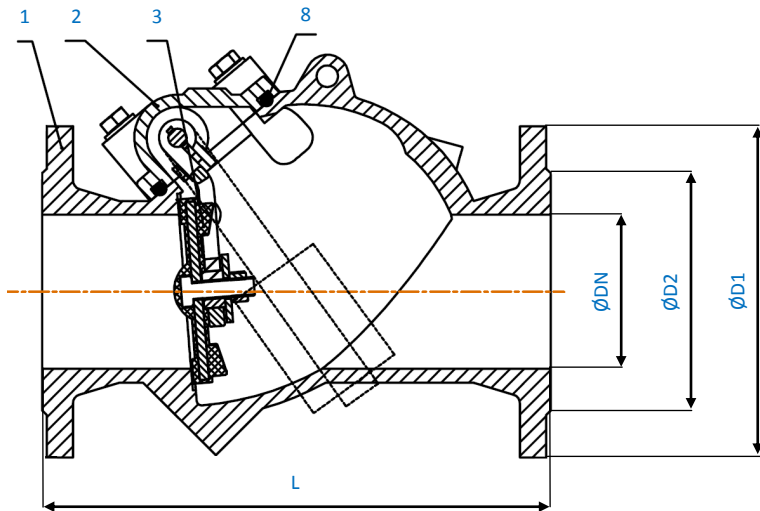
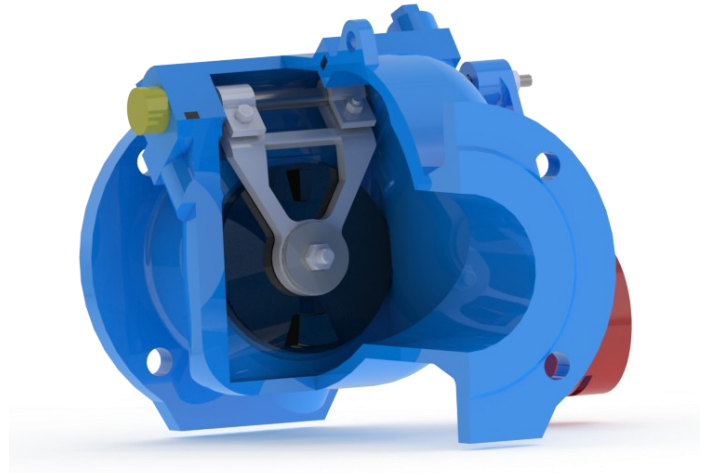
Australian  
Standard  
AS4794 Lic SMK40161  
SAI Global

# RESILIENT SEAT SWING CHECK LEVER WEIGHT DN80 - DN375 MODEL RSSC

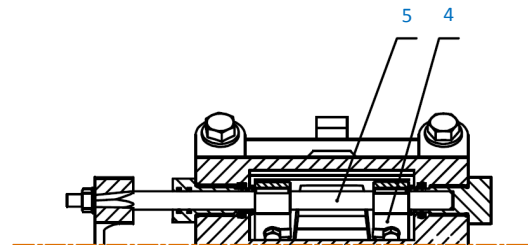


## TECHNICAL : VALVE MATERIALS

ITEM	COMPONENT	MATERIAL	GRADE
1	Body	Ductile Iron	AS1831 450-10
2	Bonnet	Ductile Iron	AS1831 450-10
3	Disc	Ductile Iron EPDM Encapsulated	AS1831 450-10 AS1646.2
4	Hinge	Stainless Steel	ASTM A351-CF8M
5	Shaft	Stainless Steel	ASTM A276-316
6	Lever	Ductile Iron	AS1831 450-10
7	Weight	Grey Cast Iron	AS1830 T220
8	Gasket	EPDM	AS1646.2



DIMENSIONS						Weight (Kg)
DN	D1	D2	D3	n- $\varnothing d$	L	
80	185	122	146	4-18	260	20
100	215	154	178	4-18	330	28
150	280	211	235	8-18	410	56
200	335	268	292	8-18	540	92
250	405	328	356	8-22	640	164
300	455	378	406	12-22	700	242
375	550	463	495	12-26	820	410



# RESILIENT SEAT SWING CHECK LEVER WEIGHT DN80 - DN375 MODEL RSSC



## OPTION: NO FLOW PROXIMITY SWITCH & CAM

### FEATURES AND BENEFITS

- 5 to 12mm sensing ranges
- 18mm threaded barrels
- LED target indication
- Normally open and normally closed models
- Cable and Micro (M12) quick disconnect models

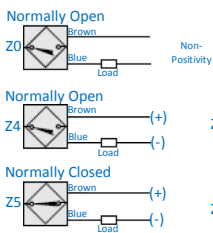
### FUNCTION

The NBN8-18GM40-ZO proximity sensors achieves position sensing via SS bolt passing within 8mm of the sensor. The SS bolt is attached to the lever arm cam for positive range indication.



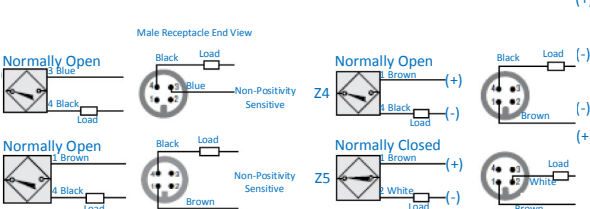
### WIRING DIAGRAMS - 2-Wire DC

#### CABLE CONNECTION:

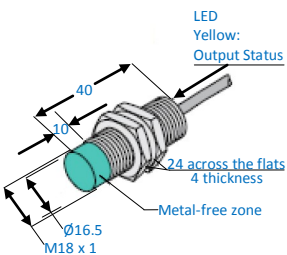


#### QUICK DISCONNECT - V1 TYPE:

Note: Wiring diagrams show quick disconnect pin numbers.



### DRAWING NO.2 - 8mm Sensing Range



### TECHNICAL SPECIFICATION

- Supply Voltage:** (NB B/BN Models) - 5-60 VDC  
(NCB/NCN Models) - 3.5-30 VDC
- Load Current (I<sub>L</sub>):** 100mA max.
- Leakage Current (Off-State):** (NB B/BN Models) - ≤ 0.5mA  
(NCB/NCN Models) - ≥ 0.8mA
- Output:**  
(Suffix Z0, Z3, Z4) - Normally open (sinking or sourcing)  
(Suffix Z1, Z5) - Normally closed (sinking or sourcing)
- Voltage Drop:** (NB B/BN Models) - ≤5 VDC  
**At I<sub>L</sub> (Max)** (NCB/NCN Models) - ≤3.5 VDC
- Hysteresis:** 1-10% (5% typical)
- Short Circuit & Overload Protection:** Yes
- Reverse Polarity Protected:** Yes
- LED Indication:** See dimension drawings
- Sensing Face Material:** PBT
- Standards:** EN 60947-5-2
- Environmental Protection:** IP67
- Ambient Temperature:** -25°C to +70°C
- Approvals:** CE, UL Listed, FM Approved

### APPLICATIONS

Challenger Valves and Actuators are the **“Right Choice for Valves and Actuation”** when quality matters.

Servicing industries such as: Pulp and Paper, Mining, Water Treatment, and Sewerage.