

# NOZZLE CHECK VALVE

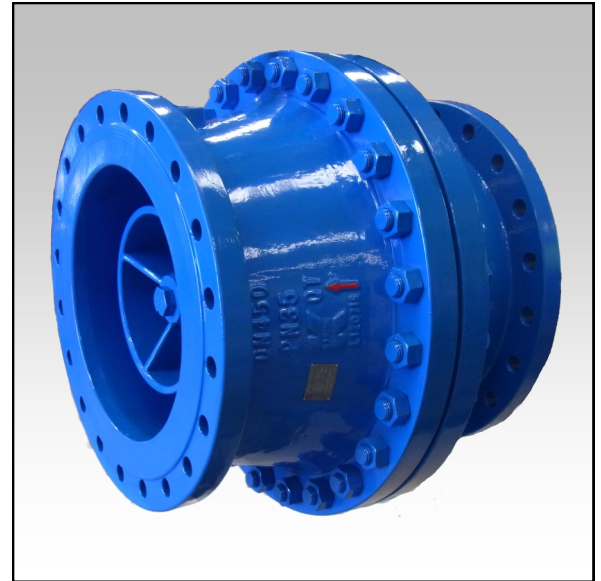
DN50—DN900

MODEL - K-RVZ/G



## FEATURES AND BENEFITS

- Inherent non-slam characteristics
- Rapid closure, less than 0.15sec movement from fully open to fully closed
- Short stroke
- Low pressure loss
- Resilient sealing for high shut off with 100% reliability (DN200-DN250)
- Installed in horizontal or vertical position
- Coating AKZO Nobel Resicoat R4 complies with AS4158



## TECHNICAL SPECIFICATION

<b>Valve Nominal Diameter:</b>	50MM-900mm
<b>Valve Pressure Rating:</b>	PN16
<b>End Connection:</b>	Flanged AS4087
<b>Media:</b>	Clean water, Air.
<b>Working Temperature:</b>	0°C - 95C
<b>Testing:</b>	API 598 BS 6755

## APPLICATIONS

Challenger Valves and Actuators are the “*Right Choice for Valves and Actuation*” when quality matters. Servicing industries such as: Water treatment and Pump Station.



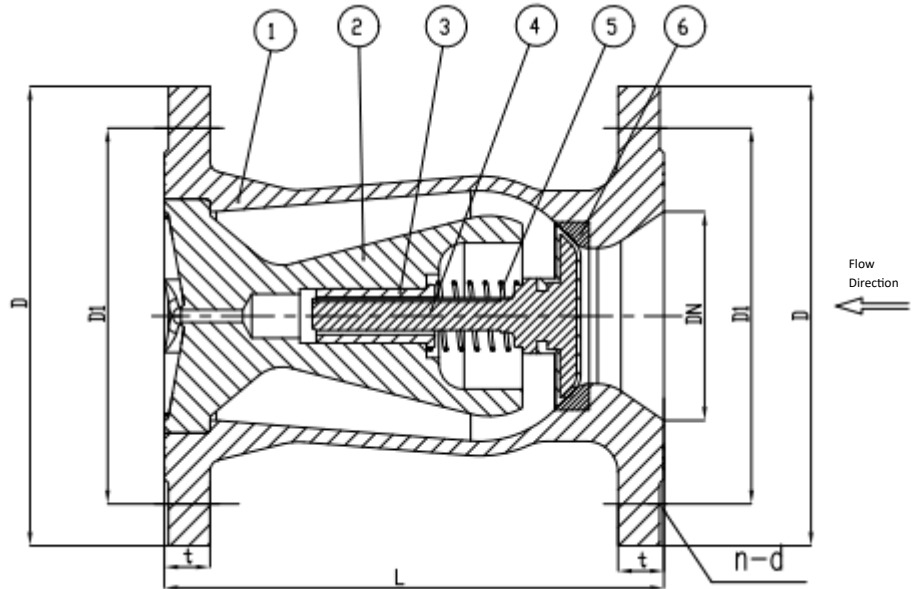
# NOZZLE CHECK VALVE

DN50—DN900

MODEL - K-RVZ/G

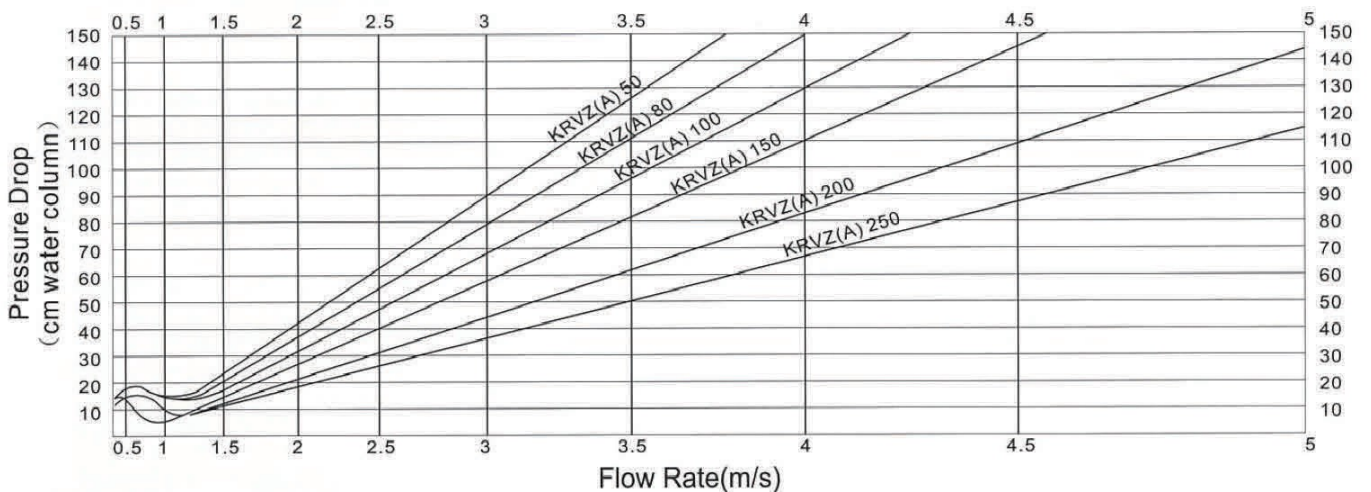


## K-RVZ DN50MM - DN250MM



No	Components	Material	Grade
1	Body	Ductile Iron	AS1831 450-10
2	Flow Diffuser	Ductile Iron	AS1831 450-10
3	Bush	Al-Bronze	GB/T-12225 ZCuAl0Fe3
4	Disc	Stainless Steel & EPDM	GB/T 2100 ZG1Cr13 with EPDM
5	Spring	Stainless Steel	ASTM A182 SS304
6	Seat	Stainless Steel	ASTM A351 CF8M

Size DN	Dimensions					Weight (kg)
	L	D	D1	n-d	t	
50	120	150	114	4-18	17	7
80	180	185	146	4-18	19	13
100	240	215	178	4-18	19	15
150	350	280	235	8-18	21	39
200	450	335	292	8-18	22	73
250	500	405	356	8-22	25	108



# NOZZLE CHECK VALVE

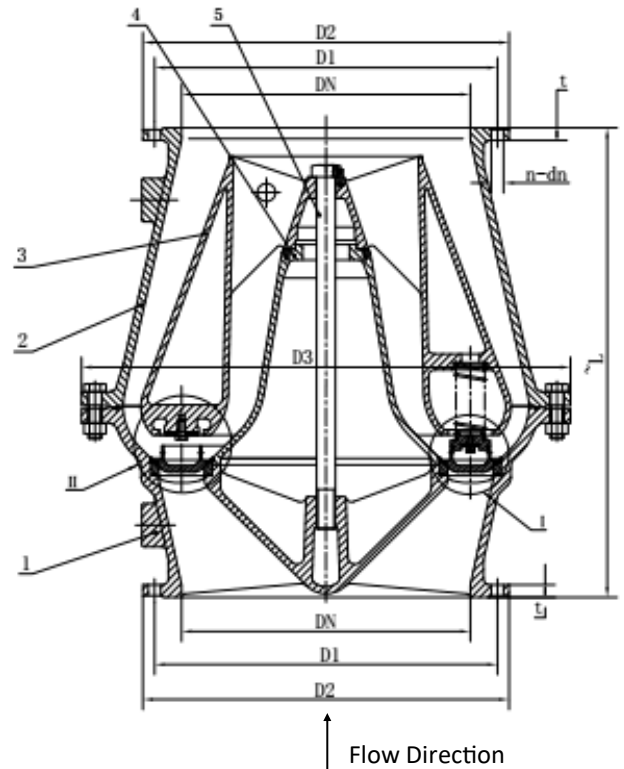
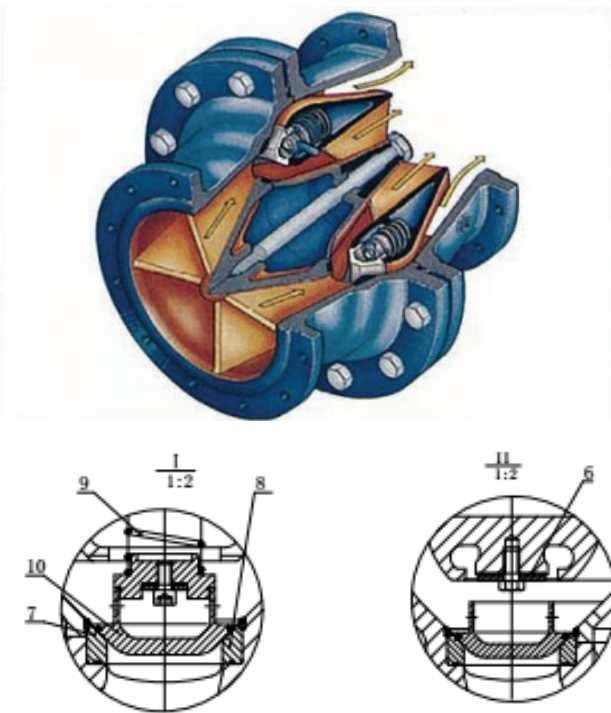
## DN50—DN900

### MODEL - K-RVZ/G



**CHALLENGER**  
VALVES AND ACTUATORS

### K-RVG DN300MM - DN900MM



No	Components	Material	Grade	Dimensions										
				Size DN	L	D1	D2	D3	dn	n	t	Weight (kg)		
1	Upper Body	Ductile Iron	AS1831 450-10											
2	Lower Body	Ductile Iron	AS1831 450-10											
3	Flow Diffuser Outer	Ductile Iron	AS1831 450-10	300	500	406	445	620	22	12	25	265		
4	Flow Diffuser Inner	Ductile Iron	AS1831 450-10	350	600	470	525	690	26	12	29	408		
5	Bolt	Alloy Steel	35CrMoA/B7	400	675	521	580	765	26	12	29	514		
6	Reed	Stainless Steel	ASTM A276 304	450	675	584	640	805	26	12	32	524		
7	Seat Inner	Al Bronze	AS1565 C95200	500	850	641	705	930	26	16	32	916		
8	Seat Outer	Al Bronze	AS1565 C95200	600	1000	756	825	1055	30	16	35	1180		
9	Spring	Stainless Steel	ASTM A182 304	700	1150	845	910	1240	30	20	38	1648		
10	Disc	Al Bronze	AS1565 C95200	800	1300	984	1060	1380	36	20	41	2045		
				900	1450	1092	1175	1530	36	24	44	3200		

