

ELECTRIC QUARTER TURN ACTUATOR MODEL: HQ200 - 900



FEATURES AND BENEFITS

- High torque and various control options to meet specific requirements
- Supplied with a heavy duty and robust spur gear drive allowing operation on larger size and higher torque valves.
- High Corrosion resistance due to hard anodizing and polyester powder coating.
- Space heater standard, preventing moisture and condensation build up.
- 4 Limit Switches (2 operation open/close, 2 additional for client use).
- Open/Close over torque switches are standard providing added protection against damage.
- Manual over ride featuring de-clutchable lever and handwheel.
- Fan cooled motor is reversible and features high output power, high efficiency and contains built in thermal overload protection (150°C Open, 97° Close) preventing over heating and damage to the motor coil.
- Open/Close stopper bolts protect gearing against over travel during manual operation.
- Removable drive bushing can be machined to suit any valve.

OPTIONS

- Water Tight IP68, 10M 72HRS (WTA)
- Explosion Proof, Ex d IIB T4 (EXA)(ATEX)(HQ200 & 300only)
- Potentiometer Unit, 1000 Ω (PIU)
- Proportional Control Unit (PCU)
 - Input / Output 4-20mA
 - Input / Output 0-10V DC (240 ONLY)
- Additional Torque Switches (ATS)
- Current Position Transmitter (CPT)

APPLICATIONS

Challenger Valves and Actuators are the “**Right Choice for Valves and Actuation**” when quality matters.

HQ200-900 electric actuator is specially designed for quarter turn valve operation such as Ball, Butterfly, Plug valves/Dampers and similar usages.

Servicing industries such as : Water & Waste Water, Mining, Desalination, Pumping, Industrial Processing, Irrigation, Materials Handling and Chemical Services.



TECHNICAL SPECIFICATION

Construction : Quarter turn electric actuator

Voltage Option: 240V AC
110V AC
415V AC

Output Torque Range: 2000Nm - 9000Nm

Operating Time: 31-117 seconds

Mounting: ISO5211

Enclosure: IP67

Rated Current: 240V AC - 1.8A-9A
110V AC - 3.8A-14.8A
415V AC - 1.1A-2.1A

Duty Cycle: 40% (S4)

Temperature Range: -20°C to 70°C

Cable Entry: PF 3/4" Tap

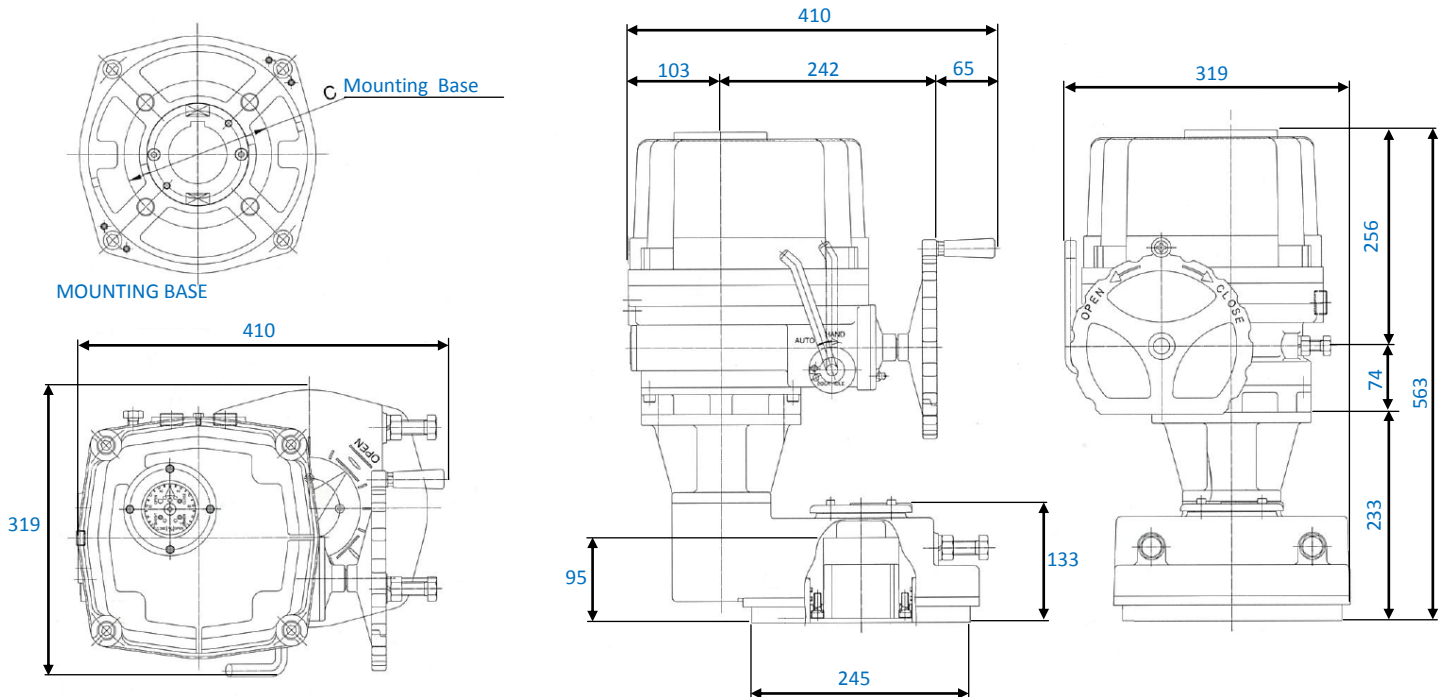
ELECTRIC QUARTER TURN ACTUATOR MODEL: HQ200 - 900



TECHNICAL DATA:

HQ (Model)	MAX OUTPUT TORQUE Nm	OPERATING TIME	MOUNTING BORE SIZE	MOUNTING BASE ISO 5211	RATED CURRENT			NUMBER OF HANDLE TURNS	WEIGHT kg
					110V AC	240V AC	415V AC		
HQ-200	2000	31-37	Ø65	F14 (140mm)	3.8A	1.8A	1.1A	49.5	75
HQ-300	3000	93-112	Ø65	F16 (165mm)	4.5A	2.3A	1.1A	49.5	75
HQ-600	6000	66-78	Ø110	F25 (254mm) & F30 (298mm)	14.8A	9.0A	2.1A	84	215
HQ-800	8000	98-116	Ø110	F25 (254mm) & F30 (298mm)	14.8A	9.0A	2.1A	84	215
HQ-900	9000	99-117	Ø110	F25 (254mm) & F30 (298mm)	14.8A	9.0A	2.1A	84	215

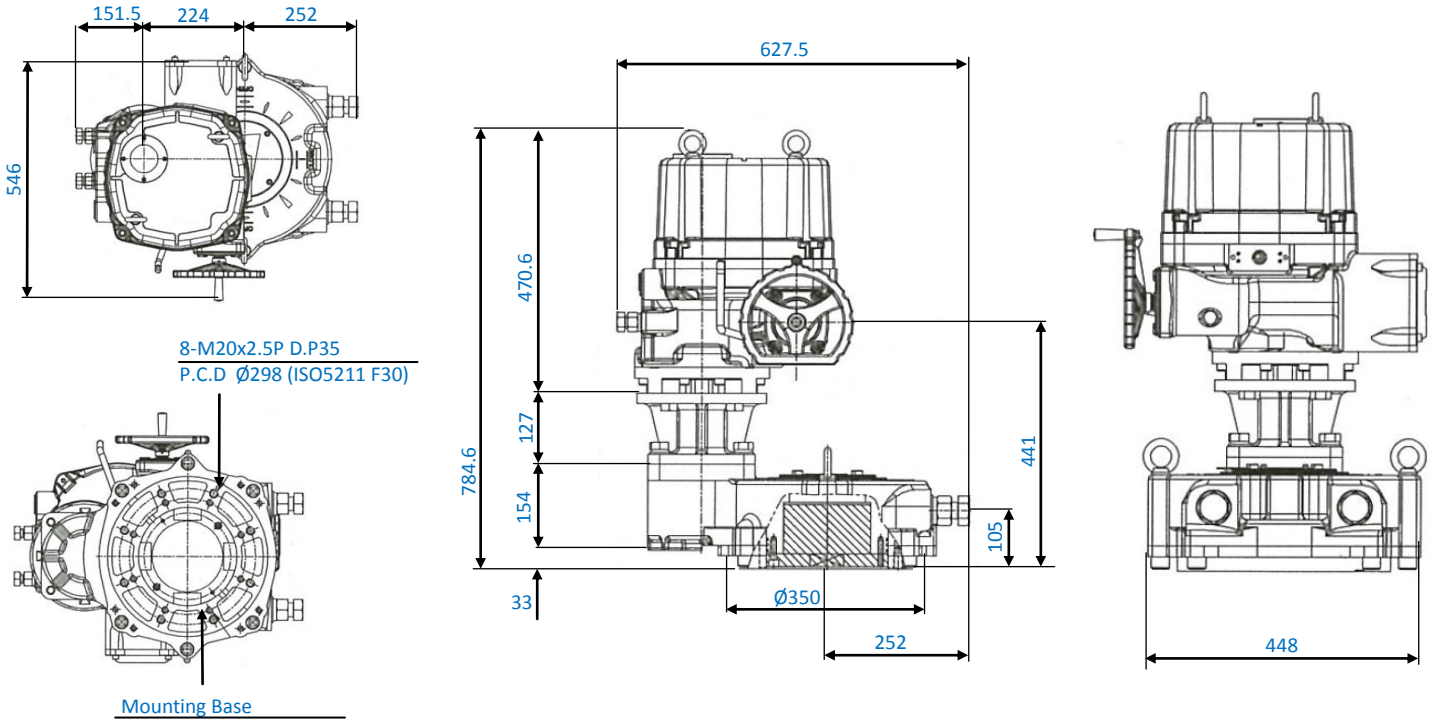
DIMENSIONS: HQ200-300



ELECTRIC QUARTER TURN ACTUATOR MODEL: HQ200 - 900

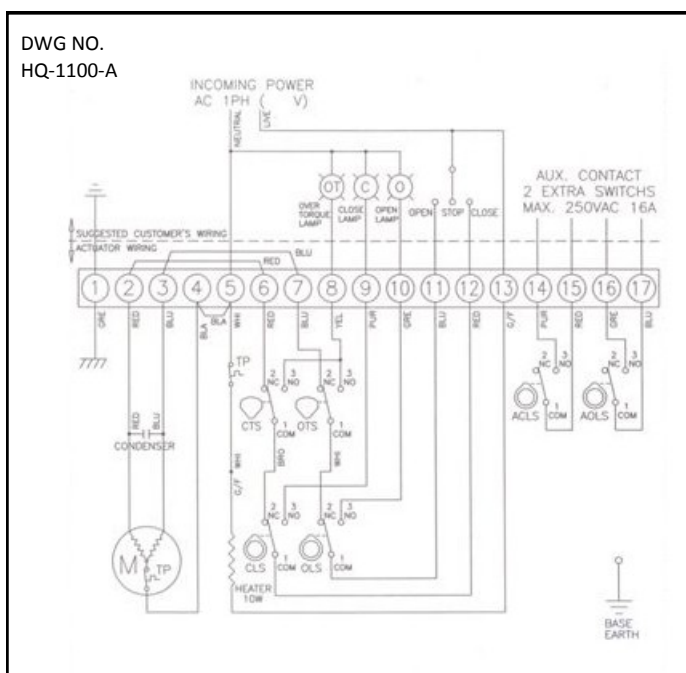


DIMENSIONS: HQ600-900



Wiring Diagrams ON/OFF

HQ200-900
110V AC & 240V AC

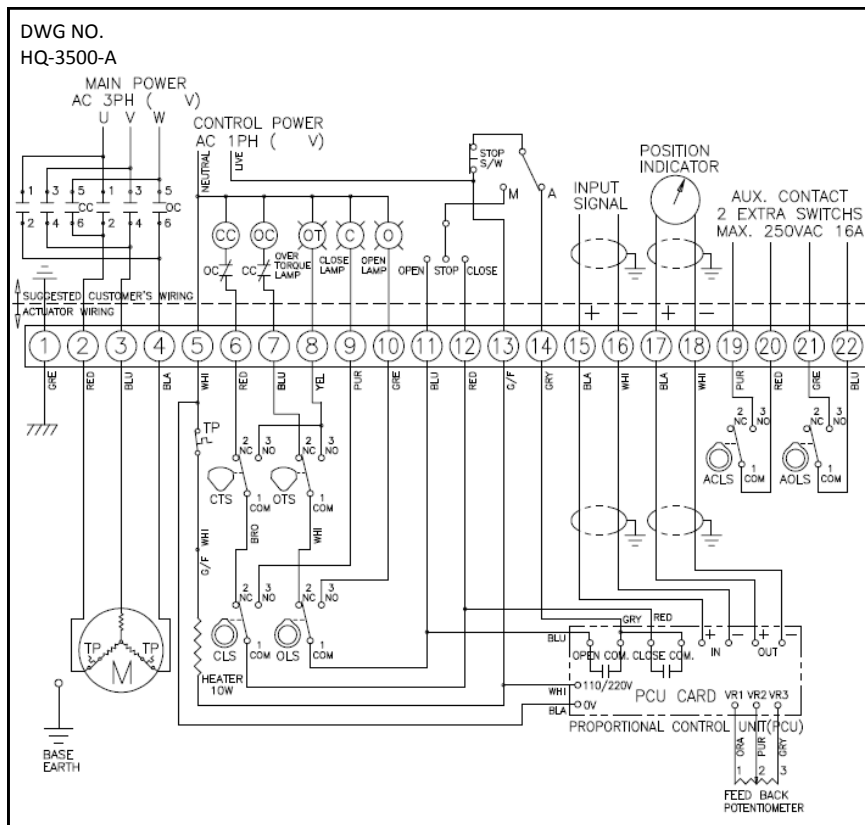


ELECTRIC QUARTER TURN ACTUATOR MODEL: HQ200 - 900



Wiring Diagrams Modulating

HQ200-900
415V AC



Actuator sizing to suit Challenger Valves

MODEL	WAFER B/FLY (WSSE)	LUGGED B/FLY (LSSE)	DOUBLE FLANGED (USSE)
HQ200	450	450	450
	500	500	500
HQ300	600	600	600
	700		700
HQ600	750	-	750
	800		
HQ800	900	-	800
HQ900	-	-	900