

ELECTRIC QUARTER TURN ACTUATOR MODEL: HQ006



FEATURES AND BENEFITS

- Compact and Lightweight design due to high grade Aluminium housing
- High torque and various control options to meet specific requirements.
- High Corrosion resistance due to hard anodizing internally and externally.
- Quality polyester powder coating internally and externally
- Space heater(2W) standard preventing moisture and condensation build up
- 4 Limit Switches (2 operation open/close, 2 additional for client use)
- Has a wide range of voltage options
- Small and compact nut design manual over-ride standard
- Multiple drillings on mounting base (to AS5211) allows easy mounting
- Large 11 point terminal block
- Captive cover bolts

APPLICATIONS

Challenger Valves and Actuators are the “**Right Choice for Valves and Actuation**” when quality matters.

HQ 006 electric actuator is specially designed for small size quarter turn valve operation such as Ball, Butterfly, Plug valves/ Dampers and similar usages.

Servicing industries such as : Water & Waste Water, Mining, Desalination, Pumping, Industrial Processing, Irrigation, Materials Handling and Chemical Services.



TECHNICAL SPECIFICATION

Construction : Quarter turn electric actuator

Voltage Option: 240V AC
110V AC
24V AC
24V DC

Maximum Output Torque: 60Nm

Operating Time: 12-14 seconds

Mounting: ISO 5211 (F03, F05, and F07)

Enclosure: IP67

Rated Current: 240V AC - .20A
110V AC - .40A
24V AC - .80A
24V DC - .80A

Duty Cycle: 50% (S4)

Temperature Range: -20°C to 70°C

Cable Entry: PG13.5



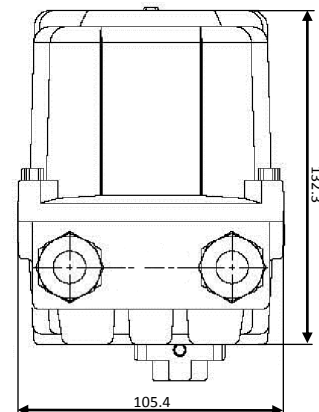
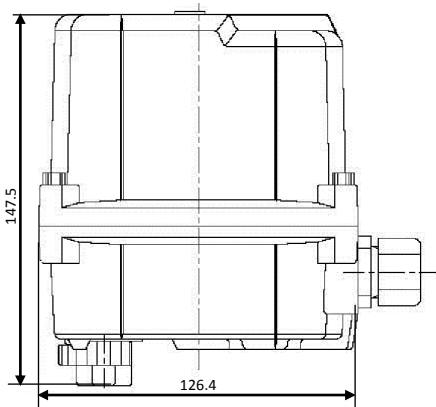
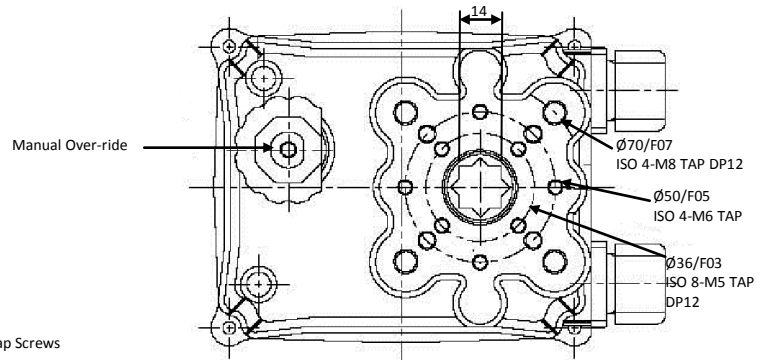
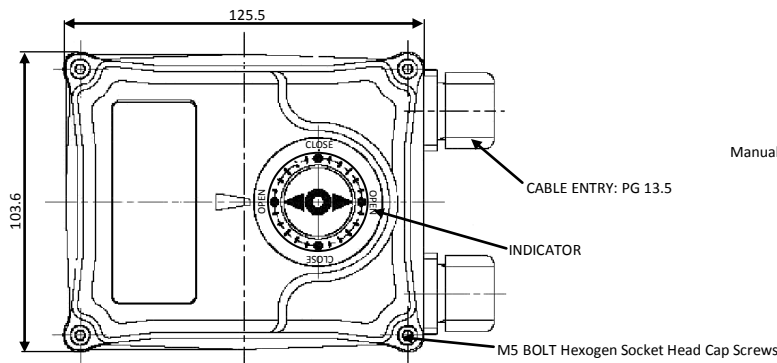
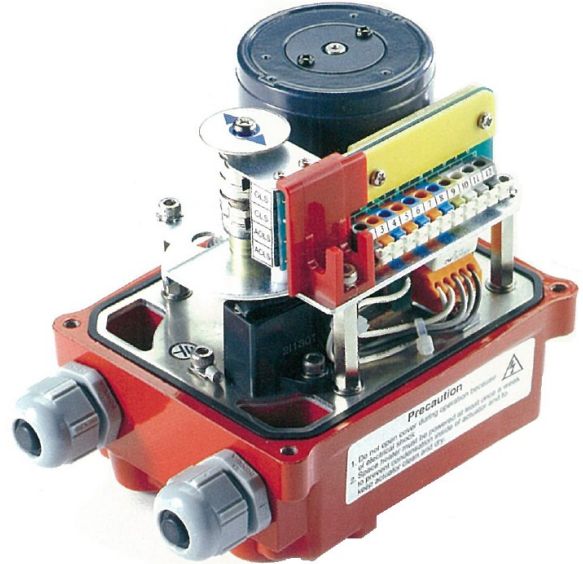
ELECTRIC QUARTER TURN ACTUATOR MODEL: HQ006



TECHNICAL DATA: OPTIONS

OPTIONS

- Position Indication Unit (Potentiometer Kit, PIU)
- Proportional Control Unit (PCU) (240V AC and 24V DC only)
 - Input Signal: 4-20mA OR 0-10V DC (240V AC only)
 - Output Signal: 4-20mA 0-10V DC
- Current Position Transmitter (Output Signal 4-20mA)
- Local Control Unit (LCU)

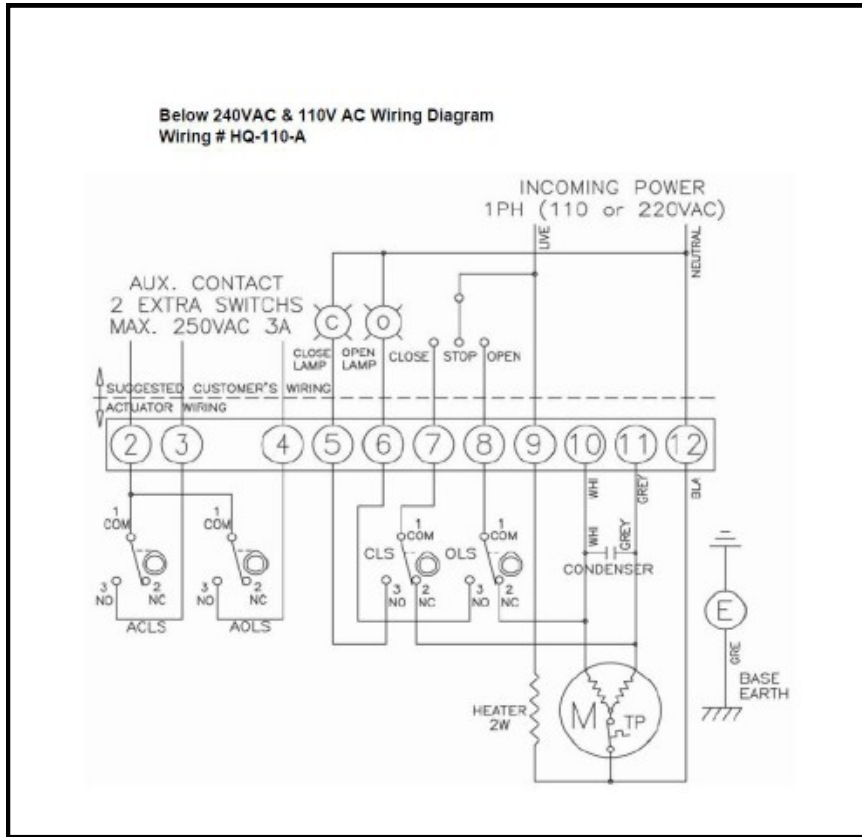


ELECTRIC QUARTER TURN ACTUATOR MODEL: HQ006

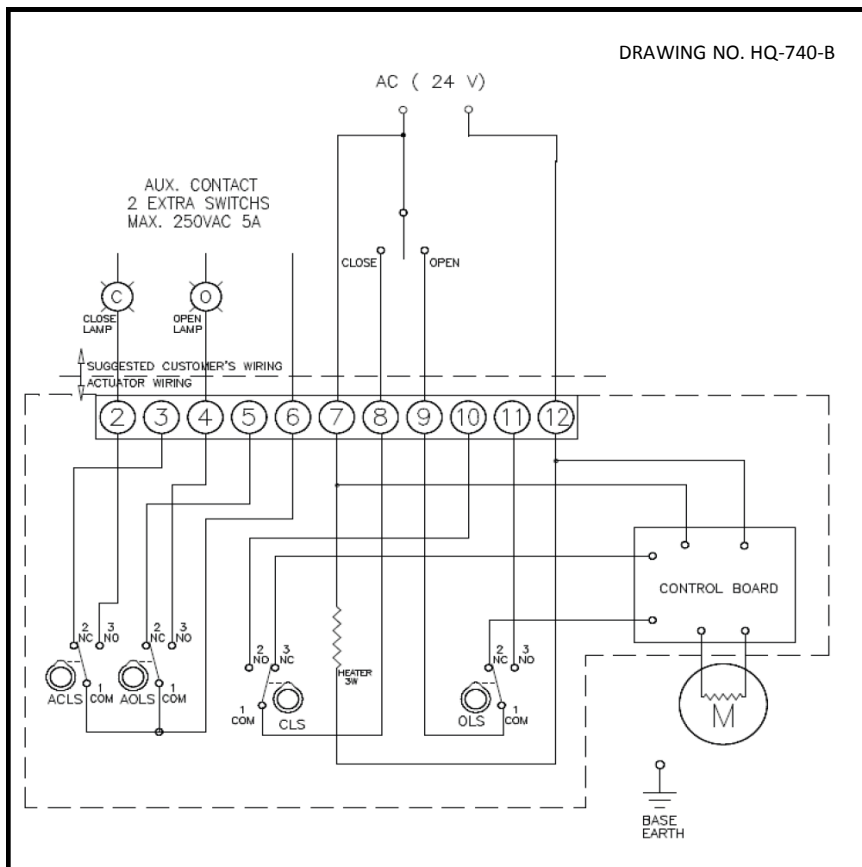


CHALLENGER
VALVES AND ACTUATORS

HQ 006 110V AC ON/OFF



HQ 006 24V AC ON/OFF

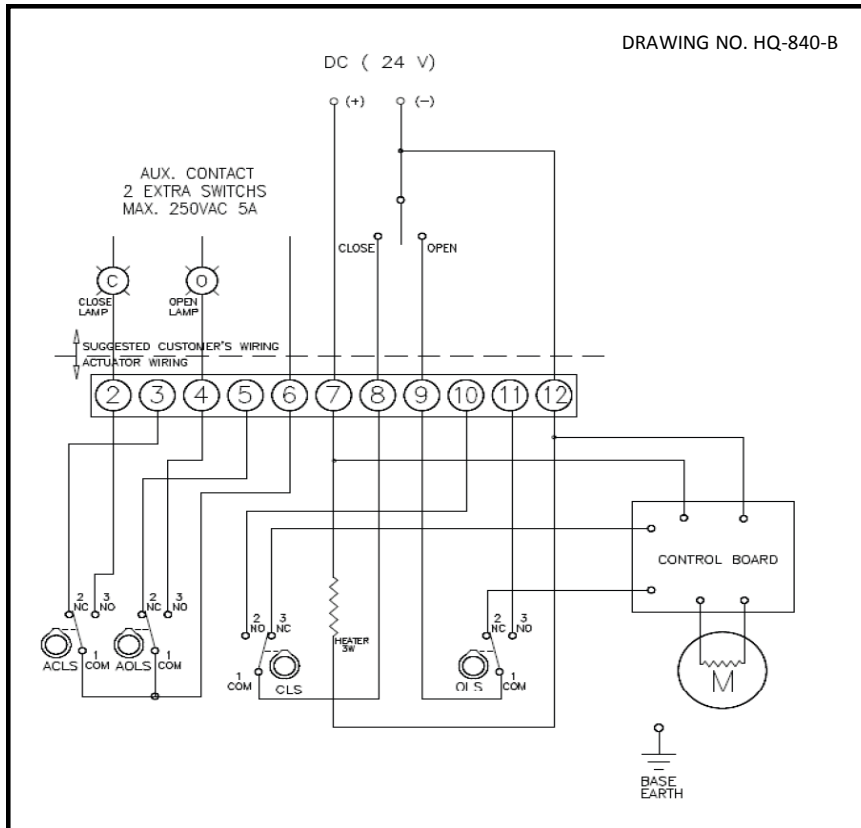


ELECTRIC QUARTER TURN ACTUATOR MODEL: HQ006



CHALLENGER
VALVES AND ACTUATORS

HQ 006 24V DC ON/OFF



SIZING ACTUATOR TO SUIT CHALLENGER VALVES

MODEL	WAFER B/FLY (WSSE)	LUGGED B/FLY (LSSE)	STAINLESS STEEL 3 PIECE BALL VALVE (SS3301)	STAINLESS STEEL 3 WAY BALL VALVE (SS490)	STAINLESS STEEL 2 PIECE FLANGE BALL VALVE (SS9010)	BRASS BALL VALVE (B501)	BRASS 3 WAY BALL VALVE (B505, B510)	PVC True Union (PVC 7 / PVC 8)
HQ-006	50 65 80 100	50 65 80 100	40 50	32 40	32	65 80	40 50	65 80

* All Figures (NB)

Brass BV



SS 2 PC Flanged



Brass 3 Way



SS 3 PC BSP



SS 3 Way



WSSE - HQ006 ACT

