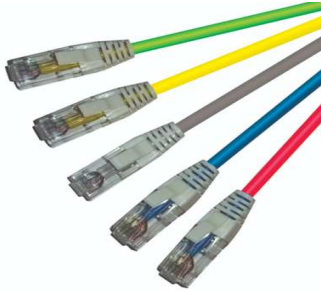


Cat.6A EL Patch Cords



R&Mfreenet Cat.6A patch cords are used for connecting the network equipment to patch panels and telecommunications outlets. They are suitable for frequencies of up to 500 MHz.

Features of Cat.6A

- Fulfill the requirements of Category 6A, Class EA (500MHz) according to the present standard of the ISO/IEC 11801.
- Complies with the Category 6A specifications of the IEC 60603-7-41 / IEC 60603-7-51 standard with the Cat.6A connection module
- Tested according to IEC 61935-2
- Each individual patch cord are tested transmission technology
- Can also use as Cat5e or Cat6 (backwards compatible)
- Strain relief are provided with wide function
- Strain relief according to TIA/EIA-568-B.1-1
- Lengths from 0.5 ,to 15m available
- Colors in grey, yellow, red, Blue (0.5 Mtr to 15Mtrs), orange and black(1,2,3&5)
- Impedance of 100 ohm
- Shielded and unshielded in LSZH versions available
- R&M Security system 1+3
- R&M environment system

Cat.6A Patch Cords Data Sheet

Materials

Plug Housing	Contacts	Contact Plating	Shielding
UL 94-V0 polycarbonate	Phosphor bronze (CuSn6)	0,7 µm selective gold plate	Tin-plated brass

Electrical Characteristics

Current Rating	Voltage Rating	Dielectric Withstanding Voltage	Insulation Resistance @20°C 100-500V DC @
1,5A (Maximum)@ 25°C	150 Veff (Maximum)	700 VAC, 1 min (60 Hz)	5000 MΩ.m (Minimum)

Mechanical Characteristics

Plug Tolerances and Dimensions	Operating temperature
Compliant IEC 60603-7	-20°C to 60°C

Patch Cord Characteristics Cat.6A

	U/UTP	U/FTP
Inner conductor diameter	AWG26/7	AWG26/7
Number of pairs	4	4
Screen 1 pair	Non	AL/ Folie
Outer screen	Non	Cu-braid
Jacket	LSZH	LSZH
Jacket Thickness	0.51 mm	0.51 mm
Bending Radius	Min.8x Cable Diameter	Min.8x Cable Diameter
Outer Diameter	max. 6.5 mm	max. 6.5 mm

Patch Cord EL Cat. 6A, U/UTP, 4P, LSZH, RJ45/u-RJ45/u

Length Mts	Gray	Green	Red	Yellow	Dark Blue	Orange	Black
0.5m	R834187	R834192	R834198	R834204	R834210	R837739	R837745
1.0m	R830779	R830809	R830801	R830784	R830805	R830813	R830817
1.5m	R830824	R834193	R834199	R834205	R834211	R837740	R837746
2.0m	R830780	R830810	R830802	R830798	R830806	R830814	R830818
3.0m	R830781	R830811	R830803	R830799	R830807	R830815	R830819
4.0m	R847670	R854938	R854945	R854954	R854963	R854973	R854982
5.0m	R830783	R830812	R830804	R830800	R830808	R830816	R830820
6.0m	R849268	R854939	R854946	R854955	R854964	R854974	R854983
7.0m	R841851	R854940	R854947	R854956	R854965	R854975	R854984
7.5m	R834188	R834194	R834200	R834206	R834212	R837741	R837747
8.0m	R850506	R853716	R854948	R854957	R854966	R854976	R854985
9.0m	R854937	R854941	R854949	R854958	R854968	R854977	R854986
10.0m	R834189	R834195	R834201	R834207	R834213	R837742	R837748
11.0m	R850505	R854942	R854950	R854959	R854969	R854978	R854987
12.0m	R850509	R854943	R854951	R854960	R854970	R854979	R854988
12.5m	R834190	R834196	R834202	R834208	R834214	R837743	R837749
13.0m	R850507	R853717	R854952	R854961	R854971	R854980	R854989
14.0m	R850508	R854944	R854953	R854962	R854972	R854981	R854990
15.0m	R834191	R834197	R834203	R834209	R834215	R837744	R837750