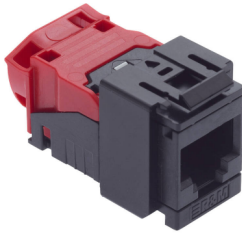


# Connection Module Cat. 6A EL, 1xRJ45/u, Snap-in, black, 10x



## DESCRIPTION

The module for the classic office cabling. Easy to install with solid Cat. 6<sub>A</sub> performance.

- RJ45 Cat. 6<sub>A</sub> EL connection module, unshielded
- Snap-in adapter
- Dust cover

090.7168

## FEATURE

- Meets the Cat. 6<sub>A</sub> ISO component specification (for the entire re-embedded plug range as specified by the standards ISO/IEC 11801, EN 50173, TIA/EIA 568.2-D, IEC 60603-7-51 and 60603-7)
- Exceeding the IEEE 802.3 an minimum requements for 10GBASE-T performance
- Achieves best transmission characteristics with R&Mfreenet Cat. 6<sub>A</sub> patch cables
- Gold-plated contact area and tin-plated insulation displacement contact area
- Capacitive and inductive compensation
- Compatible with Cat. 6<sub>A</sub> standard patch cords and cables
- Full mechanical and electrical backward compatibility with Cat. 5e/6
- RJ-11/12/14 compatible
- Fits into 3rd party outlets and patchpanel with 4 different adapter
- Tool-free (w/o special tools) connection of installation cables of AWG 22 - 26 plus stranded cables of AWG 22/7 - 26/7
- Wiring option according to TIA 568 A and B with parallel termination of the pairs without splitting of pair 3,6
- Label with color wiring chart, integrated production date and serialnumber (each module) for quality tracing
- Halogen-free materials
- PoE and PoE+ compatible
- 3P certified

## DESCRIPTION

The R&M*freenet* Cat. 6<sub>A</sub> EL connection modules, part of the Freenet cabling system, are ideal for voice, fast data transmissions and high bandwidth applications. This highperformance Cat. 6<sub>A</sub> module is perfect for use in 10 Gigabit Ethernet (10GBASE-T) and future high-speed applications up to 500 MHz.

## TECHNICAL DATA

DESCRIPTION	VALUE/VALUE RANGE
-------------	-------------------

**Connection Module Cat. 6A EL, 1xRJ45/u, Snap-in, black, 10x**

DESCRIPTION	VALUE/VALUE RANGE
Standard / norm	UL Recognized IEC 60603-7-41: Electrical Characteristics of the Telecommunication Outlets ISO/IEC 11801 EN 50173-1
Protection class IP	IP 20
PoE	Yes
Connector class	connection module
Shielding connector (A)	unshielded
Connector type (A)	RJ45
Category connector (A)	Cat. 6 <sub>A</sub> ISO
Holder for connector / module	Snap-in
Wiring diagram	T568A and T568B
Poles	8

**MECHANICAL DATA**

DESCRIPTION	VALUE/VALUE RANGE
Color	black / red

RJ45 connection module of Cat. 6<sub>A</sub> EL, for the setting up of transmission channels of Class E<sub>A</sub> with up to 4 connectors acc. to ISO/IEC 11801, EN 50173-1, (DIN EN 50173-1), complies with Cat. 6<sub>A</sub> requirements of the standards ISO/IEC 11801, EN 50173-1, as well the U.S. standard Cat. 6<sub>A</sub> according to TIA/EIA 568.2-D, re-embedded tested in acc. with IEC 60603-7-41 and 60512-27-100, interoperable and backwards compatible with Category 6 and Category 5e. Suitable for 10GBASE-T applications in acc. with IEEE 802.3™ Section Four up to 500 MHz and 100 m. Tested in line with R&M's manufacturing control, performing 100% inspection. Each module has an own serial number and is traceable.



Compatible with RJ standard plugs (RJ11, RJ12, RJ45), connection of installation cables AWG 26 - 22 (0.4 mm - 0.65 mm) and flexible cables AWG 26/7 - AWG 22/7 without special tools. Parallel pair termination without crossover in acc. with TIA 568-A/B, gold-plated bronze contacts for >1000 mating cycles, IDC contacts with ≥4 insertion cycles acc. to IEC 60352-3, contact resistance <5 mOhm, dielectric strength >1000 Veff. Supports PoE (IEEE 802.3af), PoEP (IEEE 802.3at), 4Ppoe (IEEE 802.3bt) and is compatible to IEC 60512-99-001/002. With integral cable strain relief, including dust cover. Red / black plastic housing.

Material: halogen-free and heavy-metal free in acc. with EU directives RoHS 2.

Connection module Cat. 6<sub>A</sub> EL, red / black, unshielded, dust cover and snap-in frame (black).

**OPTIONAL ACCESSORY**

**Connection Module Cat. 6A EL, 1xRJ45/u, Snap-in, black, 10x**

FOTO	DESCRIPTION	PU	PRODUCT NO.
	Cable Insert Cat. 6A EL, 4-5 mm Cable	100 pcs	R813797
	Adapter 90° Module RJ45 C6A-EL/u-10	10 pcs	R833666