

R&Mclassic

Cat.6A Patch Cords

Cat.6A classic Patch Cords

R&Mclassic Cat.6A patch cords are used for connecting the network equipment to patch panels and telecommunications outlets. They are suitable for frequencies of up to 500 MHz.



Features of Cat.6A Patch Cord

- Fulfills the requirements of Category 6A, Class E_A (500MHz) according to the present standard of TIA-568.2 and ISO/IEC 11801
- Complies with the Category 6_A specifications of the IEC 60603-7-41 / IEC 60603-7-51 connector standard
- Supports PoE (IEEE 802.3af), PoEP (IEEE 802.3at), 4PPoE (IEEE 802.3bt) and is compatible to IEC 60512-99-001/002 (*)
- Tested according to IEC 61935-2
- Lengths from 0.2 to 20m available
- Impedance of 100Ω
- LSZH versions

Cat.6A classic Patch Cords Data Sheet

Materials

| Plug Housing | Contacts | Contact Plating | Shielding |
|------------------------|----------------|--------------------|--------------------------|
| UL 94-V0 polycarbonate | Bronze (CuSn6) | 1,27 µm gold plate | Brass with nickel plated |

Electrical Characteristics

| General | Current Rating | Dielectric Withstanding Voltage | Insulation Resistance @20°C 100VDC |
|----------------------|----------------|---------------------------------|------------------------------------|
| Compliant to 60603-7 | 1.5A @ 25°C | 1000 VDC | ≥500 MΩ |

Mechanical Characteristics

| Plug Tolerances and Dimensions |
|--------------------------------|
| Compliant to IEC 60603-7 |

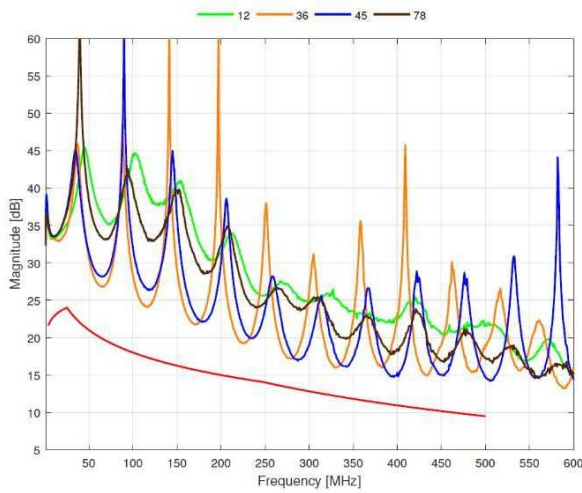
Environmental Characteristics

| Operating Temperature |
|-----------------------|
| -10°C to +60°C |

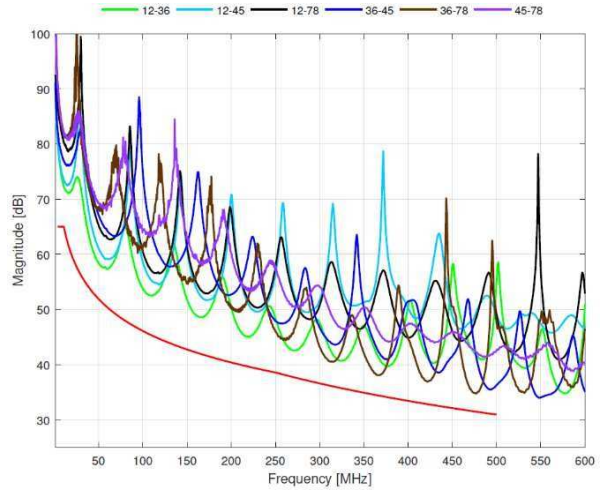
Patch Cord Characteristics Cat.6A classic

| | unshielded | shielded |
|--------------------------|--|--------------------------------|
| Inner conductor diameter | AWG26/7 | AWG26/7 |
| Cable construction | U/FTP | U/FTP |
| Number of pairs | 4 | 4 |
| Screen per pair | ANEXT suppression foil | AL/ foil |
| Outer screen | None | None |
| Jacket | LSZH | LSZH |
| Bending radius | ≥50mm operation (without load) | ≥50mm operation (without load) |
| Outer diameter | nominal 5.7 mm | nominal 5.7 mm |
| Wiring method | standard: TIA568A, optional: TIA568B | |
| Jacket colours | gray, yellow, red, blue, green, orange, black, violet, white | |

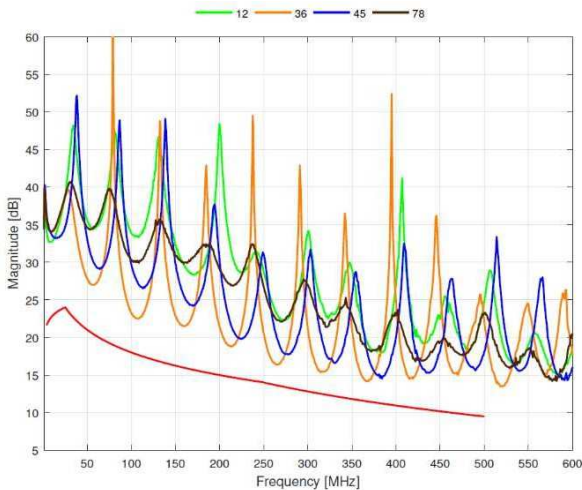
Typical Return Loss Cat.6A unshielded patch cord 2m



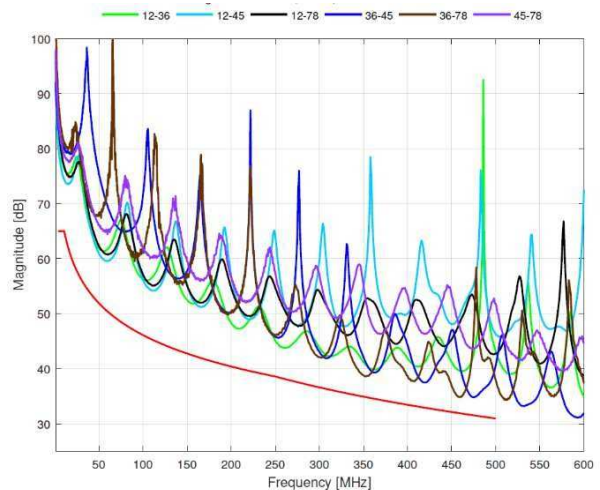
Typical NEXT Cat. 6A unshielded patch cord 2m



Typical Return Loss Cat. 6A shielded patch cord 2m



Typical NEXT Cat. 6A shielded patch cord 2m



Patch Cord Cat. 6A, Unshielded, 4P, LSZH, RJ45/u-RJ45/u

| Length (m) | Gray | Yellow | Red | Blue | Green | Orange | Black | Violet | White |
|------------|--------|--------|--------|--------|--------|--------|--------|--------|--------|
| 0.5 | 875953 | 880923 | 880940 | 880948 | 880957 | 880965 | 880973 | 880988 | 880996 |
| 1.0 | 875954 | 880924 | 880941 | 880949 | 880958 | 880966 | 880974 | 880989 | 880997 |
| 1.5 | 875955 | 880926 | 880942 | 880950 | 880959 | 880967 | 880982 | 880990 | 880998 |
| 2.0 | 875956 | 880930 | 880943 | 880951 | 880960 | 880968 | 880983 | 880991 | 880999 |
| 3.0 | 875957 | 880935 | 880944 | 880952 | 880961 | 880969 | 880984 | 880992 | 881000 |
| 5.0 | 875958 | 880936 | 880945 | 880953 | 880962 | 880970 | 880985 | 880993 | 881001 |
| 7.5 | 875959 | 880937 | 880946 | 880954 | 880963 | 880971 | 880986 | 880994 | 881002 |
| 10.0 | 875960 | 880939 | 880947 | 880955 | 880964 | 880972 | 880987 | 880995 | 881003 |

Patch Cord Cat. 6A, Shielded, 4P, LSZH, RJ45/s-RJ45/s

| Length (m) | Gray | Yellow | Red | Blue | Green | Orange | Black | Violet | White |
|------------|--------|--------|--------|--------|--------|--------|--------|--------|--------|
| 0.5 | 875940 | 881145 | 881153 | 881161 | 881170 | 881179 | 881187 | 881195 | 881203 |
| 1.0 | 875943 | 881146 | 881154 | 881162 | 881171 | 881180 | 881188 | 881196 | 881204 |
| 1.5 | 875944 | 881147 | 881155 | 881163 | 881172 | 881181 | 881189 | 881197 | 881205 |
| 2.0 | 875945 | 881148 | 881156 | 881164 | 881173 | 881182 | 881190 | 881198 | 881206 |
| 3.0 | 875946 | 881149 | 881157 | 881165 | 881174 | 881183 | 881191 | 881199 | 881207 |
| 5.0 | 875947 | 881150 | 881158 | 881166 | 881176 | 881184 | 881192 | 881200 | 881208 |
| 7.5 | 875948 | 881151 | 881159 | 881167 | 881177 | 881185 | 881193 | 881201 | 881209 |
| 10.0 | 875949 | 881152 | 881160 | 881168 | 881178 | 881186 | 881194 | 881202 | 881210 |