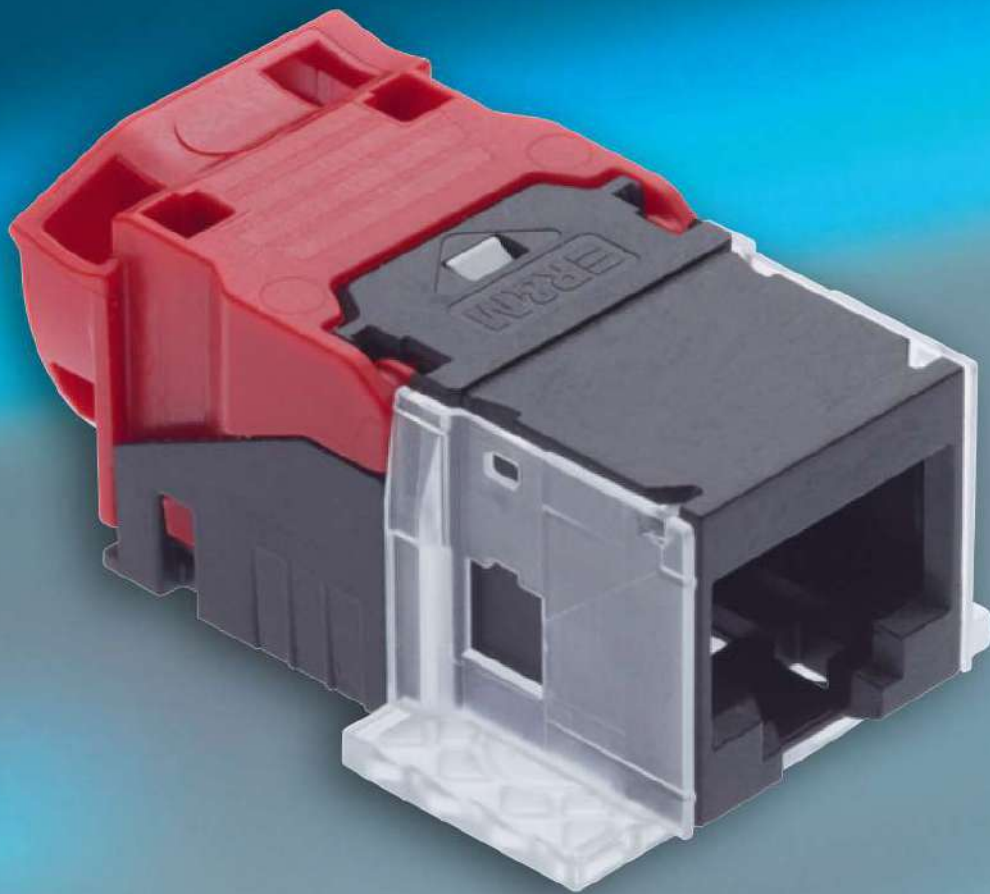


# Quickreference: Cat.6<sub>A</sub> EL / Class E<sub>A</sub> unshielded

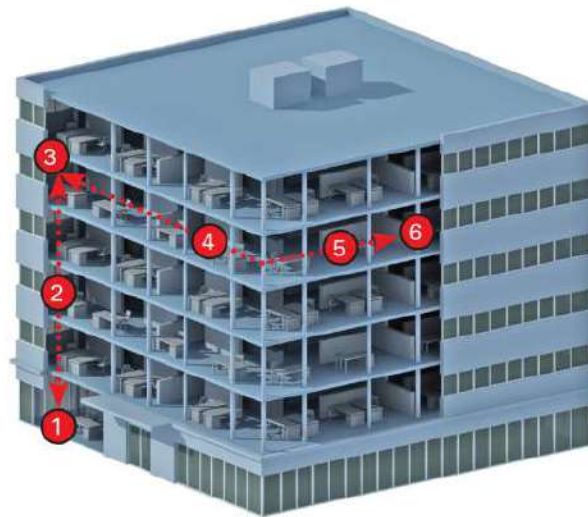
Horizontal floor cabling subsystem  
with unshielded twisted pair technology



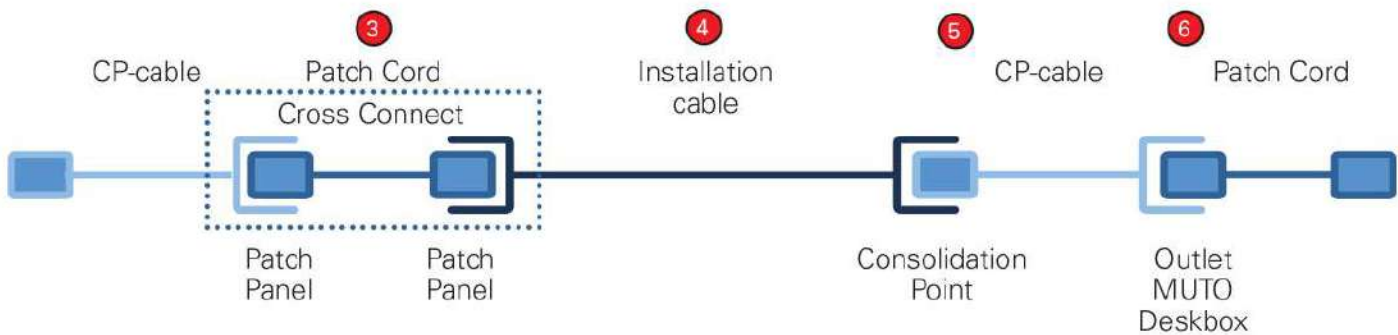
Version: June 2017

## SYSTEM OVERVIEW

The unshielded Cat.6<sub>A</sub> / Class E<sub>A</sub> product line with especially userfriendly "Easy Lock" termination is intended for generic cabling systems for applications up to 10 GBit/s with normal requirements. It is best suited for mid-sized installations with high data volume.



- 1: Building distributor
- 2: Backbone cabling
- 3: Floor distributor
- 4: Horizontal cabling
- 5: Consolidation Point
- 6: Terminal outlet



Cabling Structure	Generic cabling system with up to 4 connectors
Channel Performance	Class E <sub>A</sub> acc. ISO/IEC 11801 / EN 50173
PL Performance	Class E <sub>A</sub> acc. ISO/IEC 11801 / EN 50173
Connectivity	RJ45 Cat.6 <sub>A</sub> EL /u acc. IEC 60603-7-51

Certificates from independent test institutes	Yes
1G Ethernet Support	Yes
10G Ethernet Support	Yes
40G / 100G Ethernet Support	No
High Density Support	No
Garantie System	25 Years

## RJ45 MODULE

090.7165

Connection Module Cat.6<sub>A</sub> EL,  
1xRJ45/u

**R813506**      **10x**  
**R813507**      **100x**

090.7168

Connection Module Cat.6<sub>A</sub> EL,  
1xRJ45/u, Snap-in, black

**R813518**      **10x**  
**R813519**      **100x**

090.7179

Connection Module Cat.6<sub>A</sub> EL,  
1xRJ45/u, Special

**R813510**      **10x**  
**R813511**      **100x**

090.7171

Connection Module Cat.6<sub>A</sub> EL,  
1xRJ45/u, Keystone

**R813514**      **10x**  
**R813515**      **100x**

090.6789

Connection Module Cat.6<sub>A</sub> EL,  
1xRJ45/u, adapter No.1

**R813521**      **10x**

## PATCHCORDS

090.6827

Patch Cord Cat.6<sub>A</sub>, S/FTP, 4P,  
LSFRZH, gray, RJ45/u-RJ45/u

**R509869**      **0.5m**  
**R509870**      **1.0m**  
**R509871**      **1.5m**  
**R509872**      **2.0m**  
**R509873**      **3.0m**  
**R509874**      **5.0m**  
**R509875**      **7.5m**  
**R509876**      **10.0m**  
**R509877**      **12.5m**  
**R509878**      **15.0m**  
**R509879**      **20.0m**

## Module compatibility reference:

- Cat.6<sub>A</sub> EL, 1xRJ45/u
- Cat.6<sub>A</sub> EL, 1xRJ45/u, Snap-in
- ▲ Cat.6<sub>A</sub> EL, 1xRJ45/u, Special
- ◆ Cat.6<sub>A</sub> EL, 1xRJ45/u, Keystone
- ★ Cat.6<sub>A</sub> EL, 1xRJ45/u, adapter No.1