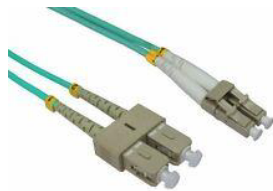


# FIBER-OPTIC PATCH-CORDS MM OM3 DX

## Datasheet



### Patch-cord MM OM3 DX SCPC-LCPC

#### Scope of supply:

- Patch-Cord
- Test report printed on P/N Label

1 pc

## TECHNICAL DATA

### Duplex Cable

Criteria		Value	Standard
Cable $\varnothing$ [mm]		2.0 ( $\pm$ 0.1)	
Material		LSZH	
Secondary coating	Diameter [ $\mu$ m] Material	900 ( $\pm$ 5%) LSZH	
Nominal weight [kg/km]		3.7	
Temperature range [ $^{\circ}$ C]	Storage Installation Operation	-25 up to +60 -10 up to + 50 -20 up to + 60	IEC 61300-2-22
Maximum tensile strength [mm]	Installation Operation	200 100	IEC 60794-1-2 E1
Minimum bending radius [mm]	Installation Operation	50 25	IEC 60794-1-2 E11
Compressive strength [N/10cm]	Short term Permanent	250 100	IEC 60794-1-2 E13
Heat of combustion [MJ/m]		0.08	

### Fiber types available

Description	ISO/IEC 11801 EIA/TIA	IEC 60793-2-10
Multimode (as per standard ITU-T G.651)	OM1 OM2 OM3 OM4 OM5	A1a.1 A1a.1 A1a.2 A1a.3 A1a.4

### Optical properties (as per IEC 61753-1)

Description		Grade B/2	Grade C/2	Grade D/3
Insertion loss IL [dB]	97%	$\leq$ 0.35	$\leq$ 0.50	$\leq$ 1.00
	Typical value	$\leq$ 0.12	$\leq$ 0.25	$\leq$ 0.50
Return loss RL [dB]	97%	$\geq$ 45	$\geq$ 45	$\geq$ 35
	Typical value	$\geq$ 55	$\geq$ 55	$\geq$ 45

# FIBER-OPTIC PATCH-CORDS MM OM3 DX

## Datasheet

### Mechanical properties

Criteria		Value	Standard
Mating durability [times]		500x (minimum)	IEC 61300-2-2
Retention [N / s]	Cable Pigtail	100 / 120 5 / 60	IEC 61300-2-4
Vibration		10-55Hz, 1 octave / min. 3 axis of 15 cycles, 0.5h / axis amplitude 0.75 mm	IEC 61300-2-1
Repeated bending [100 Cycles]	Cable Pigtail	Load 5N (-90° / 0° / +90° / 0°C Load 0.2N (-90° / 0° / +90° / 0°C)	IEC 61300-2-44
Static side load [N / min]	Cable Pigtail	1 / 60 0.2 / 5	IEC 61300-2-42
Drop [m]		1.5 (5 times)	IEC 61300-2-12

### Part Numbers P/N

P/N	Description	P/N	Description
R222134	PC-DX-SCPC-LCPC-2MM-OM3-1.0M		
R222135	PC-DX-SCPC-LCPC-2MM-OM3-2.0M		
R222134	PC-DX-SCPC-LCPC-2MM-OM3-3.0M		
R222125	PC-DX-SCPC-LCPC-2MM-OM3-5.0M		
R222126	PC-DX-SCPC-LCPC-2MM-OM3-10.0M		