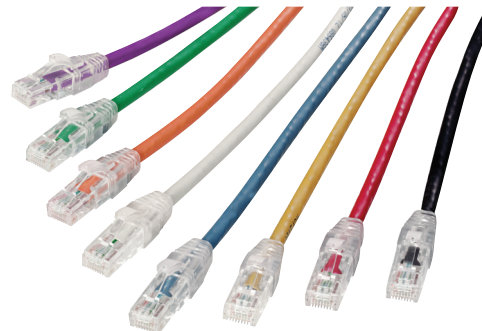


PowerCat 5e U/UTP Patch Cord

Molex PowerCat 5e U/UTP Patch Cords are key components of PowerCat 5e U/UTP End-to-End Solution and are designed to support data networks for 10/100BASE-T and 1000BASE-T applications.

The patch cable is made from high quality four pair 24 AWG stranded copper wire. Available in a range of colors and lengths, PowerCat 5e patch cords are pre-terminated with RJ45 plugs and feature anti-snag slim strain relief slip on boots.



FEATURES AND ADVANTAGES

4 pair 24 AWG stranded copper wire

Pre-terminated with WE8W plugs

Slim clear anti-snag slip on boots

Suitable for EIA 568A or 568B wiring

LSOH sheath

RoHS Compliant

SPECIFICATIONS

Commercial Standards

ISO/IEC 11801:2002/

Amd 2:2010 Cat 5

TIA-568.2-D Cat 5E

Pending approvals:

UL-1863, CSA C2.2

Mechanical

Cable

Conductor size:

24 AWG stranded copper wire

Nom. O.D.: 5.4mm

Sheath: LSOH

Bend radius: 4X O.D.

Operating temperature range:

-25°C to 55°C

Plug

MIN operating life: 750 insertion cycles

RJ45 plug and boot material:

Clear polycarbonate

Contact material:

0.35mm thick copper alloy

Contact plating: Selective gold

RJ45 plug dimensions compliant with:

ISO/IEC 60603-7-4 and FCC 47 Part 68

Electrical

Max voltage: 150 VAC (max)

Max current: 1.5A @ 25°C

PoE

Our PowerCat 5e system is suitable for PoE applications as defined below:

IEEE 802.3bt from Type 1 to Type 4, and CISCO UPoE+

Notes:

For new installations of PoE Type 3 / Class 5 and above that wish to be eligible for the Molex 25 year Application Assurance

Warranty, we require Category 6A cable to be used throughout.

To confirm your PoE / RP3 cabling design is eligible for the Molex 25 year Application Assurance Warranty, your design must be verified and validated with the Molex PoE Calculator. Read more <https://www.molexces.com/poe-calculator>

Molex recommends that the PoE feature on an individual switch port are power disabled prior to unplugging the associated powered Device. Molex recommends that the full range of PowerCat 5e products be used in a system to maximize cabling and PoE performance. Details on Molex requirements for Warranty can be found at <https://www.molexces.com/about-us/our-warranty/>

www.molexces.com/products/copper/cat5e

PowerCat 5e U/UTP Patch Cord

ORDERING INFORMATION

| Order No. | SAP No. | Description |
|--------------|---------------|--|
| PCD-01000-** | Consult Molex | PowerCat 5e U/UTP Patch Cord LS0H - 0.5m |
| PCD-01001-** | Consult Molex | PowerCat 5e U/UTP Patch Cord LS0H - 1m |
| PCD-01002-** | Consult Molex | PowerCat 5e U/UTP Patch Cord LS0H - 1.5m |
| PCD-01003-** | Consult Molex | PowerCat 5e U/UTP Patch Cord LS0H - 2m |
| PCD-01005-** | Consult Molex | PowerCat 5e U/UTP Patch Cord LS0H - 3m |
| PCD-01009-** | Consult Molex | PowerCat 5e U/UTP Patch Cord LS0H - 5m |
| PCD-01013-** | Consult Molex | PowerCat 5e U/UTP Patch Cord LS0H - 7m |
| PCD-01019-** | Consult Molex | PowerCat 5e U/UTP Patch Cord LS0H - 10m |

Insert color code in place of ** in part number when ordering Patch Cords: 0C=Red, 0E=Gray, 0H=Blue, 0J=Green, 0K=Yellow, 0W=White, 0P=Purple, 0N=Orange, BK=Black

www.molex.com/products/copper/cat5e

Molex is a registered trademark of Molex, LLC in the United States of America and may be registered in other countries; all other trademarks listed herein belong to their respective owners. This information is correct at the time of publication, specifications are subject to change.