

28 Port Gigabit Intelligent Standard PoE Switch

OVERVIEW

28 Port Gigabit Intelligent Standard PoE Switch, using high-quality high-speed network IC and the most stable PoE chip, PoE port meets 802.3af / 802.3at standard, this series of PoE Switch can be 10/100/1000M Ethernet. The network provides a seamless connection, and the PoE power port can automatically detect and power the powered devices that comply with the IEEE802.3af / IEEE802.3at standards. The non-PoE device intelligently detects no power and only transmits data.

PoE is Power over Ethernet, which refers to the transmission of data signals to some IP-based terminals (such as IP phones, wireless access AP, network cameras, etc.), but also provides DC power for the device. Technically, these devices that receive DC power are called powered devices.

With simple and convenient installation and maintenance methods and rich business features, it helps users to build a safe and reliable high-performance network. It is mainly located in the core or convergence layer of user networks such as industrial parks, buildings, factories and mines, government agencies, and residential broadband; it can be widely used in Ethernet access scenarios such as small and medium-sized enterprises, Internet cafes, hotels, and schools.



MAIN FEATURES

- 24* 10/100/1000M PoE Ports+2*Gigabit Uplink+2* Gigabit SFP Ports.
- Comply with IEEE802.3, IEEE802.3u, IEEE802.3ab Standard.
- Ethernet Ports support 10/100/1000M self- adaptive.
- The AI mode is automatically enabled 10M speed for Ports 17~24 in Extend mode.
- PoE priority is supported, from port 1 to port 24, which is enabled by default.
- Flow control mode: full-duplex adopts IEEE 802.3x standard, half-duplex adopts Back pressure standard.
- Zero configuration feature, automatically supplied to adaptive equipment.
- Panel indicator monitoring status and help failure analysis.
- With DIP switch, support VLAN, Default and Extend modes.
- Support port lightning surge: common mode 4KV, differential mode 2KV; Electrostatic ESD: air 8KV, contact 6KV.

APPLICATION ENVIRONMENT

- Metro Optical Broadband Network: Data network operators such as telecommunications, cable TV, and network system integration.
- Broadband private network: Suitable for financial, government, oil, railway, electric power, public security, transportation, education and other industries.
- Multimedia transmission: Integrated transmission of images, voice and data, suitable for remote teaching, conference TV, videophone and other applications.
- Real-time monitoring: Simultaneous transmission of real-time control signals, images and data..

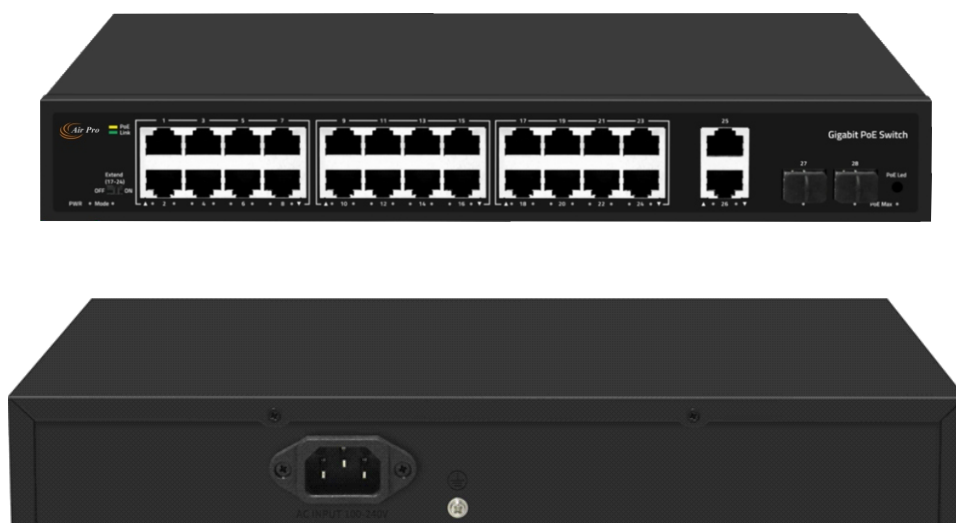
TECHNICAL SPECIFICATIONS

I/O Interface	
Power	AC100-240V50/60Hz
Ethernet	24*Gigabit PoE Ports, 2*Copper Uplink ports, 2*Gigabit SFP Uplink Ports
Performance	
Bandwidth	56Gbps
Pack forward rate	41.644Mpps
Package Cache	3Mbit
MAC Address	8K
Jumbo Frame	9216Kbytes
Forwarding Mode	Store and forward
MTBF	100000 hour
Standard	
Network protocol	IEEE802.3 (Ethernet) IEEE802.3u (Fast Ethernet) IEEE802.3ab (Gigabit Ethernet) IEEE802.3x (Flow Control) IEEE 802.3z (Gigabit Ethernet Fiber Standard)
PoE Protocol	IEEE802.3af (15.4W) IEEE802.3at (30W)
Industry Standard	EMI: FCC Part 15 CISPR (EN55032) class A EMS: EN61000-4-2 (ESD), EN61000-4-5 (Surge)
Network Medium	10Base-T: Cat 3, 4, 5 Class or above UTP/STP (≤ 100m) 100Base-TX: Cat 5 Class or above UTP/STP (≤ 100m) 1000Base-TX: Cat 5 Class or above UTP/STP (≤ 100m)
Optical Medium	Multimode optical fiber: 50/125, 62.5/125, 100/140um Single-mode optical fiber: 8/125, 8.7/125, 9/125, 10/125um
Environment Standard	
Working Environment	Working temperature: -10~50°C Storage temperature: -40~70°C Working humidity: 10%~90%, non-condensing Storage humidity: 5%~95%, non-condensing
Indication	
LED Indicator	PWR (Power) , 1-28 Green Light(Link &Data), 1-24 (Yellow Light) , PoE Led Key
PWR	On: Powered on Off: Powered off
1-28Green Light (Link &Data)	On: Link normal Off: Link blocked Flashing: Data transmitting

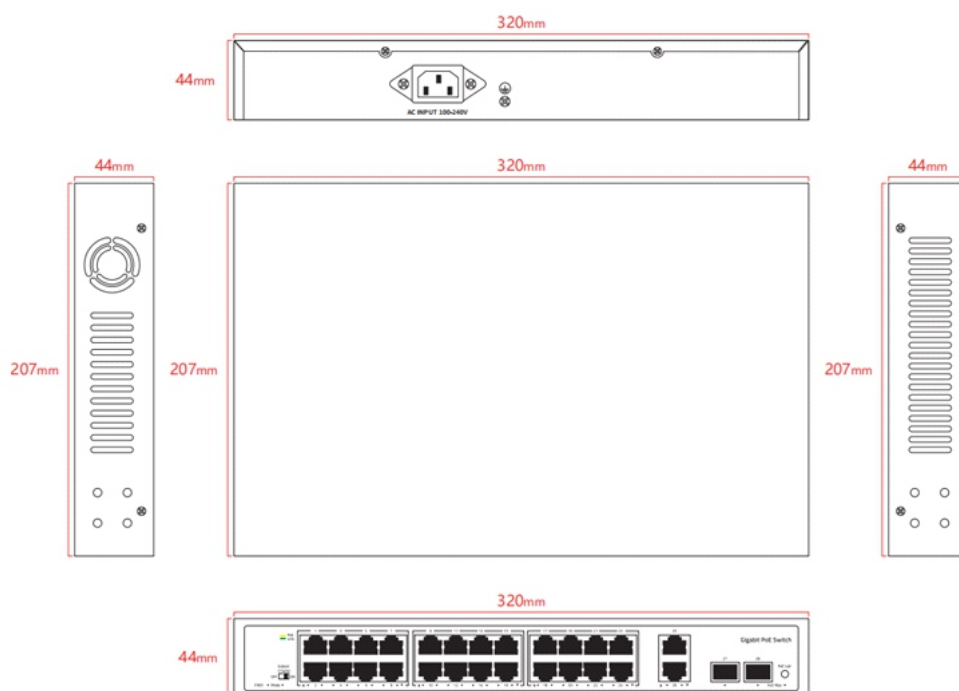
TECHNICAL SPECIFICATIONS

Indication	
1-24 (Yellow Light)	On: PoE power supply is normal Off: PoE not powered
PoE Max PoE power light	Off: indicates PoE power usage is less than 90% Flashing: indicates PoE power usage of $90\% \leq P \leq 95\%$ On: indicates that PoE power is used at $95\% < P < 100\%$
Mode DIP Switch light	On: Extend on Off: Extend off
PoE Led Key	Dual color light selection: default green (link data), switch yellow light (PoE)
Extend DIP Switch	OFF: Common mode, all interfaces can communicate with each other, the transmission distance is less than 100 meters, the transmission rate is 10/100/1000M adaptive; The port AI mode is disabled ON: Link extension mode, 17-24 ports force 10M, link 250M (enable PoE watchdog), Port AI mode is enabled;
Physical Specification	
Structure Size	Product Dimensions: 320*207*44mm Package Dimensions: 370*290*85mm Product N.W: 1.78KG Product G.W: 2.28KG
Packing Info	Carton Dimensions: 445*310*390mm Packing Quantity: 5 PCS Packing Weight: 12.4KG
Power Voltage	Input Voltage: AC 100-240 V 50-60Hz Supply Power: 52V /5.76A
Power	Non PoE board power: $\leq 15W$ PoE power: $\leq 300W$
Package List	Switch 1 pc, Power cord 1 pc, User manual 1 pc, Certification 1 pc
Order Info	
AP-ESG4024P-2G2FX	28 Port Gigabit Intelligent Standard PoE Switch

【Product Rendering】



【Product Structure】



www.airpro.in