



CATCHMASTER[®]

Protecting
environments &
improving lives

SINCE 1977



CONTENTS

03/
RODENT

11/
FLY

16/
CRAWLING INSECT

19/
YELLOW JACKET

25/
WILDLIFE

27/
DEAD END

28/
DISPLAYS

Who we are

Established in the early 1950's, AP&G Co., has its roots in the formulation and production of specialty adhesives. In 1977, AP&G introduced the Catchmaster® brand and began to focus on developing adhesives for pest management applications. AP&G is now a well-established industry leader and has consistently produced new and innovative pest management solutions.

Our products are sold by major retail chains in the U.S. and in over 60 countries worldwide. AP&G's knowledge of adhesive technology ensures that the Catchmaster® name has been rigorously tested in our quality control lab as well as in "real world" field settings. AP&G's passion is creating intelligent pest solutions, which serve in brand's mission of protecting environments and improving lives.



Proud to be
family owned



Headquartered in
Bayonne, NJ

Stay connected

Subscribe to the Catchmaster® eNewsletter and follow us online to get to know the latest updates and product information. Visit our website for tips, FAQ's, consumer resources, where to buy, blog articles and much more!

1 800.458.7454 | info@catchmaster.com | catchmaster.com



SCAN HERE

TO VISIT OUR WEBSITE



RODENT



102 | MOUSE & INSECT

These heavy duty traps are professional strength and require no additional baits. An alternative to glue boards that may not hold up as well in damp or humid areas like basements or bathrooms. When deployed under normal conditions our long-lasting traps are effective for up to one full year. Our adhesive formula has been specially designed to prevent hardening that can limit effectiveness.

102 - 2 Pack - J-HOOK

Packs per case: 21 | Pack Dimensions: 5.25" x 5" x 0.75"
Case Dimensions: 10.5" x 5.5" x 11" | Ti/Hi: 32/5
Cases per pallet: 160 | Case Weight: 3 lbs
UPC: 029049001021

102SD - 2 Pack - Shelf Display

Packs per case: 12 | Pack Dimensions: 5.25" x 5" x 0.75"
Case Dimensions: 10.875" x 5.75" x 5.75" | Ti/Hi: 28/10
Cases per pallet: 280 | Case Weight: 2 lbs
UPC: 029049001021



104-12 | MOUSE & INSECT

These heavy duty traps are professional strength and require no additional baits. An alternative to glue boards that may not hold up as well in damp or humid areas like basements or bathrooms. When deployed under normal conditions our long-lasting traps are effective for up to one full year. Our adhesive formula has been specially designed to prevent hardening that can limit effectiveness.

104 - 12 Pack - J-HOOK

Packs per case: 12 | Pack Dimensions: 5.25" x 7.3125" x 0.75"
Case Dimensions: 11" x 6.25" x 8" | Ti/Hi: 28/7
Cases per pallet: 196 | Case Weight: 3 lbs
UPC: 029049104036

104SD - 4 Pack - Shelf Display

Packs per case: 12 | Pack Dimensions: 5.25" x 8.25" x 0.75"
Case Dimensions: 11.125" x 8.875" x 11.25" | Ti/Hi: 27/7
Cases per pallet: 196 | Case Weight: 3 lbs
UPC: 029049001045



106SD | MOUSE & INSECT

Come in the same strong formula that the pro's use. It is safer to use around children and pests than other methods of pest control. The trays are ready to use, no additional baits needed. Use as an alternative to glue boards that may not hold up as well in damp or humid areas like basements or bathrooms. When deployed under normal conditions our long-lasting traps are effective for up to one full year. Our adhesive formula has been specially designed to prevent hardening that can limit effectiveness.

106SD - 6 Pack - Shelf Display

Packs per case: 12 | Pack Dimensions: 5.375" x 10.50" x 0.75"
Case Dimensions: 6" x 11" x 11" | Ti/Hi: 12/10
Cases per pallet: 120 | Case Weight: 4.5 lbs
UPC: 029049001069



106WRG | COLD WEATHER MOUSE TRAPS

The Cold Temperature mouse traps is the only cold weather mouse tray available. Effective in temperatures as low as 0 Fahrenheit. Professional strength adhesive and non-toxic, home & family safe

106WRG - 6 Pack - Shelf Display

Packs per case: 12 | Pack Dimensions: 5.375" x 10.50" x 0.75"

Case Dimensions: 6" x 11" x 11" | Ti/Hi: 12/10

Cases per pallet: 120 | Case Weight: 4.5 lbs

UPC: 029049106979



402WRG | COLD WEATHER RAT TRAPS

The Cold Temperature mouse traps is the only cold weather mouse tray available. Effective in temperatures as low as 0 Fahrenheit. Professional strength adhesive and non-toxic, home & family safe

402WRG - 2 Pack - Shelf Display

Packs per case: 12 | Pack Dimensions: 5.3125" x 10.5" x 0.8125"

Case Dimensions: 12.125" x 5.75" x 10.875" | Ti/Hi: 12/10

Cases per pallet: 120 | Case Weight: 7 lbs

UPC: 029049402972



402 | RAT & MOUSE

These trays come in the same strong formula that the pro's use. It is safer to use around children and pests than other methods of pest control. The trays are ready to use, no additional baits needed. Use as an alternative to glue boards that may not hold up as well in damp or humid areas like basements or bathrooms. When deployed under normal conditions our long-lasting traps are effective for up to one full year. Our adhesive formula has been specially designed to prevent hardening that can limit effectiveness.

402SD - 2 Pack - Shelf Display

402F - 2 Pack - French / English Packaging

Packs per case: 12 | Pack Dimensions: 5.3125" x 10.5" x 0.8125"

Case Dimensions: 12.125" x 5.75" x 10.875" | Ti/Hi: 12/10

Cases per pallet: 120 | Case Weight: 7 lbs

UPC: 029049004022



404 | RAT & MOUSE

Pre-Baited and includes Hercules Putty™ fastener. Hercules Putty anchors the trap to the ground and helps to prevent drag off. These heavy duty traps are professional strength and require no additional baits. An alternative to glue boards that may not hold up as well in damp or humid areas like basements or bathrooms.

When deployed under normal conditions our long-lasting traps are effective for up to one full year. Our adhesive formula has been specially designed to prevent hardening that can limit effectiveness.

404SD - 2 Pack - Shelf Display

Packs per case: 12 | Pack Dimensions: 5.3125" x 10.5" x 0.8125"

Case Dimensions: 11" x 6" x 11" | Ti/Hi: 12/8

Cases per pallet: 120 | Case Weight: 12 lbs

UPC: 029049004046



424XL | JUMBO RAT TRAY

These heavy duty traps are professional strength and require no additional baits. An alternative to glue boards that may not hold up as well in damp or humid areas like basements or bathrooms. When deployed under normal conditions our long-lasting traps are effective for up to one full year. Our adhesive formula has been specially designed to prevent hardening that can limit effectiveness.

424XL - 2 Pack - J-Hook

Packs per case: 12 | Pack Dimensions: 10.25" x 10.875" x 0.625"

Case Dimensions: 10.37" x 11.25" x 8.37" | Ti/Hi: 12/8

Cases per pallet: 96 | Case Weight: 12 lbs

UPC: 029049004244



Each Catchmaster® 424XL provides 81 square inches of rat trapping coverage. Ideal clean-out tool for use in attics or crawl spaces, or other undisturbed locations like underneath cabinets or appliances.

Each tray is effective for one full year when used under normal conditions.

1872 | 872 | 3672 | MOUSE & INSECT

Made with the best adhesive formula available. Pre-baited to attract mice and insects – no additional baits are necessary. Effectively controls rodents and other crawling pests indoors in a clean, economical, and easy to use product. When deployed under normal conditions our long-lasting traps are effective for up to one full year. Our adhesive formula has been specially designed to prevent hardening that can limit effectiveness.

1872SD - 4 Pack - J-Hook / Shelf Display

1872SD-French - 4 Pack

Packs per case: 18 | Pack Dimensions: 5.25" x 11" x 0.125"

Case Dimensions: 5.5" x 5.5" x 9.875" | Ti/Hi: 56/5

Cases per pallet: 280 | Case Weight: 4.5 lbs

UPC: 029049018722



3672SD - 2 Pack - J-Hook / Shelf Display

Packs per case: 36 | Pack Dimensions: 5.25" x 11.125" x 0.625"

Case Dimensions: 6.0625" x 5.625" x 10.375" | Ti/Hi: 56/5

Cases per pallet: 280 | Case Weight: 4.5 lbs

UPC: 029049036726



872SD - 12 Pack - J-Hook / Shelf Display

Packs per case: 8 | Pack Dimensions: 5.25" x 11.5" x 0.625"

Case Dimensions: 5.25" x 11" x 5.5" | Ti/Hi: 56/5

Cases per pallet: 280 | Case Weight: 6 lbs

UPC: 0290490008723



30R | RAT PROFESSIONAL STRENGTH • HEAVY DUTY

Professional Strength Rat Size Glue Boards are made with the best adhesive formula available. Pre-baited to attract rodents. Perforated fold on both sides allows use with dust cover. When deployed under normal conditions our long-lasting traps are effective for up to one full year. Our adhesive formula has been specially designed to prevent hardening that can limit effectiveness.

RAT SIZE GLUE BOARDS**30R - 30 Pack - Shipper Display**

Packs per case: 30 | Case Dimensions: 12.25" x 4" x 6.25"

Ti/Hi: 21/12 | Cases per pallet: 252 | Case Weight: 7 lbs

UPC: 029049300001

**60M | MOUSE & INSECT**

Professional Strength Mouse Size Glue Boards are made with the best adhesive formula available. Pre-baited to attract mice and insects. Perforated to tear off and place glue directly against baseboards to secure traps and prevent drag offs. When deployed under normal conditions our long-lasting traps are effective for up to one full year. Our adhesive formula has been specially designed to prevent hardening that can limit effectiveness.

MOUSE AND INSECT GLUE BOARDS**60M - 60 Pack - Shipper Display**

Packs per case: 60 | Case Dimensions: 6" x 4" x 6.25"

Ti/Hi: 21/12 | Cases per pallet: 252 | Case Weight: 7 lbs

UPC: 029049300001

**75M | MOUSE & INSECT**

Professional Strength Mouse & Insect Size Glue Traps are made with the best adhesive formula available. Smaller and more economical than the standard size mouse glue board. Pre-baited to attract mice and insects. When deployed under normal conditions our long-lasting traps are effective for up to one full year. Our adhesive formula has been specially designed to prevent hardening that can limit effectiveness.

ECONO MOUSE AND INSECT GLUE BOARDS**18-72SD - 4 Pack - J-Hook / Shipper Display**

Packs per case: 30 | Case Dimensions: 12.25" x 4" x 6.25"

Ti/Hi: 21/12 | Cases per pallet: 252 | Case Weight: 7 lbs

UPC: 029049300001



490 | MOUSE MULTI-PACK

The Catchmaster Mouse Multi-Pack provides in a single purchase what you need to eliminate mice and other invading pests in various locations in your home or office. This convenient kit provides you with two standard, reusable wooden snap traps; two professional-grade glue trays designed to be used in damp or moist locations; and four standard glue boards that provide 24/7 protection from rodents and crawling pests such as spiders, roaches, centipedes and others.

490 - 2 Pack

Packs per case: 12 | Pack Dimensions: 2 1/8" x 6 1/4" x 9 5/8"
 Case Dimensions: 12 1/2" x 13 1/4" x 10 9/16" | Ti/Hi: 9/5
 Cases per pallet: 45 | Case Weight: 8.5 lbs
 UPC: 029049004909



4 Glue Boards | 1872
 4 Glue Trays | 102
 2 Wooden Snap Traps | 602

690 | RAT MULTI-PACK

The Catchmaster Rat Multi-Pack provides in a single purchase what you need to eliminate rats and other invading pests in various locations in your home or office. This convenient kit provides you with two Quick-Set reusable snap traps that allow you to remove captured animals without ever touching them; two professional-grade glue trays designed to be used in damp or moist locations; and four standard glue boards that provide 24/7 protection from rodents and crawling pests such as spiders, roaches, centipedes and others.

690 - 2 Pack

Packs per case: 6 | Pack Dimensions: 4 15/16" x 7" x 12 11/16"
 Case Dimensions: 10.37" x 11.25" x 8.37" | Ti/Hi: 12/8
 Cases per pallet: 96 | Case Weight: 12 lbs
 UPC: 029049004244



4 Glue Boards | 30R
 2 Glue Trays | 402
 2 Quick Snap Traps | 621R

606MC | 606MCV | 613MCMS | MOUSE TRAP - MULTI-CATCH™

Multi-Catch™ Mouse Trap will effectively eliminate mice. Designed for maximum reliability and ease-of-use. Traps 10-12 mice per setting and can be used with or without the glue board. Trap is a Live Catch if used without the glue board. When deployed under normal conditions our long-lasting traps are effective for up to one full year. Our adhesive formula has been specially designed to prevent hardening that can limit effectiveness.

606MC - 1 Pack - Shelf Display

Packs per case: 6 | Pack Dimensions: 10.5" x 6.1875" x 1.75"
 Case Dimensions: 13" x 7.25" x 11.875" | Ti/Hi: 12/9
 Cases per pallet: 108 | Case Weight: 7 lbs
 UPC: 029049006064



613MCMS - 1 Pack - Shelf Display

Packs per case: 6 | Pack Dimensions: 6.1875" x 10.5" x 2"
 Case Dimensions: 7.25" x 11.875" x 13" | Ti/Hi: 21/5
 Cases per pallet: 105 | Case Weight: 7 lbs
 UPC: 029049006064



606MCV-5 - 1 Pack - Shelf Display

Packs per case: 5 | Pack Dimensions: 6.375" x 10.5" x 2"
 Case Dimensions: 10.625" x 11.125" x 6.875" | Ti/Hi:
 Cases per pallet: 100 | Case Weight: 7.3 lbs
 UPC: 029049006064



606MC Trap uses the
 60M Glueboard

PREDATOR™

MOUSE TRAP AND ATTRACTANT



607R | PREDATOR™

Did you know mice can chew through wood, concrete and even metal? Mice are tough – trapping doesn't need to be! The trap has heavy-hitting spring action and a metal hook for increased durability. The Predator™ is the tough trap that makes trapping a snap!

607R - 1 Pack - Shelf Display

Packs per case: 24- 2 | Pack Dimensions: 2 1/4" x 3 7/8" x 5 7/8"

Case Dimensions: 14" x 5 3/8" x 8 5/8" | Ti/Hi: 7/14

Cases per pallet: 98 | Case Weight: 6.55 lbs

UPC: 029049060776

**READY
TO USE!**

602RE | 604 | 610 | MOUSE & RAT

Mouse Snap Traps and Rat Snap Traps with the easy-to-use expanded trigger makes setting and catching a 'snap'. Features the easy to set and lock cheese shaped trigger. This classic snap trap provides a fast kill with instant trigger response.

602RE - 18 Expanded Trigger 2 Pack**J-Hook / Shelf Display****602RE - 18F - French / English Packaging**

Packs per case: 18-2 | Pack Dimensions: 4.75" x 6" x 0.5"

Case Dimensions: 12" x 4.3125" x 4.5" | Ti/Hi: 26/11

Cases per pallet: 286 | Case Weight: 2.5 lbs

UPC: 029049006025

**610 CLASSIC TRIGGER - 1 Pack****J-Hook / Shelf Display****610- French / English Packaging**

Packs per case: 18-2 | Pack Dimensions: 4.75" x 6" x 0.5"

Case Dimensions: 12" x 4.3125" x 4.5" | Ti/Hi: 26/11

Cases per pallet: 286 | Case Weight: 2.5 lbs

UPC: 029049006025

**604 - 12 Expanded Trigger 4 Pack****J-Hook / Shelf Display****604RE - 12F - French / English Packaging**

Packs per case: 12-4 | Pack Dimensions: 4.75" x 6" x 1.25"

Case Dimensions: 15" x 4.3125" x 4.5" | Ti/Hi: 22/11

Cases per pallet: 242 | Case Weight: 4 lbs

UPC: 029049006040

**605R | 621 | MOUSE & RAT - SNAPPER™**

Quick Set Mouse Traps are the quickest and easiest-to-use snap traps available. Simply push back on lever to lock into the set position and place traps with trigger side against walls. These traps feature gripping teeth for extra holding power and an easy to access bait receptacle. The Snapper™ was designed with specific trigger sensitivity for a fast and effective 'snap'. Never place fingers near the trigger when trap is in the set position.

605R - 2 Pack - J-HOOK

Packs per case: 12-2 | Pack Dimensions: 5" x 7" x 2.5"

Case Dimensions: 10.5" x 9.5" x 8" | Ti/Hi: 16/8

Cases per pallet: 128 | Case Weight: 5.5 lbs

UPC: 029049006057

**621R - 1 Pack - J-HOOK**

Packs per case: 8 | Pack Dimensions: 4.25" x 8.5" x 3"

Case Dimensions: 8.5" x 9.25" x 8.5" | Ti/Hi: 20/6

Cases per pallet: 120 | Case Weight: 4 lbs

UPC: 029049006217

**615R | 12-10 | MULTI-CATCH MOUSE TRAP-SLIM™**

Ideal for hard-to-reach areas in your home. Use the Slim™ with the glue boards included to trap multiple mice, or use without glue boards as a live-catch trap. When using with glue boards, the adhesive captures the mice so they can be easily disposed. The Slim's™ dark color and inconspicuous design allows for discreet placement. The narrow profile of the trap fits into areas that most traps do not; between and behind appliances, along baseboards, under sinks and inside cabinets, between filing cabinets, underneath and around storage areas. When deployed under normal conditions our long-lasting traps are effective for up to one full year. Our adhesive formula has been specially designed to prevent hardening that can limit effectiveness.

615R - 1 Pack - Shipper Display

Packs per case: 9 | Pack Dimensions: 3" x 16.25" x 2.5"

Case Dimensions: 9.5" x 16.75" x 7.5" | Ti/Hi: 24/4

Cases per pallet: 96 | Case Weight: 7 lbs

UPC: 029049006156

**REFILL GLUE BOARDS****12-10 - 10 Pack - J-Hook / Shipping Display**

Packs per case: 12 | Pack Dimensions: 4" x 13" x 0.25"

Case Dimensions: 4.25" x 10.5" x 3.5" | Ti/Hi: 43/12

Cases per pallet: 516 | Case Weight: 2.5 lbs

UPC: 029049121071

**MADE IN USA**

FLY



913 | FRUIT FLY TRAP

An all-natural trap, the Catchmaster Fruit Fly Trap is completely safe for use around food. The disposable trap is designed for use in kitchens, on counters and near fruit bowls, to attract fruit flies and trap them inside. The unique clear plastic bottom makes for easy view of trapped fruit flies.

913 French - 1 Pack - J-Hook

Packs per case: 8 | Pack Dimensions: 3.5" x 5.5" x 2.25"

Case Dimensions: 5.25" x 7.75" x 7" | Ti/Hi: 45/8

Cases per pallet: 360 | Case Weight: 2.5 lbs

UPC: 029049009133



904 | WINDOW FLY TRAP

Once flies get indoors, they usually head straight for the bright light of a window thinking this is a way back outside. Catchmaster Window Fly Traps are designed to be placed directly on windows to capture flies and other flying insects that tend to gather there. The Window Fly Trap is coated with specially-formulated adhesive to catch flies. The trap features a thin, adhesive strip on back that is easy to apply and remove directly from windows. Trap flies where they hang out most!

904 - 4 Pack - Shelf Display

Packs per case: 24 | Pack Dimensions: 3.75" x 9.8125" x 0.625"

Case Dimensions: 4.31" x 10.62" x 4.125" | Ti/Hi: 100/5

Cases per pallet: 500 | Case Weight: 1.5 lbs

UPC: 029049009041



9144 | SCENTED FLY RIBBON

Specially formulated and lightly scented, these bug and fly catchers are for household and farm use. Simply unroll and hang to control flying insects. The Catchmaster adhesive attracts flying insects to the ribbon where they are caught. Thumbtack is included for hanging.

9144B4 - 384B Pack - Shelf Display

Packs per case: 384 | Case Dimensions: 5.25" x 4" x 11.25"

Ti/Hi: 10/11 | Cases per pallet: 110 | Case Weight: 11 lbs

UPC: 029049191449

9144M4 - 4 Pack - J-Hook / Shelf Display

Packs per case: 96 | Pack Dimensions: 4.562" x 4.25" x 1"

Case Dimensions: 15.625" x 4.875" x 12.625" | Ti/Hi: 9/8

Cases per pallet: 72 | Case Weight: 11.5 lbs

UPC: 029049091442



612R | 912R6 | 912R4 | 963 | GOLD STICK™

Gold Stick™ Fly Trap is perfect for those who prefer inconspicuous fly control. Use in homes, garages, offices, kitchens, laboratories, stables, barns and inside garbage cans or containers. Multi-Bait Attractant is designed to attract multiple fly species.

912R - 1 Pack - Shelf Display with Multi-Bait Attractant

Packs per case: 12 | Pack Dimensions: 2.75" x 10.5" x 2.75"
Case Dimensions: 11.875" x 11.25" x 9.125" | Ti/Hi: 12/8
Cases per pallet: 96 | Case Weight: 2.5 lbs
UPC: 029049009126



912R4-1 - 1 Pack - Shelf Display with Multi-Bait Attractant

Packs per case: 6 | Pack Dimensions: 4.375" x 10.5" x 4.375"
Case Dimensions: 11.875" x 11.25" x 9.125" | Ti/Hi: 12/8
Cases per pallet: 96 | Case Weight: 2.5 lbs
UPC: 029049009126



912R6 - 1 Pack - Shelf Display with Multi-Bait Attractant

Packs per case: 6 | Pack Dimensions: 2.75" x 10.5" x 2.75"
Case Dimensions: 3" x 11.25" x 17.5" | Ti/Hi: 28/6
Cases per pallet: 168 | Case Weight: 1.25 lbs
UPC: 029049009126



963-12 - 1 Pack - Shelf Display

Packs per case: 12 | Pack Dimensions: 2.75" x 24.25" x 2.75"
Case Dimensions: 11.875" x 24.875" x 8.875" | Ti/Hi: 16/3
Cases per pallet: 48 | Case Weight: 4.25 lbs
UPC: 029049009638



974-J | 974-ATT | FLY JAR & FLY JAR ATTRACTANT

The reusable Fly Jar is easy to use – just add water and the included fly attractant. Specially-formulated lure is designed to attract a broad range of fly species and is long-lasting. Catch thousands of flies!

974-J - 1 Pack

Packs per case: 6 | Pack Dimensions: 4.125" x 7" x 4.125"
Case Dimensions: 12.75" x 7.062" x 8.68" | Ti/Hi: 14/8
Cases per pallet: 112 | Case Weight: 3 lbs
UPC: 029049097451



974-ATT - 1 Pack

Packs per case: 24 | Pack Dimensions: 0.375" x 4.125" x 3"
Case Dimensions: 9.25" x 5.125" x 3.625" | Ti/Hi: 50/10
Cases per pallet: 500 | Case Weight: 2 lbs
UPC: 029049097420



908 | 922 | FLYING INSECT - GloStick™

Is designed to attract mosquitoes, flies and other common flying pests on a disposable glue tube using battery powered LED light. Includes 2 Disposable Glue Tubes and 1 Reusable Base (batteries not included).

908 - 1 Pack - 1 Refill Tube - Shelf Display 908F - 1 Pack - French / English Packaging

Packs per case: 6 | Pack Dimensions: 6" x 10.25" x 3"
Case Dimensions: 6.8125" x 10.75" x 19.125" | Ti/Hi: 14/6
Cases per pallet: 84 | Case Weight: 2.5 lbs
UPC: 029049009089



Designed for use in low light areas such as under bars and counters or in hard to access areas like attics or crawl spaces, GloStick™ delivers **200+ hours of performance** on a single set of batteries.

908FD - Floor Display See page xx
908F-FD - Floor Display See page xx

930 | FLY GLUE TRAP - SPIDER WEB™

This double-sided fly trap is designed to tackle the most severe fly infestations. At 46 square feet of catching power, the Spider Web™ Fly Glue Trap catches hundreds of thousands of flies and other flying insects. The Spider Web™ combines a pre-baited glue formula with a highly attractive fluorescent chartreuse color. The double-sided roll easily unrolls to be hung vertically or horizontally for use in barns, greenhouses, chicken, sheep, hog, enclosures, garbage rooms or wherever flies are present in large numbers.

930 - 1 Pack - Shelf Display

Packs per case: 12 | Pack Dimensions: 3" x 14.125" x 3"
Case Dimensions: 12.875" x 10" x 15.125" | Ti/Hi: 16/4
Cases per pallet: 64 | Case Weight: 15 lbs
UPC: 029049009300



931 | GIANT FLY TRAP

For use in Barns, Waste Rooms, Animal Farms and other high fly infestation areas, the Catchmaster Giant Fly Trap is a one-sided adhesive 30 ft. roll. Features pre-baited sent and chartreuse green color that is attractive to flies.

931 - 1 Pack - Shelf Display

Packs per case: 12 | Pack Dimensions: 2.375" x 2.375" x 10.0625"
Case Dimensions: 14.25" x 11" x 5" | Ti/Hi: 10/10
Cases per pallet: 100 | Case Weight: 12 lbs
UPC: 029049009317



**3,600 SQ.IN. OF FLY
CATCHING SURFACE**

975 | BAITED FLY BAG

The Disposable Fly Bag Trap is easy to use – just add water to the included fly attractant. A specially formulated lure is designed to attract a broad range of fly species and is long-lasting. Catch hundreds of flies!

975-126F - 1 Pack - Shelf Display

Packs per case: 12 | Pack Dimensions: 7.75" x 12" x 3.875"
Case Dimensions: 9.625" x 12.5" x 9.6874" | Ti/Hi: 20/5
Cases per pallet: 100 | Case Weight: 2.5 lbs
UPC: 029049009751



975-75 - 75 Pack - Bulk

Packs per case: 75 | Pack Dimensions: 7.75" x 12" x 3.875"
Case Dimensions: 19.5" x 15.5" x 15.5" | Ti/Hi: 6/4
Cases per pallet: 24 | Case Weight: 15 lbs
UPC: 029049009751



944 | FLYING INSECT LIGHT TRAP - LUMA™

Is designed to attract mosquitoes, flies and other common flying pests on a disposable glue tube using battery powered LED light. Includes 2 Disposable Glue Tubes and 1 Reusable Base (batteries not included).

944 - 1 Pack

944F - French/English Packaging

Packs per case: 6 | Pack Dimensions: 5.9375" x 8.75" x 3.125"

Case Dimensions: 10.25" x 9.25" x 12.25" | Ti/Hi: 12/6

Cases per pallet: 72 | Case Weight: 3.5 lbs

UPC: 029049009447



945 - 2 Pack

945F - French/English Packaging

Packs per case: 12 | Pack Dimensions: 0.125" x 4.25" x 3.625"

Case Dimensions: 5" x 8.37" x 3.625" | Ti/Hi: 84/6

Cases per pallet: 504 | Case Weight: 1.2 lbs

UPC: 029049009447



Luma's modern design and alluring glow, **quietly captures common flying pests with the unit**, eliminating the annoying buzz and unhygienic mess you get with typical zappers.

CRAWLING INSECT



812 | 813SD | PANTRY PEST GLUE TRAPS™

Eliminate moth infestations in food storage areas such as pantries or storage areas for pet food or birdseed with Pantry Pest Traps. Adhesive trap targets common flour and grain moths by utilizing a professional strength lure. Targets Indian Meal, Mediterranean Flour, Raisin and Tobacco Moths common to areas where cereal, pasta, dry pet food, grain and grain based products, dried fruit, chocolate, nuts and spices are stored.

812SD - 2 Pack - J-Hook / Shelf Display

Packs per case: 12 | Pack Dimensions: 5.3125" x 11" x 0.625"
 Case Dimensions: 4.25" x 9.625" x 5.5" | Ti/Hi: 72/6
 Cases per pallet: 432 | Case Weight: 1.5 lbs
 UPC: 029049008129



813SD - 4 Pack - J-Hook / Shelf Display

Packs per case: 12 | Pack Dimensions: 5.3125" x 11.375" x 0.8125"
 Case Dimensions: 10.875" x 5.75" x 12.125" | Ti/Hi: 12/10
 Cases per pallet: 120 | Case Weight: 3 lbs
 UPC: 029049008136



814 | CLOTHES MOTH

Eliminate clothes moth infestations in textile storage areas such as closets, dressers, attics, or wherever you need to prevent moths from feeding on natural fibers like wool and silk. Each Catchmaster® Clothes Moth Trap includes a **highly-effective odorless pheromone** attractant. Use these traps to control infestations, or to detect new moth activity.

814SD - 2 Pack - J-Hook / Shelf Display

Packs per case: 12 | Pack Dimensions: 5.3125" x 11" x 0.625"
 Case Dimensions: 4.25" x 9.625" x 5.5" | Ti/Hi: 10/10
 Cases per pallet: 432 | Case Weight: 3 lbs
 UPC: 029049108140



724 | CRAWLING PEST & INSECT GLUE TRAPS

Eliminate the creepy crawlers in your home with Catchmaster® Crawling Pest & Insect Traps. These glue boards contain a specially-formulated scent to attract insects.

724 - 4 Pack - J-Hook / Shelf Display

Packs per case: 24 | Pack Dimensions: 3.5" x 9.25" x 0.125"
 Case Dimensions: 6.875" x 4.1125" x 8.25" | Ti/Hi: 63/7
 Cases per pallet: 441 | Case Weight: 3 lbs
 UPC: 029049007245



Eliminate the creepy crawlers in your home with Catchmaster® Crawling Pest & Insect Traps. These glue boards contain **specially formulated scent adhesive**. You may be surprised to discover which insects are living in your home.

725 | CRICKET XL™

Put a stop to the noise with our new Cricket XL™ giant cricket trap. With over 55 square inches of catching power it is the largest cricket trap on the market. The trap can be separated along the perforated lines for dual placement. As with all our glue traps, Cricket XL™ is non-toxic, home and family safe, ready-to-use and lasts for up to a year under normal conditions. When the cricket racket is too much, put a stop to the noise with Catchmaster Cricket XL™ giant cricket trap.

725 - 1 Pack - Shelf Display

Packs per case: xx | Pack Dimensions: xx" x xx" x xx"

Case Dimensions: xx" x xx" x xx" | Ti/Hi: xx/xx

Cases per pallet: xx | Case Weight: xx lbs

UPC: 02904900xxxx



BONUS BIG ED TIP

The first signs of crickets in your home are usually dead crickets in cool, damp places. Placing 1 or 2 on a Cricket XL™ may help increase your catch rate.

YELLOW JACKET



JUST ADD WATER | NON-TOXIC REUSIBLE EFFECTIVE

Irresistible, long lasting attractant.



Catch thousands of yellow jackets, wasps, and hornets with the reusable Catchmaster Jacket Jar™. Simply add water, pour in the attractant, and place or hang outdoors where yellow jackets, wasps, or hornets are found. This non-toxic attractant is safe to use around children and pets. Reuse the jar next season with refill attractant 976-ATT.

976-J - Jacket Jar™

Packs per case: 6 | Pack Dimensions: 4" x 9.125" x 4"
Case Dimensions: 12.375" x 9.5" x 8.375" | Ti/Hi: 15/6
Cases per pallet: 90 | Case Weight: 3 lbs
UPC: 029049097659

976-ATT - 12-2 Pack - Shelf Display

Packs per case: 12 | Pack Dimensions: 0.375" x 4.125" x 3"
Case Dimensions: 19.5" x 15.5" x 15.5" | Ti/Hi: N/A
Cases per pallet: N/A | Case Weight: N/A
UPC: 029049009751



DEFIANT™

LIQUID ANT BAIT



730 | DEFIANT™ LIQUID ANT BAIT

Effective liquid ant bait station formulated to kill the Queen and the colony. Easy access X-large feeding point. Professional-strength ant bait. Use indoor & outdoors.

730-6 - 1 Pack

Packs per case: 6 | Pack Dimensions: 4" x 4 5/16" x 1 13/16"
Case Dimensions: 8 11/16" x 5 15/16" x 6 3/16" | Ti/Hi: 32/3
Cases per pallet: 96 | Case Weight: 2.30 lbs
UPC: 029049730068



**ULTIMATE LIQUID ANT
KILLER, KILLS THE QUEEN
AND THE COLONY**

730-12 - 1 Pack

Packs per case: 12 | Pack Dimensions: 4 1/8" x 5 5/16" x 3 3/16"
Case Dimensions: 13 3/16" x 11 1/14" x 6 1/2" | Ti/Hi: 11/6
Cases per pallet: 66 | Case Weight: 2.30 lbs
UPC: 029049730129



DISPOSABLE BAG

979-12 | YELLOW JACKET BAG

Yellow Jacket, Wasp & Hornet Bag is non-toxic and easy to use. Simply add water, pop the attractant pouch, and hang outdoors. Catch hundreds of yellow jackets, wasps, and hornets. When you're done, the lid seals shut for easy disposal.

979-12 - 1 Pack - J-Hook / Shelf Display

869 - 1 Pack - French / English Packaging
Packs per case: 12 | Pack Dimensions: 1" x 6.7" x 6.5"
Case Dimensions: 9.5" x 12.25" x 9.5" | Ti/Hi: 20/5
Cases per pallet: 100 | Case Weight: 3 lbs
UPC: 029049009799



The Catchmaster® Yellow Jacket, Wasp & Hornet Bag is **non-toxic** and **easy to use**. Simply add water, pop the attractant pouch, and hang outdoors. **Catch hundreds of yellow jackets, wasps and hornets.** When you're done, the lid seals shut for easy disposal.

DISPOSABLE BAG

869 | BEETLE BAG TRAP

Japanese Beetle Trap attractant consists of a dual sex lure and floral (food) lure system, which attracts two to five times more Japanese beetles than traps with only a single lure. The lures combine to draw male and female Japanese beetles into a trap... and away from valuable ornamentals, fruit trees, vegetables, flowers and shrubs.

869 - 1 Pack - J-Hook / Shelf Display

Packs per case: 12 | Pack Dimensions: 1" x 6.7" x 6.5"
Case Dimensions: 12.5" x 6.8" x 6.6" | Ti/Hi: 18/7
Cases per pallet: 126 | Case Weight: 4.75 lbs
UPC: 029049008693



869-RFL - 1 Pack - J-Hook / Shelf Display

Packs per case: 12 | Pack Dimensions: 1" x 6.7" x 6.5"
Case Dimensions: 12.5" x 6.8" x 6.6" | Ti/Hi: 20/8
Cases per pallet: 160 | Case Weight: 4 lbs
UPC: 029049008693



The Catchmaster® Japanese Beetle Trap attractant consists of a dual sex lure and floral (food) lure system, which **attracts two to five times more Japanese beetles than traps with only a single lure.** The lures combine to draw male and female Japanese beetles into a trap...and away from valuable ornamentals, fruit trees, vegetables, flowers and shrubs.

BG-1 | BULK GLUE

Bulk Glue contains a new and improved formula which allows the glue to be easily spread, yet it won't run in high temperatures nor lose its effectiveness in low temperatures. Bulk Glue is offered for those making their own traps in custom shapes and sizes.

930 - 1 Pack - Shelf Display

Packs per case: 4 | Pack Dimensions: 6.5" x 7.5" x 6.5"
 Case Dimensions: 16.25" x 8" x 16.25" | Ti/Hi: 21/5
 Cases per pallet: 105 | Case Weight: 33 lbs
 UPC: 029049008419



INSECT BARRIER

933 | TREE SHIELD™

The Tree Shield is a product designed for banding smaller ornamental plants where a large tree banding product may not be appropriate. Designed to act as a barrier for crawling insects. In a convenient smaller size pack.

933 - 1 Pack - Shelf Display

Packs per case: 12 | Pack Dimensions: 3 1/4" x 1 7/8" x 4"
 Case Dimensions: 12 3/4" x 7 1/4" x 5" | Ti/Hi: 18/10
 Cases per pallet: 180 | Case Weight: 2.46 lbs
 UPC: 029049009331



MADE IN USA

INSECT BARRIER

TB-DIY-6 | TREE-BANDING

Helps prevent and monitor invasive insect species & protect your trees. When combined with a standard wrapping material it creates a physical barrier. Works on the spotted lanternfly, cankerworms, spongy materials and other invasive insects. Specially-formulated weather resistant adhesive with UV inhibitor. Remains effective all season long. Non-toxic, safe to use around children & pets.

TB-DIY - 1 Pack - Shelf Display

Packs per case: 6 | Pack Dimensions: 4.625" x 4.625" x 2.75"
 Case Dimensions: 14" x 5.25" x 6" | Ti/Hi: 24/5
 Cases per pallet: 120 | Case Weight: 6.15 lbs
 UPC: 029049823463



COMING SOON | TB-HEAVY-6 | TREE - BANDING

Helps prevent and monitor invasive insect species & protect your trees. When combined with a standard wrapping material it creates a physical barrier. Works on the spotted lanternfly, cankerworms, spongy materials and other invasive insects. Specially-formulated weather resistant adhesive with UV inhibitor. Remains effective all season long. Non-toxic, safe to use around people, pets, and wildlife. Multiple tree.



DISPOSABLE BAG

OVI-MINI | OASIS™ MOSQUITO & FLYING INSECT TRAP

The Oasis™ Mosquito & Flying Insect Trap is an affordable and non-toxic mosquito trap. Design to allow multiple placements around your home and property. Works by capturing mosquito as they seek out breeding and resting sites.

OVI-MINI - 1 Pack

Packs per case: 4 | Pack Dimensions: 6" x 10" x 6"
 Case Dimensions: 7.2" x 12.7" x 14" | Ti/Hi: TBD
 Cases per pallet: TBD | Case Weight: 3.60 lbs
 UPC: 029049684644



LIGHT TRAP

986 | LUMA™ MOSQUITO & FLYING INSECT TRAP

Nothing can ruin an outdoor experience like mosquitoes. That is why we designed our Luma Mosquito & Flying Insect Trap. The unique design of our illuminated dome covers over a full acre (43,650+ square feet) to help reduce flying insect populations. The illuminated dome attracts flying insects while the silent & safe fan sucks them into a capture chamber where the insects are dehydrated. The quiet operation won't disturb your outdoor party like annoying zappers. The trap also features TiO2 titanium dioxide that produces carbon dioxide, known to attract mosquitoes. The 6 foot power cord gives you more placement options than comparable traps. Luma Mosquito & Flying Insect Trap can be used to protect outdoor areas like yards, patios, decks, playsets, gardens and pools. Use around homes, offices and schools – anywhere you encounter flying insects!

986 - 2 Pack

Packs per case: 4 | Pack Dimensions: 9" x 9" x 13.5"
 Case Dimensions: 19.625" x 18.625" x 14.25" | Ti/Hi: 4/4
 Cases per pallet: 64 | Case Weight: 16.2 lbs
 UPC: 40029049009865



Great for
**Porches,
 Backyards,
 Patios
 or Cabins**

WILDLIFE



699-18 | 699-24 | 699-32 | LIVE CAGE TRAPS

Humane solution for relocating unwanted animals. Integrated bait chamber – load without reaching into the trap. Weather-resistant anodized coating reduces glare and blends into environment

699-18 - 1 Pack

Packs per case: 4 | Pack Dimensions: 18.5" x 5.5" x 5.625"

Ti/Hi: 17/10 | Cases per pallet: 170 | Case Weight: 3 lbs

UPC: 029094699181

699-24 - 1 Pack

Packs per case: 2 | Pack Dimensions: 24.875" x 8.875" x 8"

Ti/Hi: 7/6 | Cases per pallet: 42 | Case Weight: 6 lbs

UPC: 029094699242

699-32 - 1 Pack

Packs per case: 1 | Pack Dimensions: 33" x 12.5" x 11.5"

Ti/Hi: 4/4 | Cases per pallet: 16 | Case Weight: 9 lbs

UPC: 029094699327



The Catchmaster® Cage Trap offer a **humane solution for relocating unwanted animals**. Select from 3-size options depending on the size of the animal you are targeting. This trap features an intergrated bait chamber you can load without reaching into the trap. The black weather-resistant anodized coating reduces glare and blends into the environment.

ORIGINAL FLY TRAP

660SVG | SAVAGE™ MOLE TRAP

Our Savage™ mole trap includes reinforced, positive-grip jaws designed for increased catching efficacy. The trap is easy-to-set to minimize the your time spent setting the trap. The trap has a heavy-duty design and weatherproof finish and requires no bait, making it an ideal, reusable trap.

660SVG - 1 Pack

Packs per case: 1 | Pack Dimensions: 7.625" x 11.625" x 5.5"

UPC: 029049036603

A mole problem can wreak havoc on any lawn. Left unchecked, moles will continue to excavate until your lawn is transformed into a construction site of holes and dirty mounds. Don't allow your lawn to become an unsightly wasteland reclaim your property with the Catchmaster® Savage™ mole trap. **Designed to eliminate moles** with forceful impact, each time it's deployed.



DEAD END™

High quality, economy pest solutions.

MOUSE GLUE TRAPS

MOUSE GLUE TRAP

1102 - 2 Pack - J-Hook

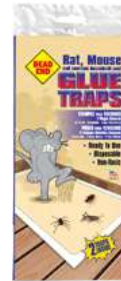
Packs per case: 24 | Pack Dimensions: 5.3125" x 5" x 0.8125"
 Case Dimensions: 10.50" x 5.5" x 11" | Ti/Hi: 32/5
 Cases per pallet: 160 | Case Weight: 2 lbs
 UPC: 029049011020



MOUSE GLUE TRAP

24-60 - 2 Pack - J-Hook-Shelf Display

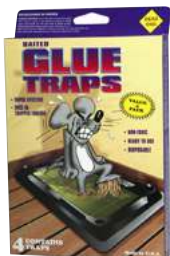
Packs per case: 24 | Pack Dimensions: 5.3125" x 14" x 0.125"
 Case Dimensions: 5.9375" x 5.25" x 13" | Ti/Hi: 54/4
 Cases per pallet: 216 | Case Weight: 2.5 lbs
 UPC: 029049024600



MOUSE GLUE TRAP

1104 - 4 Pack - J-Hook

Packs per case: 24 | Pack Dimensions: 5.3125" x 8.3125" x 0.8125"
 Case Dimensions: 11" x 8.875" x 11.25" | Ti/Hi: 18/5
 Cases per pallet: 90 | Case Weight: 3.5 lbs
 UPC: 029049011044



MOUSE GLUE TRAP

72-96 - Bulk - Shelf Display

Packs per case: 96 | Pack Dimensions: 5.25" x 8.5" x 0.03125"
 Case Dimensions: 6" x 9" x 6" | Ti/Hi: 42/6
 Cases per pallet: 252 | Case Weight: 5 lbs
 UPC: 029049072960



RAT GLUE TRAPS

RAT GLUE TRAP

1402 - 2 Pack - J-Hook

Packs per case: 12 | Pack Dimensions: 5.3125" x 11.4375" x 0.8125"
 Case Dimensions: 11.75" x 11" x 6.125" | Ti/Hi: 12/10
 Cases per pallet: 120 | Case Weight: 7 lbs
 UPC: 029049014021



RAT GLUE TRAP

48-72 - 4 Pack - J-Hook

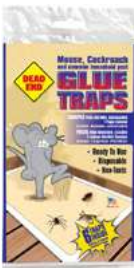
Packs per case: 48 | Pack Dimensions: 5.3125" x 8.3125" x 0.03125"
 Case Dimensions: 11" x 8.875" x 11.25" | Ti/Hi: 42/5
 Cases per pallet: 210 | Case Weight: 5 lbs
 UPC: 029049011044



RAT GLUE TRAP

24-72 - 6 Pack - J-Hook-Shelf Display

Packs per case: 24 | Pack Dimensions: 5.3125" x 11" x 0.125"
 Case Dimensions: 6.125" x 4.375" x 9.6875" | Ti/Hi: 63/5
 Cases per pallet: 315 | Case Weight: 4.5 lbs
 UPC: 029049024723



DISPLAYS

Our well designed and high quality packaging and displays will accommodate all of your merchandising needs. Effectively attract attention and easily showcase Catchmaster® products with floor displays, shelf displays, shipper displays, clipstrips, sidekicks and more.

UNIVERSAL RETAIL FLOOR DISPLAY - PEST CONTROL CENTER

CATCHMASTER® ITEMS COMPATIBLE WITH THE UNIVERSAL RETAIL FLOOR DISPLAY INCLUDE

CATCHMASTER® ITEMS #	104	1872	610	9144M4	UNIVERSAL RETAIL FLOOR DISPLAY Display Size: 7.5" x 38.75" x 14" Ti/Hi: 6/5 Cases per pallet: 30
	402	604	621R	912R	
	404	605R	705	904	

| Contact your sales representative for more product configuration possibilities |

9000FD - 1

COMPONANTE: i2of5

UPC: 10029049900338

9144M4 - Scented Fly Ribbon - 24/4 packs

904 - Window Fly Trap - 48/4 packs

912R - Gold Stick™ Fly Trap with Bait - 8 pcs

9000FD - 3

COMPONANTE: i2of5

UPC: 10029049903339

9144M4 - Scented Fly Ribbon - 24/4 packs

912R - Gold Stick™ Fly Trap with Bait - 8 pcs

9100FD - 1

COMPONANTE: i2of5

UPC: 10029049910337

1872SD - Mouse & Insect Glue Boards - 18/4 packs

104 - Mouse & Insect Glue Traps - 12/14 packs

402 - Rat, Mouse & Snake Glue Traps - 12/2 packs

9100FD - 2

COMPONANTE: i2of5

UPC: 10029049913321

604 - Mouse Traps - 18/4 packs (16 peggable)

610 - Rat Traps - 36/1 packs

9100FD - 3

COMPONANTE: i2of5

UPC: 10029049913338

1872SD - Mouse & Insect Glue Boards - 18/4 packs

104 - Mouse & Insect Glue Traps - 12/14 packs

404 - Rat, Mouse & Snake Glue Traps - 12/2 packs

9100FD - 5

COMPONANTE: i2of5

UPC: 10029049913352

602RE - Mouse Size Wood Traps - 36/2 packs

1872SD - Mouse & Insect Glue Boards - 18/4 packs

104 - Mouse & Insect Glue Traps - 12/14 packs

9100FD - 6

COMPONANTE: i2of5

UPC: 10029049913369

605 - Snapper™ Mouse Traps - 12/2 packs

621R - Snapper™ Rat Traps - 8/1 packs

9100FD - 7 (French)

COMPONANTE: i2of5

UPC: 10029049913376

102F - 24/2 packs | 3672 - 36/2 packs | 402F - 12/2 packs

9100FD - 8 (French)

COMPONANTE: i2of5

UPC: 10029049913383

602RE-18F - 36/2 packs | 604-12F - 24/4 packs | 610F - 12/1 packs



9100FD-3

FLOOR DISPLAYS

908FD - GLOstik™

Packs per case: 12
 Pack Dimensions: 6" x 10.25" x 3"
 Case Dimensions: 13.75" x 32.25" x 7.5"
 Ti/Hi: 6/5
 Cases per pallet: 30
 Case Weight: 7 lbs
 UPC: 029049009089
 i2of5 (ITF): 20029049009083

908F-FD - GLOstik™

French/English Packaging

i2of5 (ITF): 20029049009083

944FD-2 - LUMA® - Floor Display

Packs per case: 16 - 1 (944) | 12 - 2 (945F)
 Pack Dimensions: 5.9375" x 8.75" x 3.125"
 Case Dimensions: 10.25" x 9.25" x 12.25"
 Ti/Hi: 12/6
 Case Weight: 7 lbs
 UPC: 029049009448
 i2of5 (ITF): 30029049009448

913FD - French

i2of5 (ITF): 30029049009134
 913F - 36 Units

9000FD-5F - French

i2of5 (ITF): 10029049923351
 913F - 12 Units
 813SD-F - 24 Units

402FD - French

i2of5 (ITF): 30029049004023
 402 - 36 Units

9100FD-9

i2of5 (ITF): 10029049091001
 104 - 12 Units
 402 - 8 Units

944FD-2



908FD



402F



913FD



9000FD-5FD





CATCHMASTER®

catchmaster.com