



Colorado Brewing Systems

Fermentation / Cellar Control System

Please refer to the wiring diagrams for proper connection of the solenoids and temperature probes.

Note that all tanks or you main cooling loop must be protected from over pressure by a pressure relief valve.

1.) Main Screen



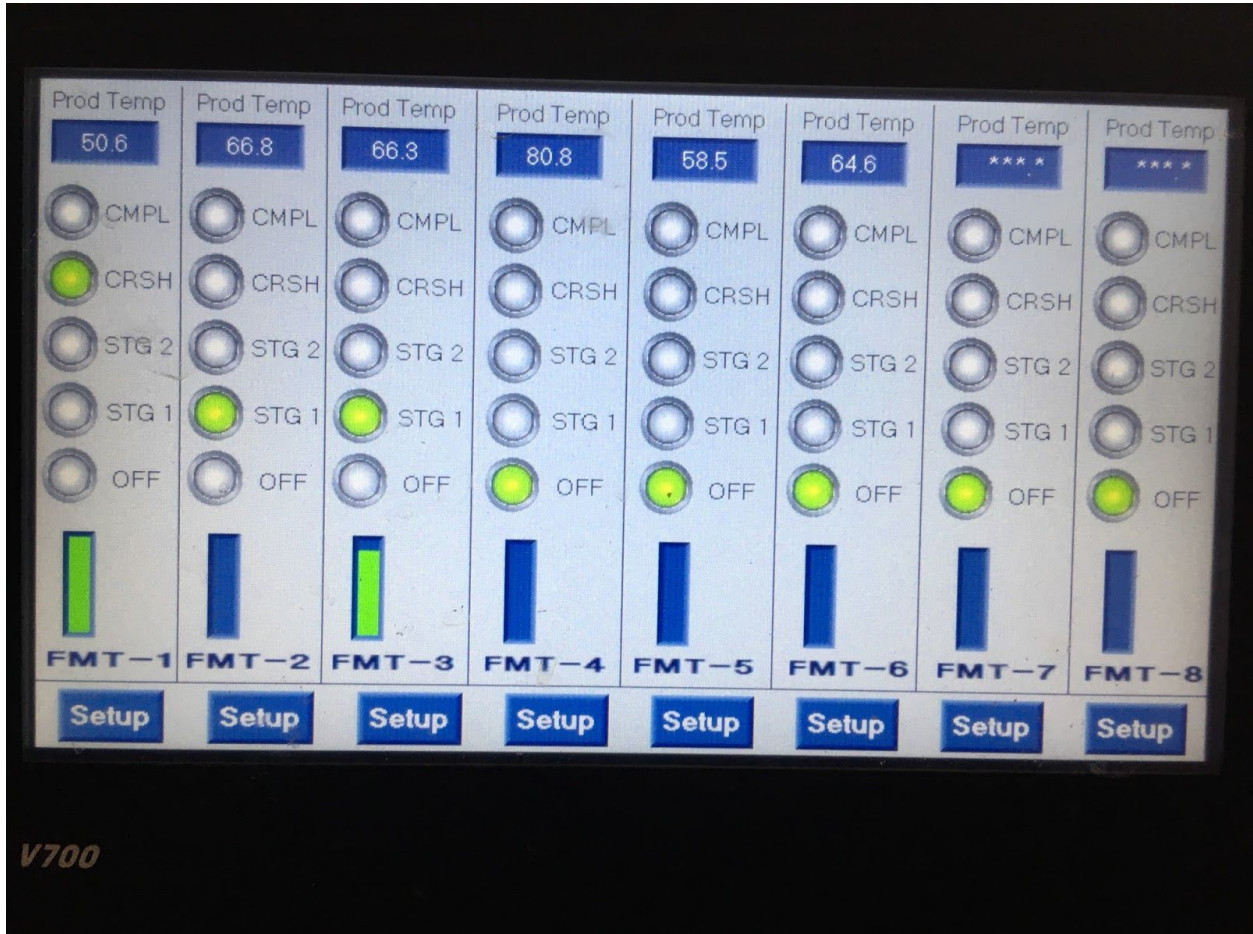
Initially go into your bypass Setup. The default password is 1234. Bypass valves can be set 1-3. If you only have one cooling loop make sure the bypass valves are all set to 1



Colorado Brewing Systems

Fermentation / Cellar Control System

Go to System Overview



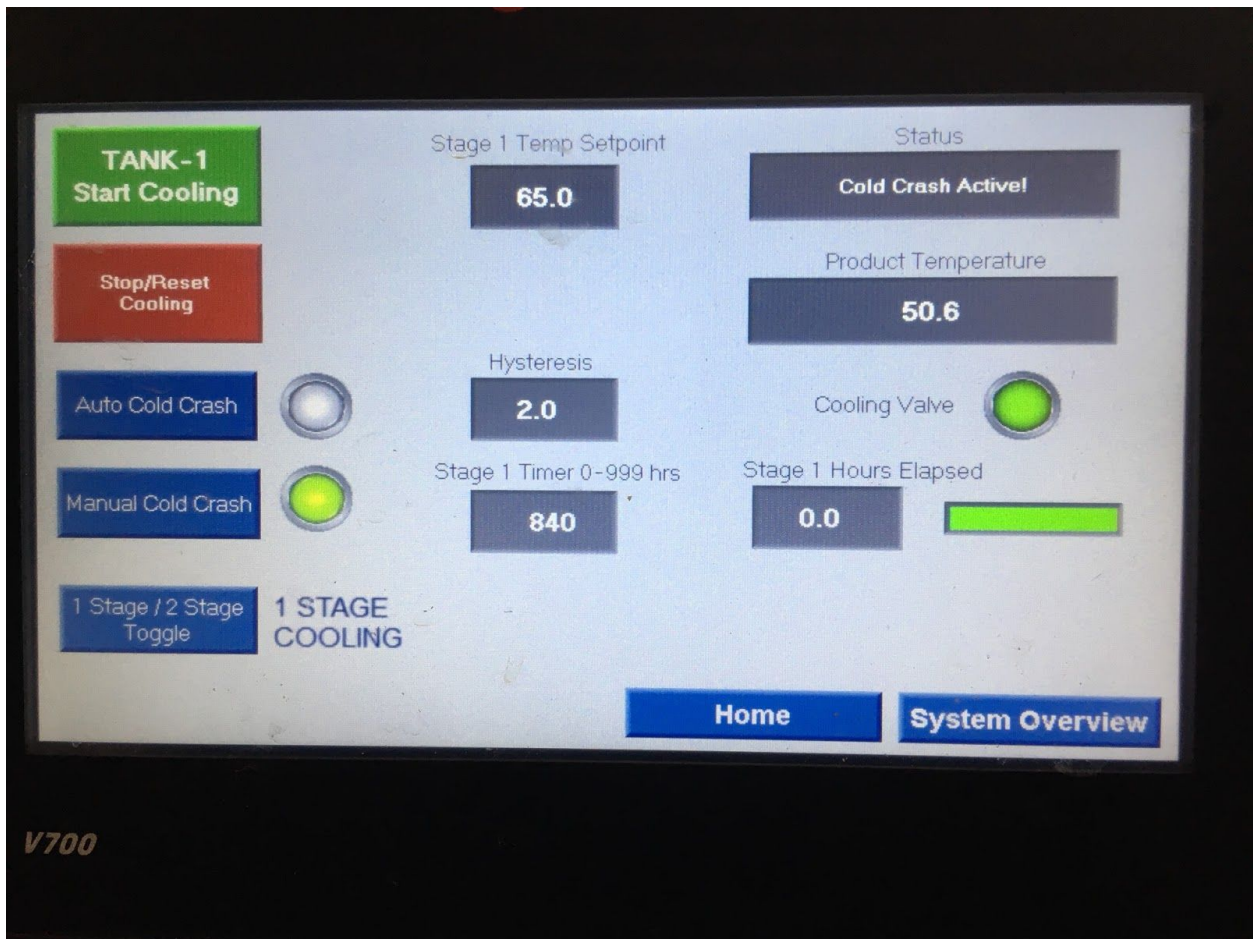
System overview will show you the status of all of your tanks including time remaining, cold crash, product temperature, solenoid status and cooling stage.



Colorado Brewing Systems

Fermentation / Cellar Control System

To setup an individual tank press the Setup button.



In the setup set your desired output temperature, choose single or 2 stage cooling and if an auto cold crash is desired at the end of the cycle.



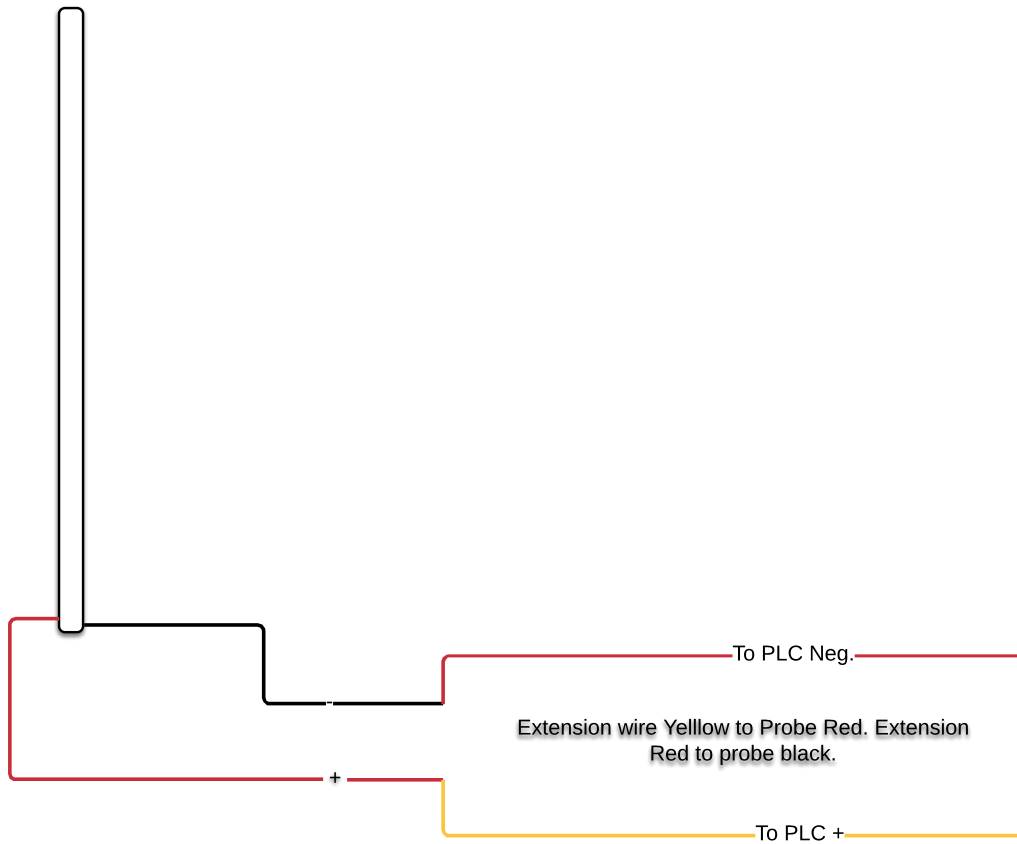
Colorado Brewing Systems

Fermentation / Cellar Control System

Set your Hysteresis (the dead band.) We recommend 2 for an initial setting. This number can never be set to 0

To start your cycle press the Start Cooling button.

Temp Probe Extension Wiring.



IMPORTANT
FERMENTERS AND BRITE TANKS
WITH GLYCOL JACKETS

Please note that your jacket pressure rating is 15PSI. Relief valves should be installed in your glycol line to activate and re-route the flow of glycol to the return loop in the event of overpressure.

Solenoid valves should be installed on the inlet side of your tank (the $\frac{3}{4}$ " pipe with the 90 degree bend) (glycol loop > manual shutoff valve > solenoid > Tank inlet). Observe solenoid flow direction.

If you have questions about the connection of tanks, email cobrewingsystems@gmail.com for support. Failure to follow these instructions can result in damage to the cooling jacket and tank.