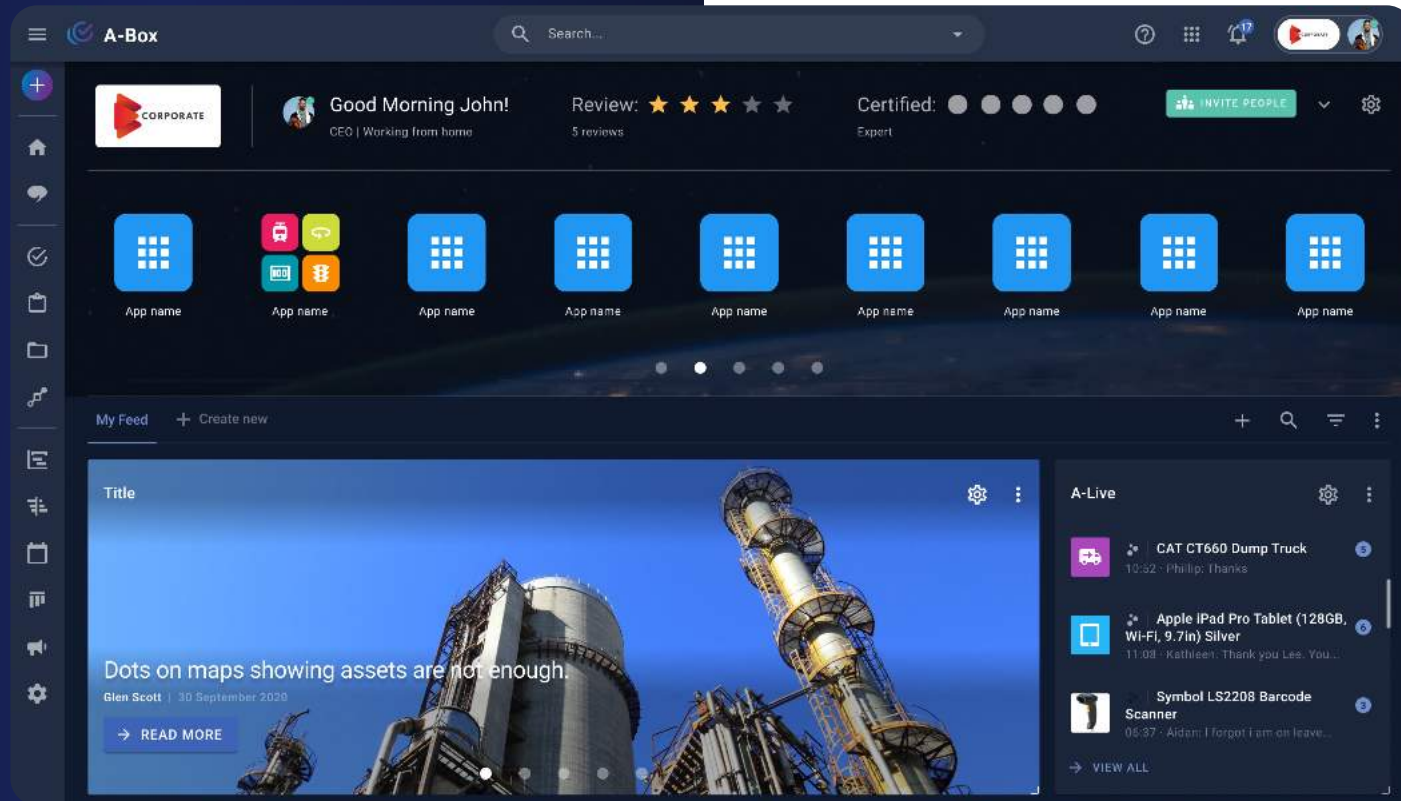




Own your data. **Orchestrate everything.**[®]

PROBLEM?

- ✓ Unmet Potential Of Big Data
- ✓ Unused Explosion Of IoT
- ✓ Imperative Of Digital Migration
- ✓ Low Collaboration
- ✓ Unrealized AI Potential



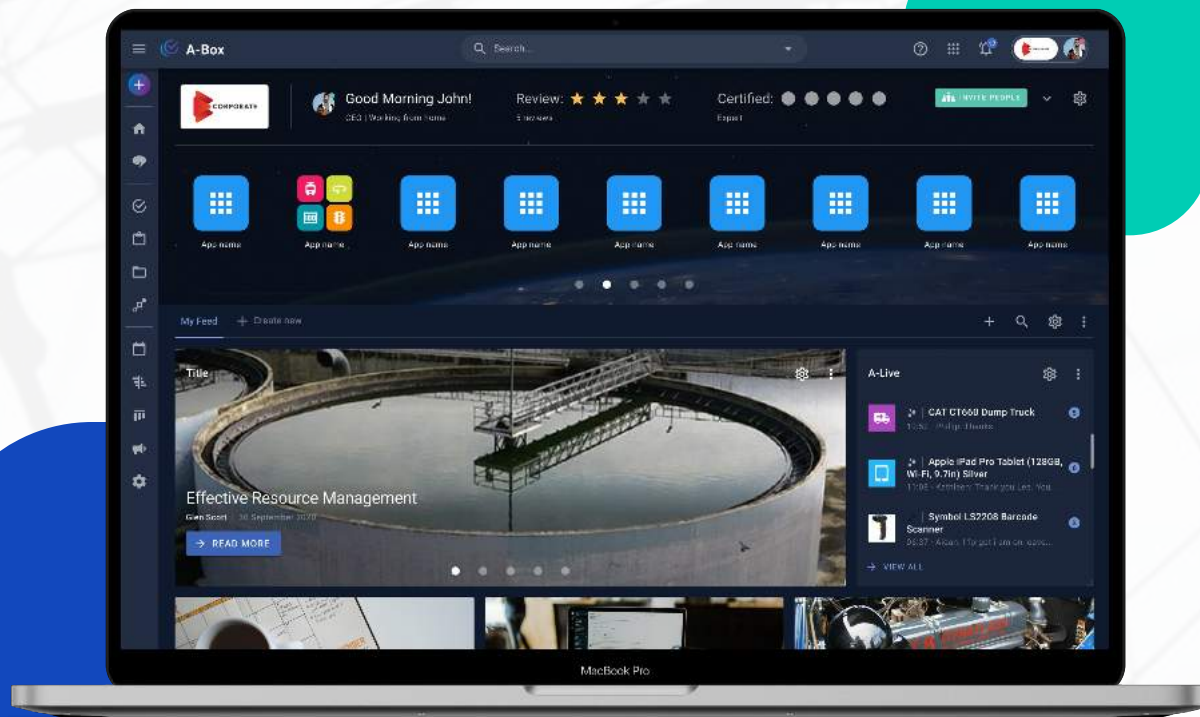
OVERVIEW

AFFECTLI

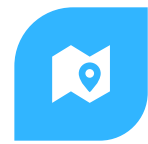
AFFECTLI is an incredibly powerful, versatile, intelligent and trusted Business Operating System toolbox that allows you to own your data, and orchestrate everything within an organisation.

This Digital Transformation solution is suitable for ANY organisation looking to improve risk management, increase innovation, and make meaningful data-driven decisions. With low churn and high customer stickiness, AFFECTLI has been successfully proven at scale geographically; as well as within a number of complex industries and challenging operational environments.

AFFECTLI is not a rip and replace solution. It is system and device agnostic, and has a unique combination of fully integrated features that enables businesses to orchestrate & harness the power of their data that generates efficiencies which result in a rapid Return On Investment.



AFFECTLI FEATURES



Maps + Situational Awareness



A-Box + A-Live

Orchestration & Contextual Collaboration



Designer

Apps & Custom Forms



Mi-Stream

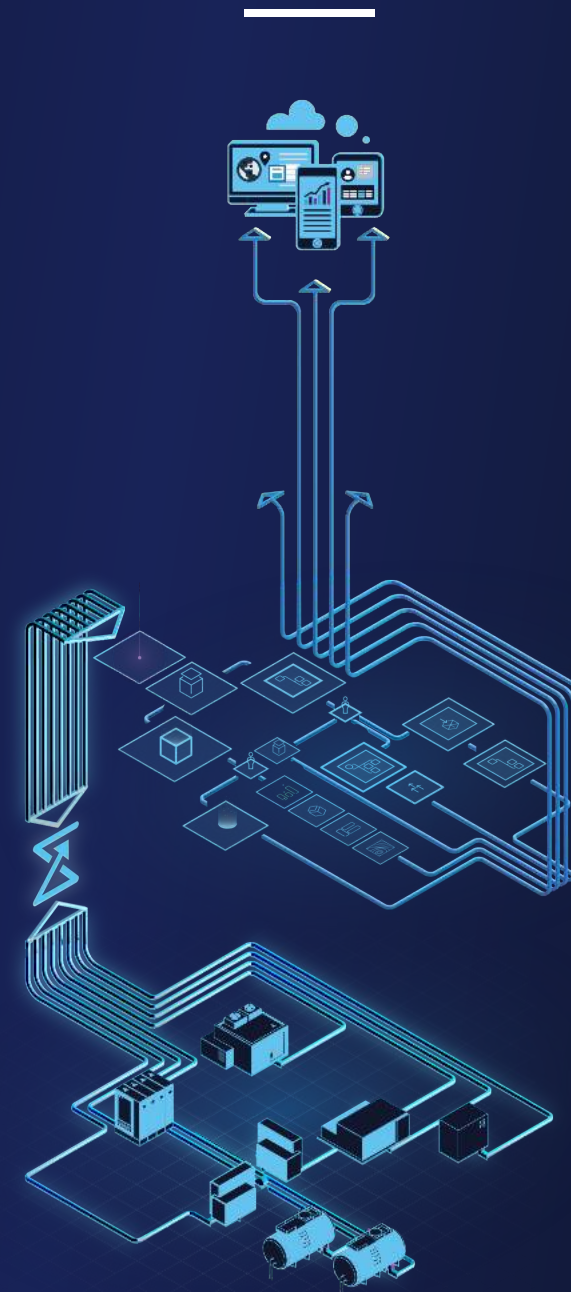
Endpoint Integration & Information Management



Devices & Data

Agents, Things, Devices, Gateways & Information

FUNCTIONALITY VS MARKET OFFERING



MARKET OFFERING

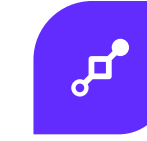


Big Data Analytics & Visualisation

Reports & Maps | Situational Awareness



Hyper Contextual Collaboration



Robotic Process Automation

Process Engine IBPMN



AI & Machine Learning

Integrations & Predictive Data



IoT Endpoints

Digital Devices & Data

* SOURCE: Garner, Statista & Globenewswire

DATA VISUALISATION

INSIGHTS

Graphing Dashboards
 Mapping Analytics
 Digital Twins

DATA INGESTION

BIG DATA

Data Lake / Data Pool Correlation

SITUATIONAL AWARENESS

MAPS

Semantic Relationships Heat Maps
 Pivot on any Data Point Custom Map Layers

HARDWARE AGNOSTIC

IOT

Support ALL known digital protocols & standards

INTELLIGENT WORKFLOW

ORCHESTRATION

Automated Process Management
 Real-time identification / Alerting
 Task Management

CHAT & BROADCAST

COMMUNICATION

Instant messaging & scheduled notifications

DATA IN MOTION AI

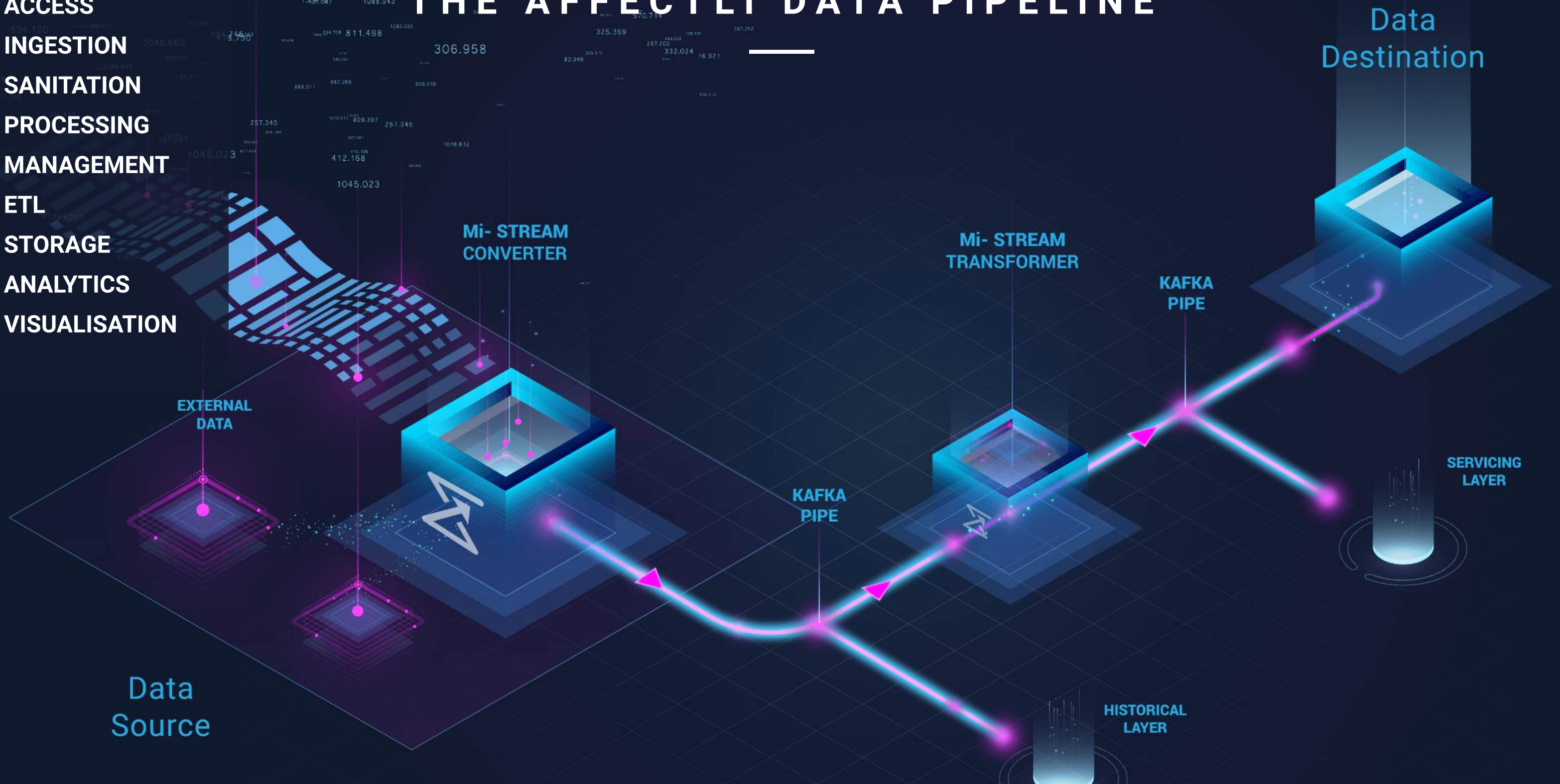
AI/M2M

Data at Rest AI
 AI Engine Agnostic
 AI Model Agnostic

CLIENTS BUSINESS

- DISCOVERY
- ACCESS
- INGESTION
- SANITATION
- PROCESSING
- MANAGEMENT
- ETL
- STORAGE
- ANALYTICS
- VISUALISATION

THE AFFECTLI DATA PIPELINE



CAPABILITIES

AFFECTLI's capabilities are limitless

- ✓ Proven Technology
- ✓ Organic growth
- ✓ Low Churn
- ✓ High Customer Stickness
- ✓ System & Device Agnostic

Customisable For

- ✓ ANY Industry
- ✓ ANY Organisation
- ✓ ANY Solution

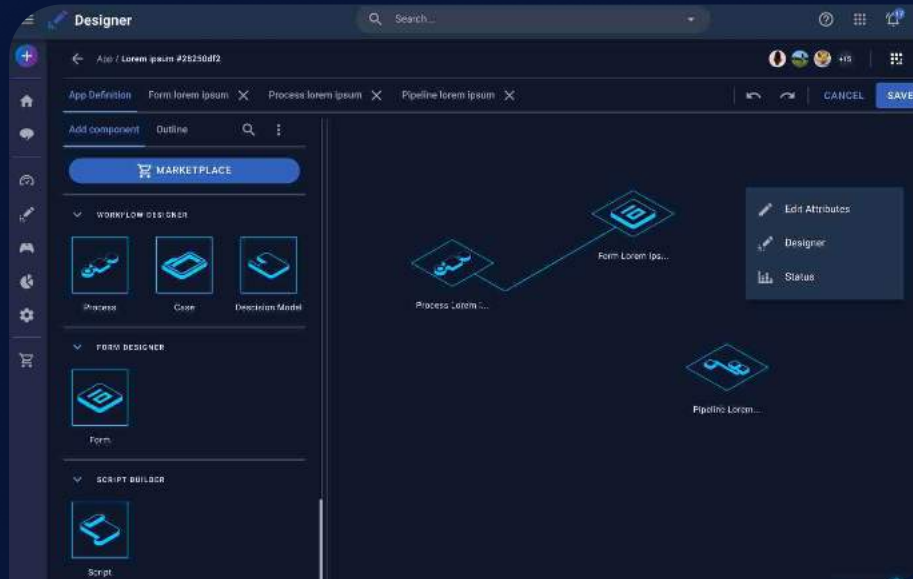
Delivers Efficiencies

- ✓ Operational
- ✓ Financial
- ✓ Accountability

Growth Potential

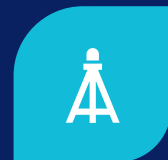
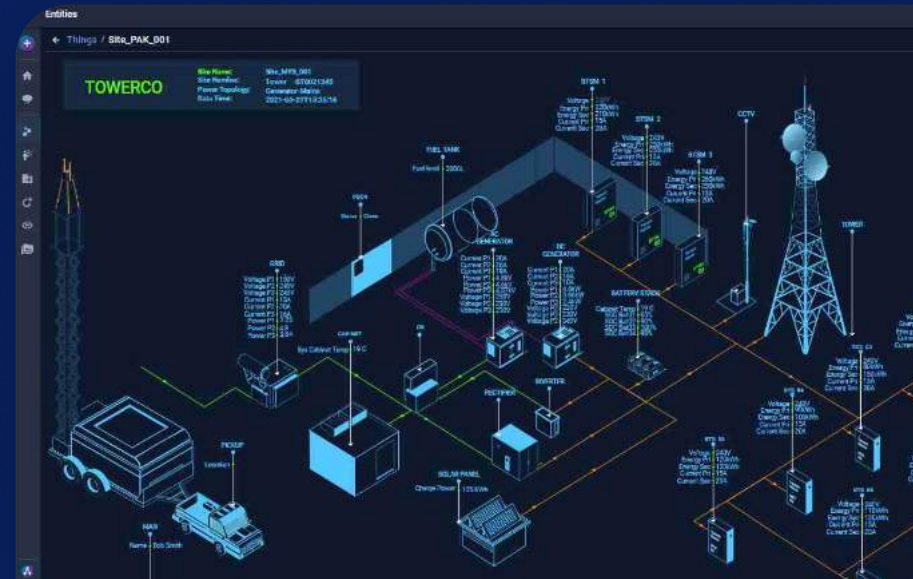
- ✓ Proven Scalability
- ✓ Proven Extensibility
- ✓ Multi - Tenancy

REPORT FORMATS & VIEWS



App Designer

iBPMN Business Process modelling that enables drag & drop functionality to digitise workflow processes that are immediately implemented within the organisation.



Digital Twins

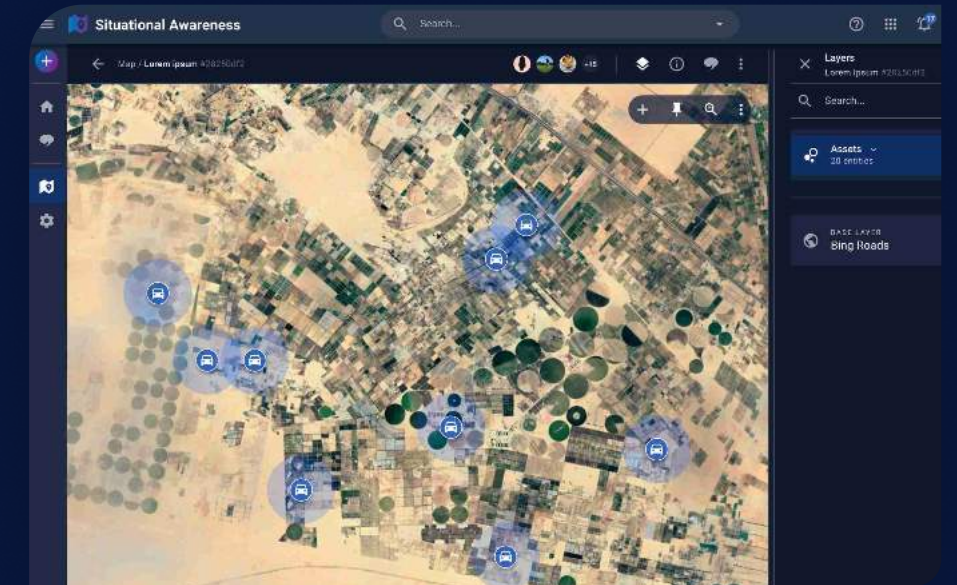
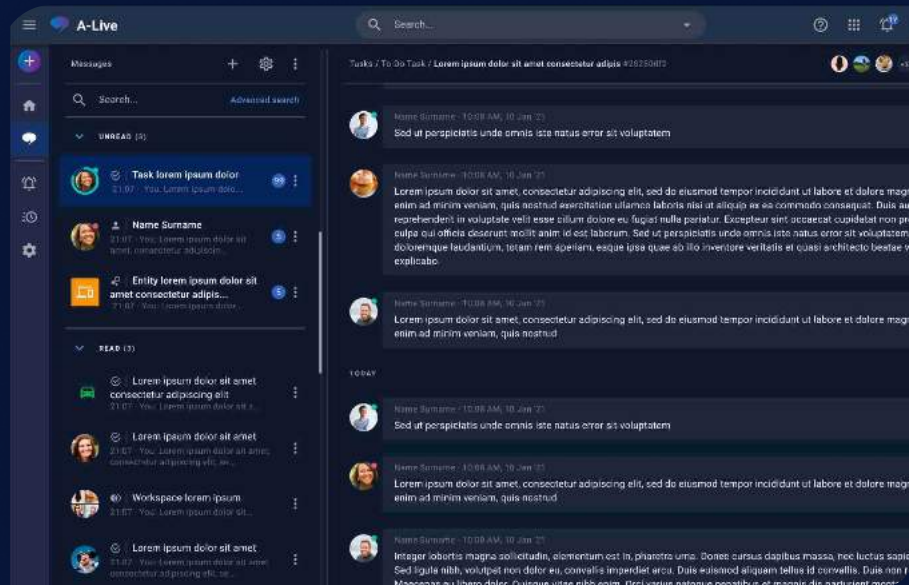
Digital Twins are built by applying semantic ontologies which provides a real time overview of an environment. With a simple click of a button, the viewer can drill down into granular detail.



Integration & Data Management

AFFECTLI's certifications and compliance, assures that the highest industry standards are applied, resulting in data being managed in a secure, controlled and audited environment.

THE PLATFORM



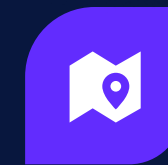
Collaborative Communication

Efficiency & accountability is driven through the collaborative workspace that allows users the ability to create, receive, collaborate & follow tasks that include a chat facility and fully auditable trail.



Super Analytics & Reporting

Comprehensive reporting functionality provides meaningful intelligence and real-time reporting that drives informed decision making.



Situational Awareness

Maps provide the ability to visualise locations, people, infrastructure and assets with GIS and geo-reporting tools in real-time, with the added ability of being able to drill down into granular detail.

Mi-C3 INTERNATIONAL

Mi-C3 International Limited is a Malta based company that was established in 2014 by



CEO and founder,

GLEN SCOTT

The history and the philosophy of Mi-C3 is in its name which is a combination of two acronyms.

The genesis of the technology was in supporting Command and Control for organisations that needed technology to improve their situational awareness to manage and secure their facilities. However, our technology enabled Command and Control to be enhanced with Collaboration (C3) as organisations were empowered with multi-directional communications that took command and control to a new level as more decision-making could be automated and information flows organised in a way that reams of data are transformed into meaningful intelligence (Mi).

Generations of the Mi-C3 software started as a project in the early 2000's as a solution to support a large oil and gas company operating across multiple countries to help manage its complex operation and considerable security risk spread over a wide and poorly accessible geographical area before the Internet of Things (IoT) was widely understood, and has subsequently grown to over 30,000 sites, and monitoring more than 1 million end points.



A MULTI-AWARD WINNING COMPANY WITH A TRACK RECORD OF DELIVERY AND CUTTING-EDGE TECHNOLOGY INNOVATION

CERTIFIED

- EN ISO/IEC 27001_2013 - Information Security Management System
- EN ISO 9001:2015 - Quality Management System
- EN ISO 20000-1:2011 - Service Management System Requirements

AWARDED

- 2017 MCA eBusiness Awards Winner: Best B2B Application
- 2018 World Summit Awards - Finalise B2B Platform
- 2020 MTN Innovation Awards: Leading Solution - IoT in Mining
- 2020 MTN Innovation Awards: Leading Solution - IoT in Smart Utilities

COMPLIANT

SOC 2 Type II compliancy ensures that a company's information security measures are in line with the unique parameters of today's cloud requirements.

AFFECTLI

OUR GLOBAL TEAM



LEADERSHIP TEAM



GLEN J SCOTT
CEO & FOUNDER

- > Entrepreneur at heart, with extensive industry knowledge
- > Built a number of successful companies in the IoT space, Telematics, IT, Call Centre Support, Mining and various other sectors
- > His Passion to make organisations more effective through revolutionising the way they operate was the inspiration for AFFECTLI



NONA KETTLEWELL
COO

- > Entrepreneur 30+ years Project Management in Mining / Oil & Gas / ICT heart, with extensive industry knowledge
- > Experience in many countries: Middle East, Africa, Europe, North America
- > Wealth of experience & ensures we follow global best practices



MARK SCHORMANN
CIO

- > Serial entrepreneur (15+ startups)
- > Built a number of successful companies in the Passionate about AI - busy with PhD in Deep Learning space, Telematics, IT, Call Centre Support, Mining and various other sectors
- > Masters in Technology Entrepreneurship - summa cum laude (UMD)



BERNE VAN DE LAAR
CRO

- > Studied B.Com Accounting & Auditing Articles
- > Has executive management experience in banking
- > COO of Telecoms startup and infrastructure

TRACTION & VERTICAL MARKETS

Building a professional value added distributor network



Establishing professional partnerships & integrations





“It Is Not The Strongest Of The Species That Survives, Nor The Most Intelligent That Survives. It Is The One That Is The Most Adaptable To Change.”

- Charles Darwin -

THANK YOU!



Abacus Business Centre Level 1, Dun Karm Street,
B'Kara Bypass, Birkirkara, BKR 9037, Malta

Online details:

www.affectli.com for product information or
www.mi-c3.com for company information