

SECURAM TOUCH

Model: SH-TB01

SECURAM Systems, Inc.

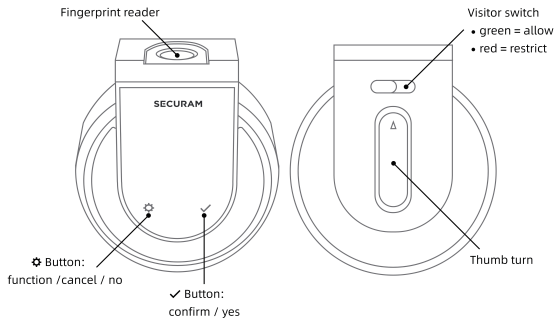
Doc.No.: SH-TB01-201230

Version No.: V1.02

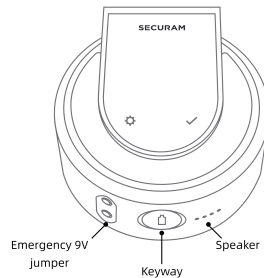
Date: 2020-12-30

Congratulations on your purchase of the SECURAM Touch, the smart fingerprint deadbolt lock.

Quick Tour of the Touch



- The Touch has 30 user capacity (including administrator)
 - › Each user can register up to 2 fingerprints
- Users can be set as Owners or Visitors
 - › Owners can unlock using fingerprint or code
 - › Visitors can unlock using fingerprint or code, provided the visitor switch is set to green
- The first user added is the Administrator
 - › Administrator can:
 - unlock using fingerprint or code
 - manage all users
 - access all programming menus



Installation:

Download the SECURAM app from the App Store or Google Play Store.

Follow the instructions in the app to install the SECURAM Touch.

To open the lock with the default Administrator code:

The default Administrator code is 123456.

Enter 123456 then ✓ button, to open the lock using the default Administrator code.

Set Up:

The easiest way to set up your SECURAM Touch is to follow the voice guidance.

Press the Function ⚙ button to begin:

• Add User Press 2 - To add the first user - Administrator

- › Add User
- › Enter code - enter the admin code - the default is 123456
- › Verified Successfully
- › Enroll the Administrator first
- › Place first finger - place finger on fingerprint reader on the top of the touchpad
- › Place finger and Lift finger as instructed

NOTE: if you do not want to add a fingerprint for a user, press ⚙ to skip

- › Fingerprint enrolled successfully
- › Place second finger - place a second finger on the fingerprint reader
- › Place finger and Lift finger as instructed
- › Fingerprint enrolled successfully
- › Enter new code followed by check mark- enter a unique code between 4 and 8 digits in length, followed by ✓ button

NOTE: if you do not want to add a code for this user, press ⚙ to skip

- › Repeat new code - enter the same code again followed by the ✓ button
- › Operation successful

IMPORTANT: this new code is the Administrator code. It replaces the default Administrator code 123456.

- › To add other users, follow the same process as above.
- › You can categorize users as either owners (by selecting 1) or visitors (by selecting 0)
 - Visitor access can be disabled at any time by toggling the visitor access button above the thumbturn.

Masking Codes: Valid codes can be 4-8 digits in length. We have added the ability to mask your code by adding extra digits to your valid code. Masking can be used in case someone is watching as you enter your code and you don't want them to know your code. To mask your code, enter a maximum of 9 digits where your code is entered as consecutive digits. For example:

- › Valid code is 9876
- › To mask your code, you could enter 789876824 (9 digits)
- › Likewise, you could enter 1987688 plus the ✓ button (less than 9 digits)
- › The lock will open

NOTE: masking codes is a **built-in** feature.

• Delete User press 3

- › Delete User
- › Please login as Administrator - enter the Administrator code or fingerprint
- › Verified Successfully

› *Press 1 for Owners; 0 for Visitors*

- 1 = *Would you like to delete all owners?*

· Press ✓ - to delete all owners

· Press ⚙ - cancel operation

· Owner(s) deleted successfully - All Owners will be deleted except for the Administrator

- 0 = *Would you like to delete all visitors?*

· Press ✓

· Press ⚙ - cancel operation

· Visitor(s) deleted successfully

Note: Individual Owners/Visitors can be deleted in the SECURAM app.

• **Set Volume press 6**

› *Press 6 to adjust volume*

- Press 6 - Volume High

· Press ✓ to confirm

- Press 6 - Volume Off

· Press ✓ to confirm

- Press 6 - Volume Low

· Press ✓ to confirm

- Operation Successful

• **Pair phone press 8**

› *Pairing Mode*

› *Please log in as Administrator*

› *Verified successfully*

› *Now please follow the instructions on the app to complete the setup*

Lock Operation

• **Unlocking**

› Place fingerprint on sensor

or

› Enter code and press ✓

or

› Use high security key

• **Locking**

› Press SECURAM or any number on the touchpad

• **Auto Lock** - *the lock can be set up to automatically lock after opening. This feature can be set up in the app.*

› *When the prescribed auto lock time elapses, the system extends the lock bolt*

• **Remote control from app**

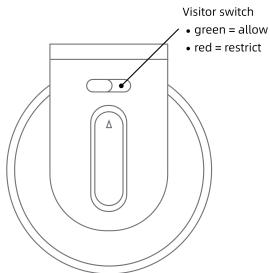
› Locking and Unlocking

› History, Alerts, One-time access code etc.

Restricting Visitor Access

The Visitor switch can be set to green or red by manually sliding the switch.

- Green = visitor access allowed
- Red = visitor access restricted, and upon entry of a visitor code or fingerprint, the lock will remain locked.



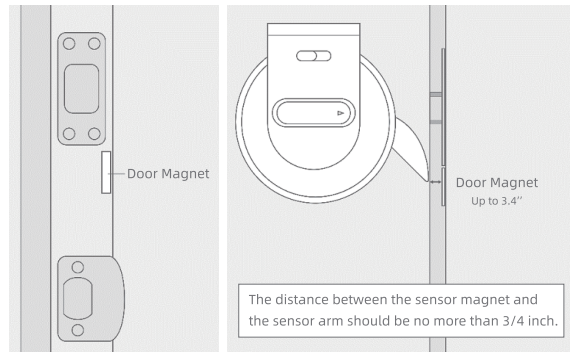
Voice prompt: "Visitor access restricted."

Integrated door sensor

The SECURAM Touch is equipped with an optional integrated door sensor to detect door open/closed position. To set up the door sensor, rotate the sensor arm from the back of interior assembly. You may need to remove the interior assembly from the door to rotate the sensor arm.

Then secure the sensor magnet to the door frame with the included tape. The distance between the sensor magnet and the sensor arm should be no more than **3/4 inch**.

The sensor will then report to the app the door position.



Resetting to default

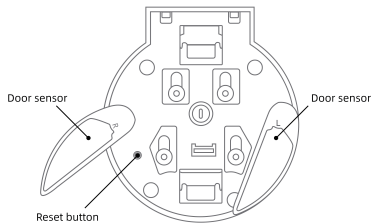
The lock can be reset to default by pressing the reset button on the back of the interior assembly.

- Open the battery compartment
- Raise the latch to release the interior assembly from the mounting plate
- Slide away from the spindle
- Rotate the integrated door sensor arm to access the reset hole
- Using a paper clip press and hold the reset button inside the reset hole for approximately 5 seconds.


You will hear "Reset to Factory Default"

- All user codes and fingerprints will be deleted and the Administrator code will be reset to 123456.

You will need to pair the touch to APP again to monitor



Arming the system

After locking the door, press  then 0 button within 10 seconds. This will arm the system by turning on all notifications for all connected SECURAM devices.

Repeated invalid code entry - Lock Out Mode

After entering 5 invalid codes, the touchpad is disabled for 3 minutes - Lock out mode. Even though the touchpad is disabled, fingerprints or the app can still open the lock.

Low Battery

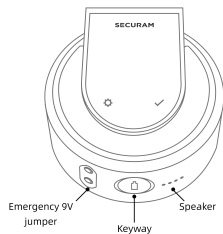
Low battery voltage: 4.6 to 5.0 volts

Under a low battery condition, the SECURAM Touch will provide a low battery warning upon code or fingerprint entry. The lock will unlock with the voice warning "Low Battery", and the low battery indicator flashes red. Please change battery.

NOTE: Lock programming cannot be performed with a low battery.

Emergency 9V Jumper

In the event that low batteries have not been replaced and the batteries are completely dead, the Emergency 9V Jumper can be used to power the lock to open. Contact the jumper with a 9V battery (polarity does not matter) and enter code or verify fingerprint to unlock.



High Security Key

The SECURAM Touch is equipped with a mechanical override key to open the lock. Insert the key and turn to unlock.

Strike Plate & Security Box (Optional)

Inside the package you will find the Strike Plate and Security box. Install the strike plate on the jamb of the door to receive the deadbolt. The Security box can be installed behind the strike plate as necessary.

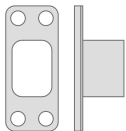
Specifications

Rated Voltage: DC 6V

Working Temperature: -10 °C- 60°C
14 °F - 140 °F

Working Humidity (max): <95% RH

Password Length: 4-8 Digits



Safety Information

Safety instructions for batteries with battery products:

- Use Two CR123A type batteries;
- Non-rechargeable batteries cannot be charged;
- The battery should be placed with the correct polarity (+, -);
- The used battery should be taken out of the product;
- The battery port must not be short-circuited;
- When not in use for a long time, please remove the battery to prevent leakage;
- Do not throw the battery into fire.
- Do not discard used batteries.

Operating environment

- Keep away from strong magnetic appliances or objects when installing equipment.
- Install the device on the outside and inside of the door.
- Use this product within the temperature range of 14 °F - 140 °F (-10°C~60°C).
- Avoid rain or moisture on the device, otherwise it may cause damage to the device.

Children Safety

- This device and its accessories may contain small parts. Keep the device and its accessories out of the reach of children.
- This device is not a toy. Children should use the device under adult supervision.
- Keep away from children and pets.

Maintenance

- Do not step on or hit the device to avoid damage to the device.
- Equipment damage caused by human factors is not covered by the warranty.
- When the battery is too low, please replace the battery in time to prevent the device from working improperly due to low battery.
- Clean the device with a dry towel.

Warranty

SECURAM Touch is protected by a 12-month warranty against Manufacturer's defects. This warranty is applicable for 12 months from the Date of Manufacture or 12 months from the Date of Consumer Purchase, if the product has been registered for the Consumer Purchase Warranty. Customers are invited to register their product for this 12-month Consumer Purchase Warranty upon installation or receipt of their safe lock. The Consumer Purchase Warranty Registration form is packaged with each product.

FCC WARNING

This device complies with part 15 of the FCC Rules. Operation is subject to the following two conditions: (1) this device may not cause harmful interference, and (2) this device must accept any interference received, including interference that may cause undesired operation.

Any changes or modifications not expressly approved by the party responsible for compliance could void the user's authority to operate the equipment.

NOTE: This equipment has been tested and found to comply with the limits for a Class B digital device, pursuant to Part 15 of the FCC Rules. These limits are designed to provide reasonable protection against harmful interference in a residential installation. This equipment generates, uses and can radiate radio frequency energy and, if not installed and used in accordance with the instructions, may cause harmful interference to radio communications. However, there is no guarantee that interference will not occur in a particular installation.

If this equipment does cause harmful interference to radio or television reception, which can be determined by turning the equipment off and on, the user is encouraged to try to correct the interference by one or more of the following measures:

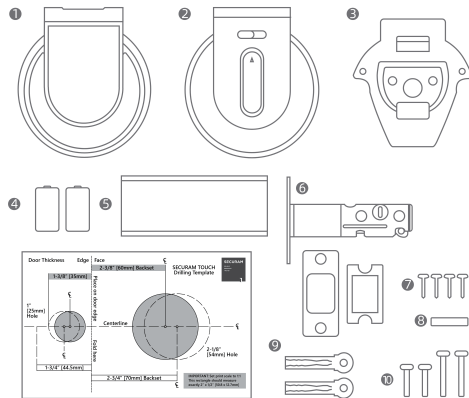
- Reorient or relocate the receiving antenna.
- Increase the separation between the equipment and receiver.
- Connect the equipment into an outlet on a circuit different from that to which the receiver is connected.
- Consult the dealer or an experienced radio/TV technician for help.

The device has been evaluated to meet general RF exposure requirement.

The device can be used in portable exposure condition without restriction.

FCC ID: 2AT86-SHTB01

What's included in the package



1 Touchpad Assembly

2 Interior Assembly

3 Mounting Plate

4 CR123A Batteries

5 Tape

6 Deadbolt Assembly & Strike Plate

7 Strike Screws (2) & Deadbolt Screws (2)

8 Door Magnet

9 High Security Keys

10 Mounting Screws (4)