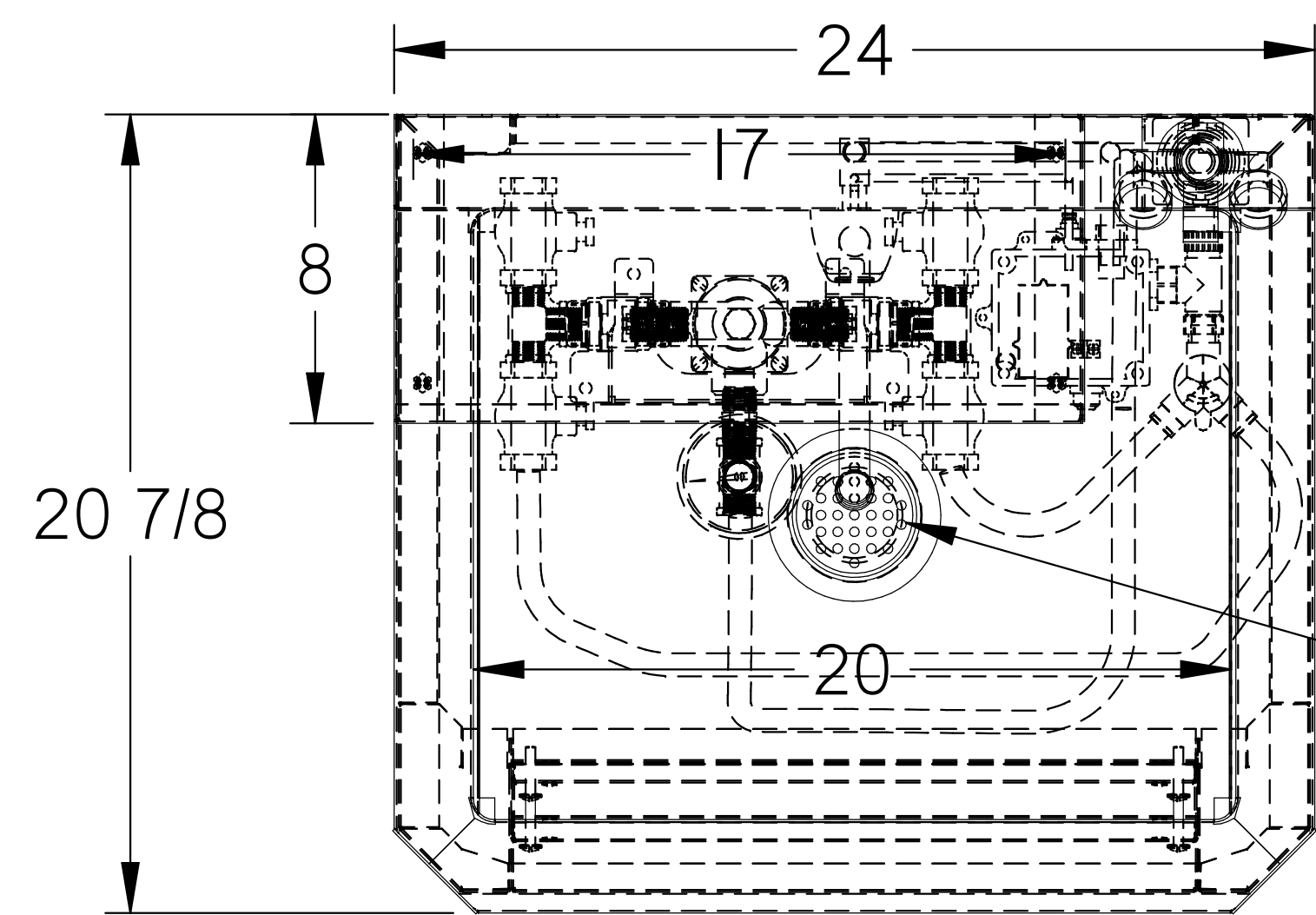


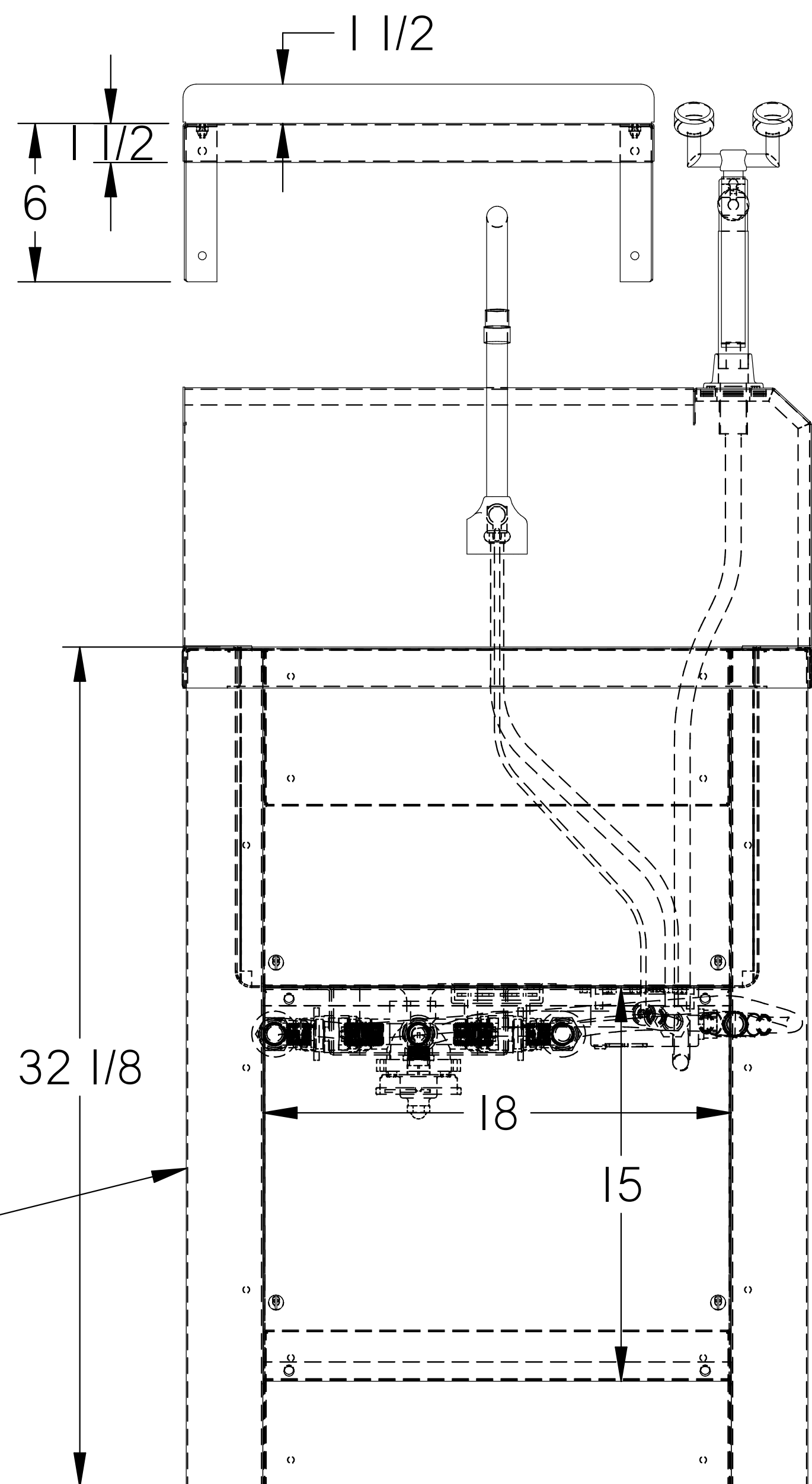
<small> DEBURR ALL EDGES ROUTER SUPERFACES FINISH UNLESS OTHERWISE SPECIFIED DIMENSIONS ARE IN INCHES ALL ANGLES ARE 90° </small>	<small> FINISH: 316ss POLISH: #4 polish DATE: 8/23/2019 DRAWN BY: wkidd APPROVED: </small>	<small> ORDER NAME: CRD-316-1620-IE-SK PART NO.: </small>	<small> REV. 2 </small>
<small> DECIMALS: .000 x +.010" / .001 x +.010" FRACTIONS: 1/16" x +.010" / 1/32" x +.010" UNLESS OTHERWISE SPECIFIED ALL DIMENSIONS ARE TO CENTER UNLESS NOTED OTHERWISE DO NOT SCALE DRAWING </small>	<small> SHEET 1 OF 11 </small>		



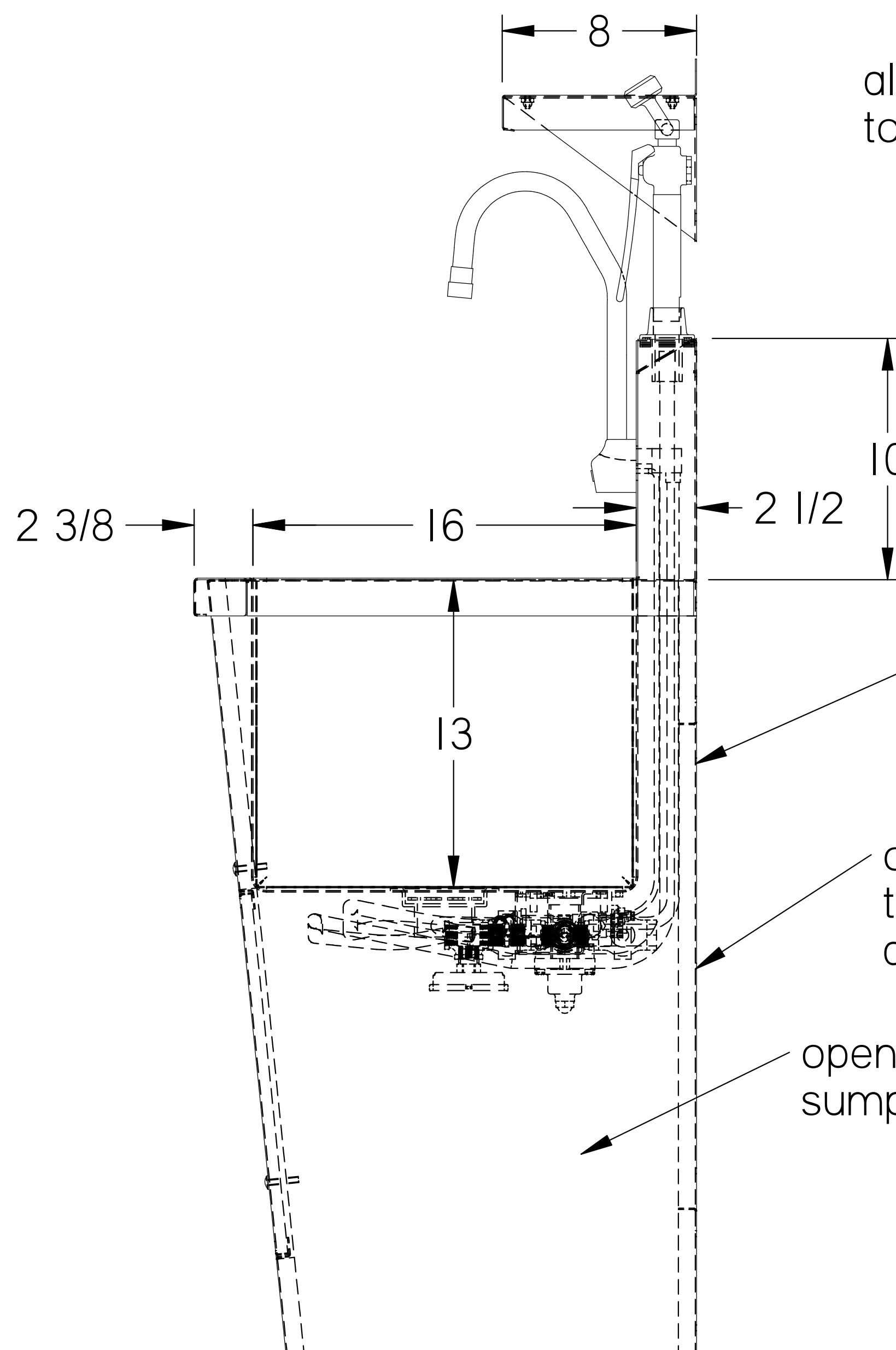
removable flat top strainer drain - tail piece and drain by others

sink removable from cabinet - not required for installation

optional shelf



plumbing valves controls and manifold mounted inside left cab side.



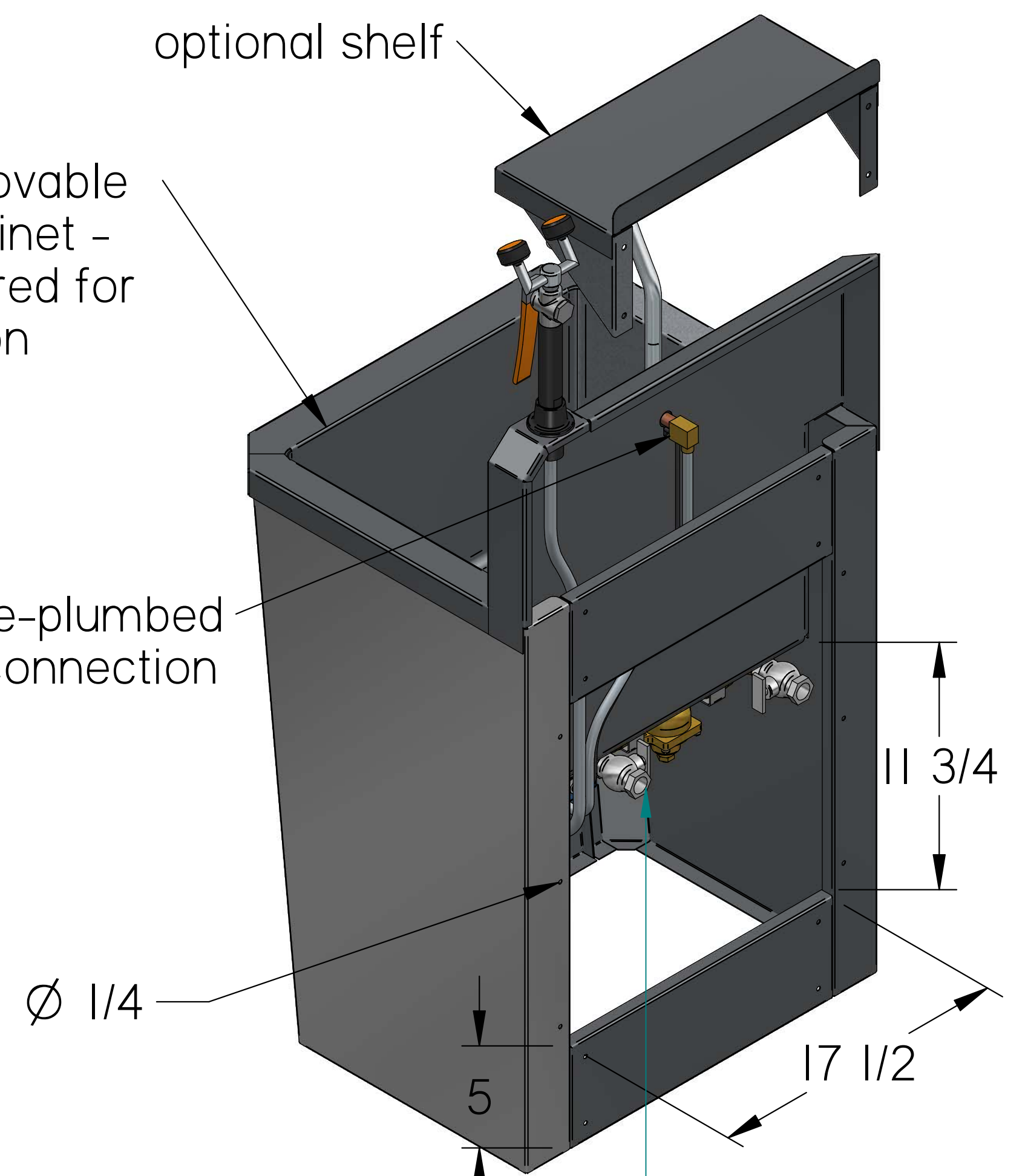
all fixtures pre-plumbed to common connection

wall mounting holes in rear of cabinet

open back for access to plumbing supply and drain

open space for sump or other equipment

open bottom

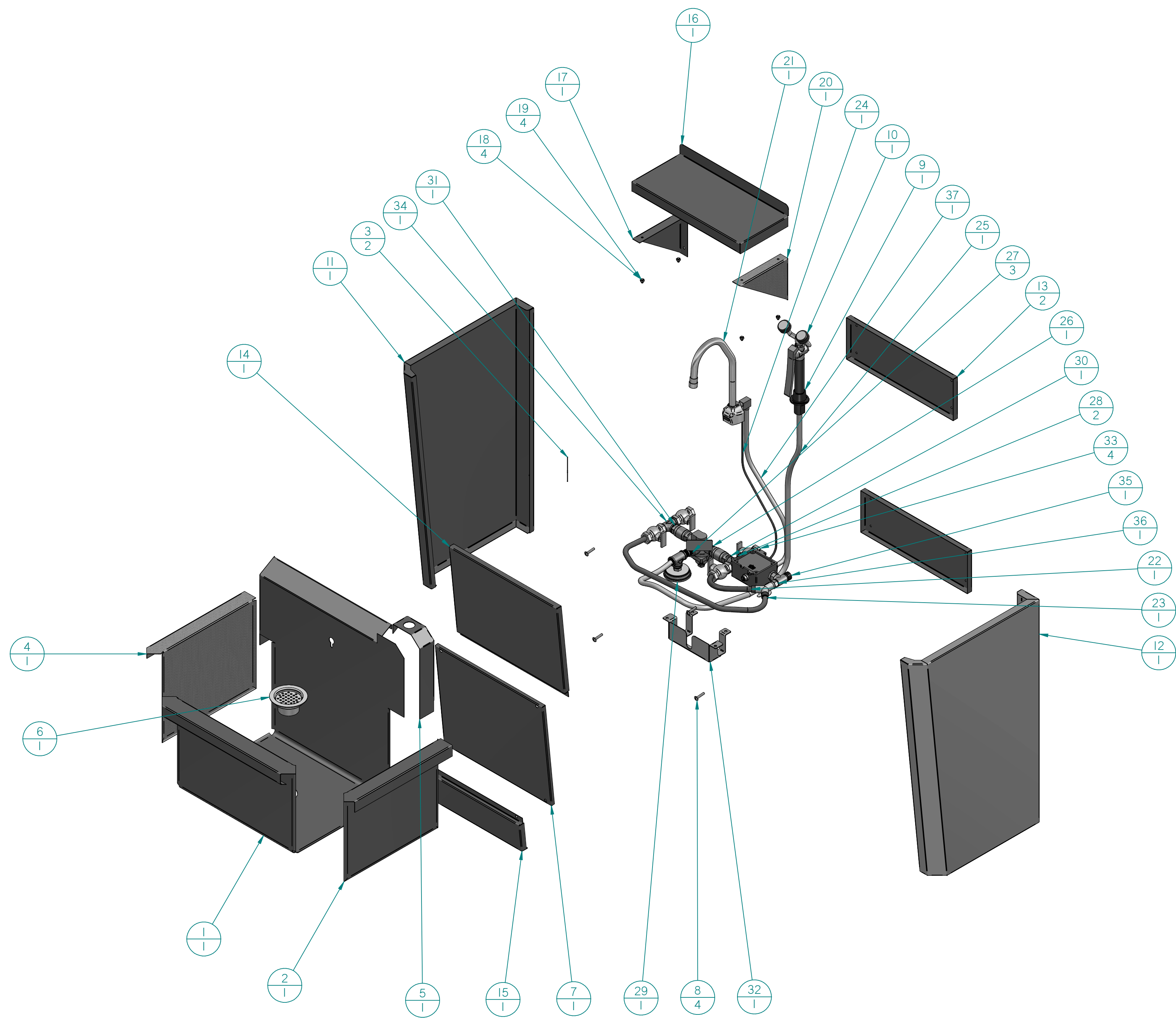


hot and cold water hook ups .375 compression



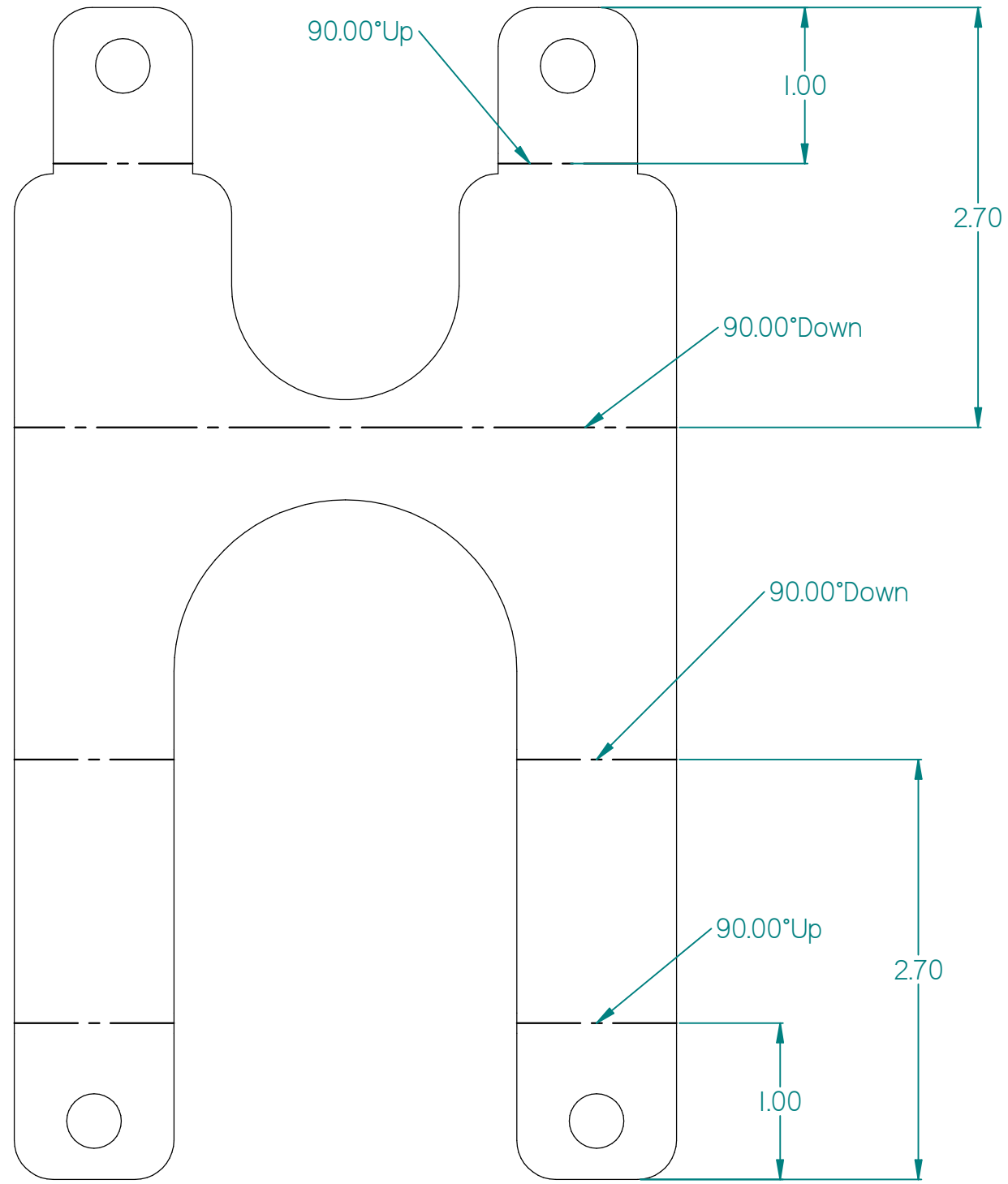
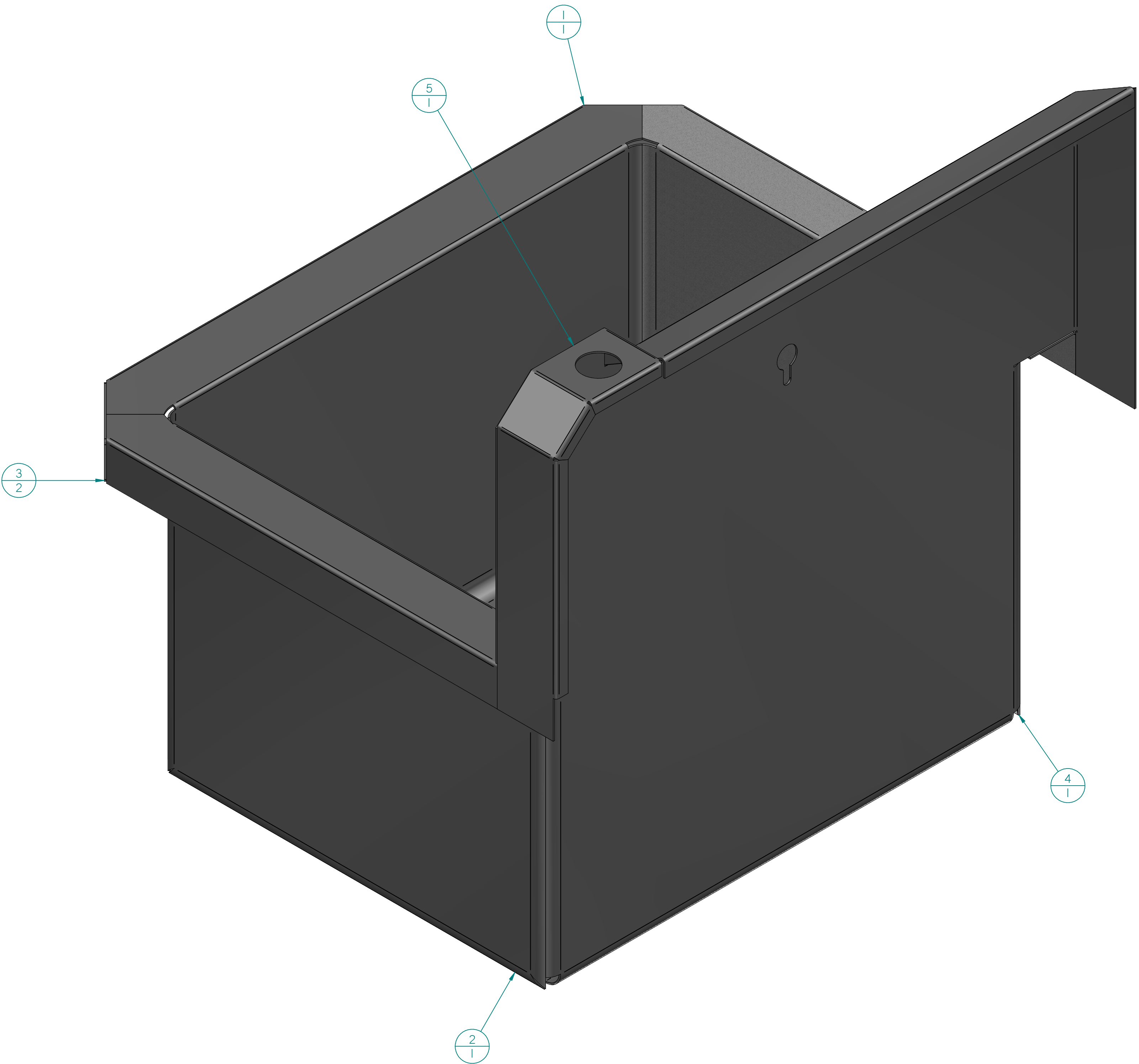
316ss	ORDER NAME	CRD-316-1620-IE-SK
#4 polish	DATE	8/23/2019
DATE	DESIGNER	wkidd
APPROVED	PART NO.	
SHEET 2 OF 11		REV. 2

Item Number	File Name (no extension)	Material	Gage	Quantity
1	CRD-316-1620-1E-SK- bowl bottom	Stainless Steel, 316	16 gage	1
2	CRD-316-1620-1E-SK- sink sides	Stainless Steel, 316	16 gage	1
3	CRD-316-1620-1E-SK- Fill corner	Stainless Steel, 316	16 gage	2
4	CRD-316-1620-1E-SK- sink sides_mir	Stainless Steel, 316	16 gage	1
5	CRD-316-1620-1E-SK- guardian top plate	Stainless Steel, 316	16 gage	1
6	Flat Strainer Drain - CHG E32-4900	Stainless Steel, 316		1
7	CRD-316-1620-1E-SK-door	Stainless Steel, 316	18 gage	1
8	Truss Head _250-20 x _1.25	Stainless Steel, 316		4
9	AP350-011G Guardian Flange			1
10	G5022 Guardian eyewash handle			1
11	CRD-316-1620-1E-SK- left side body	Stainless Steel, 316	18 gage	1
12	CRD-316-1620-1E-SK- body_mir	Stainless Steel, 316	18 gage	1
13	CRD-316-1620-1E-SK- back plates	Stainless Steel, 316	18 gage	2
14	CRD-316-1620-1E-SK- door top	Stainless Steel, 316	18 gage	1
15	CRD-316-1620-1E-SK- door bottom	Stainless Steel, 316	18 gage	1
16	SS316-0818	Stainless Steel, 316	18 gage	1
17	SS316-0818 wall shelf Bracket	Stainless Steel, 316	16 gage	1
18	Acorn Nut - 250-20	Stainless Steel, 316		4
19	Q36-1112 10_24 weld stud	18-8 Stainless		4
20	8x6 wall shelf Bracket_mir1	Stainless Steel, 316	16 gage	1
21	AutoFaucet			1
22	cold water line	braided ss		1
23	Hot water line	braided ss		1
24	control line	(None)		1
25	eyewash line	braided ss		1
26	Valve body	Brass		1
27	.5 brass nipple	Brass		3
28	5. brass T	Brass		2
29	Temp Gauge			1
30	check valve	Brass		1
31	check valve_mir	Brass		1
32	Valve bracket	Stainless Steel, 316	16 gage	1
33	1/4 turn water supply valve	.5" mpt to .375 comp		4
34	5. brass T_mir	Brass		1
35	Faucet Control			1
36	Faucet mixing valve			1
37	water line	braided ss		1



<small> DEBURR ALL EDGES ROUTER SUPERCEDES PRINT UNLESS OTHERWISE SPECIFIED DIMENSIONS ARE IN INCHES ALL ANGLES ARE 90° TOLERANCES DECIMALS ±.005 FRACTIONS ±.005 UNLESS OTHERWISE SPECIFIED ALL DIMENSIONS ARE TO CENTER UNLESS NOTED OTHERWISE DO NOT SCALE DRAWING </small>	<small> FINISH #4 polish </small>	<small> ORDER NAME CRD-316-1620-1E-SK </small>	<small> PART NO. - </small>	<small> REV. 2 </small>
<small> DATE 8/23/2019 </small>	<small> DRAWN BY wkidd </small>	<small> SHEET 3 OF 11 </small>		

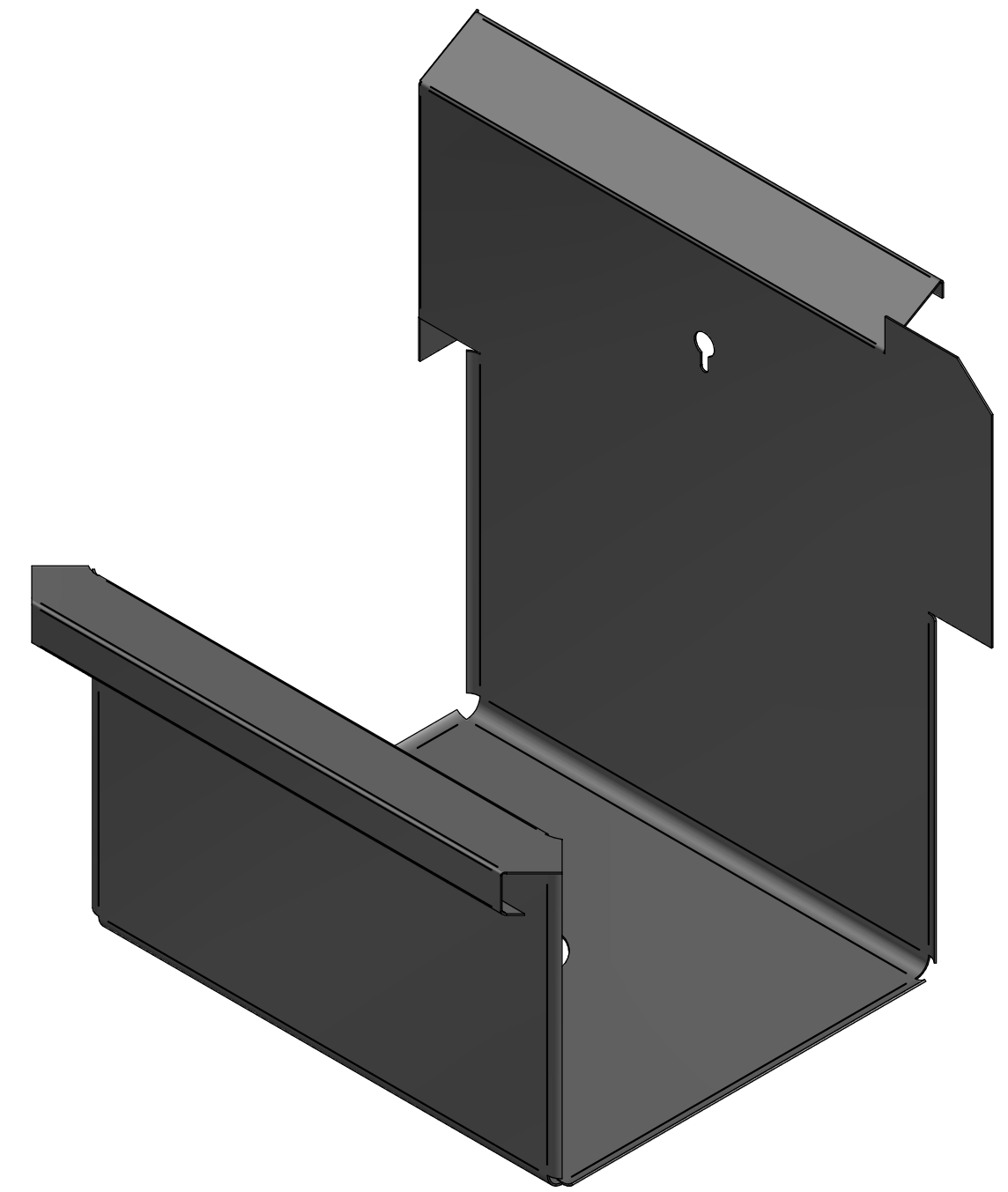
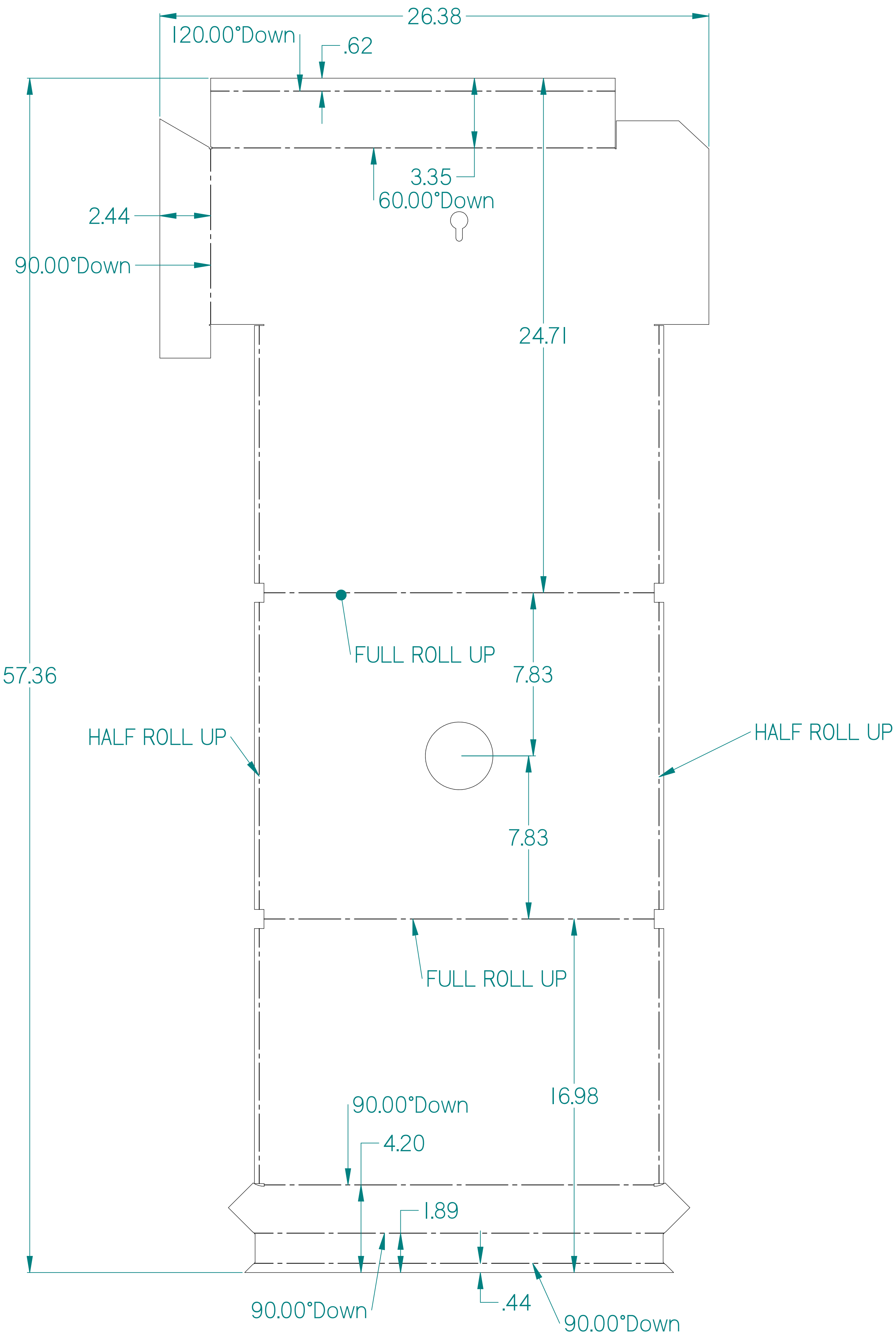
CRD-316-1620-IE-SK- bowl bottom	Stainless Steel, 316	0.062 in	1
CRD-316-1620-IE-SK- sink sides	Stainless Steel, 316	0.062 in	1
CRD-316-1620-IE-SK- Fill corner	Stainless Steel, 316	0.062 in	2
CRD-316-1620-IE-SK- sink sides_mir	16ga Stainless Steel, 304	0.062 in	1
CRD-316-1620-IE-SK- guardian top plate	Stainless steel, 316	0.062 in	1



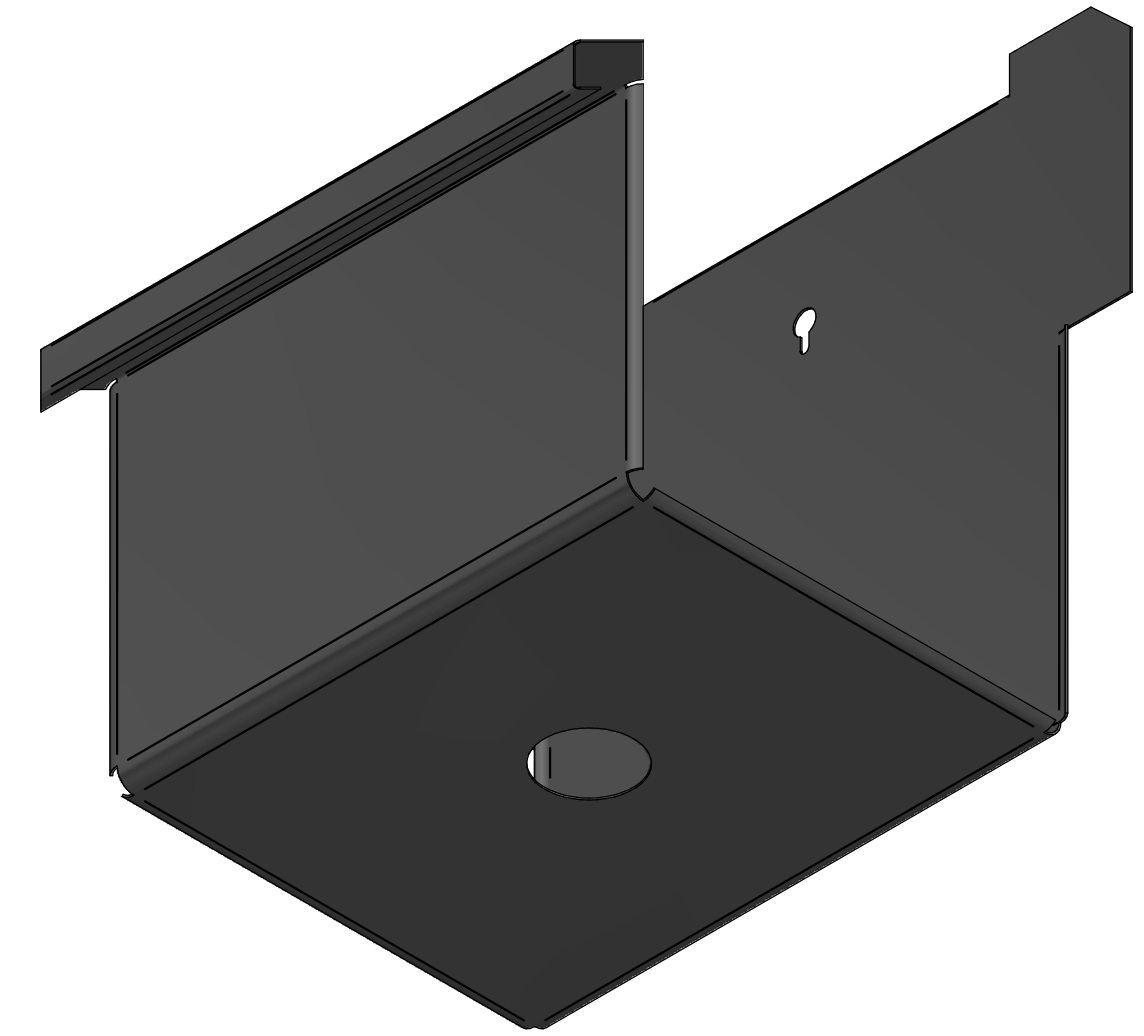
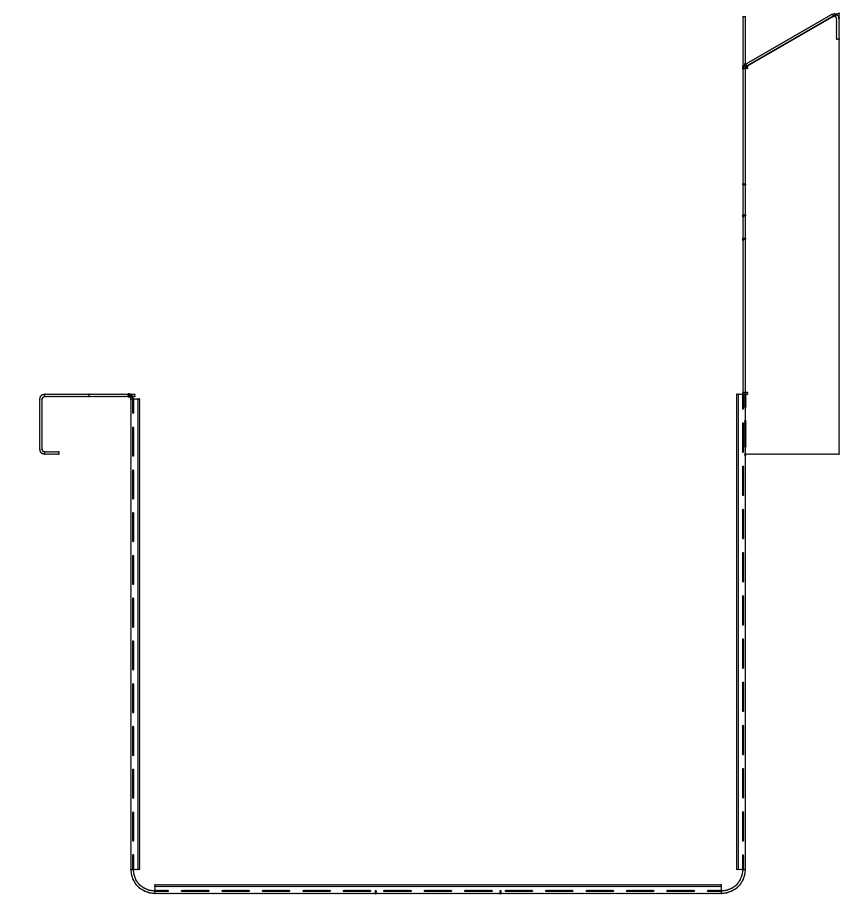
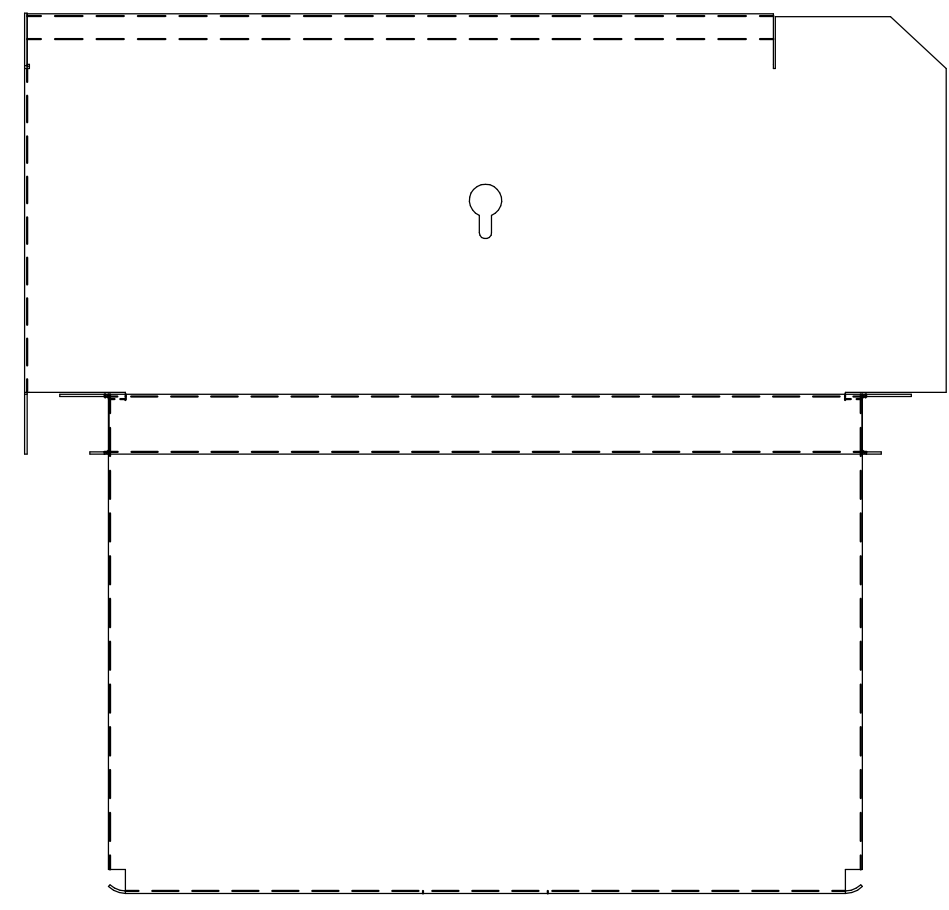
bracket for new valve 521410AC	Stainless steel, 304	0.062 in	1
--------------------------------	----------------------	----------	---



DEBURR ALL EDGES ROUTER SUPERCEDES PRINT UNLESS OTHERWISE SPECIFIED DIMENSIONS ARE IN INCHES ALL ANGLES ARE 90°	316ss	FINISH	#4 polish
TOLERANCES X .000	DATE	8/23/2019	ORDER NAME
XX .001	DESIGN BY	wkidd	CRD-316-1620-IE-SK
XXX .002	APPROVED		PART NO.
UNLESS OTHERWISE SPECIFIED ALL DIMENSIONS ARE ±.001 DO NOT SCALE DRAWING	SHEET	4 OF 11	REV. 2

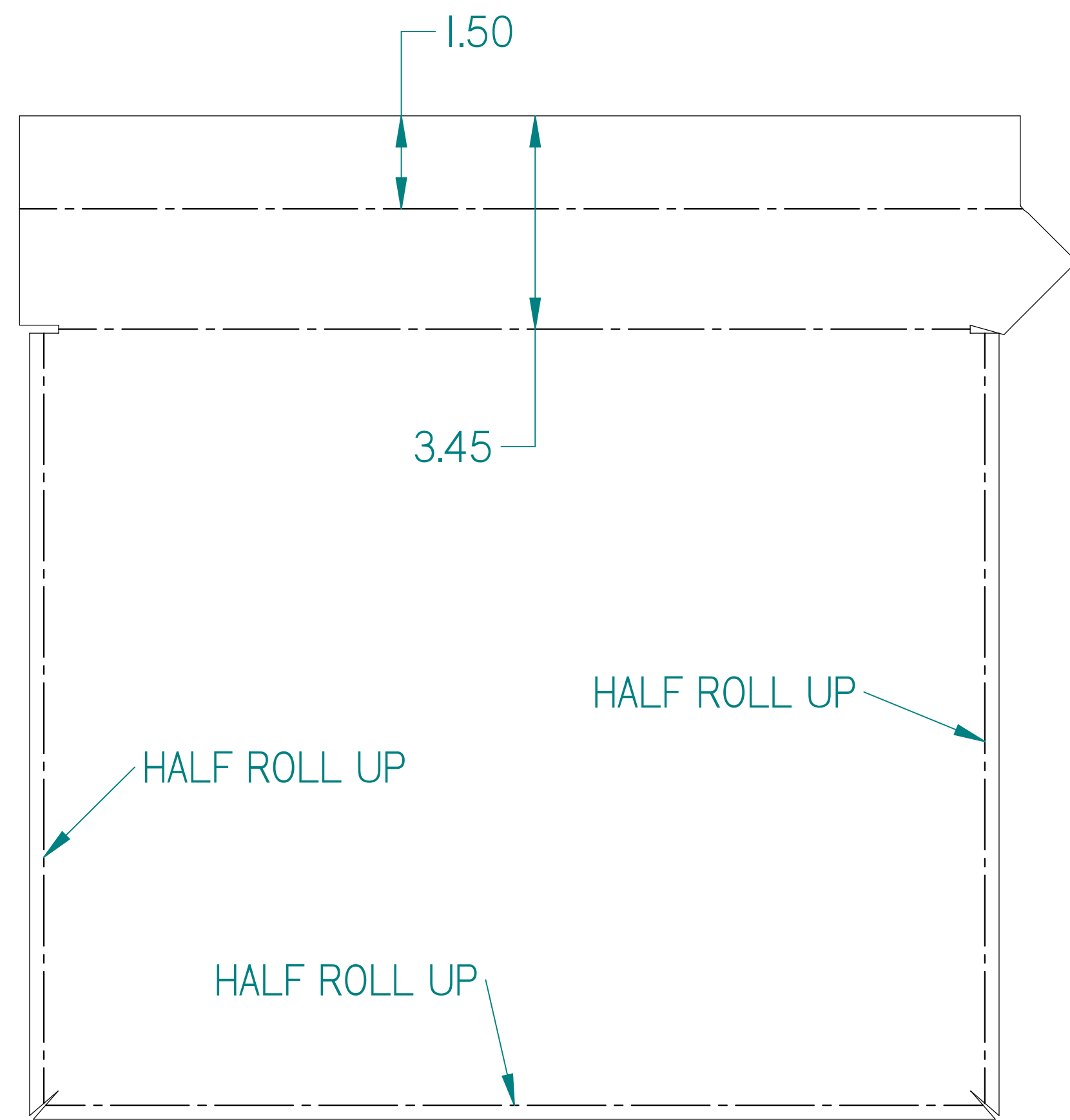
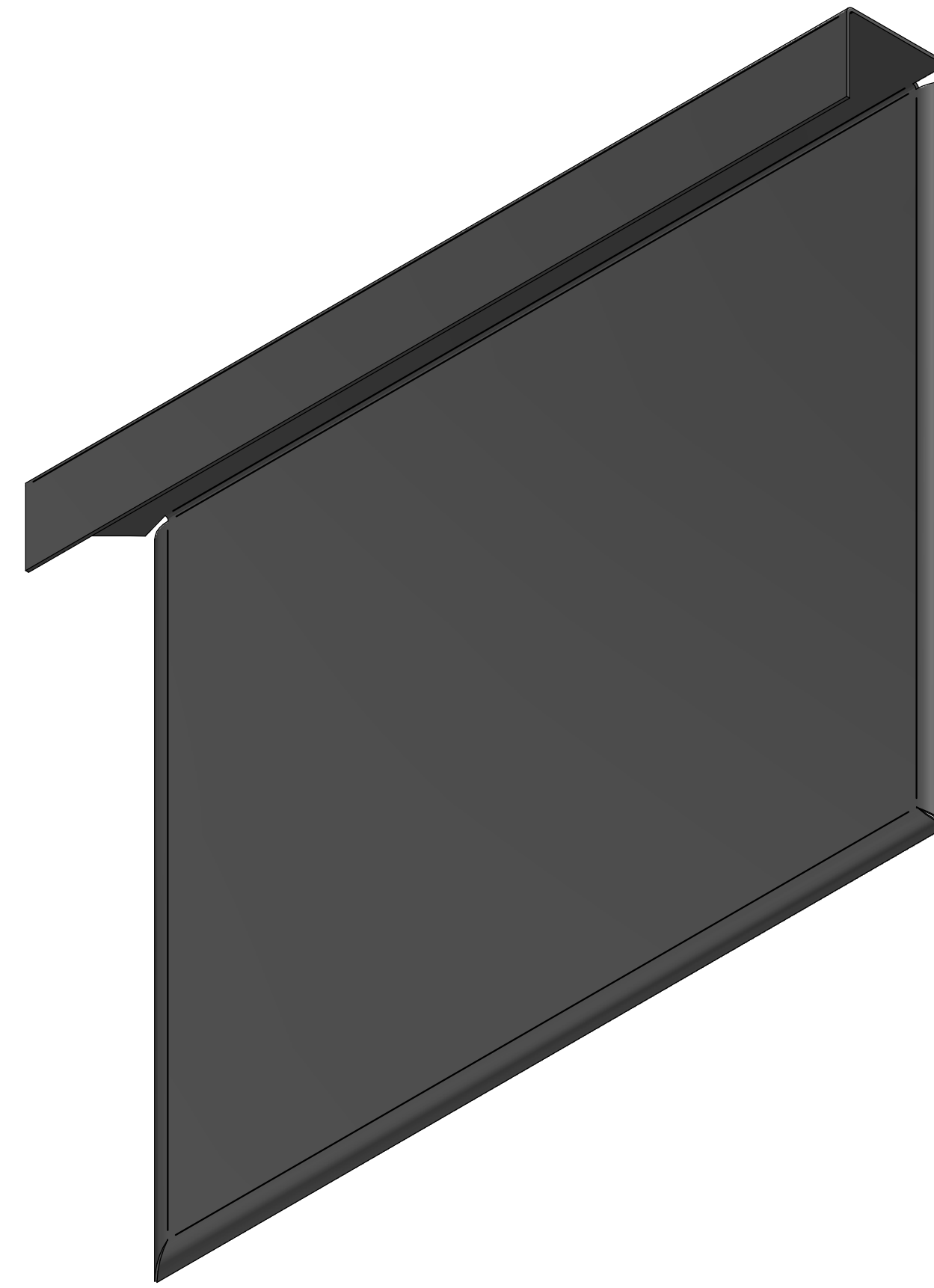
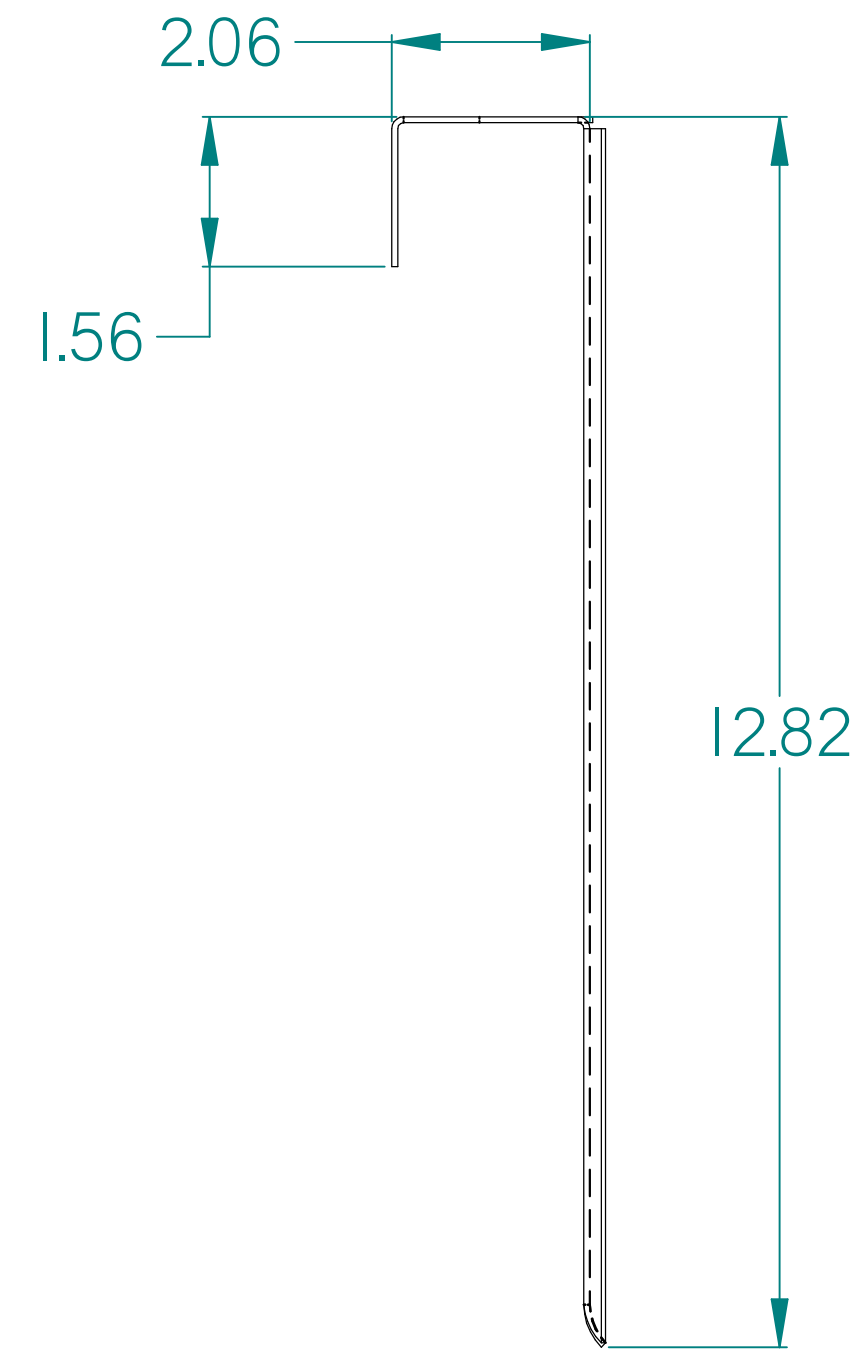


Item Number	File Name (no extension)	Material	Gage	Quantity
1	CRD-316-1620-IE-SK- bowl bottom	Stainless Steel, 316	16 gage	1



DEBURR ALL EDGES ROUTER SUPERCEDES PRINT UNLESS OTHERWISE SPECIFIED DIMENSIONS ARE IN INCHES ALL ANGLES ARE 90°	MATERIAL: 316ss	FINISH: #4 polish	DATE: 8/23/2019	ORDER NAME: CRD-316-1620-IE-SK
TOLERANCES: DECIMALS: ±.005 XX ±.002 XXX ±.001	APPROVED: wkidd	DRAWN BY: wkidd	DATE: 8/23/2019	REV: 2
UNLESS OTHERWISE SPECIFIED ALL DIMENSIONS ARE ±.005 DO NOT SCALE DRAWING	SHEET 5 OF 11			

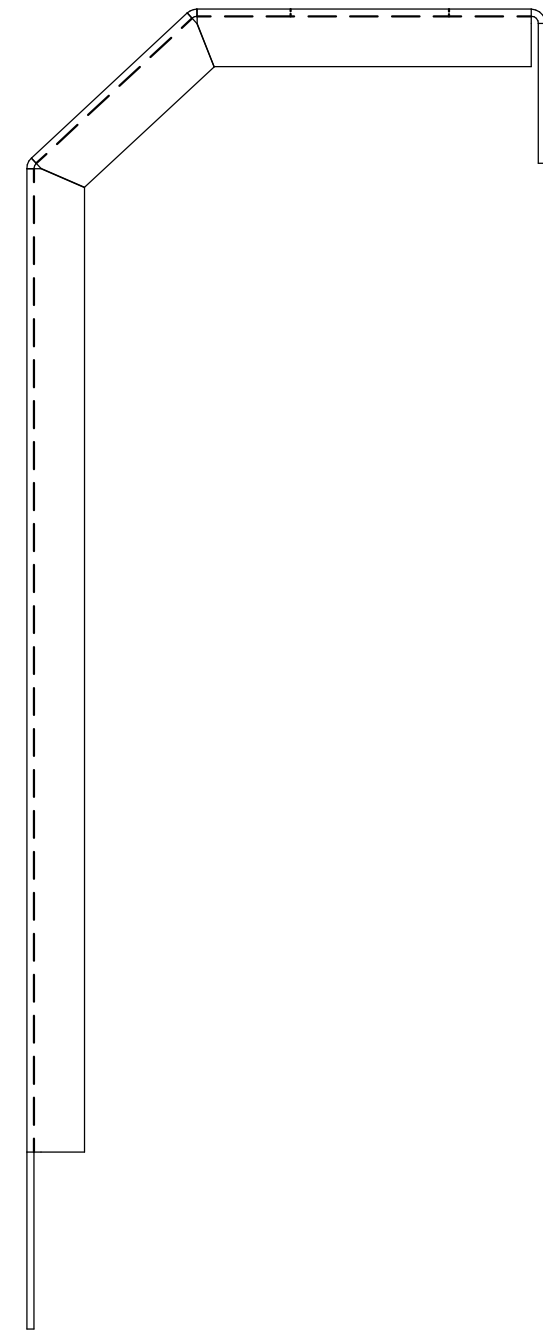
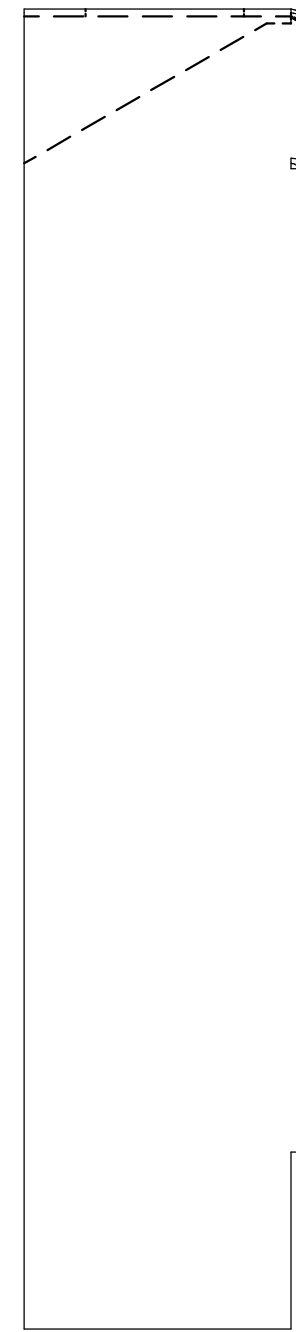




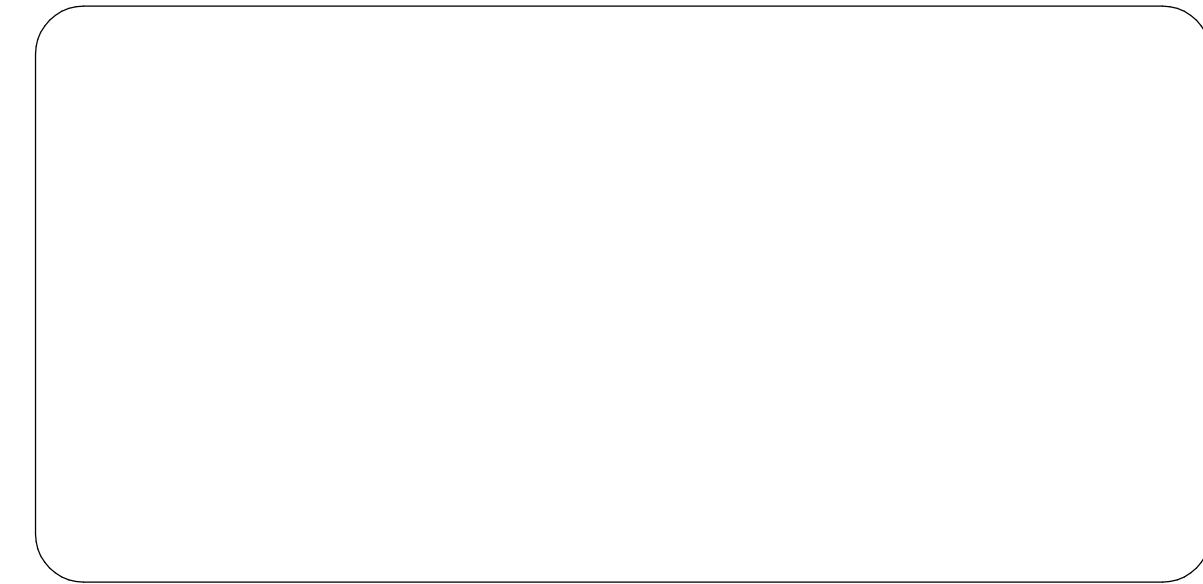
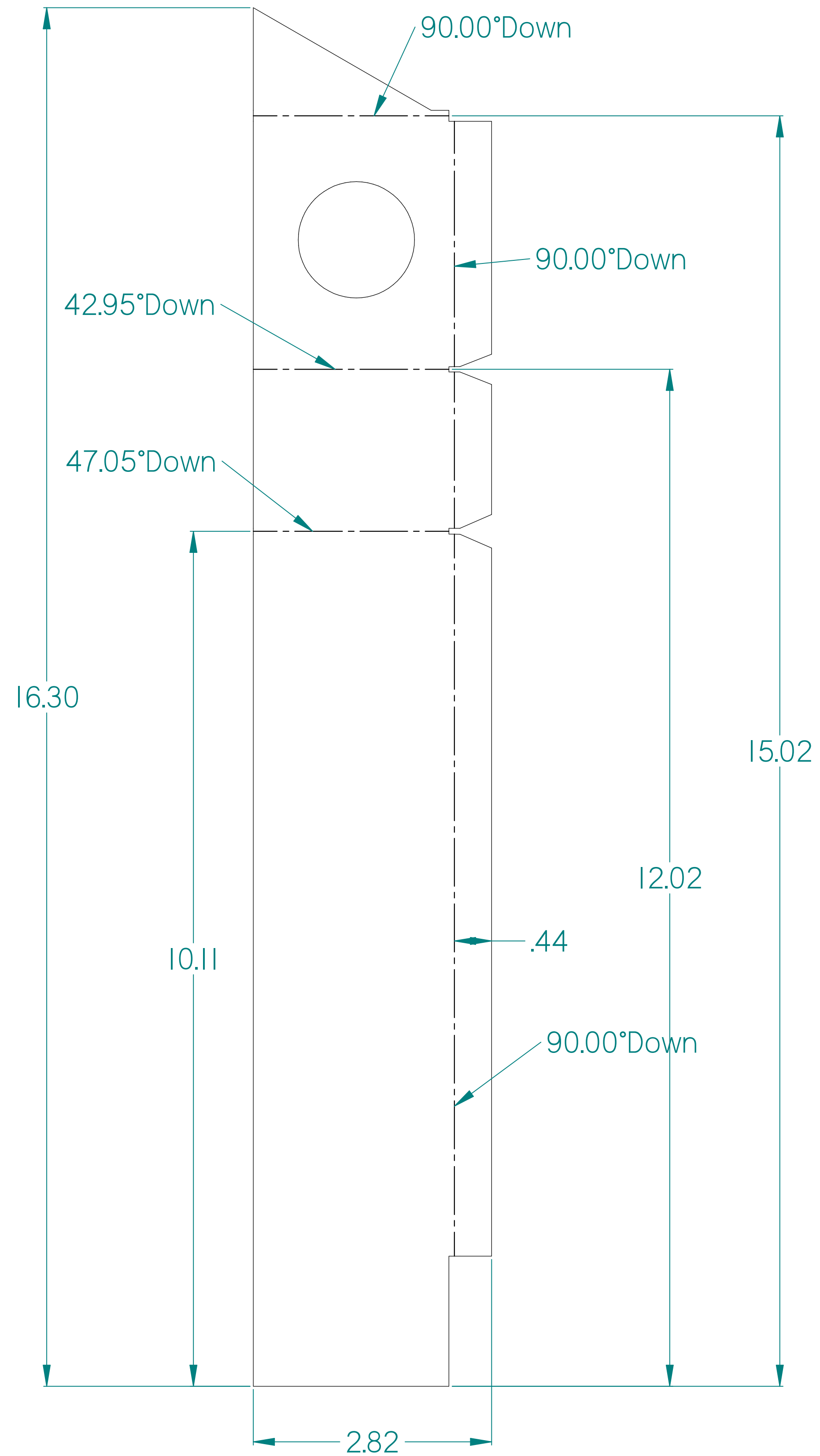
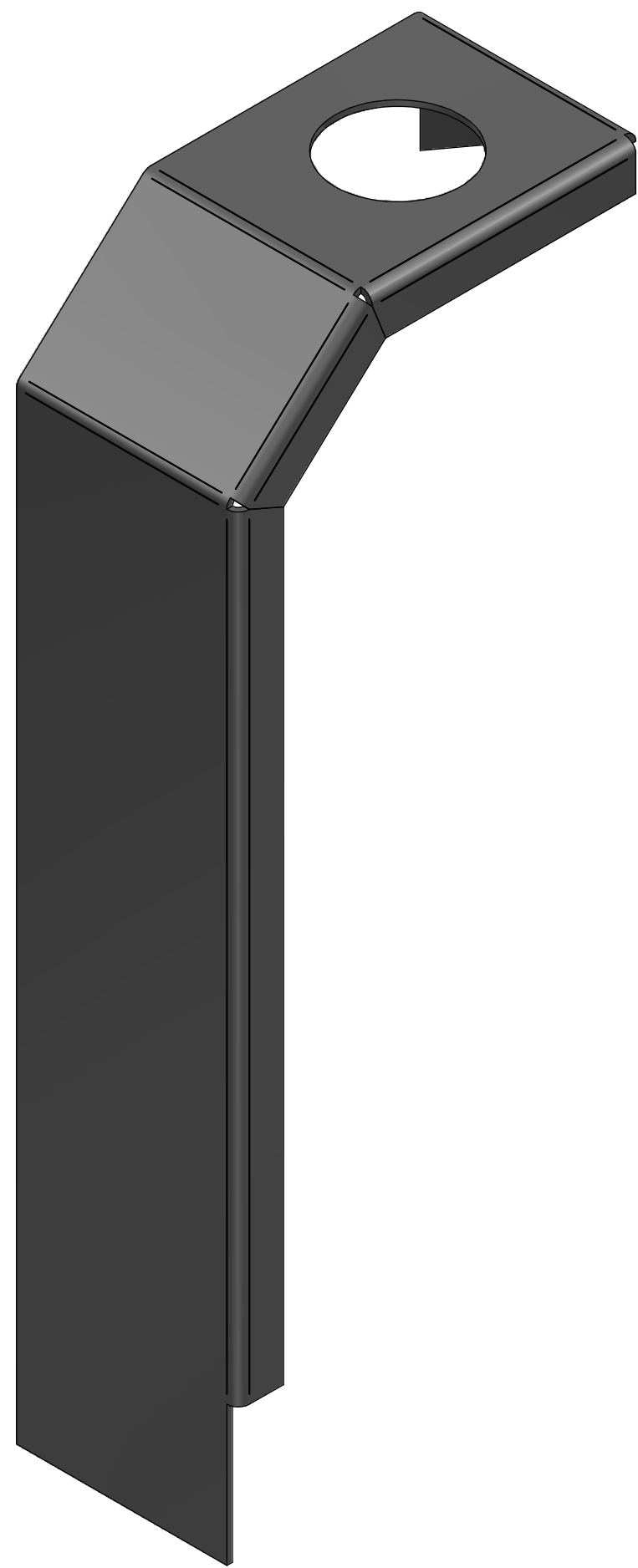
CRD-316-1620-IE-SK- sink sides	Stainless Steel, 316	0.062 in	1 as 1 mirrored
--------------------------------	----------------------	----------	-----------------



DEBURR ALL EDGES ROUTER SUPERFACES FINISH UNLESS OTHERWISE SPECIFIED DIMENSIONS ARE IN INCHES ALL ANGLES ARE 90°	316ss	ORDER NAME	CRD-316-1620-IE-SK
TOLERANCES UNLESS OTHERWISE SPECIFIED	#4 polish	DATE	8/23/2019
DECIMALS ±.010	xx ±.010"	DRAWN BY	wkidd
XX ±.002	xx ±.002"	APPROVED	
UNLESS OTHERWISE SPECIFIED ALL DIMENSIONS ARE IN INCHES DO NOT SCALE DRAWING		PART NO.	
		SHEET	6 OF 11
		REV.	2



Item Number	File Name (no extension)	Material	Gage	Quantity
1*	CRD-316-1620-IE-SK- guardian top plate	Stainless Steel, 316	16 gage	1

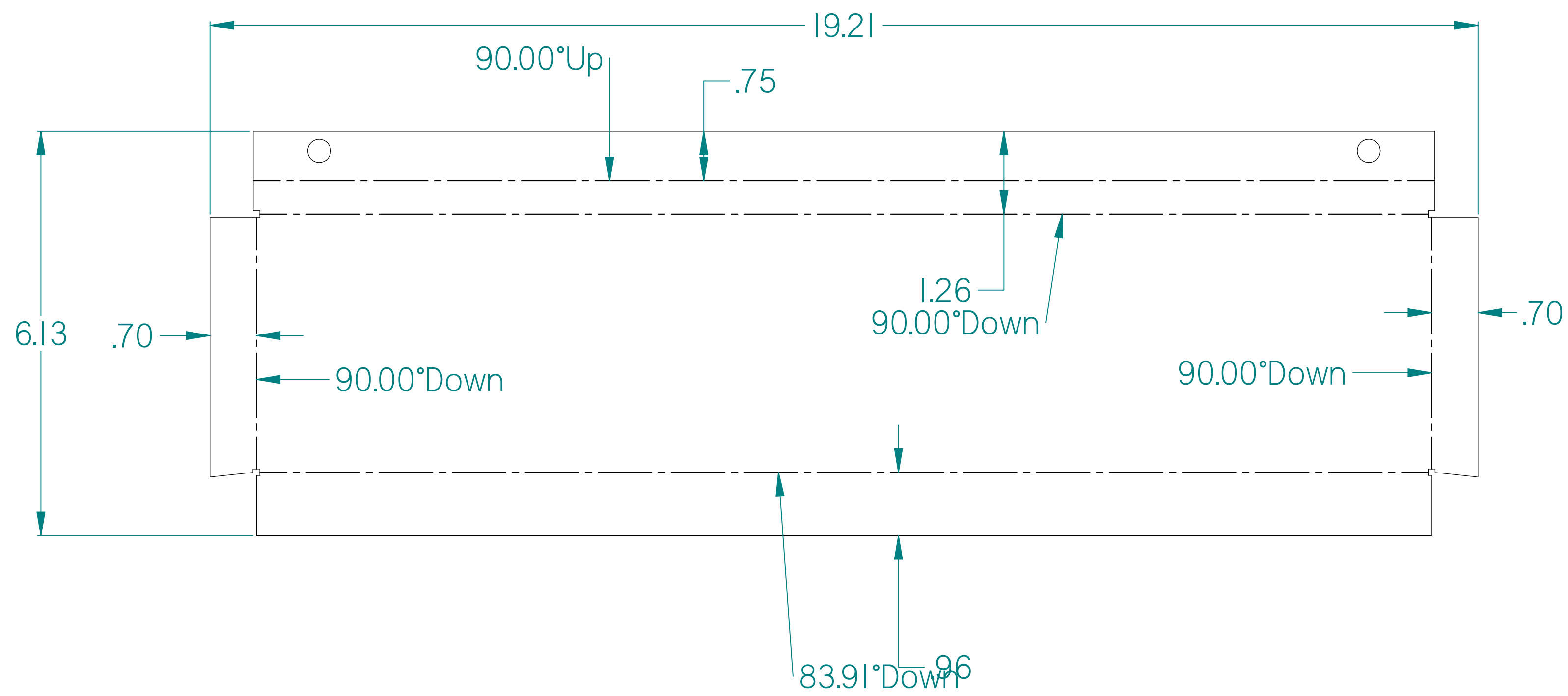
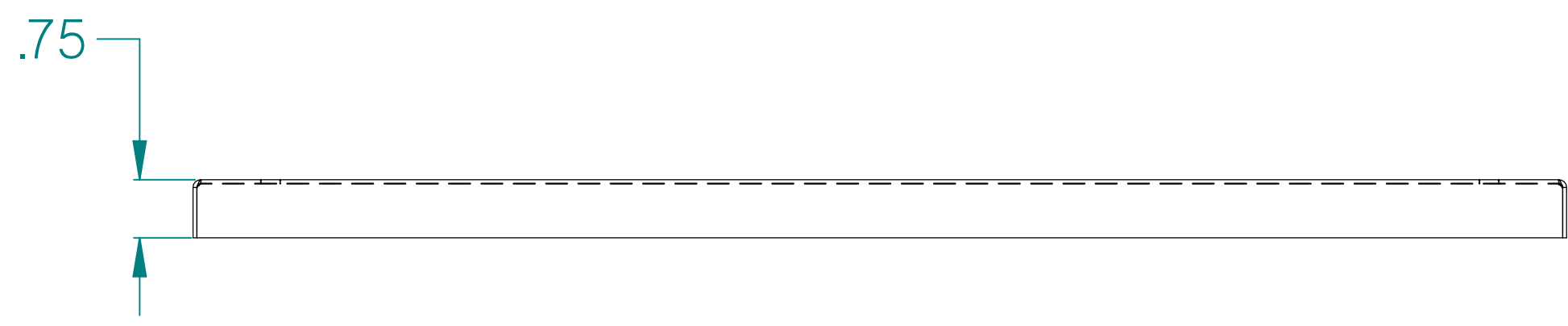
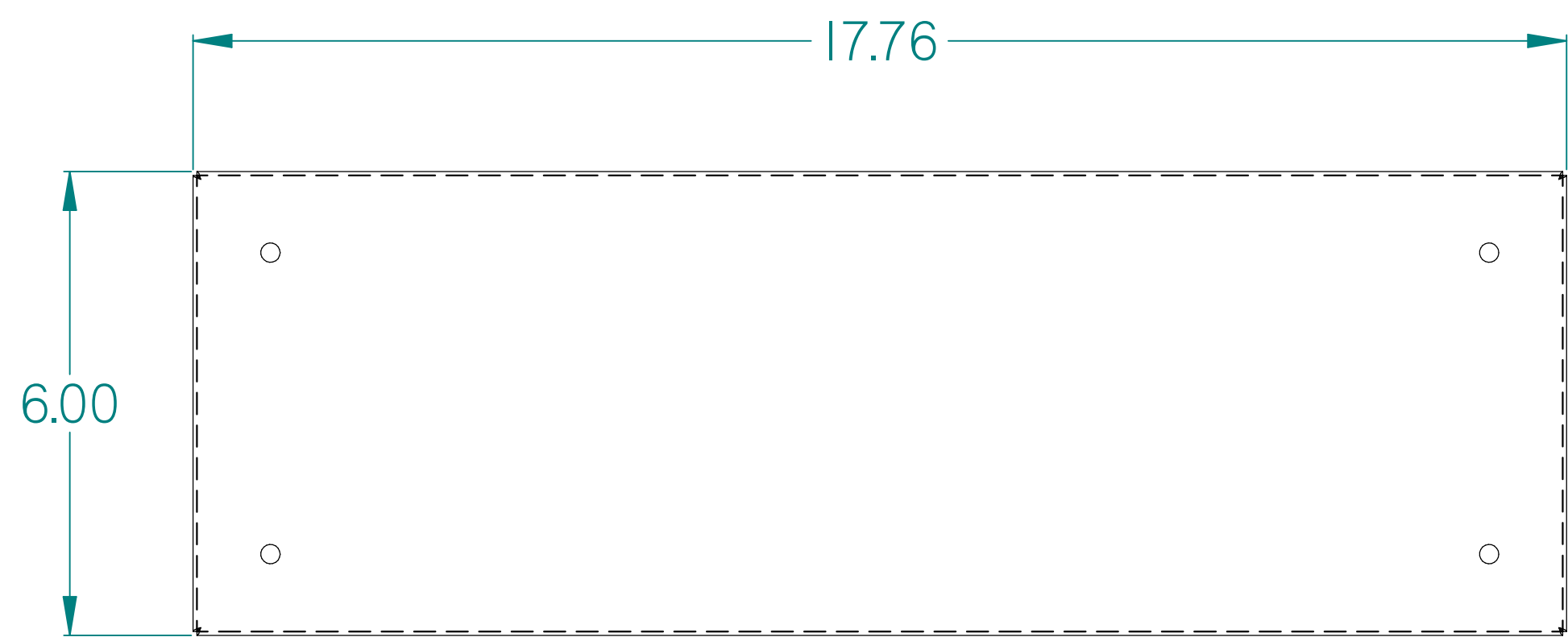
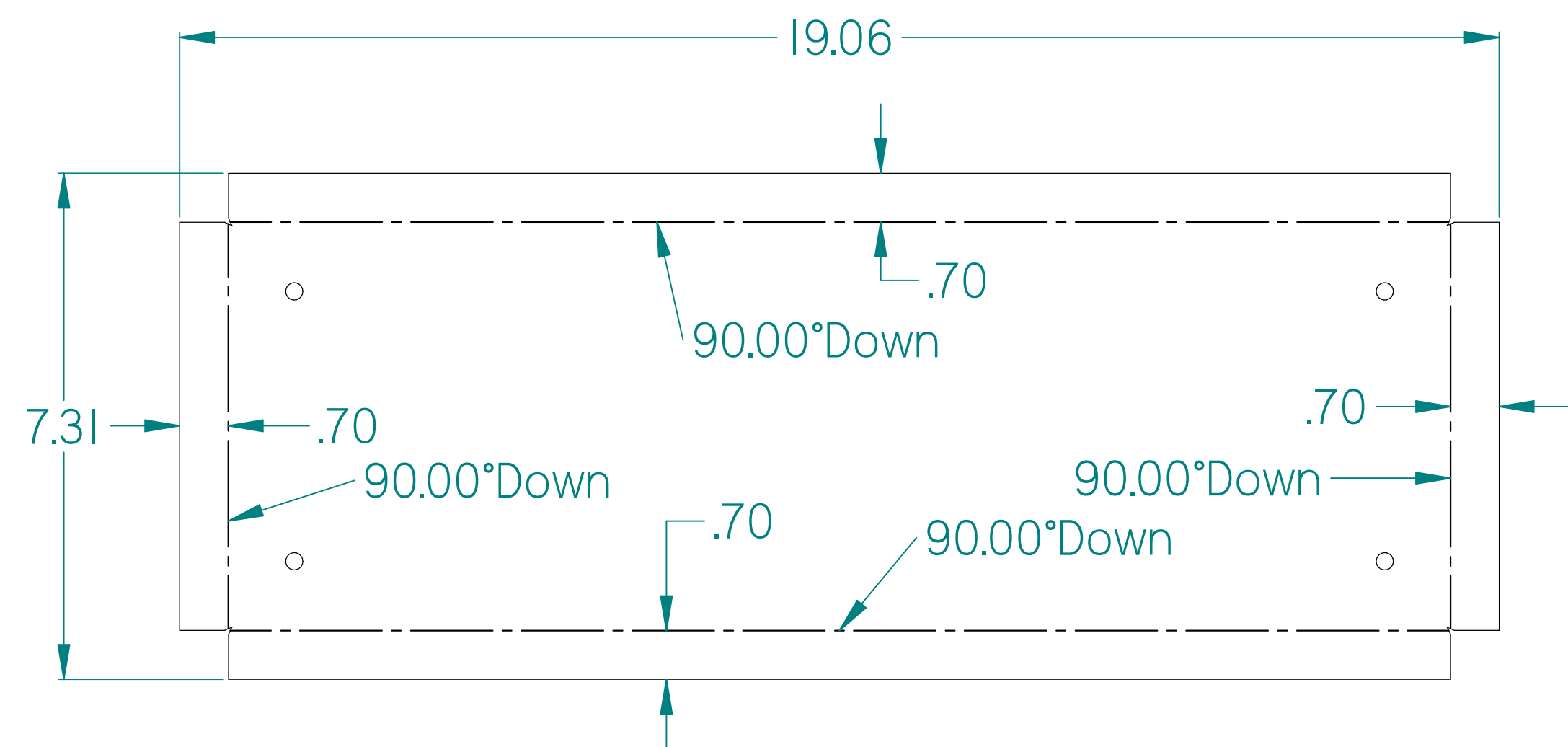


Item Number	File Name (no extension)	Material	Gage	Quantity
1*	CRD-316-1620-IE-SK- Fill corner	Stainless Steel, 316	16 gage	2

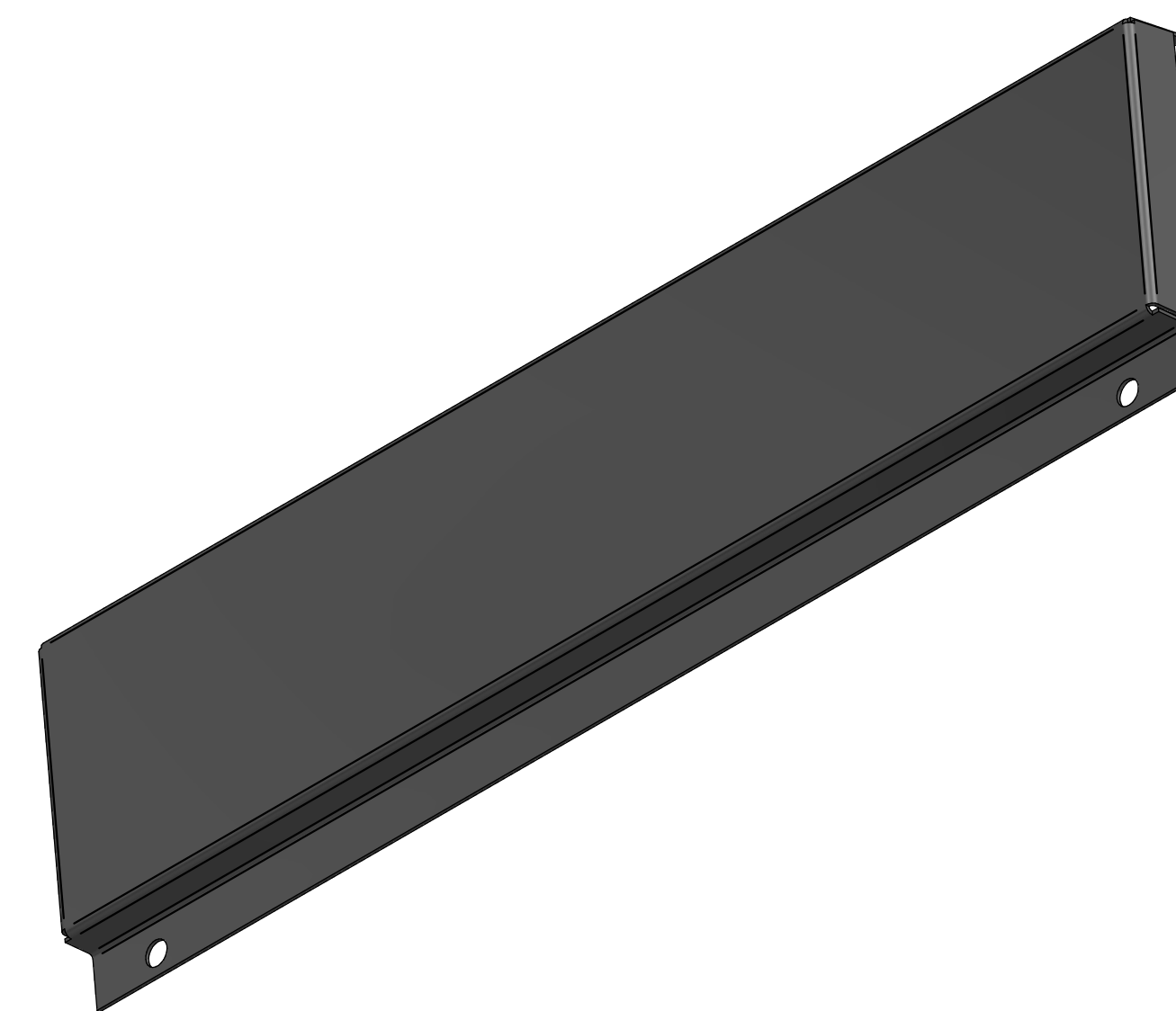
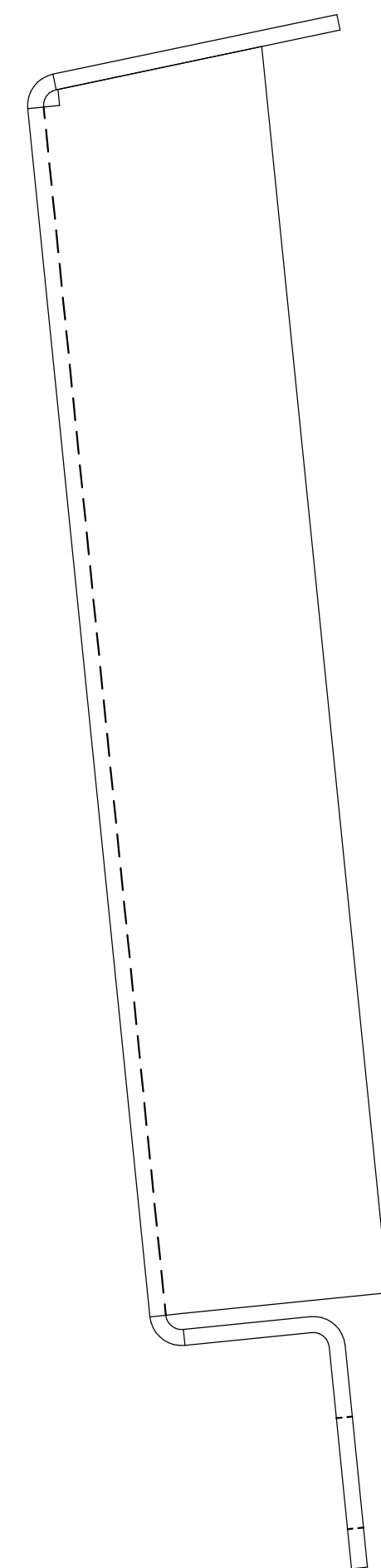
DEBURR ALL EDGES ROUTER SUPERFINISH PRINT UNLESS OTHERWISE SPECIFIED DIMENSIONS ARE IN INCHES ALL ANGLES ARE 90°	316ss	FINISH	#4 polish
TOLERANCES UNLESS OTHERWISE SPECIFIED	DATE	8/23/2019	ORDER NAME
XX ± .002	DRAWN BY	wkidd	CRD-316-1620-IE-SK
XX ± .005	APPROVED		PART NO.
XX ± .010			
XX ± .015			
XX ± .020			
XX ± .025			
XX ± .030			
XX ± .035			
XX ± .040			
XX ± .045			
XX ± .050			
UNLESS OTHERWISE SPECIFIED ALL DIMENSIONS ARE ± .005 DO NOT SCALE DRAWING	SHEET	7 OF 11	REV. 2



Item Number	File Name (no extension)	Material	Gage	Quantity
1*	CRD-316-1620-IE-SK- back plates	Stainless Steel, 316	18 gage	2

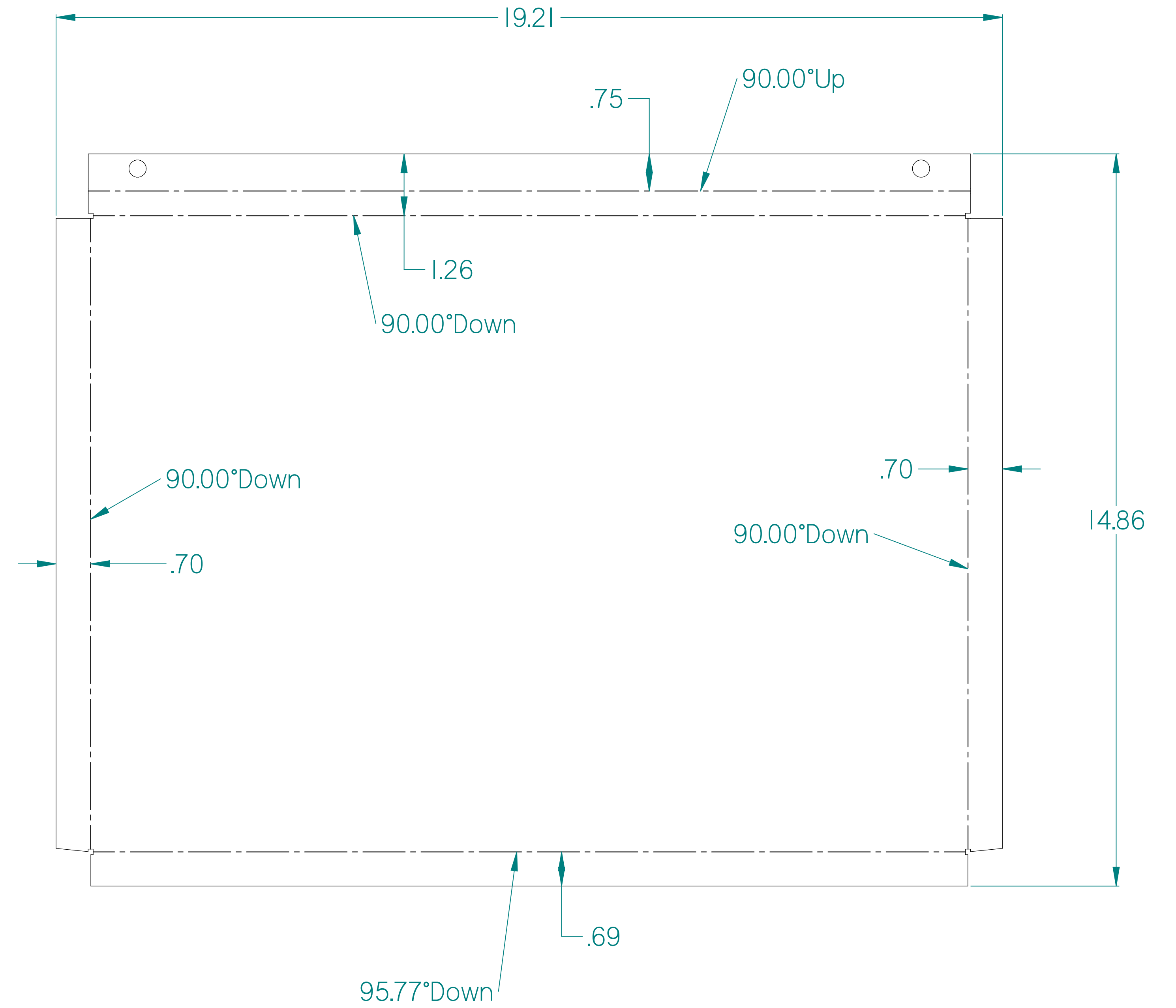
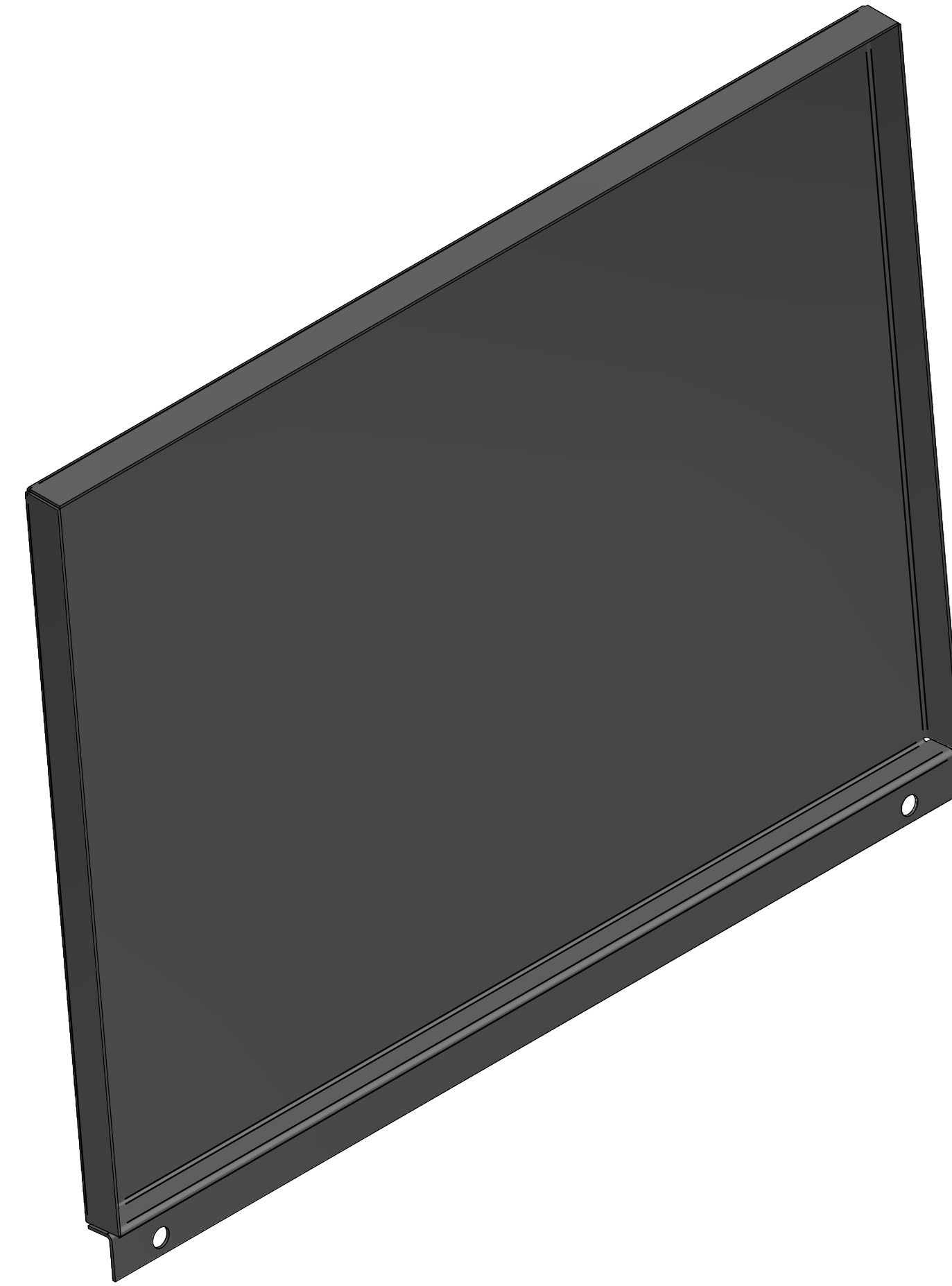
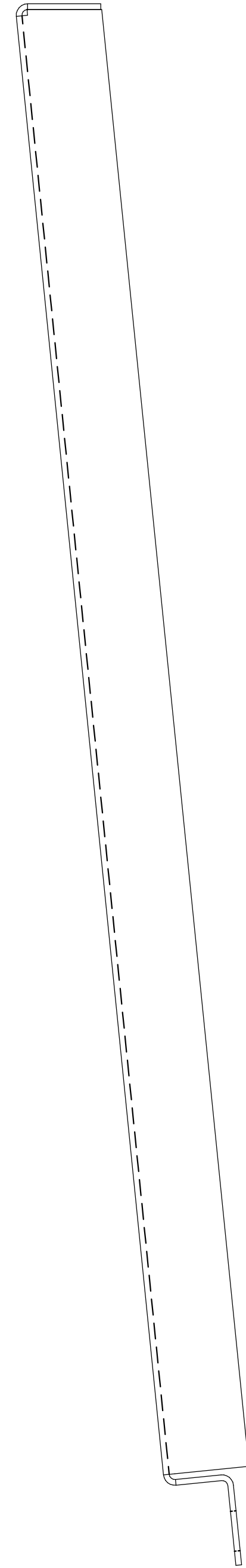


Item Number	File Name (no extension)	Material	Gage	Quantity
1*	CRD-316-1620-IE-SK- door bottom	Stainless Steel, 316	18 gage	1

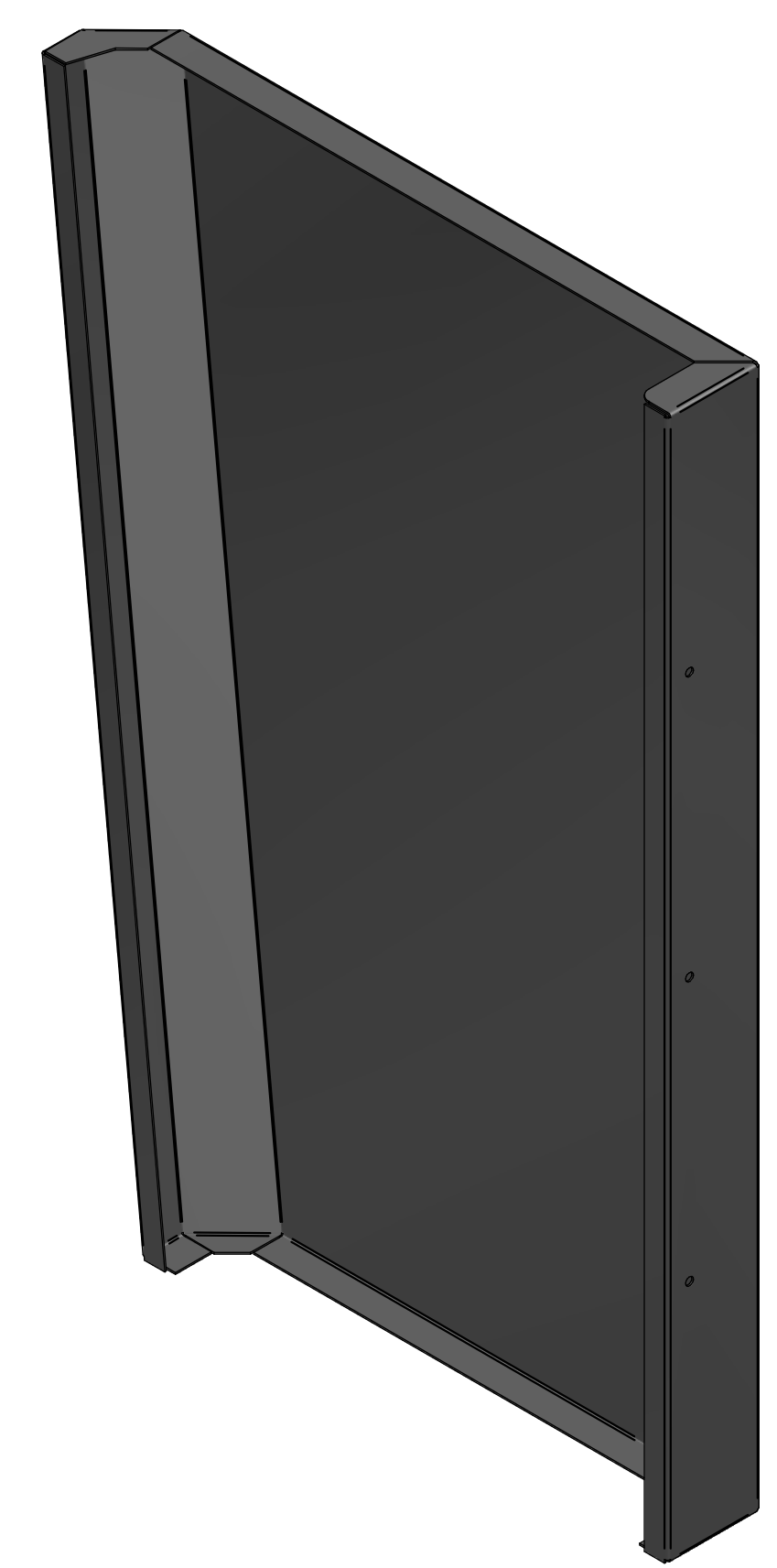
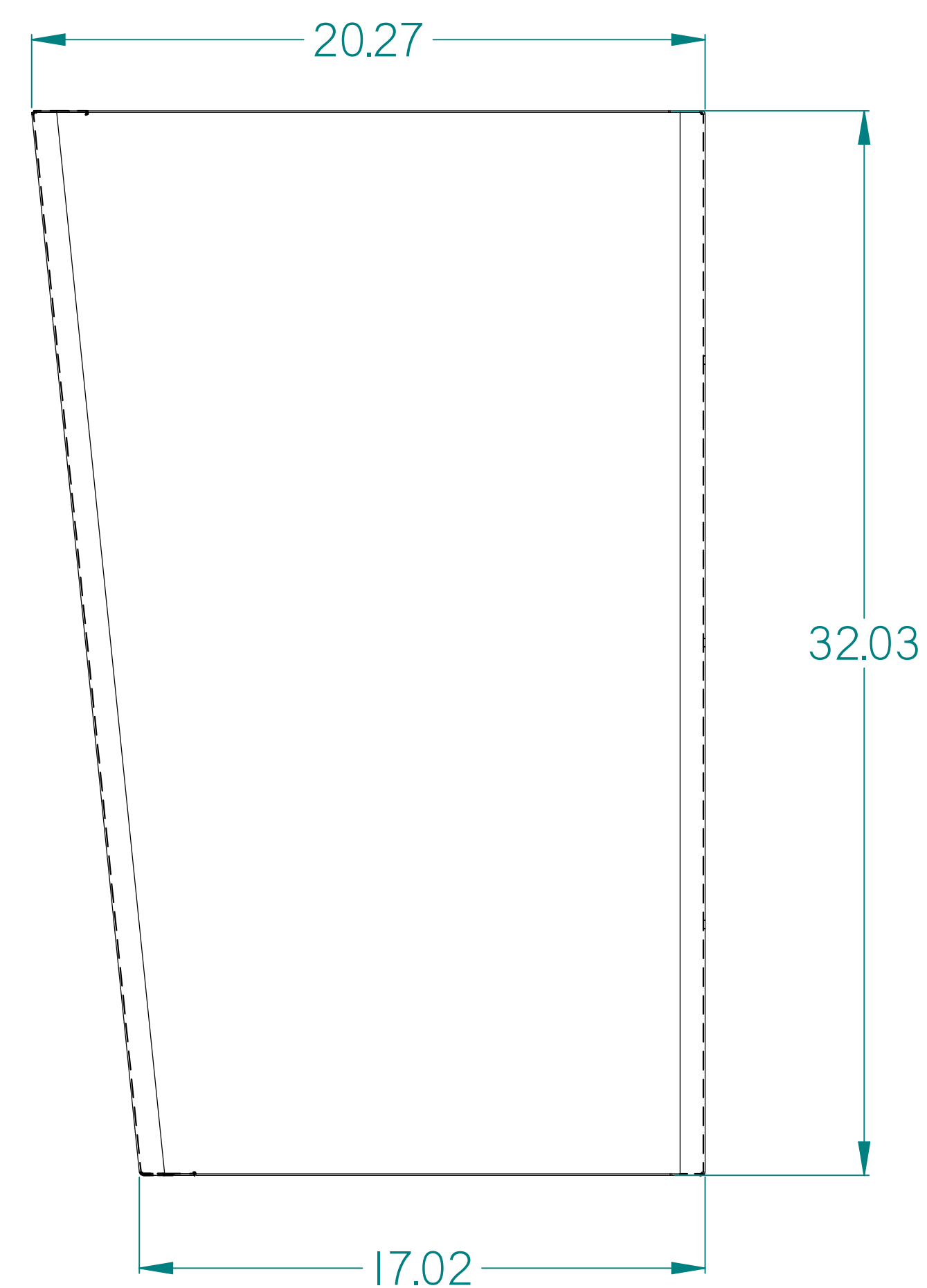
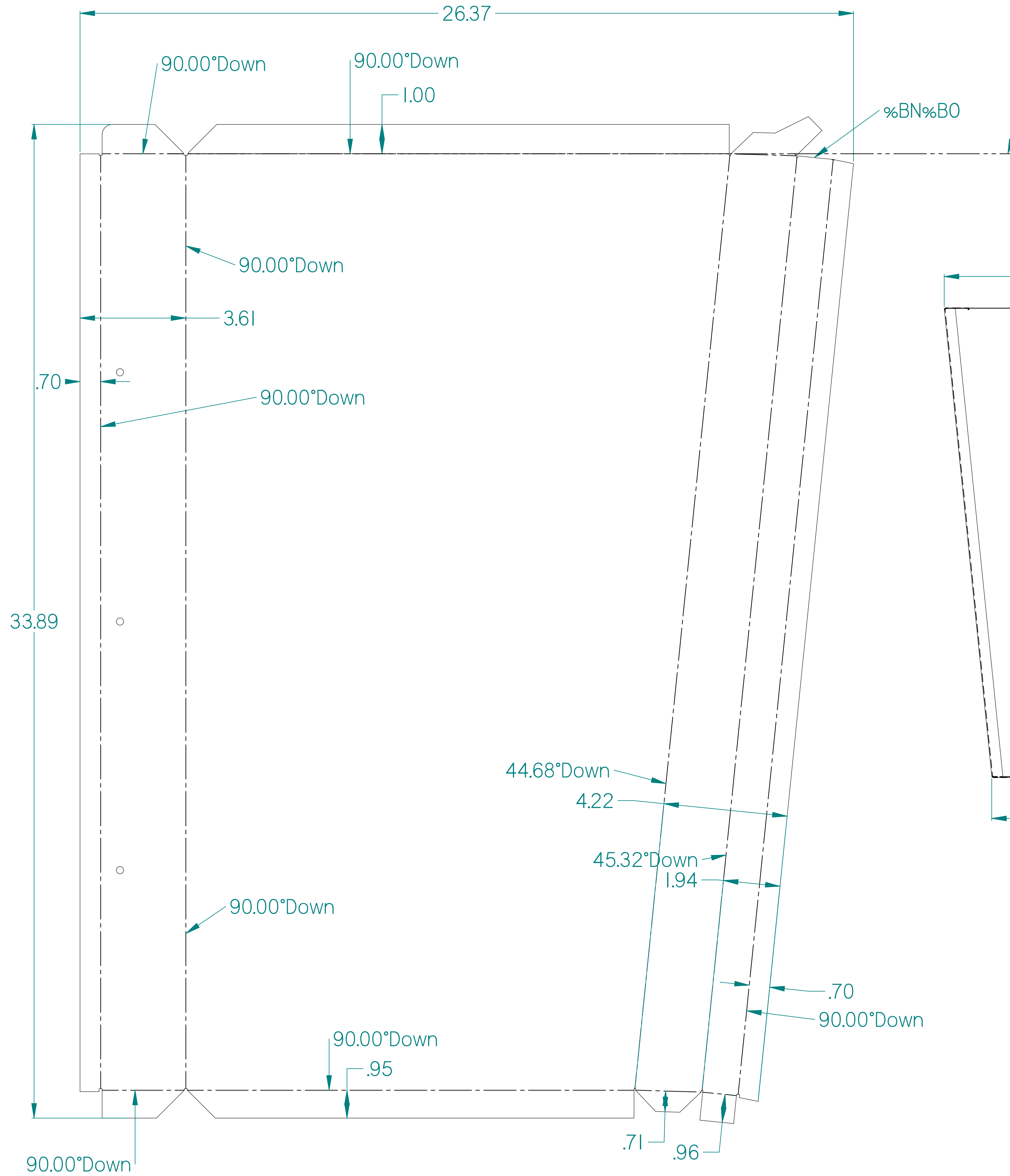


DEBURR ALL EDGES ROUTER SUPERCEDES PRINT UNLESS OTHERWISE SPECIFIED DIMENSIONS ARE IN INCHES ALL ANGLES ARE 90°	316ss	FINISH	#4 polish
DATE	8/23/2019	ORDER NAME	CRD-316-1620-IE-SK
DESIGNED BY	wkidd	APPROVED	
DECIMALS	XX = .002	XX = .002	XX = .002
TOLERANCES	XX = .002	XX = .002	XX = .002
UNLESS OTHERWISE SPECIFIED ALL DIMENSIONS ARE .002 DO NOT SCALE DRAWING	8 OF 11	SHEET	REV. 2

Item Number	File Name (no extension)	Material	Gage	Quantity
1*	CRD-316-1620-IE-SK- door top	Stainless Steel, 316	18 gage	1



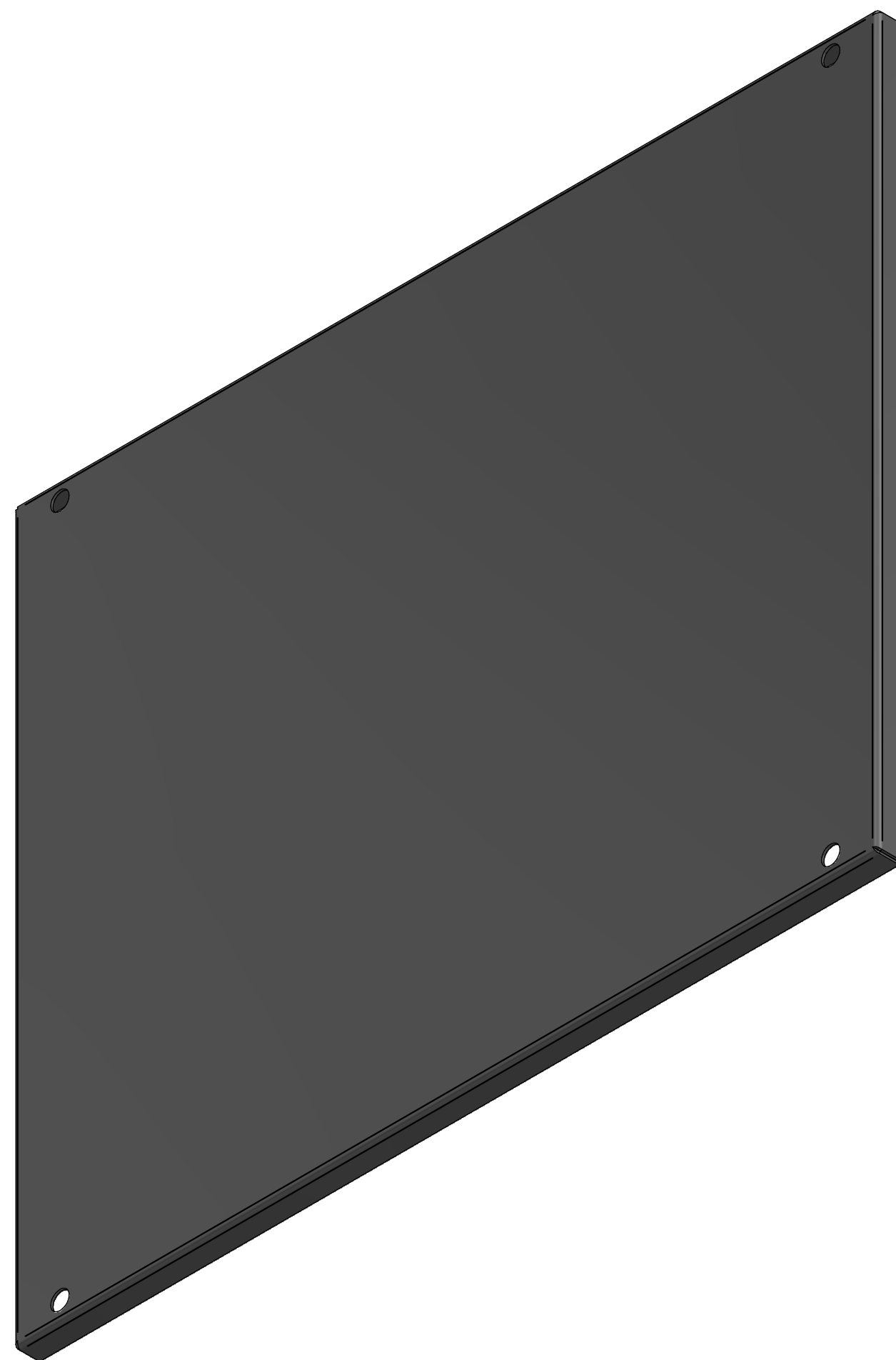
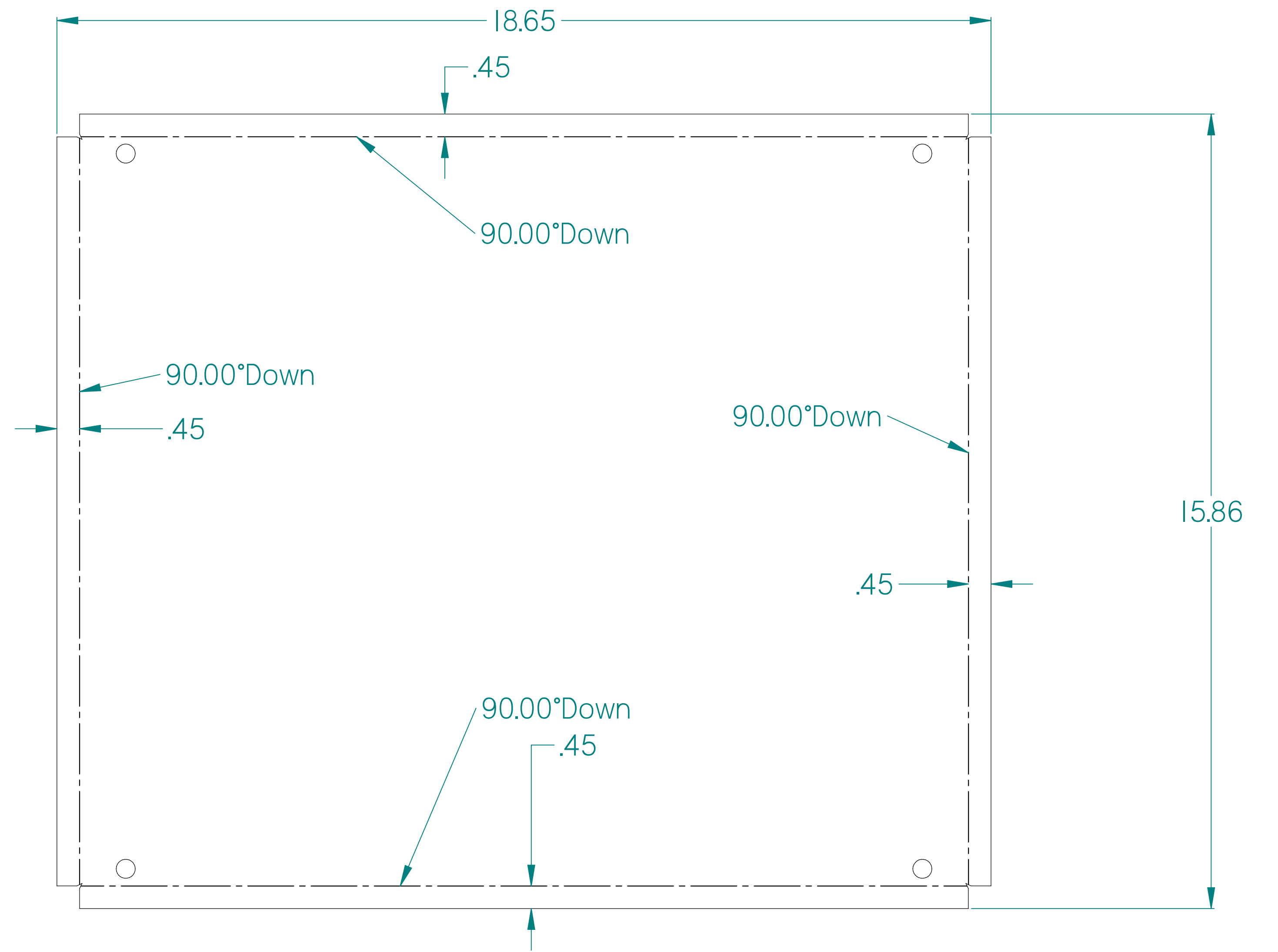
<small> DEBURR ALL EDGES ROUTER SUPERFINISH PRINT UNLESS OTHERWISE SPECIFIED DIMENSIONS ARE IN INCHES ALL ANGLES ARE 90° </small>	<small> FINISH: 316ss POLISH: #4 polish DATE: 8/23/2019 DRAWN BY: wkidd APPROVED: </small>	<small> ORDER NAME: CRD-316-1620-IE-SK PART NO.: </small>	<small> REV. 2 SHEET 9 OF 11 </small>
---	--	--	--



CRD-316-1620-IE-SK- left side body	Stainless steel, 316	0.050 in	as shown mirrored
------------------------------------	----------------------	----------	-------------------



<small> DEBURR ALL EDGES ROUTER SUPERFINISH PRINT UNLESS OTHERWISE SPECIFIED DIMENSIONS ARE IN INCHES ALL ANGLES ARE 90° DECIMALS . = .000 ** = .010" XX = .002 * = .010" UNLESS OTHERWISE SPECIFIED ALL DIMENSIONS ARE TO CENTER DO NOT SCALE DRAWING </small>	<small> 316ss #4 polish 8/23/2019 wkidd </small>	<small> ORDER NAME CRD-316-1620-IE-SK PART NO. - </small>	<small> REV. 2 </small>
---	---	--	--



Item Number	File Name (no extension)	Material	Gage	Quantity
1	CRD-316-1620-IE-SK-door	Stainless Steel, 316	18 gage	1



<small> DEBURR ALL EDGES ROUTER SUPERFINISH PRINT UNLESS OTHERWISE SPECIFIED DIMENSIONS ARE IN INCHES ALL ANGLES ARE 90° DECIMALS: .0004 .0008 .0015 .0025 .0050 .0100 .0150 .0200 .0300 .0400 .0500 .0600 .0700 .0800 .0900 .1000 .1250 .1500 .1750 .2000 .2500 .3000 .3750 .4500 .5000 .6250 .7500 .8750 1.0000 1.2500 1.5000 1.7500 2.0000 2.5000 3.0000 3.7500 4.5000 5.0000 6.0000 7.0000 8.0000 9.0000 10.0000 UNLESS OTHERWISE SPECIFIED ALL DIMENSIONS ARE ±.005 DO NOT SCALE DRAWING </small>	<small> PART: 316ss FINISH: #4 polish DATE: 8/23/2019 DRAWN BY: wkidd APPROVED: </small>	<small> ORDER NAME CRD-316-1620-IE-SK PART NO. SHEET 11 OF 11 </small>	<small> REV. 2 </small>
--	--	---	---