

SMRT BLUETOOTH WIRELESS 0-10V DIMMING ECONOMY PIR CONTRACTOR KIT

SMRT-DIM-KIT-WIRELESS-PIR-BT

SPECIFICATIONS



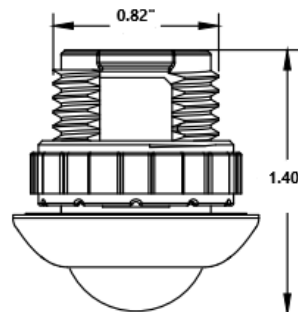
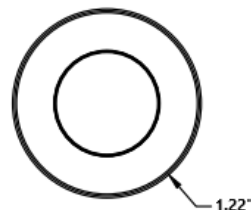
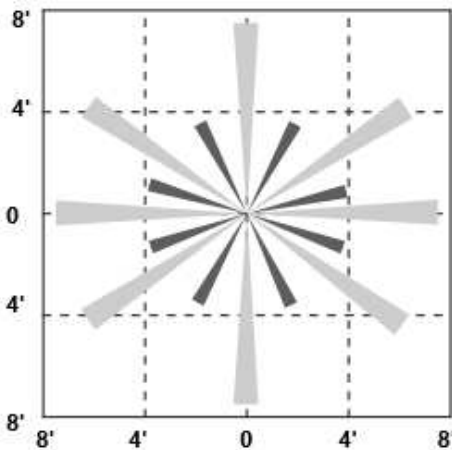
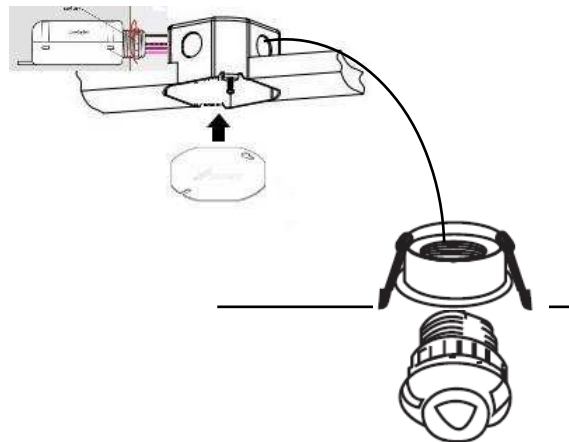
FEATURES

The SMRT-DIM-KIT-WIRELESS-PIR-BT Bluetooth Wireless 0-10V Dimming Economy Contractor Kit is designed with the Electrical Contractor and Electrical Distributor in mind. It gives you an economically priced, feature rich product offering. It truly is "grab n go". Everything the Contractor needs in one box. Galvanized junction box with cover for the Power Pack, Wire Nuts, Battery for the Wireless Wall Switch, 10 amp Bluetooth, 0-10V Power Pack or Zone Controller, White PIR Occupancy/Vacancy/Daylight Harvesting Ceiling Sensor, Sensor Holder, White Wireless 3 Button Wall Switch with ON/OFF and Raise/Lower Functions, with Faceplate. For the Distributor, no more browsing through catalogs or your computer to match the right sensor with the right power pack and the right wall switch. We've done it all for you, and it's all in one box, ready to supply your Electrical Contractor! Configure and control your lights via the free Bluetooth App. Don't want to use the App? We offer remote or on-site start up as well for a small fee.

WIRING / MOUNTING / DETAILS

Power Pack / Sensor Installation

Mount Power Pack to the knock out in the side of the provided galvanized octagonal 4" junction box, securing mounting nut to the power pack. Wire black and white wires from both devices to power, 120V or 277V. Wire the red wire from the power pack, to the lighting load. Bring in the violet and pink low voltage wires from the light fixture to the violet and pink low voltage dimming wires on the power pack. The yellow, brown, blue and pink low voltage wires with the quick connect are to snap in to your PIR, motion / daylight harvesting sensor. If the sensor is not being used, disregard these low voltage wires. Secure the junction box plate to the 4" junction box. Pair the wireless wall switch to the system by following the instructions below.



Power Pack

Input voltage; AC 120V/277v

Frequency: 60 Hz

Input Current: 10 Amp

Output Voltage: AC 120V/277V

Output Current: 10 Amp

Output Power: 1,200W - 2,700 W

Dimming: Class 2, 0-10V DC 10mA Max

Sinking Current: 10mA Max

Bluetooth Transmit: 200' Max

Radio Frequency: 2.4GHz +/- 75 MHz

Bluetooth Version 4.2

Indoor Use Only

Plenum Rated

Sensor:

Ceiling Mount

Connects to Power Pack by low voltage cable with quick connect

Passive Infrared (PIR)

Occupancy/Vacancy/Daylight Harvesting

Wall Switch:

Wireless 3 Button Wall Switch

White

Off / On / Raise / Lower

Battery Powered

Screw less Faceplate Included

Other:

4" Galvanized Octagon Junction Box with Cover for Power Pack

Wire Nuts

Mounting Nut

Battery for Wall Switch

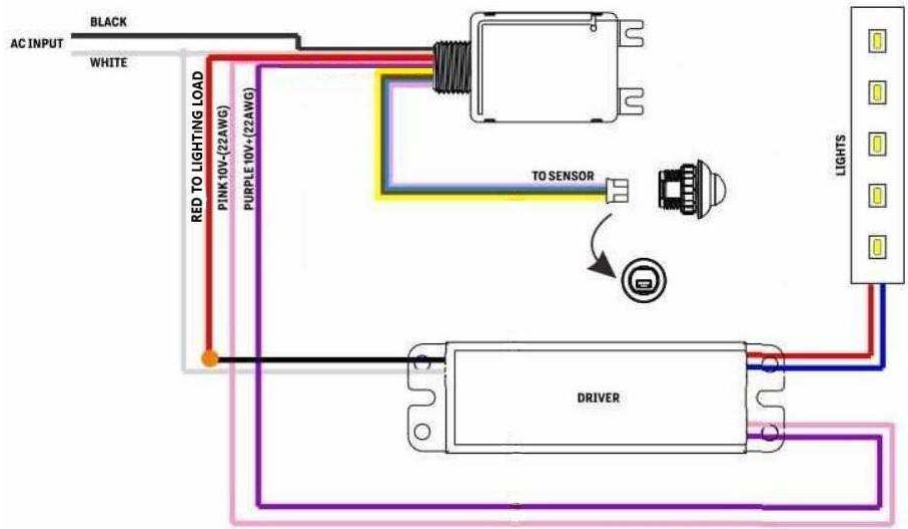
Configure and Control with Free App

UL Listed

DLC Approved

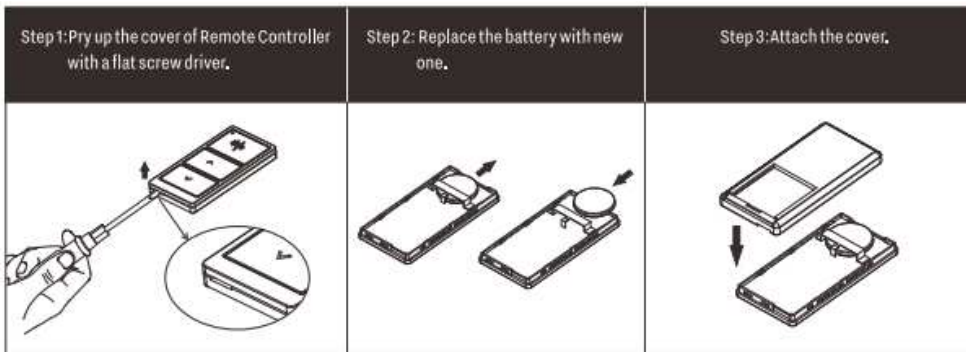
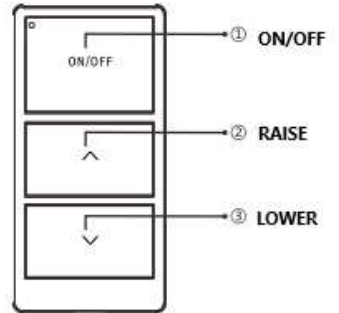
Lifetime Limited Warranty

WIRING DIAGRAM FOR: POWER PACK CEILING SENSOR

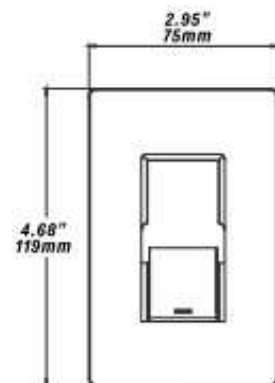
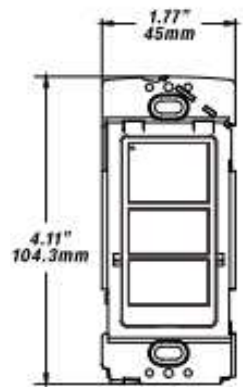
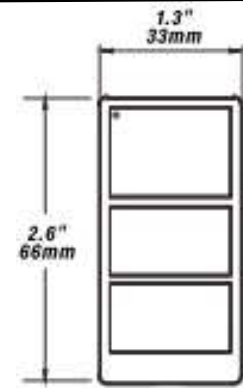
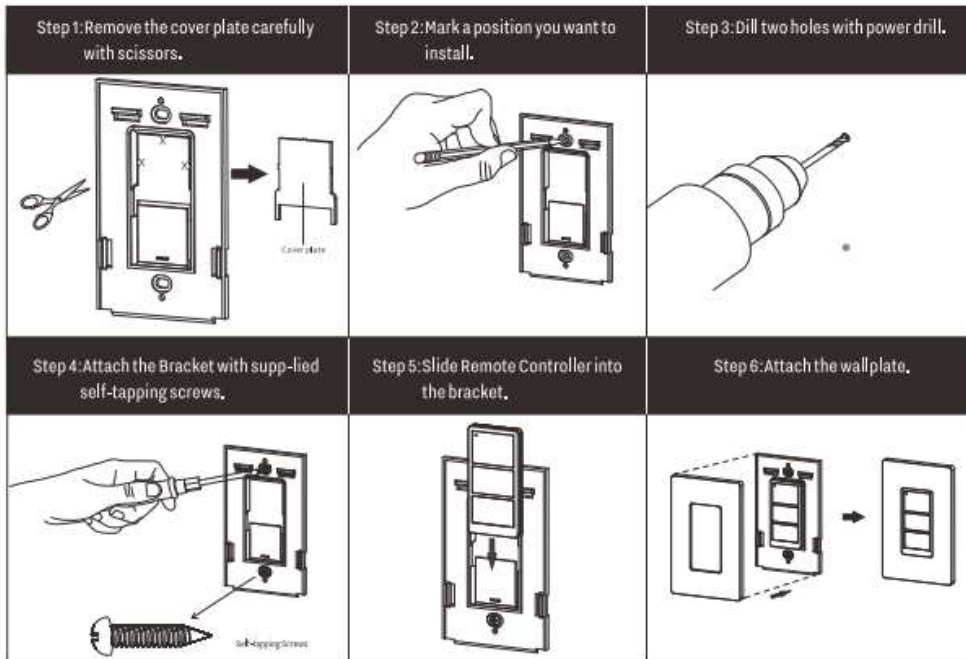


WIRELESS 3 BUTTON WALL SWITCH INSTRUCTIONS

- 1) Install 1 CR2032 Battery
- 2) Press the "ON/OFF" and the "RAISE" buttons together for 2 seconds to enter pairing mode. This switch can now be paired in the next 30 seconds.
- 3) In the SMRT App, "Switch" page, click to add switch.
- 4) Select the light/light group to be controlled by this switch



Wall Surface Installation



CR2032 Battery will last 5 or more years depending on presses. When battery power is low, press any button and a red LED indicator light will flash.