

Nova



15-MONTH
Extended Warranty
Activate Within 14 Days

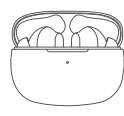
Tranya Nova ANC Wireless Earbuds



V20230526

Email: support@tranya.com
tranya.com/pages/register-product

PACKAGE LIST



Wireless Earbud x2
Magnetic Charging Case x1



User Manual x1



Ear Tips x3 (S/M/L)

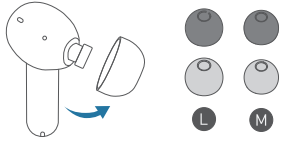


Type-C Charging Cable x1

1

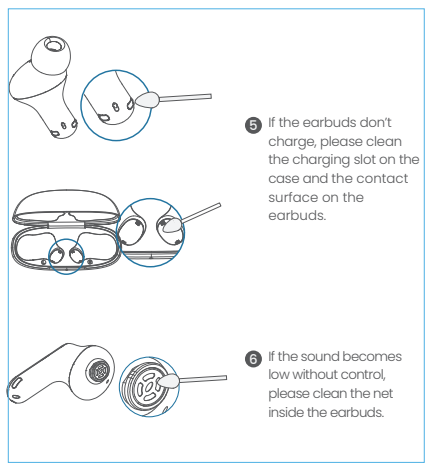
IMPORTANT NOTES

- 1 Register your product on tranya.com to get an EXTRA three-month warranty for free.
- 2 Before using the Tranya Nova wireless earbuds, please charge both the case and earbuds.
- 3 We provide three pairs of rubber eartips. Please choose the best fit for you.



- 4 If both earbuds don't sync together, please reset the earbuds.

2



3

TOUCH CONTROL

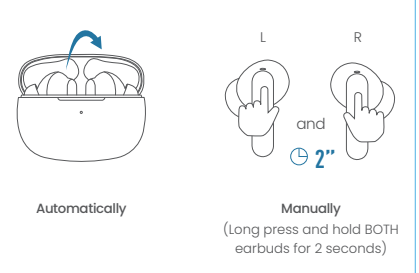
- **Play/Pause**
Tap once (L or R)
- **Answer a call**
Tap once (L or R)
- **End a call**
Tap twice (L or R)
- **Volume down/up**
Tap 3 times (L/R)
- **Noise Cancelling/Ambient Sound/Normal**
Press and hold for 15 second (L or R)
- **Previous/Next track**
Tap twice (L/R)
- **Reject a call**
Press and hold for 15 second (L or R)



Note: You can customize the touch control function in the Tranya Audio APP and set the pressing times of different functions as you like.

4

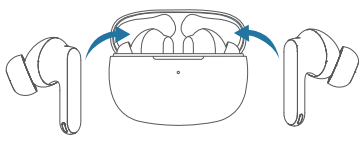
POWER ON



Note: When the earbuds are disconnected, they will automatically turn off after 10 minutes. You can manually turn on the earbuds at this time.

5

POWER OFF

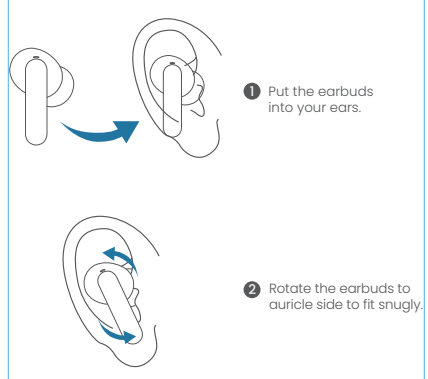


Automatically

Note: When the charging case is at low battery or out of power, the earbuds will not automatically power on/off, please fully charge the case.

6

WEARING



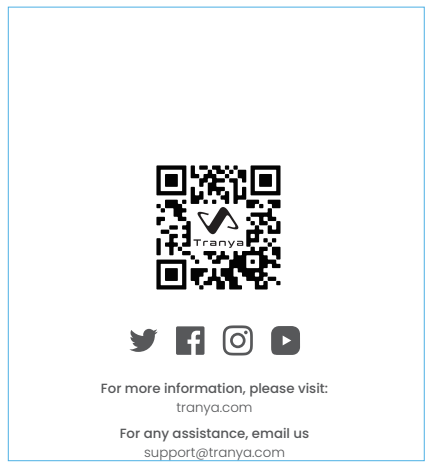
7

CONNECT THE EARBUDS

- 1 Power on the earbuds and turn on the Bluetooth in your phone.
- 2 Select "Tranya Nova" and confirm. If you can't find "Tranya Nova" in your Bluetooth list, you can long press the button on the case for 2 seconds until the indicator flashes.

Note:
(1) You can rename your Tranya Nova earbuds in the "Tranya Audio" APP.
(2) Tranya Nova earbuds can connect to 2 different devices at the same time.

8



MULTIPOINT CONNECTION

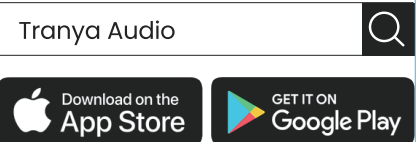
- 1 Turn on the Bluetooth of device 1, then find "Tranya Nova" on device 1 and connect to it.
- 2 If you want to pair with two devices simultaneously, please turn off the Bluetooth of device 1 first, then turn on the Bluetooth of device 2; find "Tranya Nova" on device 2 and connect to it.
- 3 Finally, turn on the Bluetooth of device 1 and device 2, the Tranya Nova will stay connecting to your both devices.

Note: When you want to switch to device 2 while using device 1, please pause the audio playback of device 1 first.

9

INSTALL TRANYA AUDIO APP

Open your App store or Google play and search "Tranya Audio" to install it.

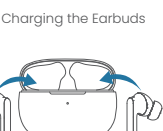


10

CHARGING

- 1 Power Display
 - 50%-100% (Green light)
 - 10%-50% (Yellow light)
 - 5%-10% (Red light)
- 2 Charging the Earbuds

Fully Charged: The power display of earbuds on the Tranya Audio APP is 100%.

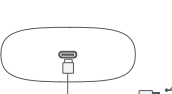
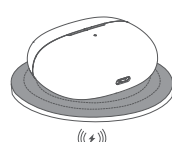


11

Charging the Case

- 3 Charging the Case
 - a. Charge it with a wireless charging pad (Not included).
 - b. Charge it with the included Type-C cable.

Charging: Indicator light is flashing.
Fully charged: The green light remains on.

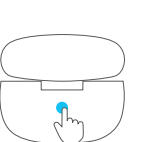


12

HOW TO RESET THE EARBUDS

If your earbuds stop syncing with each other, please follow the below steps to reset the earbuds:

- 1 Put 2 earbuds back to the charging case.
- 2 Open the case, then long press and hold the button on the back of the charging case for 8 seconds until you see the red indicator lights 2 seconds.



13

FAQ

Q: Why does signal interruption occur in some places, such as along the railway and the airport?

A: There are usually lots of underground cable lines along the places mentioned above, which might cause electromagnetic interference and result in the signal interruption.

Q: My earbuds don't charge, what can I do?

A: Please try to follow the below steps:

1. Clean the charging slot on charging case.
2. Clean the charging connector on earbuds.

14

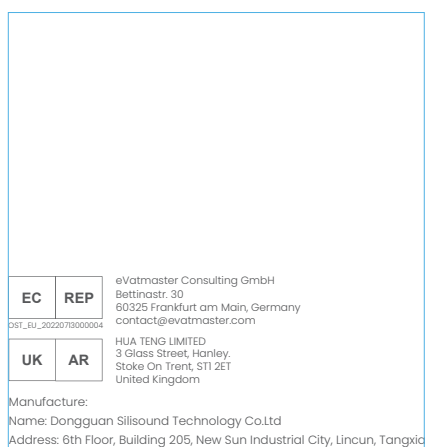
Q: Why won't my earbuds power on/off automatically?

A: The earbuds will not power on/off automatically when the case is at low battery or out of power. Please recharge the case.

Q: Will the Bluetooth mouse cause the signal interference?

A: Perhaps. When your Bluetooth mouse and earbuds are connected to the same device, it might happen.

15



16