

Get Started

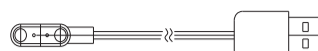
Package list



Smart Watch x 1

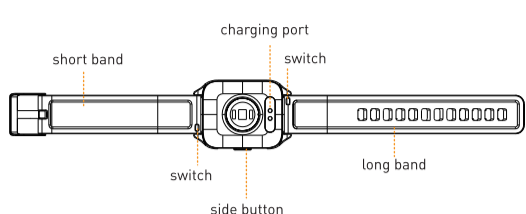


User Manual x 1



Charging cable x 1

Replace the band



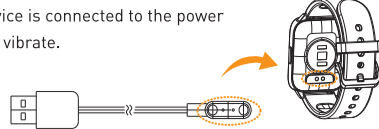
If you buy new bands and want to replace, firstly, flip the switch and take out the wrist band, then pick up the band you like, and flip the switch into the end of the watch until you hear a click and then snaps into place.

Note: Pay attention to the position of the long and short band and the display screen, do not install them upside down.

Charge your watch

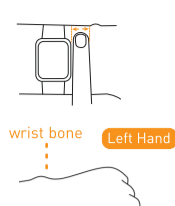
Connect the USB-charging cable with the watch according to the picture.

When the device is connected to the power supply, it will vibrate.



Wearing

Wear the device with a finger's distance from the wrist bone and adjust the tightness of the wrist band to a comfortable position.

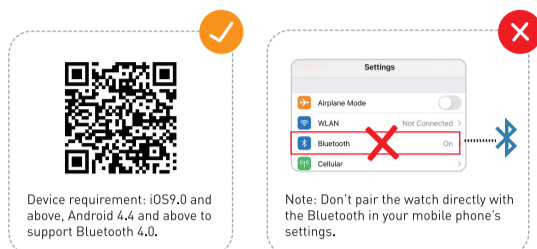


Power on/off

1. Long press the side button for 4-5 seconds to power on. Or charge it to power on.
2. Switch to the Shutdown interface, and press it to power off. Or press the side button for 4-5 seconds in the main interface to power off.

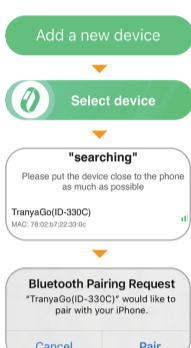
Install the App

1. Open your APP store and search "GloryFit" to install.
2. Or scan the following QR codes to install "GloryFit". The QR code can be found in the Setting.



Device connection

1. Turn on the Bluetooth in your phone;
2. Open the "GloryFit" in your phone;
3. Click "Device";
4. Click "Add a new device";
5. Click "Select device";
6. Select the product model - TranyaGo;
7. Click "Pair" to complete connection.



Note: If you can't find "TranyaGo" in step6, please check whether the device has been selected in the Bluetooth list of your mobile phone. If so, please click "Ignore TranyaGo" and search again.

The GloryFit would save the Bluetooth address of your smart watch after the above steps. Once the GloryFit is running, the watch will be connected automatically next time.

Operation

1. Raise your hand or press the side button to light up the screen.
2. The screen will turn off without operations in 5 seconds by default. You can modify this default value in the GloryFit.
3. The heart rate monitoring function is on by default. You can turn it off in the GloryFit.
4. Press the side button at any time to return back.

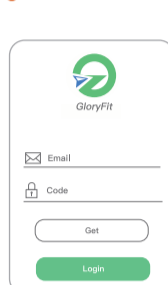
Data synchronism

The watch can store 7 days of off-line data, and you can synchronize the data on the App homepage manually. The more data, the longer the synchronization time is, and the longest time is about 2 minutes.

App functions and settings

Personal information and exercise goals

1. Open the App GloryFit to set your personal information.
2. Setting your avatar, name, gender, age, height and weight, which can help to increase the accuracy of the monitoring data.
3. Set your daily exercise goals.



App setting

Reminding	GloryFit setting	Display	Operating	Interface
Call	Opened When the phone... Opened When the phone...	The name or numbers of the incoming call.	You can press and hold the "Object" for 2 seconds to hang up the call.	
Message	Opened Phone has a...	Display the content up to 160 characters for IOS or 80 characters for Android per message.	Click to view the message.	
App	YouTube Snapchat Facebook	Display the content up to 160 characters for IOS or 80 characters for Android per message.	Click to view the message.	

Reminding	GloryFit setting	Interface	Reminding	GloryFit setting
Sedentary reminder	40 mins How long it... 08:00 The start time 19:00 The end time Undisturbed 12:00 noon to...		Light Up	When the hand is raised, the screen will automatically light up Opened
Alarm clock	14:47 16:35		More Settings	Shake To Take Picture Find Device Display Timeout 24-Hour Time Device Language

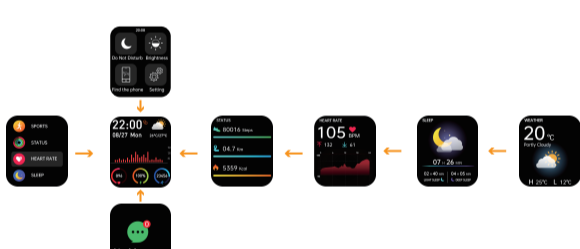
Do Not Disturb: If the Do Not Disturb mode is on, the screen will not light up when you raise your hand, as well as brakes vibrations and message push will be off. Out of the time range, you can also set Vibration mode off or Message off.

Basic

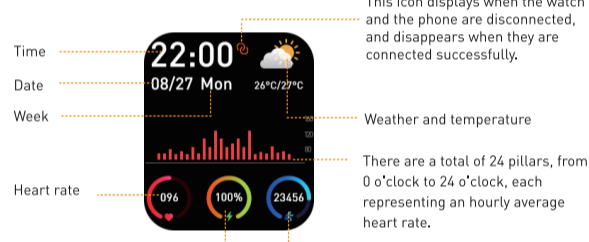
Basic navigation

The home screen is the clock.

1. Swipe down to see the quick settings, such as Do Not Disturb, Brightness, Find the Phone, Setting.
2. Swipe up to see the notifications.
3. Swipe right to see the Apps on your watch.
4. Swipe left to see the shortcut interfaces, such as Status, Heart rate, Sleep, Weather.
5. Press the side button to return.



Main page function



Switch main interface



1. Long press the main interface for 4-5 seconds to switch.
2. Or [Setting]-[Dial] to switch.

Note: You can also choose more interfaces in the Dash Board of GloryFit.

Menu list

Sports interface

Switch to the Sports interface, press the screen to enter the specific Sports interface. Press the side button to pause, you can choose whether to continue or exit.



Status interface

Switch to the Status interface to check the steps, distances and calories. The distances and calories are calculated based on the current walking steps, the height and weight set in the App individually.

Heart Rate interface

Switch to the Heart Rate interface, click the screen to view the heart rate data.

Note:

1. The heart rate monitoring is enabled by default. If you don't want this function, you can turn it off in the "GloryFit" App.
2. If the heart rate monitoring function is on, the green light on the back of the watch will keep flashing.
3. The sensor should be close to the skin to avoid the effect from external light on the accuracy.
4. When you find that the heart rate data is inaccurate, you can restart the watch to correct it.

Sleep interface

Switch to the Sleep interface and check the sleep status. When you fall asleep, the watch will determine to enter the sleep monitoring mode automatically to calculate the length of your deep sleep/light sleep/awake time all night, and evaluate your sleep quality. You can only view sleep data on the App.

Note: The sleep date can only be recorded when you sleep with the watch.

Weather interface

Switch to the Weather interface, you can view the weather and temperature.

Music interface

You can play, pause or switch the songs playing in your cell phone.

Message interface

In the Message interface, click the main screen to view the message, slide the screen to turn the pages. Press the side button to exit.

More

Stopwatch: Switch to the Stopwatch interface, click to enter the timing interface.

Countdown: Switch to the Countdown interface, and click to choose the time you want to count down. You can customize the time at the bottom of the page. When the time is up, the watch will vibrate.

Flashlight: Switch to the Flashlight interface, and press the screen to turn on the flashlight.

Find the Phone: Switch to the Find the Phone interface and touch the icon, then the phone would ring.

Setting



Dial (Main interface): You can also press the main interface for 4-5 seconds to switch.



QR code: Scan the QR code to install the APP "GloryFit".

Precautions

1. Please avoid strong impact, extreme heat and exposure to the watch.
2. Please do not disassemble, repair or transform the device on its own.
3. The use of the environment is 0 degrees -45 degrees, and it is forbidden to throw it into the fire so as not to cause an explosion.
4. Please wipe off the water with a soft cloth and then the watch can be used for the charging operation, otherwise it will cause corrosion of charging contact point and charging incident may occur.
5. Do not touch the chemical substances such as gasoline, clean solvent, propanol, alcohol or insect repellent.

6. Please do not use this product in high pressure and high magnetic environment.

7. If you have sensitive skin or tighten the wristband, you may feel uncomfortable.

8. Please dry the sweat drips on the wrist in time. The strap has long contact with soap, sweat, allergies or pollution ingredients, which may cause skin allergy itching.

9. If it is often used, it is recommended to clean the wristband every week. Wipe with wet cloth and remove oil or dust with mild soap. It is not appropriate to wear a hot bath with a wristband. After swimming, please wipe the wristband in time so as to keep dry.

FAQ

Q: Can't find the smart watch when trying to select device on the GloryFit App setting.

A: 1. Make sure the smart watch is on and close to your phone;
2. Make sure the watch - "TranyaGo" is NOT on the Bluetooth list of your phones;
3. Make sure the smart watch is not connected to any other phones.
Search again and you would find "TranyaGo" in your GloryFit App.

Q: Is the watch waterproof?

A: It supports IP68 waterproof and dust-proof level (IP68 standard is 35 degrees below water, 1 meter below 30 minutes). Usually, you can wash your hands, take a cold shower, or wash car with the smart watch.
Note: But be sure not to enter the steam room with your watch. Such as sauna, hot spring, hot bath, etc.

Q: Why is the data of heart rate monitoring inaccurate?

A: To calculate your heart rate, Heart Rate Monitoring utilizes the LED lights to determine how much green and red light is being detected from the skin of your wrist. If you don't keep the watch close to your skin, there will be ambient light reaching into the sensor, which will affect measurement accuracy.

Q: Why can't I receive the message notification?

A: Android Phone:
Step 1: Be sure the watch is connected to the phone;
Step 2: Be sure the "GloryFit" App is running in your cell phones, and keep it running in the background;
Step 3: Be sure the watch is not on "Do Not Disturb" mode;
Step 4: Be sure the related reminders in the GloryFit App are on;

Note: Currently, the GloryFit App may be killed in the background for most Android Phones in every 10-15 minutes.
Regarding to a specific model of your phone, for example, pixel 5, you can google "how to keep APPs running in the background pixel 5".

iPhone:
Step 1: Restart the phone and reconnect the smart watch;
Step 2: There will be a popping up "Bluetooth pairing request" and clicking "Pair";
Step 3: Be sure the "GloryFit" App is running in your cell phones, and keep it running in the background;
Step 4: Be sure the watch is not on "Do Not Disturb" mode;
Step 5: Be sure the related reminders in the GloryFit App are on.

Basic parameter

Type	1.69 Inch Full Touch Smart Watch	Battery Type	Li-Polymer
Display Size	1.69Inch	Battery Model	372026
Weight	54.5g	Battery Capacity	200mAh
Length	25.5cm	Battery Voltage	DC 5.0V
Waterproof Level	IP68	Battery Power	0.76Wh
Material	TPU, PC+ABS	Package	Device, Manual, Charging cable