

USER MANUAL



Model Number: URB10W

Customer Support

Hotline: 1-833-275-3482

Email: Support@explorerbear.com

Note: The batteries for this series of refrigerators are optional. Solar accessories, and battery accessories need to be purchased separately. Please read the instruction manual carefully before use.

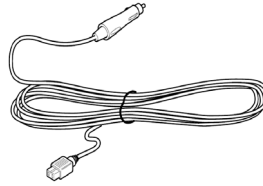
1. OPERATING INSTRUCTIONS

- Before using the refrigerator for the first time, please clean the inside and outside of the refrigerator with a damp cloth.
- Do not store corrosive liquids inside the refrigerator.
- If the refrigerator is not going to be used for an extended period, please disconnect the power and remove the battery.

Choosing the refrigerator's power source:

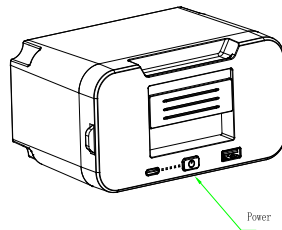
Direct Current Power Supply:

Use the cigarette lighter cable included with the product to connect to the 12/24V power supply in your vehicle.



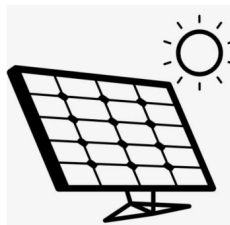
Battery Power Supply:

Insert the battery and turn on the battery power switch before using.



Solar Panel (PV):

Can be connected to the battery and charge the battery.



When using the refrigerator's built-in battery, turn on the battery power switch before using the refrigerator. Please read the "Battery User Manual" carefully when using a refrigerator with a battery. When using an adapter or solar panel to power the refrigerator, the battery will also be charged.

AC Usage Instructions:

When AC power is available, prioritize using an AC adapter for power supply.

Check the AC voltage range and connect the AC adapter to the AC power socket. Before going on a trip

or

outdoor activity, it is recommended to use an AC adapter to fully charge the refrigerator's battery. If the refrigerator has not been used for a long time, the battery may be over-discharged, and the device will

not

be able to start directly with the battery.

Car DC Power Usage Instructions:

Use the cigarette lighter cable included with the product to connect to the 12/24V power supply in your vehicle. Different vehicles may have different output voltages. If voltage protection causes an E1 error display, simply adjust the battery protection from H to M or L.

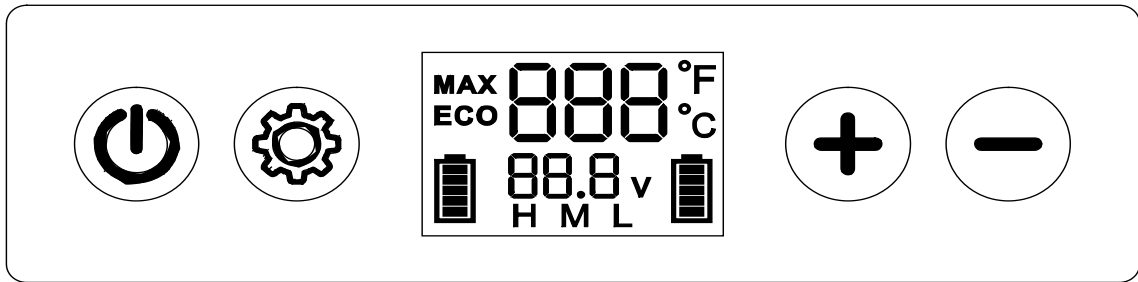
Battery Power Supply Instructions:

Insert the battery. Turn on the battery power switch before using. The refrigerator battery can be charged using an adapter, solar power, or by removing it and using a dedicated charger. Using an adapter or solar power while the refrigerator is in standby mode can speed up battery charging.

Solar Panel Usage Instructions:

Insert the solar charging cable into the refrigerator's "PV" port. The maximum solar input voltage is 31.5V. When using a solar panel to power the refrigerator, place the refrigerator in a shaded area to avoid direct sunlight causing overheating and malfunction. When connected, the battery icon on the display will flash, indicating the charging status. The charging input power should be higher than the refrigerator's working power (approximately 40-45W), otherwise, the battery will not charge. To ensure the solar charging power is higher than the refrigerator's operating power, it is recommended to use a solar panel with more than 90W

Displayed Buttons



Power On/Off:

In standby mode, press the "Power" button once to turn on the refrigerator. In the powered-on state, press the "Power" button once to turn off the refrigerator.

Temperature Setting:

In the powered-on state, press the "Set" button once, the preset temperature will flash. Press "+" or "-" to adjust the preset temperature up or down.

Temperature control range: **-4°F /-20°C~50°F /-10°C**. When flashing, press and hold "+" or "-", the setting value will be adjusted linearly at a rate of 4 degrees per second (no jumping, no flashing during the long press).

ECO/MAX Setting:

Press the "Set" button twice, ECO/MAX will flash (the selected mode flashes, default is MAX). Press "+" or "-" to switch between ECO and MAX.

Battery Protection Level Setting:

Press the "Set" button three times, L/M/H will flash (the selected mode flashes, default is H). Press "+" or "-" to switch between L, M, and H.

High level: H; Medium level: M; Low level: L.

Battery Protection	Level	12V	24V
	L	9.6V OFF; 10.9V ON	21.3V OFF; 22.7V ON
M	10.1V OFF; 11.4V ON	22.3V OFF; 23.7V ON	
H	11.1V OFF; 12.4V ON	24.3V OFF; 25.7V ON	

2. DAILY CLEANING AND MAINTENANCE

Cleaning Method:

Clean the refrigerator once a week by wiping the inside and outside surfaces with a damp, warm cloth. If it is too dirty, use a neutral detergent to wipe it down, then use a cloth rinsed with water and wrung out to wipe away any water stains.

Maintenance of Plastic Parts:

Take proper care of door seals and keep them clean. Try to avoid getting oil stains on them and prevent deformation. If oil (animal or vegetable) stays on the plastic parts inside the refrigerator for an extended period, the plastic may age, crack, or emit unpleasant odors. Therefore, develop a habit of regular cleaning.

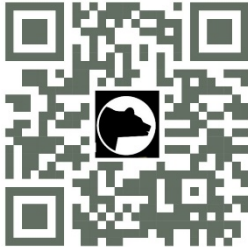
3. PRODUCT WARRANTY

Our products come with after-sales service and warranty protection. If the product has any defects, please contact our after-sales service team. After confirmation, send the refrigerator along with the following items to us:

Email: Support@Explorerbear.com

Phone: 1-833-275-3482

Please register your product warranty on our website, or scan QR code below:



4. TROUBLESHOOTING

Refrigerator not working:

- Check if there is a power outage or if the voltage is too low.
- Make sure the power plug is making proper contact.
- Check if the fuse has blown. The fuse is located in the cigarette lighter head of the power cord. Unscrew and open the cover to replace the fuse.

If the refrigerator displays an error code, refer to the error code guide to troubleshoot the issue.

ERROR CODE	Error Type
E1	Battery Protection Activated
E2	Fan Failure
E3	Compressor Initializing Failure
E4	Min./Max.Compressor Speed Error
E5	Over Heat Protection Failure
E6	NTC Open or Short

Food in the refrigerator is freezing:

- The temperature setting is too low.

Poor cooling performance:

- Too much food is stored in the refrigerator, causing congestion and poor air circulation.
- The door is not closed properly.
- The door seal is damaged or deformed, resulting in poor sealing.
- Poor ventilation at the heat dissipation fan.
- Excessive hot food is placed inside.
- Exposure to sunlight or nearby heat sources.

Hearing sounds like running water inside the refrigerator:

- This is the normal sound of the refrigerant flowing.

Abnormal noise:

- Heat dissipation fan failure.
- Loose or detached parts inside the refrigerator.

5. SAFETY INSTRUCTIONS

Improper operation may endanger personal safety or cause damage to the refrigerator. Safety instructions related to current or voltage hazards. Failure to follow these instructions may result in injury to the refrigerator or damage and reduced functionality.

- Make sure to store only items that are suitable for the set cooling temperature in the refrigerator.
- If you need to store medication, verify that the refrigerator's cooling capabilities match the medication's requirements.
- This product cannot be placed upside down or reversed by 90 degrees.
- If the power cord is damaged, it must be replaced by the manufacturer, customer service, or a similarly qualified person.
- This product should only be repaired by qualified personnel. Improper repairs may result in product and personal injury.
- Children should not clean or maintain this product.
- This product should be placed or used out of reach of children under 8 years old.
- Do not store explosive items (such as aerosol cans with flammable propellants) in the refrigerator.
- Verify that the input voltage of the refrigerator matches the power supply voltage.
- When not in use, unplug the power cord from the socket or cigarette lighter.
- In the following situations, disconnect the power cord.
- If the power cord is damaged, it must be replaced with a connection cable of the same type and specification. Disconnect the power cord.
- If the refrigerator has visible damage, do not operate it; contact customer service promptly.
- The machine should be repaired by professionals. Improper repairs may cause significant damage to the refrigerator. Call customer service for refrigerator repairs.

- Do not open the control circuit.
- Cooling equipment should not be transported with perishable materials or materials containing solvents.
- Food should be stored in its original packaging or appropriate containers.
- Make sure the power cord and plug are dry before starting.
- Do not use electrical appliances inside the refrigerator, except for those with special functions recommended by the supplier.
- Start the refrigerator in a dry place and avoid splashing water.
- The refrigerator and power cord should be protected from moisture and rain.
- The refrigerator should not be placed near open flames or other heat sources (heaters, direct sunlight, gas, etc.).
- During operation, place the refrigerator in a well-ventilated area for heat dissipation, ensuring that the ventilation slots are not covered.
- Keep the refrigerator away from walls and other objects to ensure air circulation and better cooling performance.

Model Number	UBN10S
Capacity	10L / 10.5QT
Temperature Range	-4°F ~ 50°F
Display Temperature Range	-4°F ~ 104°F
DC (V)	12/24V
Fuse Size (A)	15
Wattage (W)	45
Amp Rating (A)	3.8A/1.9A
R134a (g)	
Product Measurement (Inches)	14.76*10.3*17.1
Package Measurement (Inches)	17.3*14*20.3
Net Weight (Lb.)	16.5