

Master-PUR L Trivolution

PU Suction hose & Transport Hose, extremely flexible, light duty, antistatic, microbe-resistant, hardly inflammable acc. to DIN 4102 B1

Material

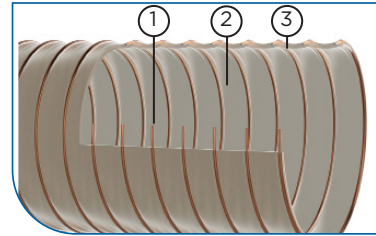
- 1 spiral: spring steel wire
- 2 wall: pure polyester polyurethane (acc. to DIN ISO 4649 more abrasion-resistant in comparison to polyether polyurethane)
- 3 wall thickness between spirals approx. 0.7 mm

Applications

- suction/extraction of paper and textile fibres
- granulate transport hose
- transport of fine-grained particles, such as dust and powder
- suction & transport hose for abrasive solids, liquids and gases
- protective hose against mechanical wear
- oil mist extraction/suction

Properties

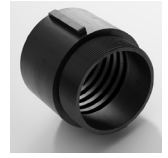
- hardly inflammable acc. to DIN 4102 B1
- microbe-resistant
- permanently antistatic, surface resistance < 10⁹ Ohm
- approved acc. to TRGS 727 and ATEX 2014/34 EU. Details acc. to certificate
- very good flexibility
- light
- halogen and plasticizer-free
- smallest bending radius
- optimum flow characteristics
- highly abrasion-resistant
- good resistance to chemicals, oil and fuel
- high tensile strength
- generally good UV and ozone resistance
- acc. to DIN 26057 type II



Clip-Grip Quick-Fix Clamp



Clip-Grip Hose Clamp, screwable



Combiflex PU Threaded Socket



PU Cuff, electroconductive



Hose Connector



Further connections available on request

Temperature Range

- -40°C to +90°C
- peaks to +125°C

DN	op. pressure	vacuum	bend radius	outer Ø	weight/m	old article no.	new article no.	standard length	max. production length
mm	bar	bar	mm	mm	kg			m	m
25*	3.34	0.8	30	30	0.23	110-025-x	000007-025-x	10	25
26	3.22	0.79	31	31	0.25	110-026-x	000007-026-x	10	25
32	2.52	0.71	40	40	0.35	110-032-x	000007-032-x	10	25
38	2.1	0.66	46	46	0.39	110-038-x	000007-038-x	10	25
40	2.1	0.66	48	48	0.4	110-040-x	000007-040-x	10	25
45	1.84	0.59	53	53	0.42	110-045-x	000007-045-x	10	25
50*	1.75	0.55	57	57	0.44	110-050-x	000007-050-x	10	25
51	1.68	0.52	58	58	0.48	110-051-x	000007-051-x	10	25
55	1.54	0.44	63	63	0.51	110-055-x	000007-055-x	10	25
60	1.4	0.44	68	68	0.53	110-060-x	000007-060-x	10	25
63	1.34	0.41	70	70	0.57	110-063-x	000007-063-x	10	25
65	1.26	0.37	73	73	0.64	110-065-x	000007-065-x	10	25
70	1.12	0.37	78	78	0.68	110-070-x	000007-070-x	10	25
75*	1.12	0.34	83	83	0.7	110-075-x	000007-075-x	10	25
76	1.12	0.29	84	84	0.72	110-076-x	000007-076-x	10	25
80	0.98	0.29	88	88	0.76	110-080-x	000007-080-x	10	25
90	0.84	0.22	99	99	0.88	110-090-x	000007-090-x	10	25
100*	0.84	0.22	108	108	0.94	110-100-x	000007-100-x	10	25
102	0.84	0.22	110	110	0.95	110-102-x	000007-102-x	10	25
110	0.7	0.22	119	119	1.03	110-110-x	000007-110-x	10	25
115	0.7	0.22	124	124	1.06	110-115-x	000007-115-x	10	25
120	0.7	0.22	129	129	1.12	110-120-x	000007-120-x	10	25
125*	0.7	0.22	134	134	1.16	110-125-x	000007-125-x	10	25
127	0.7	0.22	135	135	1.18	110-127-x	000007-127-x	10	25
130	0.56	0.22	139	139	1.2	110-130-x	000007-130-x	10	25
140	0.56	0.15	149	149	1.38	110-140-x	000007-140-x	10	25
150*	0.56	0.15	159	159	1.4	110-150-x	000007-150-x	10	25
152	0.56	0.15	161	161	1.48	110-152-x	000007-152-x	10	25
160	0.56	0.15	170	170	1.74	110-160-x	000007-160-x	10	25
170	0.42	0.15	180	180	1.8	110-170-x	000007-170-x	10	25
175	0.42	0.15	185	185	1.85	110-175-x	000007-175-x	10	25
180	0.42	0.15	190	190	1.9	110-180-x	000007-180-x	10	25
200*	0.42	0.15	210	210	2.1	110-200-x	000007-200-x	10	25
203	0.42	0.15	214	214	2.3	110-203-x	000007-203-x	10	25
225	0.28	0.07	235	235	2.55	110-225-x	000007-225-x	10	25
250	0.28	0.07	260	260	3.02	110-250-x	000007-250-x	10	25
254*	0.28	0.07	264	264	3.02	110-254-x	000007-254-x	10	25
275	0.28	0.07	284	284	3.11	110-275-x	000007-275-x	10	25
280	0.28	0.07	290	290	3.14	110-280-x	000007-280-x	10	20
300	0.25	0.07	310	310	3.2	110-300-x	000007-300-x	10	20
315	0.25	0.07	325	325	3.32	110-315-x	000007-315-x	10	20
325	0.25	0.07	335	335	3.4	110-325-x	000007-325-x	10	20
350	0.13	0.07	360	360	3.6	110-350-x	000007-350-x	10	20
375*	0.13	0.05	386	386	3.85	110-375-x	000007-375-x	10	20
400	0.13	0.05	410	411	4.45	110-400-x	000007-400-x	10	20
450	0.13	0.05	460	461	5.06	110-450-x	000007-450-x	10	20
500	0.13	0.05	510	511	5.7	110-500-x	000007-500-x	10	20

All data refers to a medium and ambient temperature of +20 °C.
 * Available on request
 Subject to technical changes and colour deviations.