

Master-PUR HX Food

PU Suction & Transport Hose, heavy-duty, food-grade quality acc. to EU 10/2011 and FDA

Material

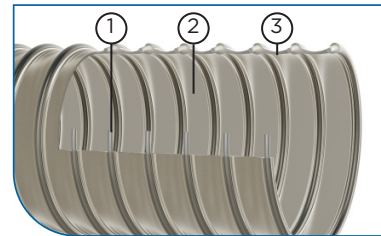
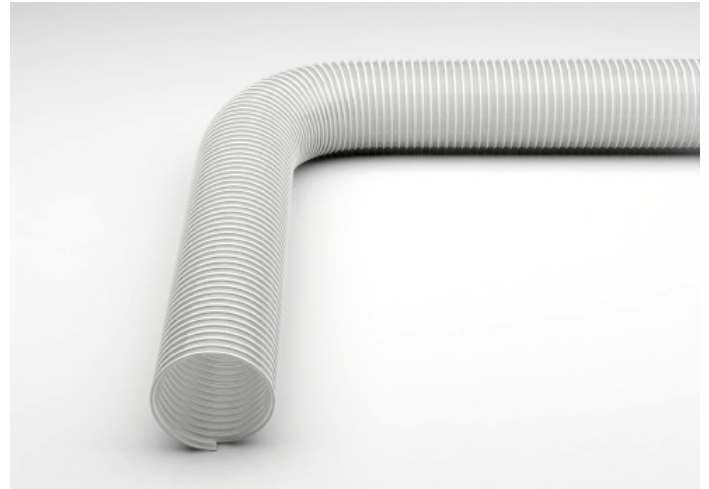
- 1 spiral: spring steel wire (stainless steel 1.4310)
- 2 wall: pure polyether polyurethane, food-grade (FDA)
- 3 wall thickness between spirals approx. 1.7 -2.1 mm depending on DN

Applications

- pharmaceutical industry
- chemicals industry
- food industry

Properties

- the hose conforms with EU Guideline 10/2011
- approved for food-grade categories: A, B, C, D1, D2, E (contact durations acc. to Test Report)
- materials comply with the following food regulations:
 - FDA 21 CFR §177.2600
 - FDA 21 CFR §178.2010
- extremely abrasion resistant via specific reinforcements underneath the spiral
- flexible
- heavy
- mostly smooth inner lining
- odourless/tasteless
- microbe and hydrolysis-resistant
- increased pressure and vacuum resistance
- halogen and plasticizer-free
- optimum flow characteristics
- good chemical resistance
- high tensile strength
- generally good UV and ozone resistance
- acc. to TRGS 727 and ATEX 2014/34 EU, with earthing at both ends of the spiral for non-flammable dust/bulk solids in Zone 22. For gases/liquids with low conductivity of electrostatic charges in Zone 2.



Temperature Range

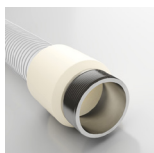
- -40°C to +90°C
- peaks to +125°C

DN	op. pressure	vacuum	bend radius	outer Ø	weight/m	old article no.	new article no.	standard length	max. production length
mm	bar	bar	mm	mm	kg			m	m
32*	4.85	0.94	80	42	0.66	114F-032-x	000160-032-x	10	20
40*	4.27	0.94	100	50	0.83	114F-040-x	000160-040-x	10	20
50*	4.02	0.94	123	60	1.02	114F-050-x	000160-050-x	10	20
51	4	0.94	125	61	1.04	114F-051-x	000160-051-x	10	20
55*	3.75	0.89	140	65	1.1	114F-055-x	000160-055-x	10	20
60*	3.6	0.89	150	70	1.2	114F-060-x	000160-060-x	10	20
65*	3.3	0.89	165	75	1.29	114F-065-x	000160-065-x	10	20
70*	3.15	0.89	175	80	1.38	114F-070-x	000160-070-x	10	20
75*	2.96	0.89	188	86	1.57	114F-075-x	000160-075-x	10	20
76*	2.92	0.89	190	87	1.61	114F-076-x	000160-076-x	10	20
80*	2.77	0.89	200	93	1.93	114F-080-x	000160-080-x	10	20
90*	2.4	0.89	225	103	2.16	114F-090-x	000160-090-x	10	20
100*	2.15	0.87	246	113	2.53	114F-100-x	000160-100-x	10	20
102*	2.1	0.87	250	115	2.6	114F-102-x	000160-102-x	10	20
110*	1.95	0.87	275	124	2.82	114F-110-x	000160-110-x	10	20
115*	1.8	0.87	290	129	2.94	114F-115-x	000160-115-x	10	20
120*	1.65	0.87	300	134	3.07	114F-120-x	000160-120-x	10	20
125*	1.65	0.87	310	138	3.33	114F-125-x	000160-125-x	10	20
127*	1.65	0.87	315	140	3.44	114F-127-x	000160-127-x	10	20
130*	1.65	0.84	325	145	3.54	114F-130-x	000160-130-x	10	20
140*	1.5	0.83	350	153	3.81	114F-140-x	000160-140-x	10	20
150*	1.5	0.82	433	165	4.08	114F-150-x	000160-150-x	10	20
152*	1.5	0.82	450	167	4.13	114F-152-x	000160-152-x	10	20

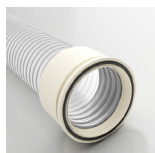
All data refers to a medium and ambient temperature of +20 °C.

* Available on request

Subject to technical changes and colour deviations.



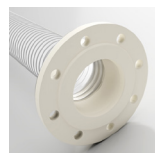
Combiflex PU Cast-On Connectors, Food



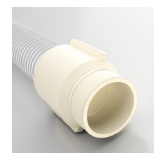
Combiflex PU Cone Flange Food



Master-Grip Double-Wire Clamp



Combiflex PU Fixed Flange Food



Combiflex PU Threaded Sockets Food