

Master-PUR L Food

PU Suction & Transport Hose, light duty, food-grade quality acc. to EU 10/2011 and FDA

Material

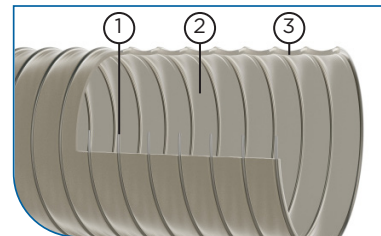
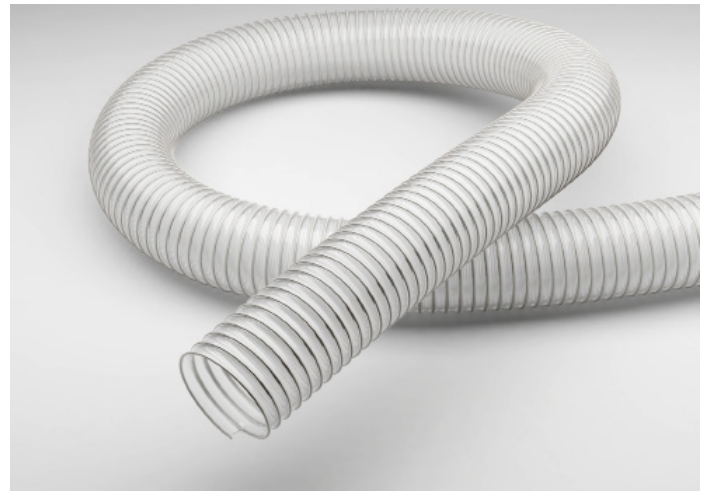
- 1 spiral: spring steel wire (stainless steel 1.4310)
- 2 wall: pure polyether polyurethane, food-grade (FDA)
- 3 wall thickness between spirals approx. 0.7 mm

Applications

- pharmaceutical industry
- chemicals industry
- food industry

Properties

- the hose conforms with EU Guideline 10/2011
- approved for food-grade categories: A, B, C, D1, D2, E (contact durations acc. to Test Report)
- materials comply with the following food regulations:
 - FDA 21 CFR §177.2600
 - FDA 21 CFR §178.2010
- abrasion-resistant
- mostly smooth inner lining
- odourless/tasteless
- microbe and hydrolysis-resistant
- light
- very good flexibility
- smallest bending radius
- halogen and plasticizer-free
- optimum flow characteristics
- good chemical resistance
- high tensile strength
- generally good UV and ozone resistance
- acc. to TRGS 727 and ATEX 2014/34 EU, with earthing at both ends of the spiral for non-flammable dust/bulk solids in Zone 22. For gases/liquids with low conductivity of electrostatic charges in Zone 2.



Temperature Range

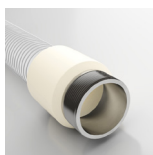
- -40°C to +90°C
- peaks to +125°C

DN	op. pressure	vacuum	bend radius	outer Ø	weight/m	old article no.	new article no.	standard length	max. production length
mm	bar	bar	mm	mm	kg			m	m
32	2.52	0.71	40	40	0.35	110F-032-x	000012-032-x	10	25
38	2.1	0.66	46	46	0.39	110F-038-x	000012-038-x	10	25
40	2.1	0.66	48	48	0.4	110F-040-x	000012-040-x	10	25
45*	1.84	0.59	53	53	0.44	110F-045-x	000012-045-x	10	25
50*	1.71	0.51	57	57	0.45	110F-050-x	000012-050-x	10	25
51	1.68	0.52	58	58	0.45	110F-051-x	000012-051-x	10	25
55*	1.54	0.44	63	63	0.54	110F-055-x	000012-055-x	10	25
60	1.4	0.44	68	68	0.53	110F-060-x	000012-060-x	10	25
65	1.26	0.37	75	73	0.64	110F-065-x	000012-065-x	10	25
70	1.12	0.37	80	78	0.68	110F-070-x	000012-070-x	10	25
75*	1.12	0.3	84	83	0.71	110F-075-x	000012-075-x	10	25
76	1.12	0.29	85	84	0.72	110F-076-x	000012-076-x	10	25
80	0.98	0.29	90	88	0.76	110F-080-x	000012-080-x	10	25
90*	0.84	0.22	99	99	0.88	110F-090-x	000012-090-x	10	25
100*	0.84	0.22	108	108	0.94	110F-100-x	000012-100-x	10	25
102	0.84	0.22	110	110	0.95	110F-102-x	000012-102-x	10	25
110*	0.7	0.22	119	119	1.23	110F-110-x	000012-110-x	10	25
115*	0.7	0.22	124	124	1.28	110F-115-x	000012-115-x	10	25
120*	0.7	0.22	130	129	1.12	110F-120-x	000012-120-x	10	25
125*	0.7	0.22	133	133	1.17	110F-125-x	000012-125-x	10	25
127	0.7	0.22	135	135	1.18	110F-127-x	000012-127-x	10	25
130*	0.56	0.22	141	140	1.2	110F-130-x	000012-130-x	10	25
140*	0.56	0.15	153	150	1.38	110F-140-x	000012-140-x	10	25
150*	0.56	0.15	163	159	1.47	110F-150-x	000012-150-x	10	25
152	0.56	0.15	165	161	1.48	110F-152-x	000012-152-x	10	25
160*	0.56	0.15	170	170	1.74	110F-160-x	000012-160-x	10	25
175*	0.42	0.15	185	185	1.85	110F-175-x	000012-175-x	10	25
180*	0.42	0.15	190	190	1.9	110F-180-x	000012-180-x	10	25
200*	0.42	0.15	212	211	2.25	110F-200-x	000012-200-x	10	25
203	0.42	0.15	215	214	2.3	110F-203-x	000012-203-x	10	25

All data refers to a medium and ambient temperature of +20 °C.

* Available on request

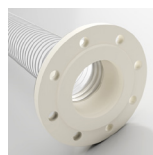
Subject to technical changes and colour deviations.



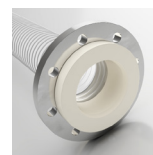
Combiflex PU Cast-On Connectors, Food



Master-Grip Double-Wire Clamp



Combiflex PU Fixed Flange Food



Combiflex PU Swivel Flange Food



Combiflex PU Threaded Sockets Food