

Master-Clip VINYL B

Suction & Blower Hose made from PVC-coated Polyester fabric, hardly inflammable

Material

- 1 clip profile spiral: hot-dip galvanised steel band
- 2 wall: PVC-coated polyester fabric, hardly inflammable

Applications

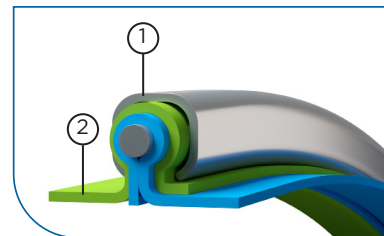
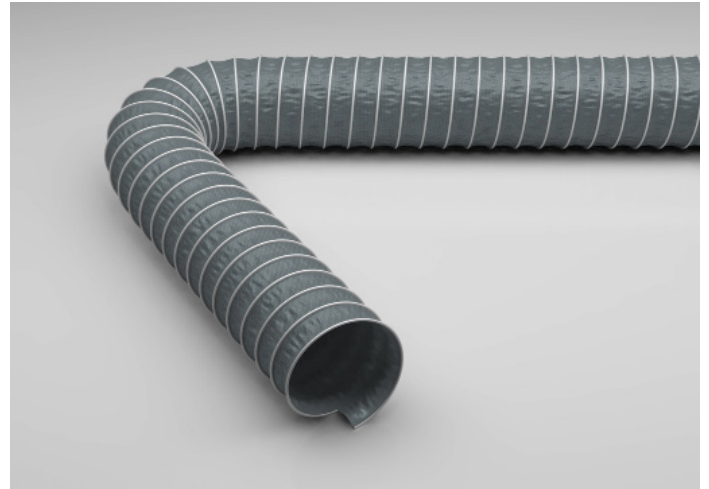
- air-conditioning and ventilation systems
- air supply and extraction
- tent heating
- solder fume extraction
- low pressure range
- extractor units

Properties

- hardly inflammable
- outer chafing protection spiral
- good mechanical resistance
- light
- high tension-proof connection of wall-lining and spiral via special clamp mechanism
- robust and inexpensive
- highly flexible
- extremely compressable to approx. 1:6
- smallest bending radius
- extremely lightweight

Temperature Range

- -20°C to +70°C
- peaks to +80°C



DN	op. pressure	vacuum	bend radius	weight/m	old article no.	new article no.	standard length	max. production length
	bar	bar	mm	kg			m	m
50	0.9	0.31	30	0.4	212-050-x	000252-050-x	10	10
55	0.85	0.26	33	0.4	212-055-x	000252-055-x	10	10
60	0.78	0.22	36	0.5	212-060-x	000252-060-x	10	10
65	0.68	0.19	39	0.5	212-065-x	000252-065-x	10	10
70	0.67	0.16	42	0.5	212-070-x	000252-070-x	10	10
75	0.62	0.14	45	0.6	212-075-x	000252-075-x	10	15
80	0.61	0.12	48	0.6	212-080-x	000252-080-x	10	20
90	0.56	0.1	54	0.6	212-090-x	000252-090-x	10	20
100	0.51	0.08	60	0.6	212-100-x	000252-100-x	10	25
110	0.48	0.07	66	0.7	212-110-x	000252-110-x	10	25
120	0.36	0.06	72	0.7	212-120-x	000252-120-x	10	25
125	0.33	0.05	75	0.8	212-125-x	000252-125-x	10	25
130	0.28	0.05	78	0.8	212-130-x	000252-130-x	10	25
140	0.25	0.04	84	0.8	212-140-x	000252-140-x	10	25
150	0.22	0.04	90	0.9	212-150-x	000252-150-x	10	25
160	0.21	0.03	96	0.9	212-160-x	000252-160-x	10	25
170	0.19	0.03	102	0.9	212-170-x	000252-170-x	10	25
175	0.185	0.03	105	1	212-175-x	000252-175-x	10	25
180	0.172	0.02	108	1	212-180-x	000252-180-x	10	25
200	0.148	0.02	120	1.2	212-200-x	000252-200-x	10	25
215	0.128	0.02	129	1.3	212-215-x	000252-215-x	10	25
225	0.115	0.02	135	1.4	212-225-x	000252-225-x	10	25
250	0.1	0.01	175	1.6	212-250-x	000252-250-x	10	25
275	0.08	0.01	193	1.9	212-275-x	000252-275-x	10	25
300	0.07	0.01	210	2.1	212-300-x	000252-300-x	10	25
315	0.062	0.01	221	2.1	212-315-x	000252-315-x	10	15
325	0.059	0.01	228	2.2	212-325-x	000252-325-x	10	15
350	0.056	0.01	245	2.5	212-350-x	000252-350-x	10	15
375	0.05	0.01	263	2.9	212-375-x	000252-375-x	10	15
400	0.047	0.01	280	3.1	212-400-x	000252-400-x	10	15
450	0.045	0.01	360	3.6	212-450-x	000252-450-x	10	15
500	0.043	0.01	400	4.1	212-500-x	000252-500-x	10	10
550	0.042	0.01	440	4.6	212-550-x	000252-550-x	10	10
600	0.039	0.01	480	5.1	212-600-x	000252-600-x	10	10
700	0.031	0.01	560	6	212-700-x	000252-700-x	10	10
800	0.022	0.01	640	6.9	212-800-x	000252-800-x	10	10
900	0.016	0.01	720	7.8	212-900-x	000252-900-x	10	10

All data refers to a medium and ambient temperature of +20 °C.

* Available on request

Subject to technical changes and colour deviations.



Hose Reducer, symmetrical



Clip-Grip quick action clamp



Clip-Grip Hose clamp, screwable



Hose Connector