

If you still have questions after reviewing these instructions, please feel free to call us at (616) 531-9367. **NOTE: Template is attached to the Glass Crate.**

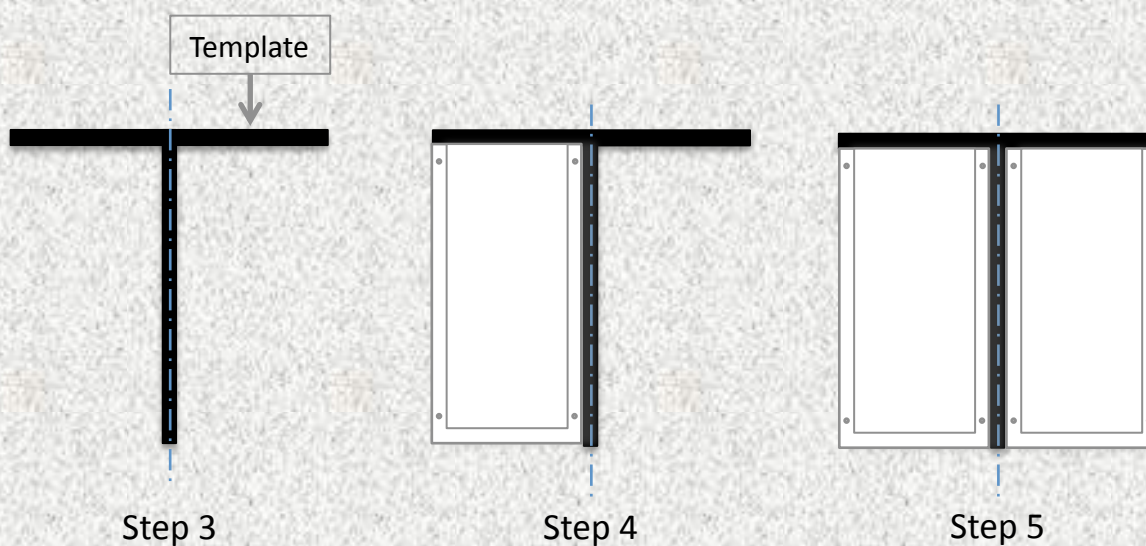
Step 1: Choose where you would like to install your VuEase®. Measure the area making sure the glass is smaller than the space on your wall.

Step 2: Insert each of the mounting screws a few turns into the VuEase® backer using the angled pre-drilled holes. Make sure they point at a downward angle.
(When screwed into the wall the angle will give extra support.)

Step 3: Align the center of the Template to the center of your mounting area. Use a level to make sure it is straight.

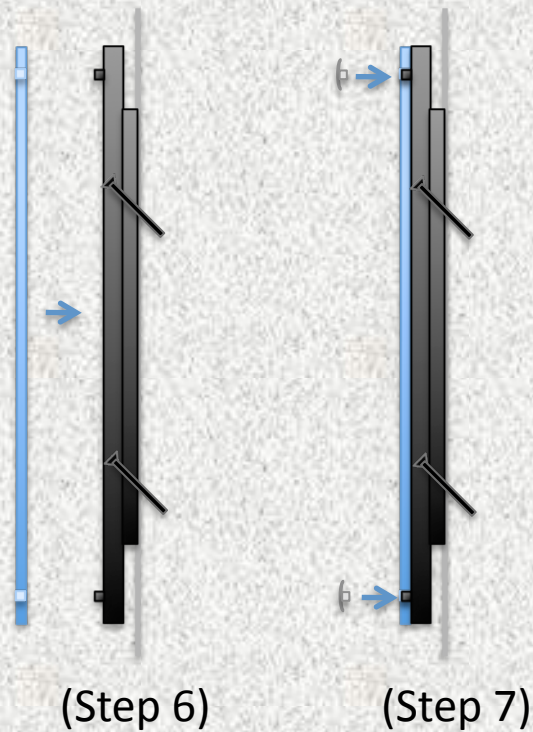
Step 4: Hold the backer tightly to the wall with one hand; with the other hand use a driver, and turn each screw into the wall. (It is NOT necessary to mount into a stud or have anchors in the wall)

Step 5: Position and install the second backer using the template. Repeat Step 4 and remove template.



Step 6: Position the glass aligning to the glass mounting studs.

Step 7: Attach the glass with low profile mounting caps, hand tightening with rubber disc.
(rubber gripper disc is supplied with the order)



Step 8: Slide the provided insert into the top of your now fully assembled unit.