



Automatic Brush

Before installing the automatic brush, we recommend that you slowly introduce the product to your cat by leaving it out by an area where he/she frequents regularly. Then after they are comfortable with the product, start using it on them manually for a few days to teach them how to use it. After they have shown interest in getting groomed, you can now begin installation. Make sure to place catnip and/or treats around and on the products to attract your cat.

Please watch the video on our listing page to get more tips on getting your cat interested in the product. Also, please message us via the chat box or through the contact form on our website if you have any questions or need additional help.

Installation Using Screws



STEP 1: Open the brush cover.



STEP 2: The automatic brush comes with a pack of catnip.

Automatic Brush (Contd.)

Installation Using Screws (Contd.)



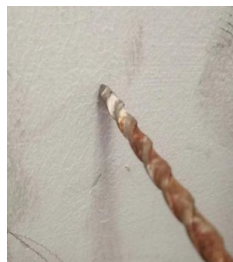
STEP 3: Put The catnip inside the brush. You may also open the pack and rub a pinch of catnip between your fingers to activate the aroma.



STEP 4: Remove the back cover of the brush holder by pressing the button at the bottom and pushing towards the button at the same time.



STEP 5: The back cover has two holes for the screws.



STEP 6: Mark the position of these holes on the wall and drill two holes.

Automatic Brush (Contd.)

Installation Using Screws (Contd.)



STEP 7: Insert screw holders that come with the automatic brush into these holes in the wall.



STEP 8: Insert the screws into the holes on the back cover from inside and secure the back cover of the brush on the wall by screwing into the holes in the walls.



STEP 9: Attach the automatic brush to the back cover to complete the installation.



Pawsitive Joy
Pet Products That Bring Joy to Your Home!

Automatic Brush (Contd.)

Installation Using Glue



STEP 1: Open the brush cover.



STEP 2: The automatic brush comes with a pack of catnip.



STEP 3: Put The catnip inside the brush. You may also open the pack and rub a pinch of catnip between your fingers to activate the aroma.



STEP 4: Remove the back cover of the brush holder by pressing the button at the bottom and pushing towards the button at the same time.



STEP 5: The automatic brush comes with a tube of glue.

Automatic Brush (Contd.)

Installation Using Glue (Contd.)



STEP 6: Put a thick layer of glue on the outer side of the back cover.



STEP 7: Hold the back cover firmly against the wall to attach it.



STEP 8: After an hour, attach the automatic brush to the back cover to complete the installation.



Pawsitive Joy

Pet Products That Bring Joy to Your Home!

Automatic Brush (Contd.)

Installation Using Zip Ties



STEP 1: The automatic brush can also be attached to the leg of a chair or a table using zip ties.



STEP 2: Open the brush cover.



STEP 3: The automatic brush comes with a pack of catnip.



STEP 4: Put The catnip inside the brush. You may also open the pack and rub a pinch of catnip between your fingers to activate the aroma.



STEP 5: Lock the zip ties around the chair or table leg to complete the installation.