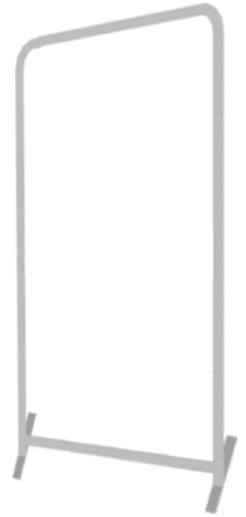


# 2 ft Tension Fabric Table Top

## Product Parts

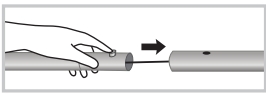
- 1 - 2-pc Shock-Corded Sides (x2)
- 2 - Top Corners (x2)
- 3 - Bottom Corners (x2)
- 4 - Top Center
- 5 - Bottom Center
- 6 - Connector
- 7 - Feet (2)
- 8 - Fabric Graphic



## Display Set-Up

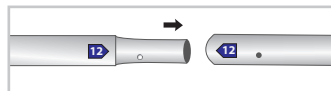
### Step 1

Align the two sections of each shock-corded side pole (1) and click them into place with the snap buttons.



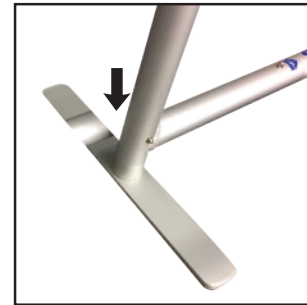
### Step 2

Continue combining poles (Parts 1-5) until the frame is complete, by matching corresponding numbers on the blue arrows.



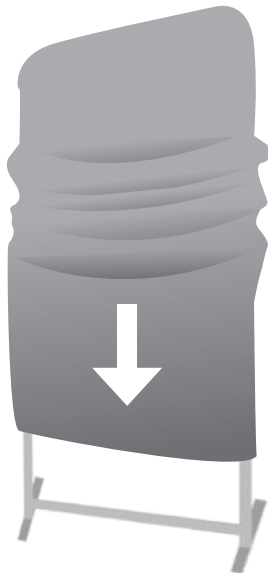
### Step 3

Attach the feet (7) to the bottom of the Bottom Corner pieces (3).



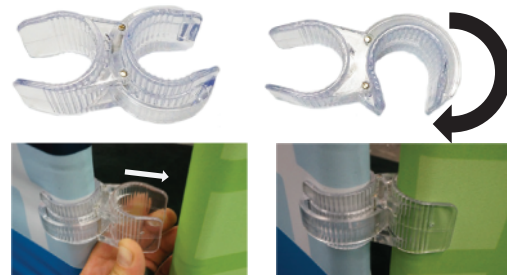
### Step 4

Set the frame upright and drape the fabric graphic (8) over it, pulling down evenly.



### Step 5 (optional)

Apply Connectors (6) to combine multiple kits for your display.



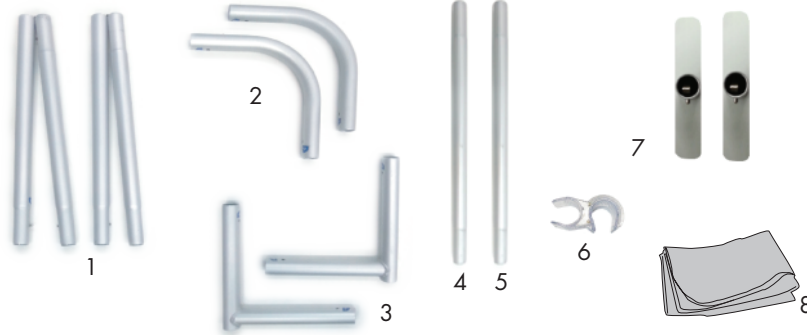
## Storage & Care

Use a damp cloth to clean the hardware.  
Machine wash the fabric graphic cold on gentle cycle. Tumble dry on no heat.  
Steam clean for wrinkles and never dry-clean.

# 3 ft Tension Fabric Table Top

## Product Parts

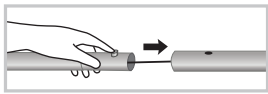
- 1 - 2-pc Shock-Corded Sides (x2)
- 2 - Top Corners (x2)
- 3 - Bottom Corners (x2)
- 4 - Top Center
- 5 - Bottom Center
- 6 - Connector
- 7 - Feet (2)
- 8 - Fabric Graphic



## Display Set-Up

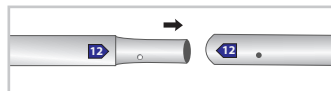
### Step 1

Align the two sections of each shock-corded side pole (1) and click them into place with the snap buttons.



### Step 2

Continue combining poles (Parts 1-5) until the frame is complete, by matching corresponding numbers on the blue arrows.



### Step 3

Attach the feet (7) to the bottom of the Bottom Corner pieces (3).



### Step 4

Set the frame upright and drape the fabric graphic (8) over it, pulling down evenly.



### Step 5 (optional)

Apply Connectors (6) to combine multiple kits for your display.



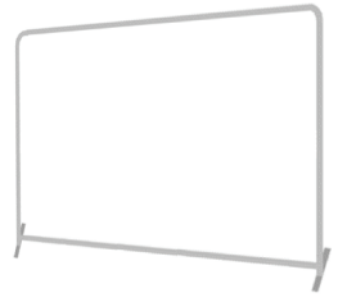
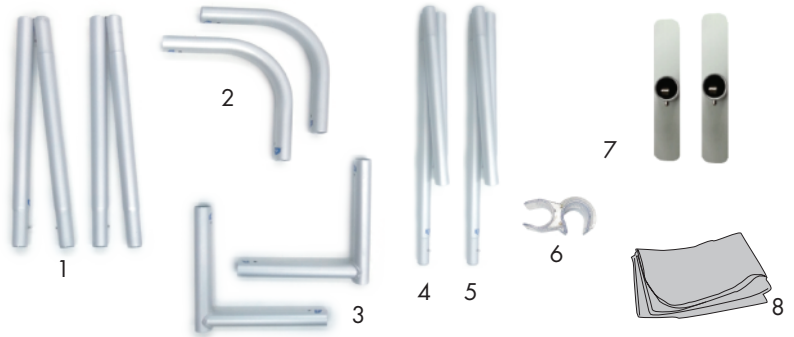
## Storage & Care

Use a damp cloth to clean the hardware.  
Machine wash the fabric graphic cold on gentle cycle. Tumble dry on no heat.  
Steam clean for wrinkles and never dry-clean.

# 6 ft Tension Fabric Table Top

## Product Parts

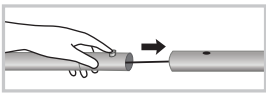
- 1 - 2-pc Shock-Corded Sides (x2)
- 2 - Top Corners (x2)
- 3 - Bottom Corners (x2)
- 4 - 2-pc Shock-Corded Top Center
- 5 - 2-pc Shock-Corded Bottom Center
- 6 - Connector
- 7 - Feet (2)
- 8 - Fabric Graphic



## Display Set-Up

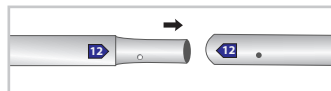
### Step 1

Align the two sections of each shock-corded side pole (1) and click them into place with the snap buttons.



### Step 2

Continue combining poles (Parts 1-5) until the frame is complete, by matching corresponding numbers on the blue arrows.



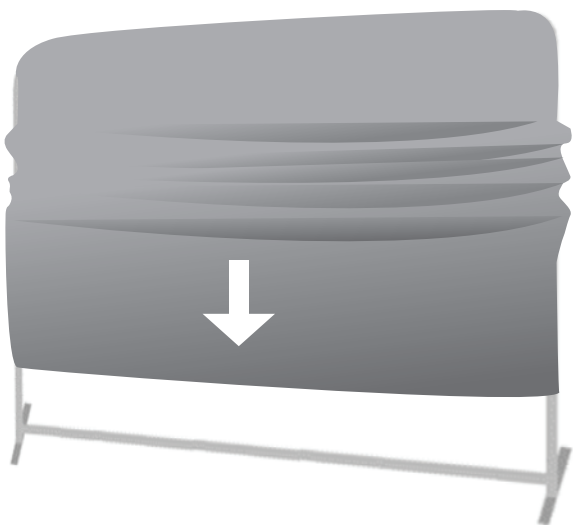
### Step 3

Attach the feet (7) to the bottom of the Bottom Corner pieces (3).



### Step 4

Set the frame upright and drape the fabric graphic (8) over it, pulling down evenly.



### Step 5 (optional)

Apply Connectors (6) to combine multiple kits for your display.



## Storage & Care

Use a damp cloth to clean the hardware.  
Machine wash the fabric graphic cold on gentle cycle. Tumble dry on no heat.  
Steam clean for wrinkles and never dry-clean.