

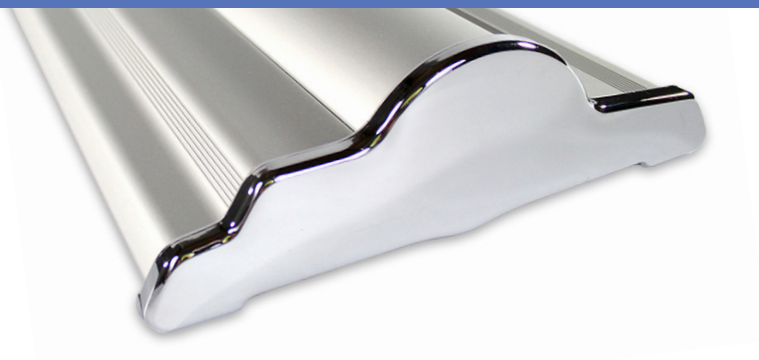
SILVERSTEP® TABLETOP 60"

RETRACTABLE BANNER STANDS

PRODUCT CODE: SSTT60



On frame On graphic



PRODUCT DESCRIPTION

Durable and uniquely designed, this aluminum stand is the perfect combination of versatility, appeal, and affordability.

DISPLAY DIMENSION 61.5" W x 9.5" H x 3" D

GRAPHIC DIMENSIONS 60" W x 69" to 92" H

GRAPHIC MATERIAL

Super Flat Vinyl or Fabric

GRAPHIC FINISHING

5" Bleed at the bottom

DISPLAY CONSTRUCTION

Sturdy Aluminum Construction

SHIPPING WEIGHTS & DIMENSIONS

SINGLE BOX - 1 Unit

Shipping Weight 25 lbs (stand only)
26 lbs (frame and graphic)

Shipping Dimensions 67" H x 13" W x 5" D

MASTER BOX - 4 Units

Shipping Weight 111 lbs (stand only)
112 lbs (frame and graphic)

Shipping Dimensions 69" H x 27" W x 13" D

LARGE QUANTITY FREIGHT

Master Box - Freight Shipping 6 boxes per 48" L x 40" W x 69" H skids

Master Box - Freight Weight 333 lbs (frame only)
336 lbs (frame & graphic)

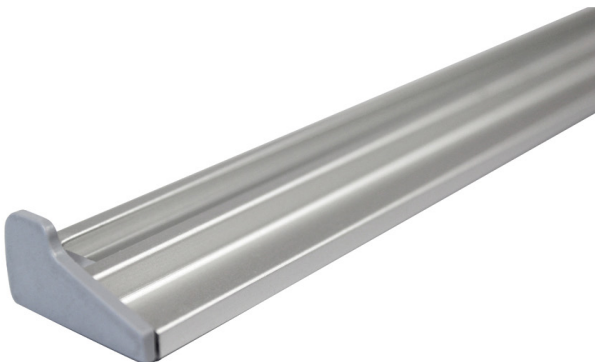
GRAPHIC TURN AROUND TIME

2 to 3 business days after proof approval

AVAILABLE ACCESSORIES

Silver Clamp Light (35 Watts)	Silver Clamp Light LED
Silver Light (50 Watts)	Silverstep Magnetic Connector

AVAILABILITY CA and PA



Silver Hook & Loop Bar
(Optional for Fabric)

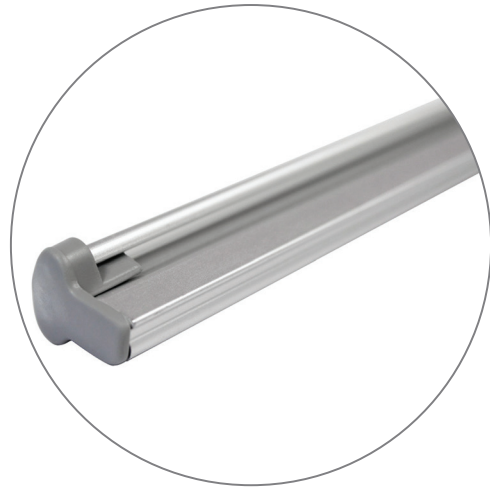


Silverstep Magnetic Connector
(Optional)

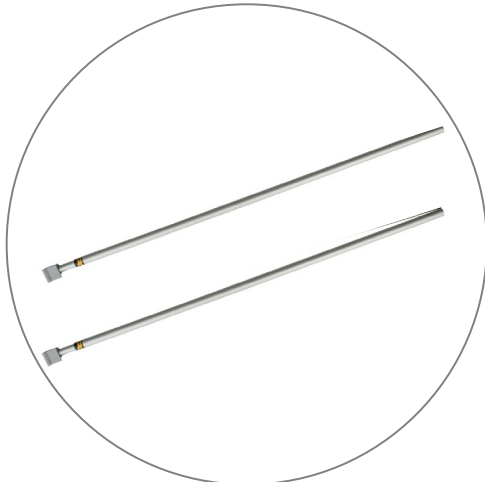
PARTS LIST



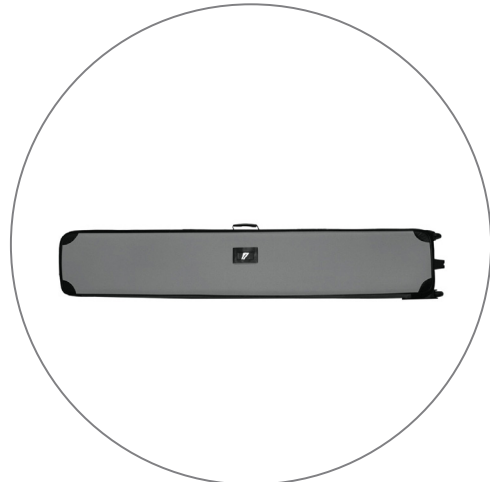
Qty 1 - Silverstep Stand



Qty 1 - Clamp Bar



Qty 2 - Telescopic Support Poles



Qty 1 - Silver Travel Bag

SILVERSTEP® TABLETOP 60"

RETRACTABLE BANNER STANDS

PRODUCT CODE: SSTT60

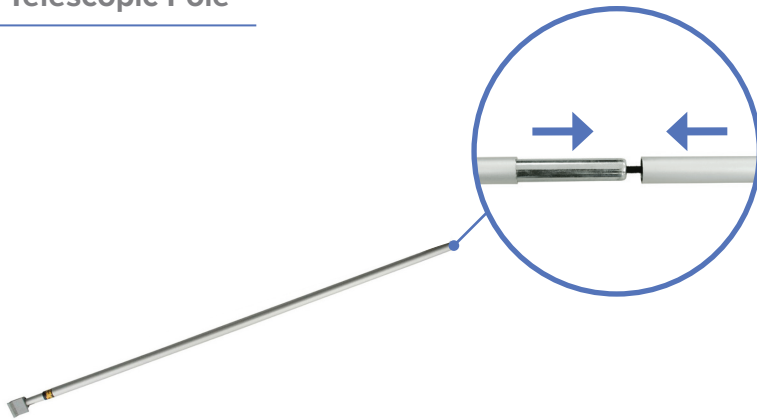
SET UP INSTRUCTIONS

Prepare Banner Stand

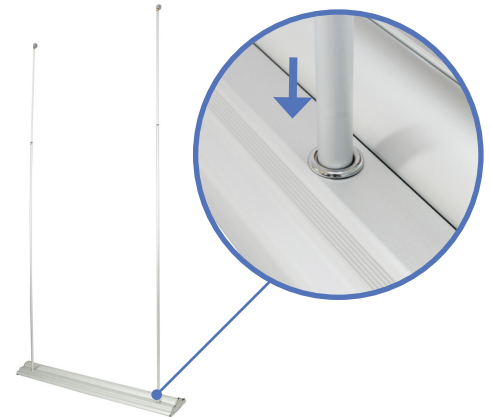


a. Remove Silverstep Stand out of bag.

Install Telescopic Pole



a. Assemble telescopic poles.



b. Insert telescopic poles into hole of the base stand.

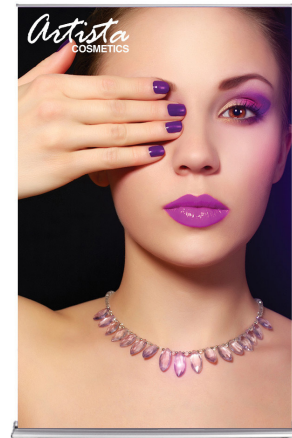
Pull Up Banner



a. Pull banner out of base.



b. Attach telescopic poles to the clamp bar.
Adjust pole to desired height.



c. Complete stand.

SET UP INSTRUCTIONS

Install Magnetic Connector



a. Pull off end caps from Silverstep.



b. Push connector piece until it locks in position.



c. Connect another Silverstep onto it.

Complete Connection

