



**MEGELIN**

LED Light Therapy Machine

<User Manual >

## Safety Precautions

 **Note:** Please read the instruction manual before use and follow its instructions.

The user manual not only contains instructions for using the device but also provides safety precautions, storage guidelines, and product warranty information. For your safety, please carefully review all the following safety information and startup instructions before using this device. We will not be responsible for any personal injury or material loss resulting from non-compliance with the guidelines mentioned herein.

## General Precautions

Before using the instrument, ensure that both the body and LED module are inspected for any issues. The device should be placed in a well-ventilated room, avoiding areas with high temperatures, high humidity, or direct sunlight.

Recommended startup temperature: 0~26°C

Recommended storage temperature: 0~35°C

Relative humidity should be kept below 80%

Please install it in a well-ventilated room, away from direct light, and make sure it is placed on a flat, level surface.

The instrument can sustain significant damage from even minor impacts, so avoid external impacts, and handle it with care to prevent any potential damage.

## Precautions for Power Hazards

When the device is started, it is forbidden to use it together with other heat-producing products. Please be careful not to let water enter the instrument. The high-voltage current created by moisture can cause fires or electric shocks.

Please do not use damaged power plugs or loose sockets.

Unplug the power plug when the device is not in use for an extended period, and store it after cleaning. Otherwise, it may cause electric shocks, electrical leakage, and fires.

Please promptly disconnect the power supply if the product comes into contact with water or exhibits abnormal sounds, a burnt odor, or smoke, or if it interacts with other equipment.

## Taboos

Even if the following precautions do not apply, please do not use the device if instructed by the operator.

1. Patients with the following diseases or symptoms are prohibited from using this product: metastatic tumors, heart disease, mental illness, hypertension, high fever, vasculitis obliterate, ophthalmopathy, malignant tumors, vascular compensatory insufficiency, active tuberculosis, acute soft tissue infections, pregnancy, bleeding tendency, skin sensory disturbances, and skin allergies.

2. Individuals suffering from acute injuries within 72 hours are not allowed to use the device.

3. Patients with pacemakers, defibrillators, or other electronic implants are prohibited from using it.

4. When suffering from infectious skin diseases.

5. When experiencing similar skin inflammatory conditions.

## Prescribed Matters

Users must operate the device after becoming familiar with the user manual.

The use of unapproved decorations may lead to equipment failures, and any resulting damage will not be covered free of charge.

Please do not disassemble or modify the maintenance equipment without authorization. Problems caused by unauthorized disassembly or repair will not be compensated.

# Product Composition



Adapter



Patch

## Light Sensitivity

Test your skin for light sensitivity prior to initial treatment:

- a. Power on device.
- b. Place device on range of 1/4 of your forearm skin for 3 minutes.
- c. After 3 minutes, check the area. If the area has turned red and redness lasts more than 2 hours, your skin is light sensitive.
- d. Please stop using it and contact your health physician.

## Cautions

- . Consult your doctor prior to using if you are:
  - . Pregnant.
  - . Taking medications known to cause photo-sensitivity.
  - . In any suspicious or cancerous lesions case.
  - . Recently I had a steroid injection or used topical steroids.
- . Do not use this device on infants. "If you experience discomfort or have a concern about the device, stop using it immediately and contact your doctor.
- . Use indoors only.
- . Use supplied power supply only.
- . Unplug from outlet when not in use to avoid tripping hazards.
- . Do not unplug by pulling the cord directly. Grasp the plug itself, not the cord, when unplugging from the outlet.
- . This product can only use hydrating liquid, do not put gel, essence, etc., so as not to block the water outlet

## Product Settings

Before installation, consider the position and spacing of the device. Install it at a distance from heating devices and other medical equipment.

Avoid direct sunlight and high humidity. Install it in a well-ventilated area with suitable temperature and humidity.



## Installation

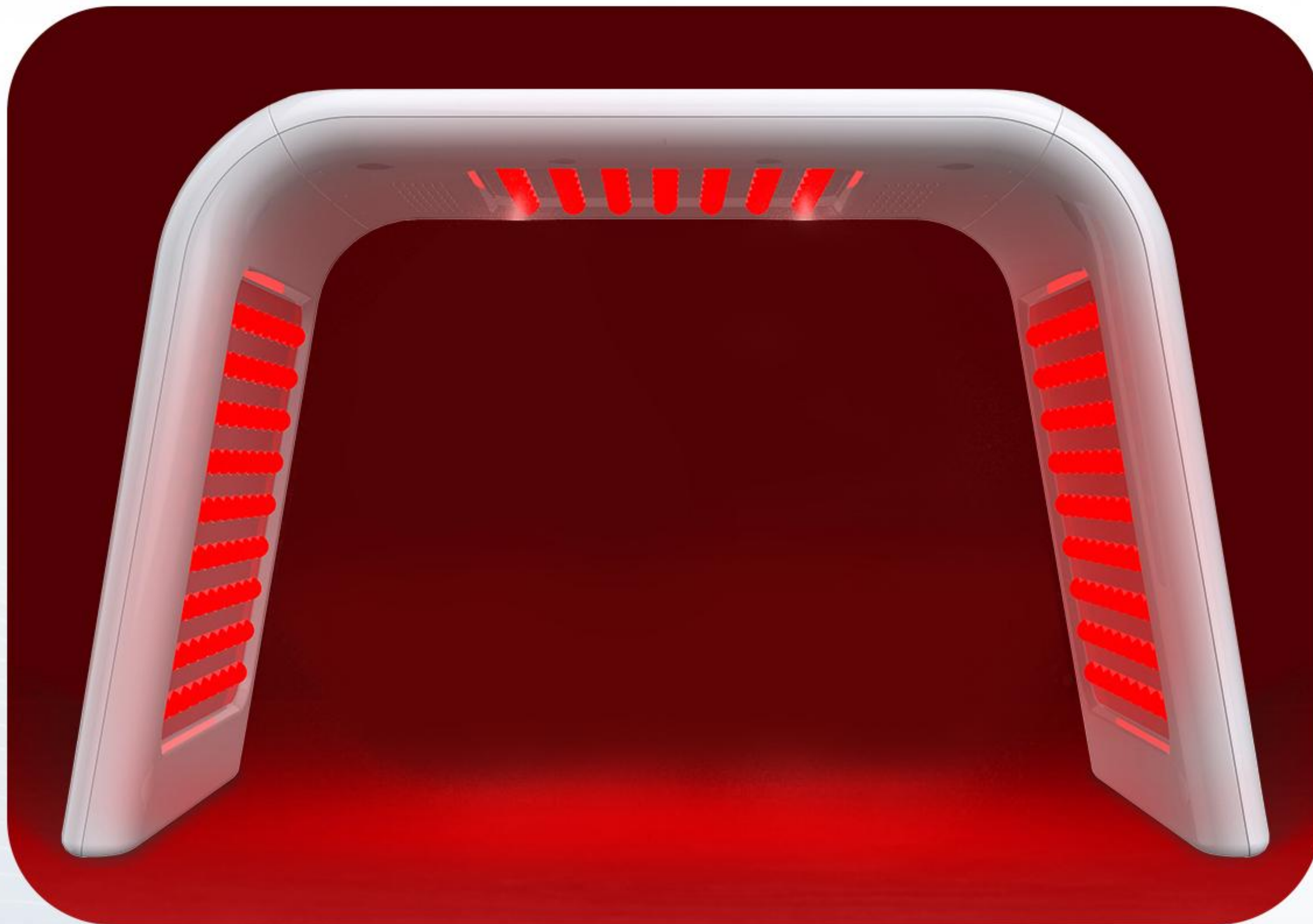
Open the package and gently remove the main body of the instrument. Align the bases on both sides of the instrument with the main body using the bayonet method. Assemble it and place it on a stable surface.

Take out the adapter power supply and insert the DC terminal into the DC connector of the instrument. Ensure a stable connection.

Insert the AC plug of the power adapter into the mains socket. When the power is connected, the instrument will respond with a "Ding ~" sound, and it will enter the standby state.

When the machine is not powered on, the time display text on the local panel will be invisible.

## Usage Method



## Spectral Irradiation

It is recommended to irradiate for 15 to 25 minutes each session (adjustable based on individual conditions). Use 3 to 4 times a week, with each session not exceeding 60 minutes.

Thanks to its foldable design, different body parts can be irradiated according to your needs, and various positions such as lying on your back, lying on your side, sitting, and lying on your stomach can be used flexibly. It can irradiate all parts from head to foot, addressing the issue of portability that comes with larger equipment.

## Usage Method



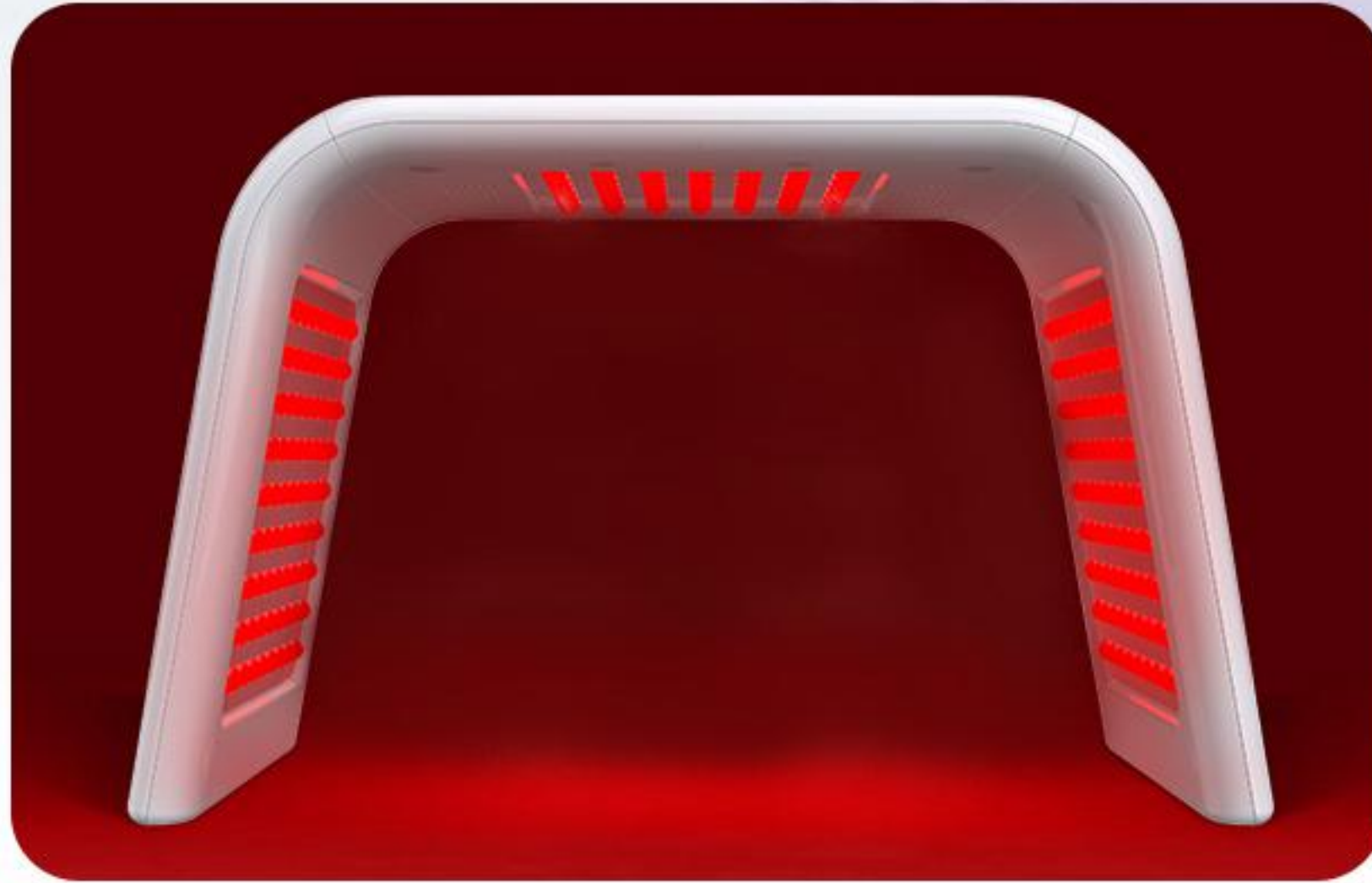
### Power On/Off Button

After powering on, enter "standby mode." Press this button to enter "power on mode" and the indicator light will illuminate with the default time of 20 minutes displayed. Press again to exit the power-on state and return to standby mode.

### Color Button

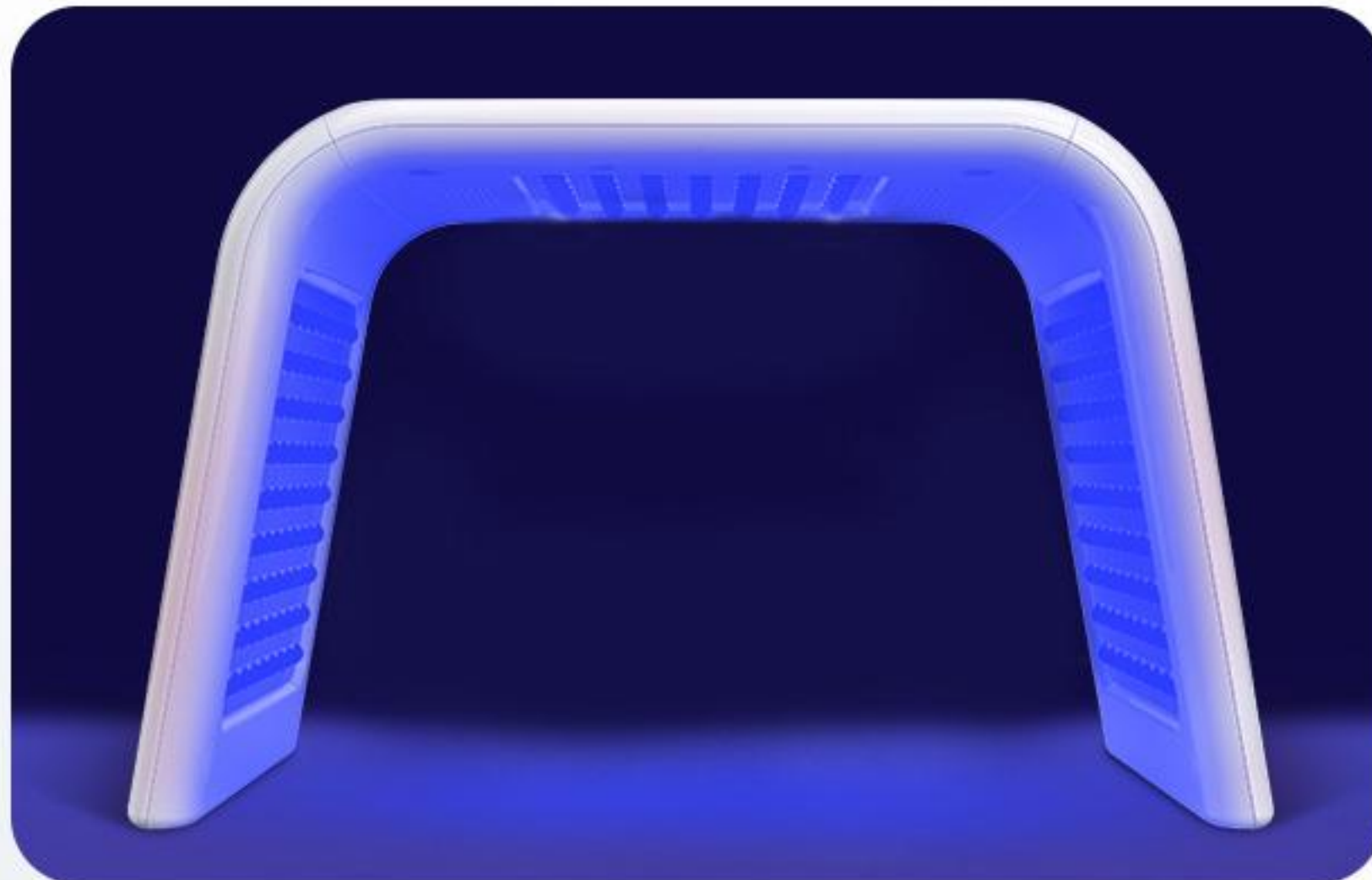
Continued pressing COLOR allows you to switch between different colored lights. Starting from the first press, the sequence of lights is as follows: yellow light, cycle light, red light, green light, blue light, yellow light, purple light, cyan light, white light.





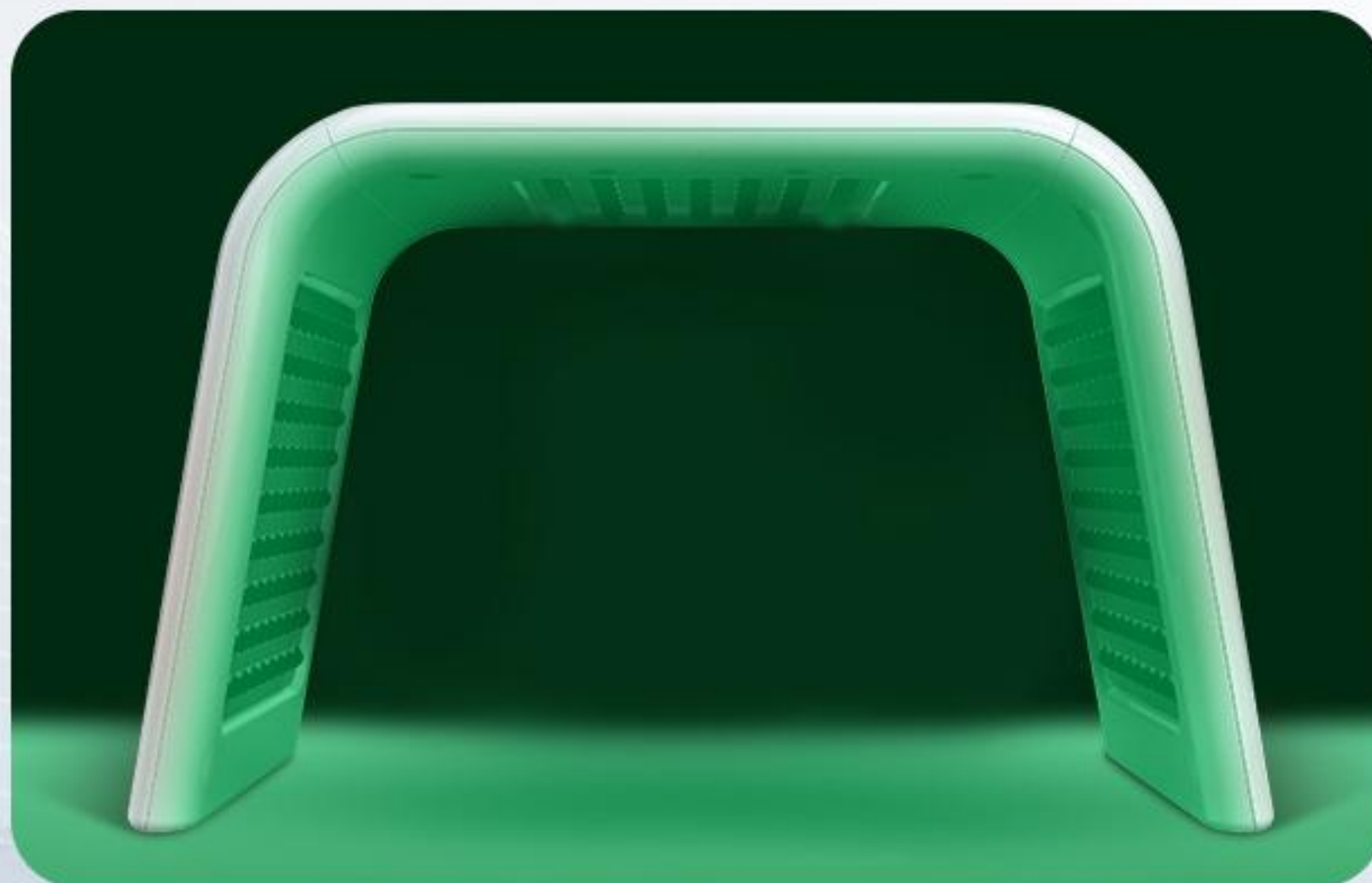
### Ⓜ Red & Infrared Light Button (Wavelength 647-850nm)

Press this button to activate the red & infrared light function. The red light button on the display screen will illuminate. Continued pressing will turn off the function as the button's display light goes off.



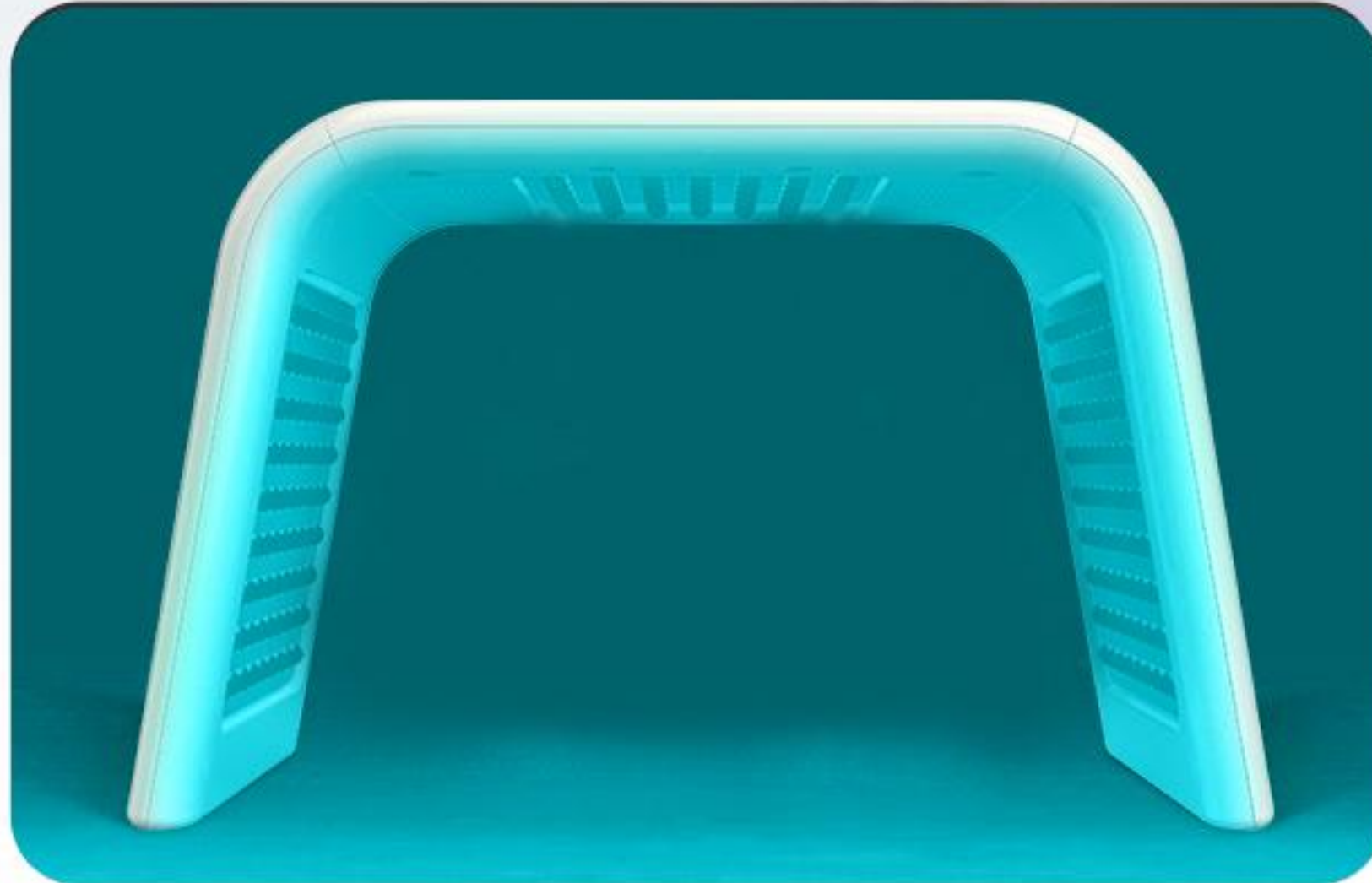
### Ⓟ Blue Light Button (Wavelength 430-455nm)

Press this button to activate the blue light function. The blue light button on the display screen will illuminate. Continued pressing will turn off the function as the button's display light goes off.



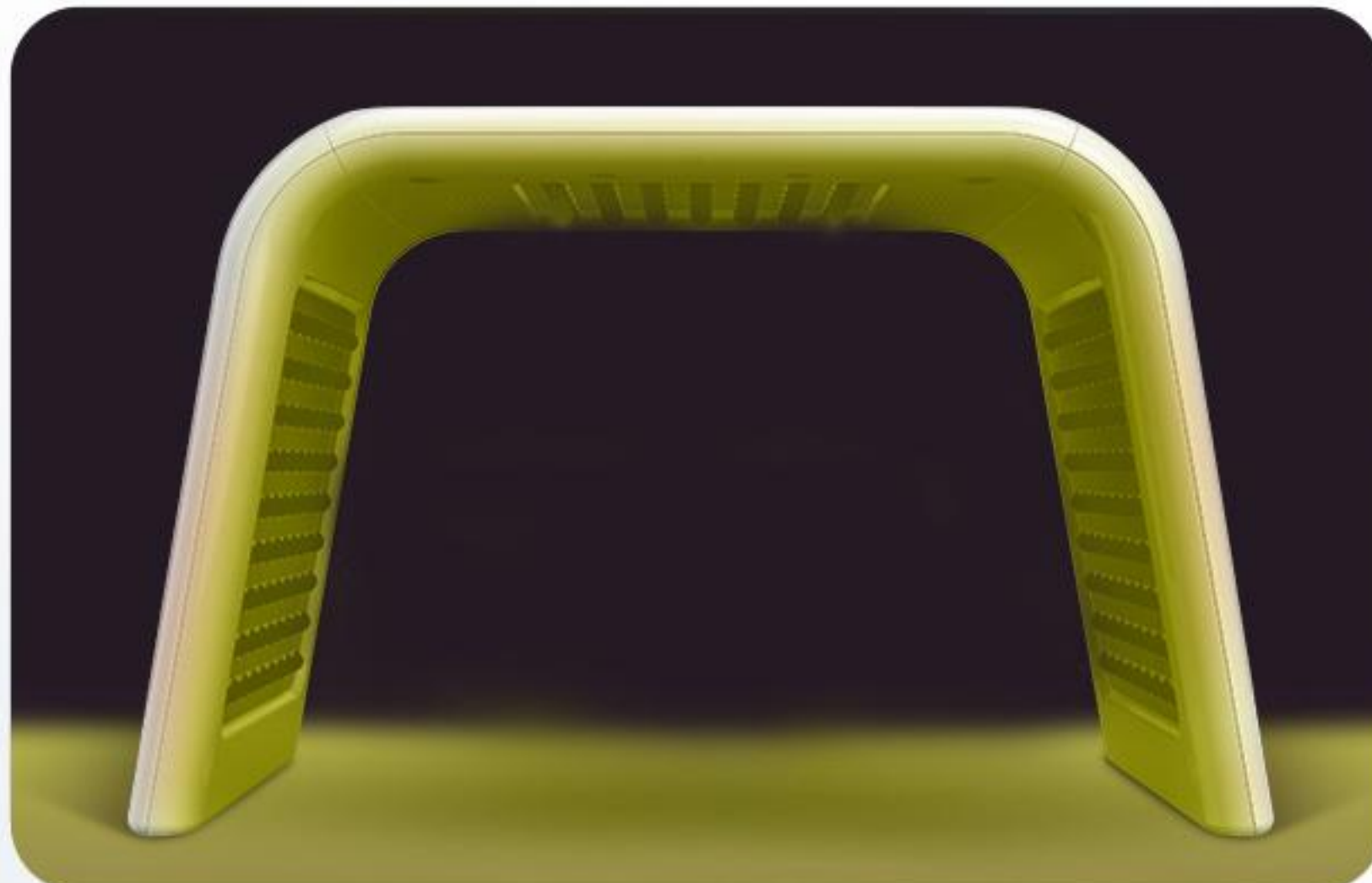
### Ⓠ Green Light Button (Wavelength 492-550nm)

Press this button to activate the green light function. The green light button on the display screen will illuminate. Continued pressing will turn off the function as the button's display light goes off.



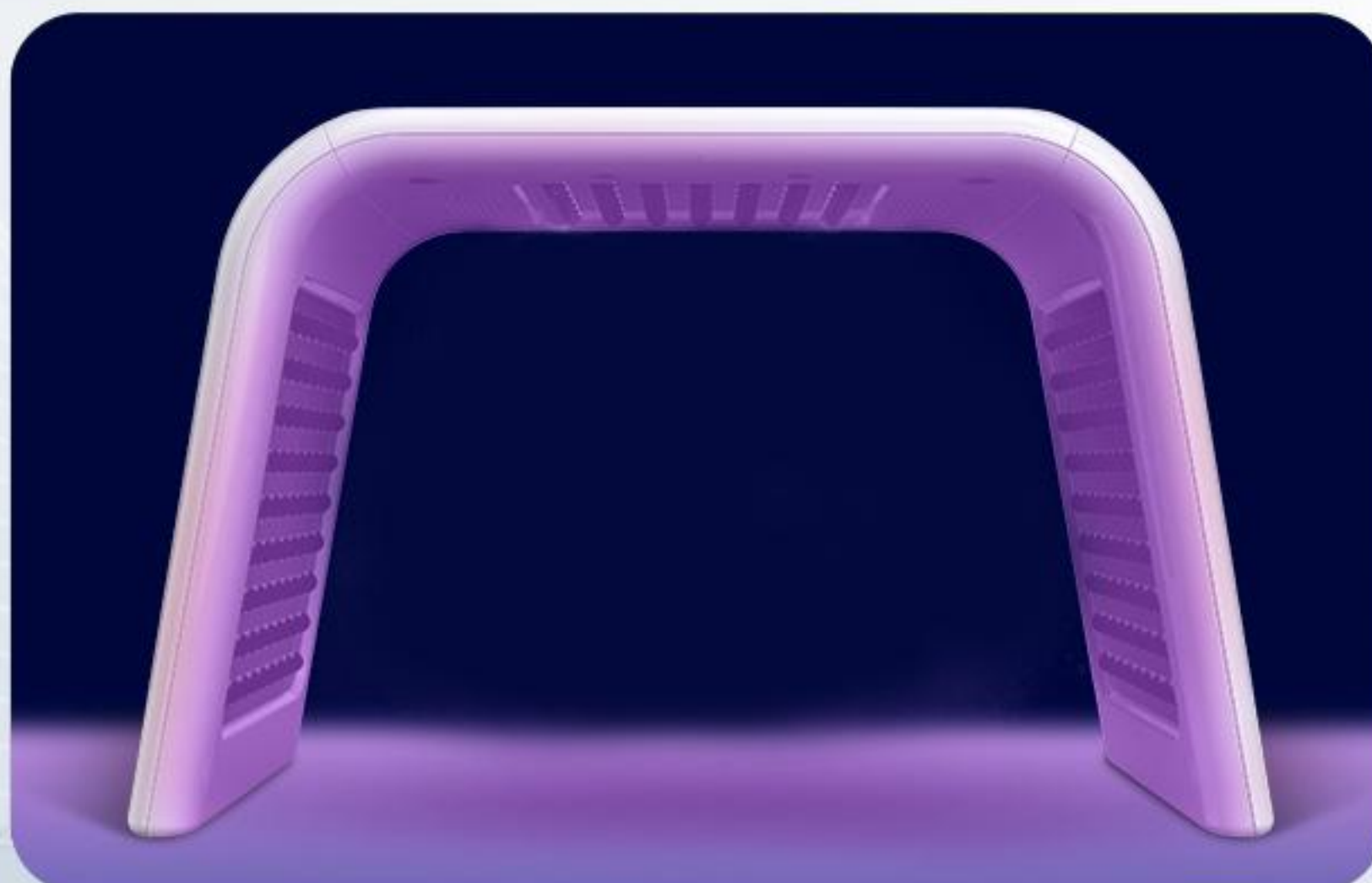
© **Cyan Light Button (Wavelength 490-520nm):**

Press the COLOR button to activate the cyan light function. Continued pressing COLOR allows you to switch between different colored lights. Starting from the first press, the sequence of lights is as follows: yellow light, cycle light, red light, green light, blue light, yellow light, purple light, cyan light, white light.



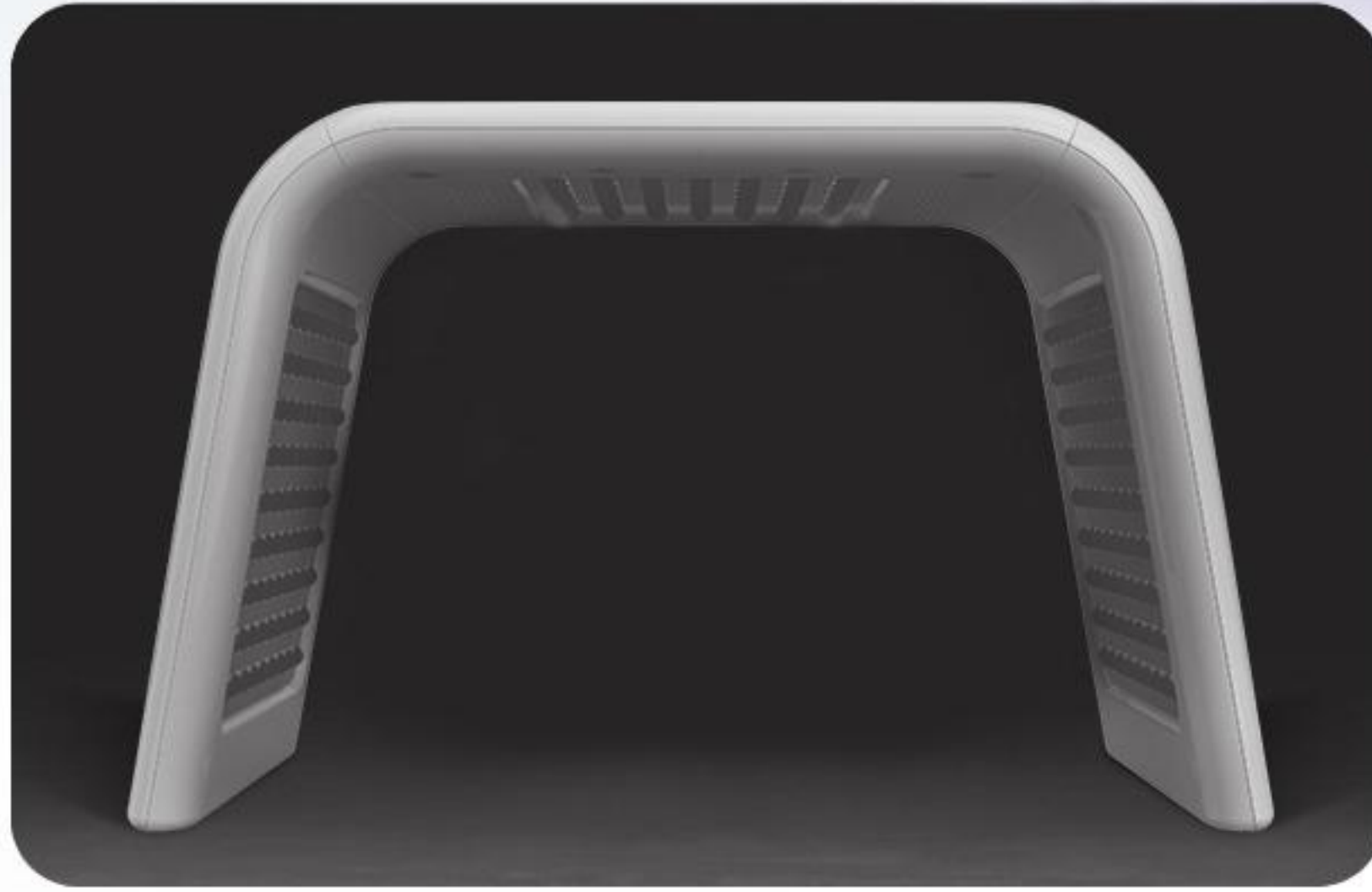
© **Yellow Light Button (Wavelength 550-580nm):**

Press the COLOR button to activate the yellow light function. Continued pressing COLOR allows you to switch between different colored lights. Starting from the first press, the sequence of lights is as follows: yellow light, cycle light, red light, green light, blue light, yellow light, purple light, cyan light, white light.



© **Purple Light Button (Wavelength 360-430nm):**

Press the COLOR button to activate the purple light function. Continued pressing COLOR allows you to switch between different colored lights. Starting from the first press, the sequence of lights is as follows: yellow light, cycle light, red light, green light, blue light, yellow light, purple light, cyan light, white light.



## © White Light Button (Wavelength 430-647nm)

Press the COLOR button to activate the white light function. Continued pressing COLOR allows you to switch between different colored lights. Starting from the first press, the sequence of lights is as follows: yellow light, cycle light, red light, green light, blue light, yellow light, purple light, cyan light, white light.

## 🌀 Fan Function Button

Press this button to activate the fan function. The fan button on the display screen will illuminate. Continued pressing will turn off the function as the button's display light goes off.

## ⬆️ TIME Button

The default startup time is 20 minutes. After selecting the lighting mode, press this button, and the time decreases (or increases) by 5 minutes, which can be continuously adjusted within a time range of 00-60 minutes. If there is no key operation, the instrument will automatically exit the setting state after 3 seconds and start working at the currently set working time.

## Precautions During Use:

- 1.It is forbidden to look directly at any type of light emitted by the machine. When irradiating the face, it is recommended to wear sunglasses or light-shielding goggles.
- 2.Patients with allergic skin should carefully conduct a small-scale test on a hidden area of the skin. It can only be used on a larger area if there is no allergic reaction.
- 3.If you feel unwell after using this product, you should stop using it immediately and allow your body to recover. When you use it again, follow the principle of short-time and multiple-frequency irradiation before using it regularly, allowing your body to gradually adapt.
- 4.The machine should be placed in a cool, dry, and well-ventilated place where children cannot easily access it. It is forbidden to place it in an environment with direct sunlight, high humidity, high temperature, strong acids, strong alkalis, strong oxidants, or excessive dust.
- 5.Do not pour water on the instrument, and avoid operating the machine with wet hands.
- 6.Please maintain a certain distance from other electrical appliances and keep away from strong magnetic interference, inflammable and explosive materials (such as gasoline, diesel, fireworks, etc.).
- 7.When cleaning the machine, gently wipe it with a dry or damp towel. Do not use strong acid or alkali chemical reagents. Gaps or recessed areas can be cleaned with a soft brush.
- 8.It is forbidden to impact, wrestle, throw, or slap the machine. Do not place any objects on the instrument, including but not limited to mobile phones, bank cards/access cards, and other magnetic cards.
- 9.It is forbidden to insert conductive objects such as screws and wires into the machine to avoid burning, short circuits, fires, and electric shocks.
- 10.Minors and individuals without autonomous sensory perception or expressive abilities should use the machine with the care and assistance of individuals with normal operation and perception abilities or follow the advice of a doctor.
- 11.It is forbidden to use unofficial accessories, modify, or disassemble the machine. The above precautions are not covered by the warranty.

## Product Specification

Product Name	Megelin LED Light Therapy Machine
Product Type	Standard
Power Supply	DC 12V, 4A, 50Hz/60Hz
Power	Approximately 45W
Product Size	455×220×315 mm
Product Weight	1.6 kg ± 10%

## Maintenance Management

Clean the controller or body with a gentle towel.  
When storing the product for an extended period, disconnect the power supply and avoid storing it in a high humidity environment. Keep the folding support in place when storing the product, and fold it after stowing.

### Note:

During maintenance and management, the user must disconnect the power supply of the instrument and disconnect the power cord. Turning on the power during cleaning or storage can lead to abnormal equipment operation.



Expanded state



Folding state

## Items to be confirmed before fault application

Patch	Estimate the reason	Confirm items
Abnormal of power supply	Adapter connector poor contact	Confirm power ON/OFF state; Verify that the adapter is connected
Device start abnormal	LED light doesn't work	In the case of power shutdown,replace the corresponding LED disksurface; (Contact purchasing agent/service center to change the light)
	The actuator is abnormal	Contact purchasing agent/service center

## Guarantee

### Free Warranty

- 1.Any fault occurring under normal use within one year after purchasing the product is eligible for free service.
- 2.The free warranty only covers the device body.

### Exclusions from Warranty During the Free Warranty Period

If you do not follow the device startup steps and safety and management guidelines as indicated in this manual, you will not be eligible for free service. Please pay attention to the following:

- 1.Damage caused by forcibly moving the device and pulling the adapter is not covered under the free warranty period.
- 2.If the user uses the equipment for purposes other than intended or attempts to disassemble it, it will be excluded from the free warranty period.

## Matters needing attention

- ※ This product is manufactured after strict quality management and inspection process.
- ※ This certificate must be provided for free maintenance.
- ※ The manufacturer shall provide free maintenance service for the faults occurring under the scope of normal use by consumers within the maintenance period.
- ※ If the product is within the maintenance period, but the failure is caused by not using the original power supply, improper use by the operator, arbitrary disassembly of the instrument, self disassembly, repair and transformation of the internal structure, and the failure is caused by man-made damage or slapping, the manufacturer has the right not to give maintenance and charge relevant parts fees.
- ※ The second copy of the product warranty will not be provided again, so it must be kept properly.

MODEL		WARRANTY	
PRODUCT NAME			
DATE OF PURCHASE			
CORPORATE NAME			
MAILING ADDRESS			
FULL NAME			



**MEGELIN**

LED Light Therapy Machine