

Cleaning the Top Vent and In Flow Vent

The Top Vent of your OxyPure can be removed to clean with a vacuum with a brush attachment or cleaned in mild soapy water and dried thoroughly.

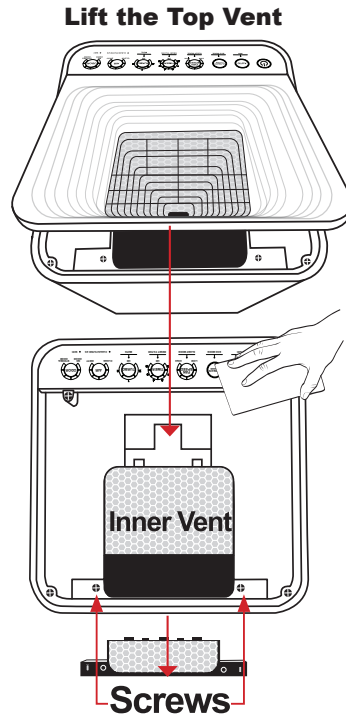
Depending on the environment the OxyPure is placed in, more frequent cleaning may be needed.

1. Turn off and unplug the OxyPure.
2. Use a vacuum with a brush attachment to remove any dust and debris.
3. If needed, use a paper towel or cloth slightly dampened to remove heavier buildup. Do not use any harsh abrasives or cleaning pads on the Top Vent or any other part of the OxyPure.

To clean fan area or check for a foreign object

1. Remove the screws as shown and set on the magnetic strip.
2. Lift off the vent as shown.
3. Can wipe the side walls with a cloth or duster.
4. Replace the vent and screws

Note: Careful to unscrew at the small inner vent, as not to void the warranty.



nuwave[®]
OXYPURE ZERO[®] PLUS

©2024 NuWave[®] LLC • All Rights Reserved.
Item: BQ47602 • Rev.1-V3-JL • 07-03-24

NuWave[®] Connect App (Optional)

The OxyPure is equipped to operate using **WI-FI**. This allows you to conveniently operate your new air purifier from nearly any location, whether at home or while you are out and about, as long as you have a reliable Internet connection.

Download the NuWave Connect App

This is an optional feature that is not required to operate your OxyPure.

Using the QR reader in your Camera App:

1. Scan the QR code below.



2. It will take you to the App's download page on either the Google Play Store or the Apple AppStore, then just follow the download and installation instructions.

Downloading a QR reader App:

If your phone doesn't have that capability built-in, simply download a 3rd-Party QR Scanning App before scanning the NuWave QR Codes and you are ready to go.

1. Open your devices' mobile app store (Apple App Store or the Google Play Store).



2. Search for "QR code readers."
3. Simply download the QR code reader to your phone, open it, scan the code and you are ready to go.



Auto Scan Mode

1. Once you download the NuWave[®] Connect app, ensure your phone is connected to your home Wi-Fi network on the 2.4GHz or 5GHz frequency and that your phone's Bluetooth is on.
2. Turn on the OxyPure and activate Wi-Fi Pairing Mode by pressing and holding **AUTO** until the light next to the **Wi-Fi** symbol begins to blink rapidly.
3. In the NuWave[®] Connect app, tap the **+** symbol, then tap **Auto Scan** and select your device.
4. Enter your **Wi-Fi** network's password and tap Confirm. If the connection is successful, the app will display "Added Successfully" on the screen.

WiFi LED Status Light Pairing Mode & Standby Mode

Solid Light.

The OxyPure is paired with the wifi network and ready to be used.

Rapid Blinking Light.

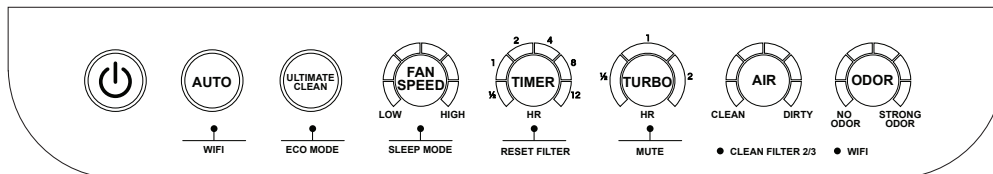
The OxyPure is in Pairing Mode.
The OxyPure will stay in Pairing Mode for up to 10 minutes or until your device is paired.

Slowly Blinking Light.

The OxyPure is in AP Pairing Mode.

EPA Establishment Number: 101594-CHN-1

Customer Service: For Amazon Purchases: support@nuwavenow.com • For All Other Purchases: help@nuwavenow.com



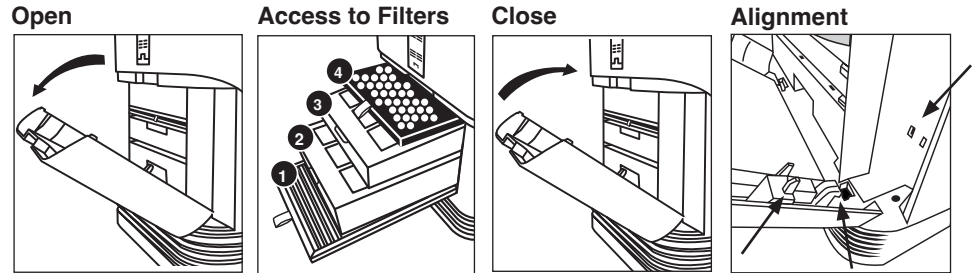
Quick Start Guide

Model No: 47602 (Refer to the Owner's Manual for more details.)

Button	Name	Function	Use
	POWER	Turns the OxyPure on and off.	Press POWER to turn the OxyPure on and off. The Power button will be lit red when on standby mode and green when on.
	AUTO	Allows your Oxypure to automatically adjust the fan speed.	Press AUTO to turn on the function. Press AUTO again to turn off the function. (There is no time limit for Auto, however it cannot run with Fan Speed and Ultimate Clean).
	WIFI	Allows you to connect the OxyPure to your Wi-Fi network.	Press and hold AUTO to initiate Wi-Fi pairing.
	ULTIMATE CLEAN	Allows your Oxypure to automatically adjust to the highest fan speed based on your air quality.	Press ULTIMATE CLEAN to activate the function. Press ULTIMATE CLEAN again to turn off the function. (There is no time limit for Ultimate clean, however it cannot run with Auto).
	ECO MODE	Allows you to save energy by keeping the OxyPure fan off until it's needed.	Press and hold ULTIMATE CLEAN for 2 seconds to turn on the function. The Power button will be lit yellow while function is on. Press and hold ULTIMATE CLEAN again to turn off the function.
	FAN SPEED	Allows you to adjust the Oxypure's fan speed.	There are 6 different fan speeds. Press FAN SPEED to adjust from Speed 1 (lowest) to Speed 6 (highest). (Fan Speed cannot run with Auto or Turbo).
	SLEEP MODE	Allows you to turn off the control panel LED lights while still keeping the fan active.	Adjust the Fan Speed prior to activating Sleep Mode. Press and hold FAN SPEED for 2 seconds to activate the function. To turn off the function press any button.
	TIMER	Allows you to choose the Oxypure's duration of operation.	Press TIMER to select from the six different timer settings of 1/2, 1, 2, 4, 8 or 12 hours. To turn off the function press TIMER until no bars are lit.
	RESET FILTER	Resets the clean filter 2/3 indicator light after the filters have been cleaned.	Press and hold TIMER for 2 seconds until 2 beeps are heard to clear the clean filter 2/3 indicator light.
	TURBO	Allows you to operate the Oxypure at the highest fan speed for a selected amount of time.	Press TURBO to set the OxyPure to run at the highest fan speed for 1/2, 1 or 2 hours. To add more time press TIMER . To turn off the function press TURBO until no bars are lit.
	MUTE	Allows you to mute the OxyPure beep sounds.	Press and hold TURBO for 4 seconds until 2 beeps are heard. Repeat to unmute.
	AIR	Air Quality Indicator	The color-coded display shows the current particulate matter level in the air. See manual page 9 for more details.
	ODOR	Odor Indicator	The color-coded display shows the current odor level in the air. See manual page 9 for more details.

Before Use

1. Make sure the OxyPure is unplugged. Open the Filter Slot Cover on the back to expose the filters.
2. Remove all tape and pull the filters from their slots using the tabs or handles.
3. Remove the plastic wrapping from the ① Stainless Steel Pre-filter and the ④ Ozone Emission Removal Filter. (Bio-Guard® filters are not wrapped.)
4. Fully reinsert the filters into the OxyPure and close the Filter Slot Cover.
5. Remove the sticker from the control panel.
6. Remove the sticker from the control panel.

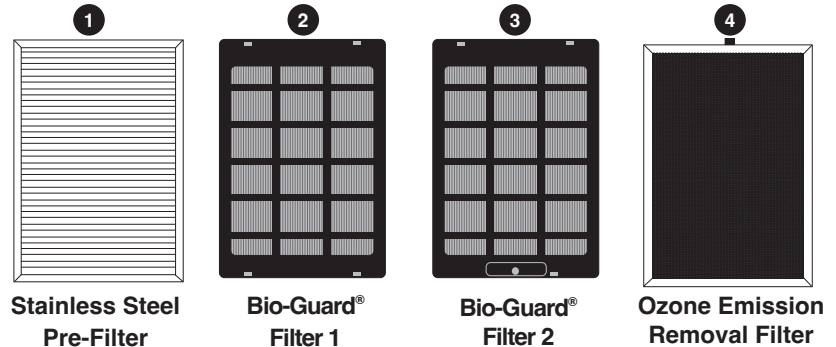


Note: If you are unable to close the Filter Access Panel for any reason, the OxyPure will not operate and you will need to contact NuWave Customer Service*. **Exercise caution to ensure the tabs are not damaged when securing the Filter Access Panel.**

Air Filter Assembly

When maintaining the filters, unplug the unit and open the Filter Access Panel. You will see that the order of the filters, from the bottom to top are as follows:

- ① **Stainless Steel Pre-filter (Washable and Reusable)**
 - Captures and collects large particles and allergens including pet hair, dander, and pollen.
- ② **Bio-Guard® Filter 1 (Washable and Reusable)**
 - 8,000V, charges particles either positively or negatively to capture as small as 0.1 microns including smoke, pollen, and allergens.
- ③ **Bio-Guard® Filter 2 (Washable and Reusable)**
 - 8,000V, charges particles either positively or negatively to capture as small as 0.1 microns including smoke, pollen, and allergens.
- ④ **Ozone Emission Removal Filter (Reusable. Clean but DO NOT wash)**
 - Eliminate ozone emissions and other harmful airborne chemicals including VOCs and formaldehyde.



Stainless Steel
Pre-Filter

Bio-Guard®
Filter 1

Bio-Guard®
Filter 2

Ozone Emission
Removal Filter

CAUTION

Unplug the OxyPure® from the power source before inserting or removing any parts or attachments and before cleaning.

WARNING

Do Not immerse, wash, or wipe with water this will result in permanent damage to the Ozone Filter. It must be replaced!

Customer Service:

For Amazon Purchases: support@nuwavenow.com

For All Other Purchases: help@nuwavenow.com

Cleaning & Maintenance

Depending on the environment the OxyPure is placed in, more frequent cleaning may be needed.

Cleaning the Stainless Steel Pre-Filter

The Pre-Filter collects large particles and will need to be cleaned at least once every two months depending on use. The filter can be cleaned using a vacuum with a brush attachment or in warm soapy water.

1. Remove the Filter from slot **1**.
2. Use a vacuum with a brush attachment and vacuum up and down then side to side.
3. Flip and repeat to vacuum the other side of the Filter. **OR**
 1. Clean the Filter with warm soapy water.
 2. Rinse the Filter thoroughly until the water is clear, and remove any soap particles.
 3. Allow the Filter to air dry completely BEFORE placing it back into the OxyPure (drying can take up to 12-24 hours).

Cleaning the Ozone Emission Removal Filter

1. Remove the Filter from slot **4**.
2. Use a vacuum with a brush attachment and vacuum up and down then side to side.
3. Flip and repeat to vacuum the other side of the Filter.
4. Repeat this process on the other side.

Cleaning the Bio-Guard® Filters

1. Remove the Filter from slots **2** + **3**.
2. Spray both sides of the Filter with a mild degreaser or dish soap and set aside for 2-3 minutes in the sink or a cleaning tote caddy.
3. Lift Filter to drain excess cleaner. Submerge the Filter in warm water. Shake and flip to rinse.
4. Continue shaking and flipping in warm water until the water is clear. (The water may need to be changed several times).
5. Drain all excess water by turning filter.
6. Allow the Filter to air dry completely BEFORE placing it back into the OxyPure (drying can take up to 12-24 hours).

Note: The Bio-Guard™ Filter may discolor and retain odor after prolonged exposure to thick smoke and strong odors. This prolonged exposure will require more frequent cleanings to ensure maximum filtration efficiency.

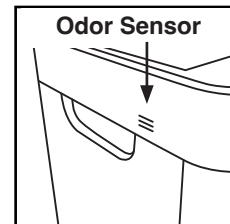
COLORS OF CLEAN FILTER 2/3 light:

Clean Filter 2 and 3 Schedule		
3 Months	Yellow	Routine Cleaning
6 Months	Orange	Should clean for optimal efficiency
12 Months	Red	For optimal performance especially if the first 2 cleanings were missed

Cleaning the Odor Sensor Opening

The Odor Sensor is located on the upper right side corner of the OxyPure underneath the small grill opening.

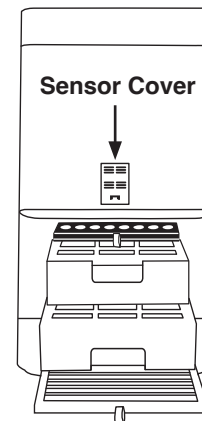
1. Wipe with a clean cloth any dirt or debris.
- **DO NOT** tamper or spray inside or near the odor sensor. this may cause the sensor to malfunction and void the warranty.
 - Keep the Odor Sensor clear of dust and debris by cleaning with a vacuum brush attachment.
 - **DO NOT** tamper or spray inside or near the odor sensor. This may cause the sensor to malfunction and will void the warranty.



Cleaning the Filter Sensor

The Filter Sensor is located on the back, above the Filter Slot Cover. The Dust Sensor requires regular cleaning (approximately every 3 months) for the unit to operate efficiently.

1. Open the Dust Sensor Cover.
 2. Using a dry cotton swab remove any dirt or dust from the Dust Sensor. Can use a slightly wet cotton swab for heavy buildup.
 3. Remove any moisture with a dry cotton swab.
- If your OxyPure is set up in an area with high dust accumulation, more frequent cleaning of the Filter Sensor is needed.
 - **DO NOT** use the cotton swab on any part or area other than the Filter Sensor.



Master Your OxyPure Zero

Scan the code to watch how-to videos and more!