

SPA TOTAL ALKALINITY TEST PROCEDURE

(FOR WATER TEMPERATURE >95°F / 35°C)

The SPA Total Alkalinity test procedure utilizes the **STANDARD SPA STRIP METHOD** using the eXact iDip® Smart Photometer System®. For tips on achieving best accuracy, and additional information regarding features of the eXact iDip® photometer and the eXact iDip® app, please refer to the eXact iDip® Smart Guide. You can download a copy on our website at exactidip.com. **Test procedures can vary from test to test. Read full instructions and watch instructional video within the app.**

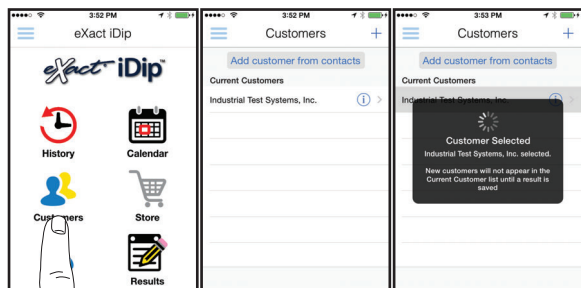
YOU WILL NEED

- eXact iDip® photometer
- Your smartphone/tablet with the eXact iDip® app installed and SPA Alkalinity, Total AL test purchased in the Store
- (1) eXact® Strip Micro Total Alkalinity (Part No. 486641)
- Water sample for rinsing and testing

1 SELECT CUSTOMER

- Select **'Customers'** from the Home screen.
- Choose customer from list
 - OR** Tap **'Add customer from contacts'** and choose customer from your contacts list
 - OR** Tap **'+'** to create a new customer
- Android users: If no address is found, tap "No addresses found"
- Verify customer has been selected

Note: To take full advantage of the GPS and Data Storage features, each test result must be linked to a contact. Individual users may select their contact listing.



a

b

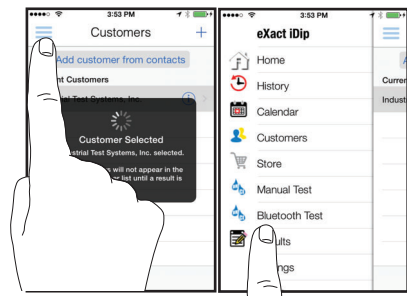
c

2 POWER ON EXACT IDIP®

Press the **ZERO/ON** button to power on the eXact iDip® photometer.

3 SELECT BLUETOOTH TEST

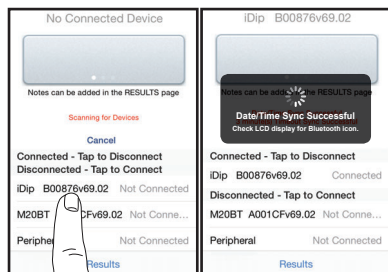
Tap the menu slide out **'≡'** and select **'Bluetooth Test'** from the choices shown.



4 CONNECT EXACT IDIP®

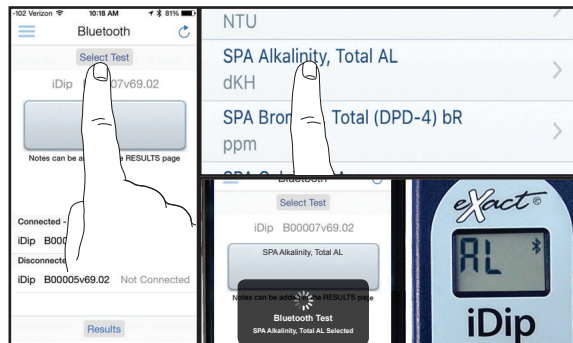
The eXact iDip® app will automatically connect to the most recently used eXact iDip® photometer. If not, select your eXact iDip® from the bottom of the screen.

Note: Always connect your eXact iDip® photometer via the Bluetooth® connection within the app. If you experience an issue connecting your device, check that your smartphone/tablet's Bluetooth® is turned on and your device is compatible.



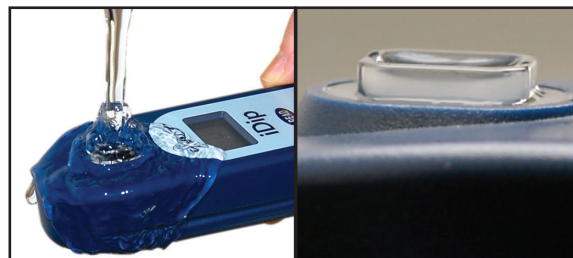
5 SELECT TEST

Tap **'SELECT Test'** at the top and select **SPA Alkalinity, Total AL**. The eXact iDip® photometer and eXact iDip® app will both display the test selection for Total Alkalinity.



6 FILL CELL

Before testing, rinse CELL and clean with brush thoroughly. Finally, rinse the cell 3 times with the water sample to be tested, then **FILL** cell to capacity to begin test (refer to video in app).



7 CAP CELL AND ZERO METER

Place the Cell Cover onto the CELL and press **ZERO/ON** and the eXact iDip® photometer display reads **0 PPM** indicating the meter is ready for testing.



8 REMOVE STRIP

Remove one eXact® Strip Micro Total Alkalinity (Part No. 486641) and set in a dry, convenient place. Immediately replace cap on bottle.



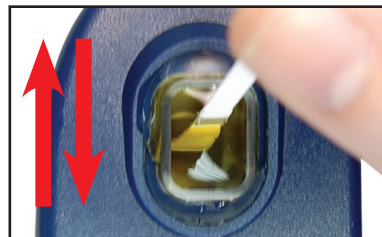
9 DIP STRIP

Press **READ** to initiate a 10 second countdown and simultaneously **DIP** the eXact® strip in the sample, gently touching the bottom of the cell. Use a gentle constant back and forth motion (2 strokes per second) until the timer displays "1". Remove and discard the strip.



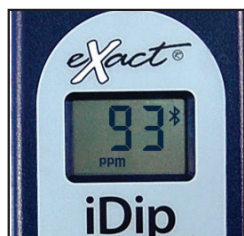
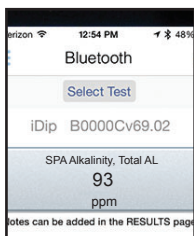
13 DIP STRIP

Press **READ** to initiate a 10 second countdown and simultaneously **DIP** the eXact® strip in the sample, gently touching the bottom of the cell. Use a gentle constant back and forth motion (2 strokes per second) until the timer displays "1". Remove and discard the strip.



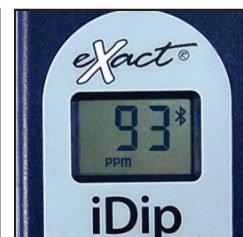
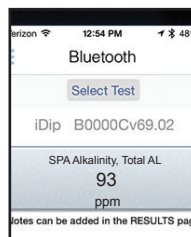
10 CAP CELL AND READ RESULTS

Place the Cell Cover onto the CELL and **READ** result displayed as Total Alkalinity. **NOTE:** If result is "HI", then value is >200ppm. If a value is required proceed to step 11. Otherwise, proceed to step 15.



14 CAP CELL AND READ RESULTS

If result is still "HI" repeat steps 12-13 until a value is obtained. Count how many AL Range Extender strips were used. Each strip adds 130ppm to the final result. For example: After dipping one AL Range Extender strip the result reads 93ppm. The final result would be calculated as 223ppm (130 + 93 = 223). This value can be added as a Note by tapping on the result in the Results section.



11 AL RANGE EXTENDER

If result from step 10 is "HI", and a value is required, **YOU WILL NEED** to purchase eXact® Strip Micro AL Range Extender (Part No. 486665). If you already have AL Range Extender strips, proceed to step 12.



15 CLEAN CELL WITH BRUSH

After testing, rinse CELL immediately and clean with brush to remove reagents which coat the CELL wall.



12 REMOVE STRIP

Remove one eXact® Strip Micro AL Range Extender (Part No. 486665) and set in a dry, convenient place. Immediately replace cap on bottle.



TIPS

- Due to the manufacturing process, you may find one or two strips that are noticeably smaller or larger in width than the normal strips in the bottle. These should be discarded. Using these strips may give unreliable results.
- Before running test unlock SPA Total Alkalinity test by purchasing in the Store.
- Always fill the CELL to capacity.
- Be careful while dipping the strip (steps 9 & 13). Do not spill the sample from the CELL.

MANAGE YOUR RESULTS

Save, send, and share results instantly using the eXact iDip® app. For step-by-step instructions, refer to the eXact iDip® Smart Guide. You can download a pdf copy on-line at exactdip.com.

