

# NITRATE, FRESH WATER TEST PROCEDURE

1



The Nitrate test procedure utilizes the **STANDARD STRIP METHOD** using the eXact iDip® Smart Photometer System®. For tips on achieving best accuracy, and additional information regarding features of the eXact iDip® photometer and the eXact iDip® app, please refer to the eXact iDip® Smart Guide. You can download a copy on our website at [exactidip.com](http://exactidip.com). **Test procedures can vary from test to test. Read full instructions and watch instructional video within the app.**

## YOU WILL NEED

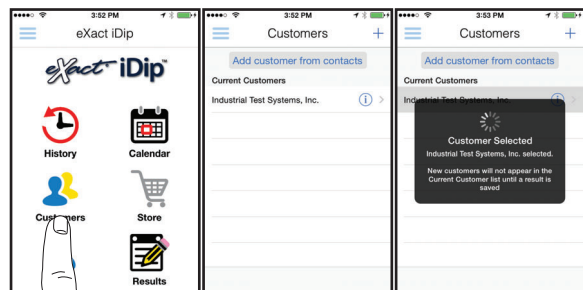
- eXact iDip® photometer
- Your smartphone/tablet with the eXact iDip® app installed and Nitrate, Fresh NO3 test purchased in the Store
- (1) eXact® Strip Micro Nitrate (Part No. 486655)
- Water sample for rinsing and testing

## 1 SELECT CUSTOMER

- Select '**Customers**' from the Home screen.
- Choose customer from list  
**OR** Tap '**Add customer from contacts**' and choose customer from your contacts list  
**OR** Tap '+' to create a new customer
- Android users: If no address is found, tap "No addresses found"

c. Verify customer has been selected

*Note: To take full advantage of the GPS and Data Storage features, each test result must be linked to a contact. Individual users may select their contact listing.*



a

b

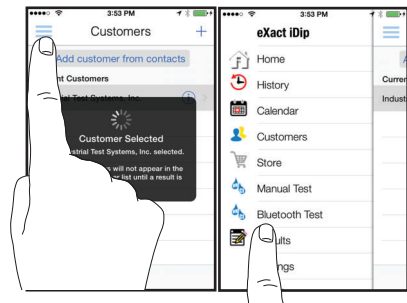
c

## 2 POWER ON EXACT IDIP®

Press the **ZERO/ON** button to power on the eXact iDip® photometer.

## 3 SELECT BLUETOOTH TEST

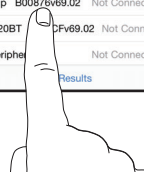
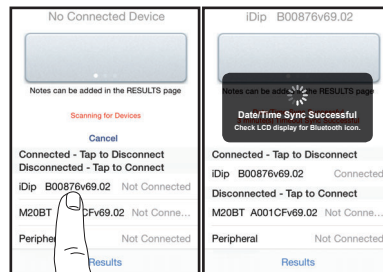
Tap the menu slide out '≡' and select 'Bluetooth Test' from the choices shown.



## 4 CONNECT EXACT IDIP®

The eXact iDip® app will automatically connect to the most recently used eXact iDip® photometer. If not, select your eXact iDip® from the bottom of the screen.

*Note: Always connect your eXact iDip® photometer via the Bluetooth® connection within the app. If you experience an issue connecting your device, check that your smartphone/tablet's Bluetooth® is turned on and your device is compatible.*



## 5 SELECT TEST

Tap '**SELECT** Test' at the top and select **Nitrate, Fresh NO3** (if this is not visible, purchase the test from the Store). The eXact iDip® photometer and eXact iDip® app will both display the test selection for **Nitrate**.



## 6 FILL CELL

Before testing, rinse CELL and clean with brush thoroughly. Finally, rinse the cell 3 times with the water sample to be tested, then **FILL** cell to capacity to begin test (refer to video in app).



## 7 CAP CELL AND ZERO METER

Place the Cell Cover onto the CELL and press **ZERO/ON** and the eXact iDip® photometer display reads 0 PPM indicating the meter is ready for testing.



## 8 REMOVE STRIP

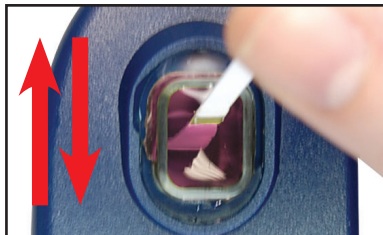
Remove one eXact® Strip Micro Nitrate (Part No. 486655) and set in a dry, convenient place. Immediately replace cap on bottle.



## 9 DIP STRIP

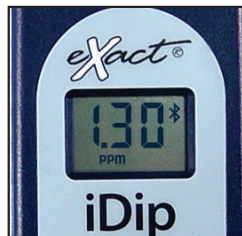
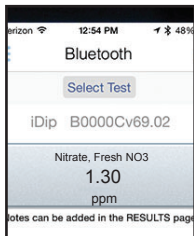
Press **READ** to initiate a 20 second countdown and simultaneously **DIP** the eXact® strip in the sample, gently touching the bottom of the cell. Use a gentle constant back and forth motion (2 strokes per second) until the timer displays "1". Remove and discard the strip.

The eXact iDip® photometer will now display a 600 second count-up timer. Make sure your smart device does not go to sleep.



## 10 CAP CELL AND READ RESULTS

Place the Cell Cover onto the CELL and **READ** result displayed as Nitrate.



## 11 CLEAN CELL WITH BRUSH

After testing, rinse CELL immediately and clean with brush to remove reagents which coat the CELL wall.



### TIPS

- Due to the manufacturing process, you may find one or two strips that are noticeably smaller or larger in width than the normal strips in the bottle. These should be discarded. Using these strips may give unreliable results.
- Before running test unlock Nitrate test by purchasing in the Store.
- To obtain optimal accuracy when testing in direct sunlight, use the Cell Cover when zeroing and reading the sample.
- It is recommended to use the Cell Cleaning Brush with water to clean the CELL after each test to remove reagents which coat the CELL wall.
- Be careful while dipping the strip (step 9). Do not spill the sample from the CELL.

### MANAGE YOUR RESULTS

Save, send, and share results instantly using the eXact iDip® app. For step-by-step instructions, refer to the eXact iDip® Smart Guide. You can download a pdf copy on-line at [exactdip.com](http://exactdip.com).

