

# 570 PH-BT, FRESH TEST PROCEDURE



The 570 pH-BT, Fresh test procedure utilizes the **STANDARD LIQUID METHOD** to accurately achieve a pH reading with the eXact iDip® 570 Smart Photometer System®. For tips on achieving best accuracy, and additional information regarding features of the eXact iDip® 570 photometer and the eXact iDip® app, please refer to the eXact iDip® Smart Guide. You can download a copy on our website at [exactdip.com](http://exactdip.com). **Test procedures can vary from test to test. Read full instructions and watch instructional video within the app.**

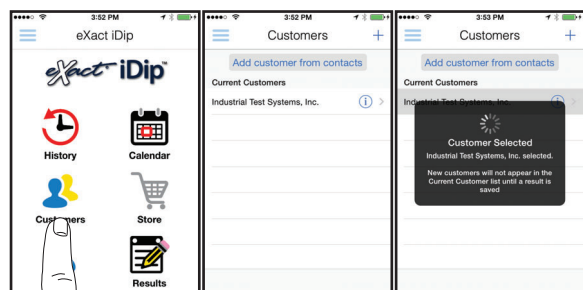
## YOU WILL NEED

- eXact iDip® 570 photometer
- Your smartphone/tablet with the eXact iDip® app installed
- 2 drops eXact® Reagent P-pH (Part No. 486657)
- Water sample for rinsing and testing

## 1 SELECT CUSTOMER

- Select '**Customers**' from the Home screen.
- Choose customer from list  
**OR** Tap '**Add customer from contacts**' and choose customer from your contacts list  
**OR** Tap '+' to create a new customer
- Android users: If no address is found, tap "No addresses found"
- Verify customer has been selected

*Note: To take full advantage of the GPS and Data Storage features, each test result must be linked to a contact. Individual users may select their contact listing.*



a

b

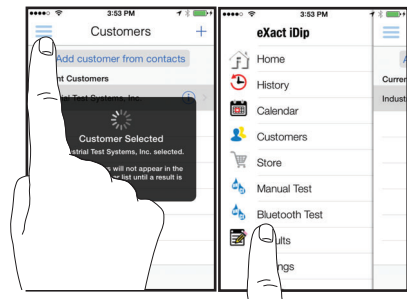
c

## 2 POWER ON EXACT IDIP® 570

Press the **ZERO/ON** button to power on the eXact iDip® 570 photometer.

## 3 SELECT BLUETOOTH TEST

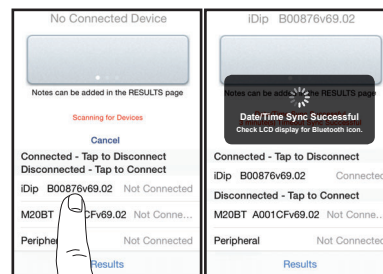
Tap the menu slide out '≡' and select 'Bluetooth Test' from the choices shown.



## 4 CONNECT EXACT IDIP® 570

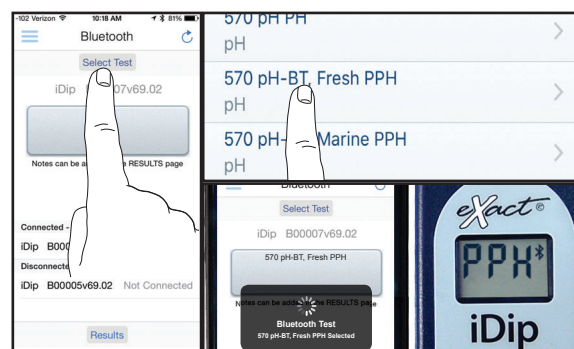
The eXact iDip® app will automatically connect to the most recently used eXact iDip® 570 photometer. If not, select your eXact iDip® 570 from the bottom of the screen.

*Note: Always connect your eXact iDip® photometer via the Bluetooth® connection within the app. If you experience an issue connecting your device, check that your smartphone/tablet's Bluetooth® is turned on and your device is compatible.*



## 5 SELECT TEST

Tap '**SELECT** Test' at the top and select **570 pH-BT, Fresh PPH** (if this is not visible, purchase the test from the Store). The eXact iDip® 570 photometer and eXact iDip® app will both display the test selection for pH-BT.



## 6 FILL CELL

Before testing, rinse CELL and clean with brush thoroughly. Finally, rinse the cell 3 times with the water sample to be tested, then **FILL** cell to capacity to begin test (refer to video in app). Tilt meter to remove about 0.2mL of sample to leave room for liquid reagent.



## 7 CAP CELL AND ZERO METER

Place the Cell Cover onto the CELL. Press **ZERO/ON** and the eXact iDip® 570 photometer display reads 0<sub>PPM</sub> indicating the meter is ready for testing.



## 8 SHAKE REAGENT

Shake the bottle of eXact® Reagent P-pH.

## 9 ADD DROPS

Remove the Cell Cover and add **2 drops** of eXact® Reagent P-pH (Part No. 486657). Ensure the reagent bottle remains vertical while adding drops.



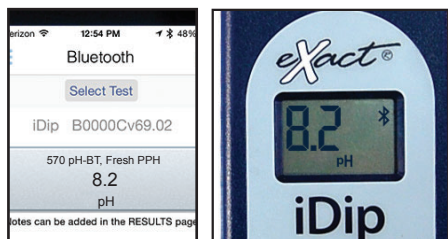
## 10 COVER & MIX

Place the Cell Cover onto the CELL. Press **READ** to initiate a 20 second countdown. Turn the meter **upside-down** repetitively to mix the sample during the 20 second countdown. When the timer displays "1", place the eXact iDip® 570 photometer on a flat surface.



## 11 READ RESULTS

**READ** result displayed as pH. After testing is complete, rinse CELL immediately.



## 12 CLEAN CELL WITH BRUSH

After testing, rinse CELL immediately and clean with brush to remove reagents which coat the CELL wall.



### TIPS

- It is recommended to clean the cell thoroughly, with water and the brush provided, before running this test.
- Before running test unlock 570 pH-BT, Fresh PPH test by purchasing in the Store.
- To obtain optimal accuracy when testing in direct sunlight, use the Cell Cover when zeroing and reading the sample.
- It is recommended to use the Cell Cleaning Brush with water to clean the CELL after each test to remove reagents which coat the CELL wall.

### MANAGE YOUR RESULTS

Save, send, and share results instantly using the eXact iDip® app. For step-by-step instructions, refer to the eXact iDip® Smart Guide. You can download a pdf copy on-line at [exactdip.com](http://exactdip.com).



eXact iDip

