

570 METALS TEST PROCEDURE



The 570 Metals test procedure utilizes the **STANDARD LIQUID METHOD** to accurately achieve a Metals reading with the eXact iDip® 570 Smart Photometer System®. For tips on achieving best accuracy, and additional information regarding features of the eXact iDip® 570 photometer and the eXact iDip® app, please refer to the eXact iDip® Smart Guide. You can download a copy on our website at exactdip.com. **Test procedures can vary from test to test. Read full instructions and watch instructional video within the app.**

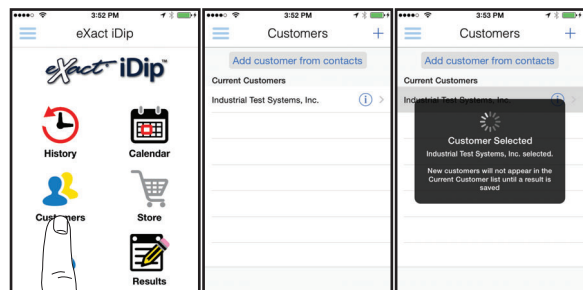
YOU WILL NEED

- eXact iDip® 570 photometer
- Your smartphone/tablet with the eXact iDip® app installed and 570 Metals Mt test purchased in the Store
- 2 drops eXact® Reagent Mt (Part No. 486604)
- Water sample for rinsing and testing

1 SELECT CUSTOMER

- Select '**Customers**' from the Home screen.
- Choose customer from list
OR Tap '**Add customer from contacts**' and choose customer from your contacts list
OR Tap '+' to create a new customer
- Android users: If no address is found, tap "No addresses found"
- Verify customer has been selected

Note: To take full advantage of the GPS and Data Storage features, each test result must be linked to a contact. Individual users may select their contact listing.



a

b

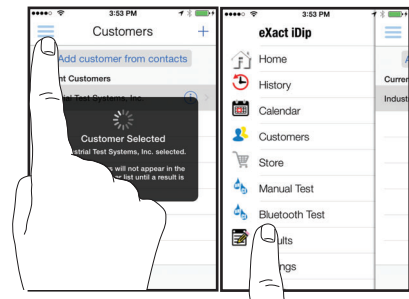
c

2 POWER ON EXACT IDIP® 570

Press the **ZERO/ON** button to power on the eXact iDip® 570 photometer.

3 SELECT BLUETOOTH TEST

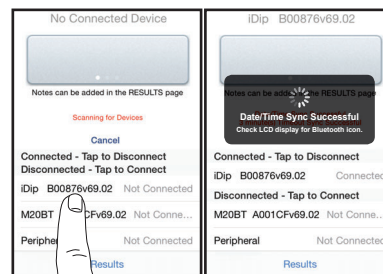
Tap the menu slide out '≡' and select 'Bluetooth Test' from the choices shown.



4 CONNECT EXACT IDIP® 570

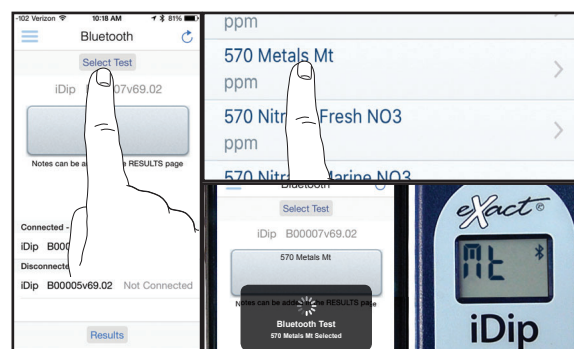
The eXact iDip® app will automatically connect to the most recently used eXact iDip® 570 photometer. If not, select your eXact iDip® 570 from the bottom of the screen.

Note: Always connect your eXact iDip® photometer via the Bluetooth® connection within the app. If you experience an issue connecting your device, check that your smartphone/tablet's Bluetooth® is turned on and your device is compatible.



5 SELECT TEST

Tap '**SELECT** Test' at the top and select **570 Metals Mt** (if this is not visible, purchase the test from the Store). The eXact iDip® 570 photometer and eXact iDip® app will both display the test selection for Metals.



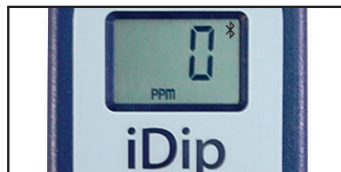
6 FILL CELL

Before testing, rinse CELL and clean with brush thoroughly. Finally, rinse the cell 3 times with the water sample to be tested, then **FILL** cell to capacity to begin test (refer to video in app). Tilt meter to remove about 0.2mL of sample to leave room for liquid reagent.



7 CAP CELL AND ZERO METER

Place the Cell Cover onto the CELL and press **ZERO/ON** and the eXact iDip® 570 photometer display reads 0_{PPM} indicating the meter is ready for testing.



8 SHAKE REAGENT

Shake the bottle of eXact® Reagent Mt.

9 ADD DROPS

Add **2 drops** of eXact® Reagent Mt (Part No. 486604). Ensure the reagent bottle remains vertical while adding drops.



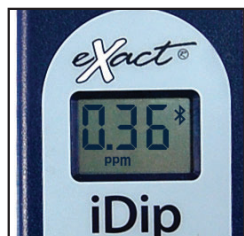
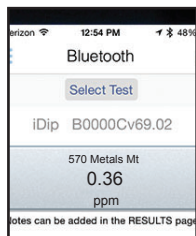
10 COVER & MIX

Place the Cell Cover onto the CELL. Press **READ** to initiate a 20 second countdown. Turn the meter **upside-down** repetitively to mix the sample during the 20 second countdown. When the timer displays "1", place the eXact iDip® 570 photometer on a flat surface. The eXact iDip® 570 photometer will now display a 60 second count-up timer. Make sure your smart device does not go to sleep.



11 CAP CELL AND READ RESULTS

Place the Cell Cover onto the CELL and **READ** result displayed as Metals. After testing is complete, rinse CELL immediately.



12 CLEAN CELL WITH BRUSH

After testing, rinse CELL immediately and clean with brush to remove reagents which coat the CELL wall.



TIPS

- Before running test unlock 570 Metals test by purchasing in the Store.
- To obtain optimal accuracy when testing in direct sunlight, use the Cell Cover when zeroing and reading the sample.
- It is recommended to use the Cell Cleaning Brush with water to clean the CELL after each test to remove reagents which coat the CELL wall.

MANAGE YOUR RESULTS

Save, send, and share results instantly using the eXact iDip® app. For step-by-step instructions, refer to the eXact iDip® Smart Guide. You can download a pdf copy on-line at exactdip.com.



eXact iDip

