



570 TOTAL HARDNESS HIGH TEST PROCEDURE

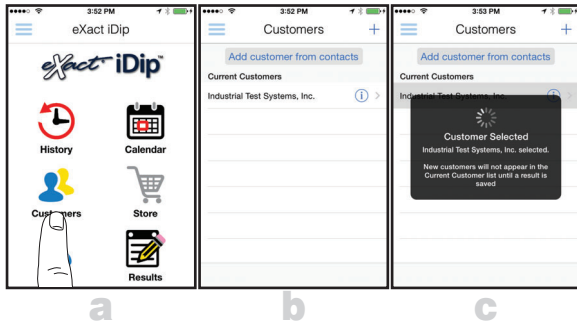
The 570 Total Hardness High test procedure utilizes the **STANDARD STRIP METHOD** using the eXact iDip® 570 Smart Photometer System®. For tips on achieving best accuracy, and additional information regarding features of the eXact iDip® 570 photometer and the eXact iDip® app, please refer to the eXact iDip® Smart Guide. You can download a copy on our website at exactdip.com. **Test procedures can vary from test to test. Read full instructions and watch instructional video within the app.**

YOU WILL NEED

- eXact iDip® 570 photometer
- Your smartphone/tablet with the eXact iDip® app installed and 570 Hardness, Total High Fresh test purchased in the Store
- (1) eXact® Strip Micro High Range Total Hardness (Part No. 486656)
- Water sample for rinsing and testing
- Result from Total Alkalinity test

1 SELECT CUSTOMER

- Select **'Customers'** from the Home screen.
 - Choose customer from list
 - OR** Tap **'Add customer from contacts'** and choose customer from your contacts list
 - OR** Tap **'+'** to create a new customer
 - Android users: If no address is found, tap "No addresses found"
 - Verify customer has been selected
- Note: To take full advantage of the GPS and Data Storage features, each test result must be linked to a contact. Individual users may select their contact listing.*

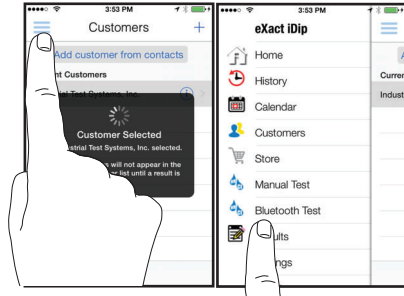


2 POWER ON EXACT IDIP® 570

Press the **ZERO/ON** button to power on the eXact iDip® 570 photometer.

3 SELECT BLUETOOTH TEST

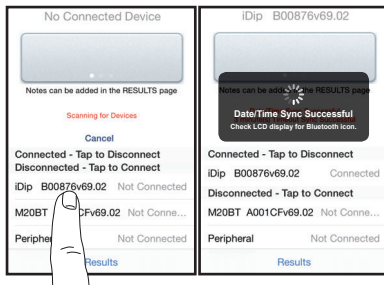
Tap the menu slide out **'≡'** and select **'Bluetooth Test'** from the choices shown.



4 CONNECT EXACT IDIP® 570

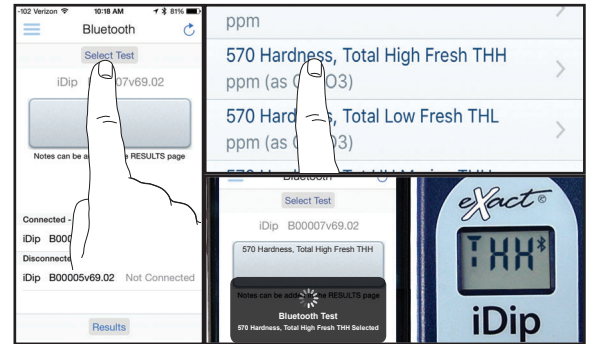
The eXact iDip® app will automatically connect to the most recently used eXact iDip® 570 photometer. If not, select your eXact iDip® 570 from the bottom of the screen.

Note: Always connect your eXact iDip® photometer via the Bluetooth® connection within the app. If you experience an issue connecting your device, check that your smartphone/tablet's Bluetooth® is turned on and your device is compatible.



5 SELECT TEST

Tap **'SELECT Test'** at the top and select **570 Hardness, Total High Fresh** (if this is not visible, purchase the test from the Store). The eXact iDip® 570 photometer and eXact iDip® app will both display the test selection for Total Hardness High.



6 FILL CELL

Before testing, rinse CELL and clean with brush thoroughly. Finally, rinse the cell 3 times with the water sample to be tested, then **FILL** cell to capacity to begin test (refer to video in app).



If Total Alkalinity value is greater than 220ppm, purchase eXact Strip Micro THH Conditioner and proceed to step 7a on back.

7 CAP CELL AND ZERO METER

Place the Cell Cover onto the CELL and press **ZERO/ON** and the eXact iDip® 570 photometer display reads **0PPM** indicating the meter is ready for testing.



8 REMOVE STRIP

Remove one eXact® Strip Micro High Range Total Hardness (Part No. 486656) and set in a dry, convenient place. Immediately replace cap on bottle.



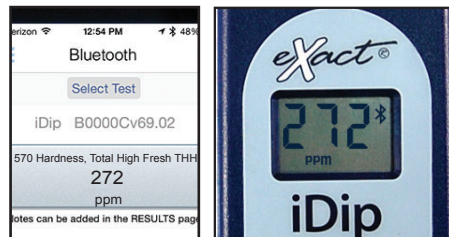
9 DIP STRIP

Press **READ** to initiate a 20 second countdown and simultaneously **DIP** the eXact® strip in the sample, gently touching the bottom of the cell. Use a gentle constant back and forth motion (2 strokes per second) until the timer displays "1". Remove and discard the strip.



10 CAP CELL AND READ RESULTS

Place the Cell Cover onto the CELL and **READ** result displayed as Total Hardness (as CaCO₃).



11 CLEAN CELL WITH BRUSH

After testing, rinse CELL immediately and clean with brush to remove reagents which coat the CELL wall.



7a THH CONDITIONER

If Total Alkalinity is greater than 220ppm, **YOU WILL NEED** to purchase eXact® Strip Micro THH Conditioner (Part No. 486666). If you already have THH Conditioner strips proceed to step 7b.

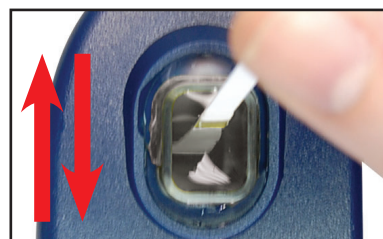
7b REMOVE STRIP

Remove one eXact® Strip Micro THH Conditioner (Part No. 486666) and set in a dry, convenient place. Immediately replace cap on bottle.



7c DIP STRIP

DIP the eXact® strip for 20 seconds in the sample, gently touching the bottom of the cell. Use a gentle constant back and forth motion (2 strokes per second) until the timer displays "1". Remove and discard the strip.



7d CAP CELL AND ZERO METER

Place the Cell Cover onto the CELL and press **ZERO/ON** and the eXact iDip® photometer display reads 0PPM indicating the meter is ready for testing. Proceed to Step 8.

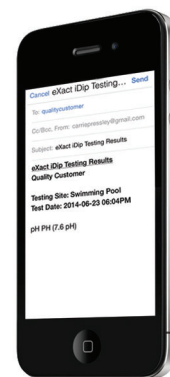


TIPS

- Due to the manufacturing process, you may find one or two strips that are noticeably smaller or larger in width than the normal strips in the bottle. These should be discarded. Using these strips may give unreliable results.
- Before running test unlock 570 Total Hardness High by purchasing in the Store.
- Before running test, verify that the pH of the sample is approximately 7. If not, then adjust the pH to 7.
- Total Alkalinity must be in the range of 65-220ppm (as CaCO₃).
- This test is good for drinking water, pool water, tap water and not good for samples made with DI or Distilled water.
- To obtain optimal accuracy when testing in direct sunlight, use the Cell Cover when zeroing and reading the sample.
- It is recommended to use the Cell Cleaning Brush with water to clean the CELL after each test to remove reagents which coat the CELL wall.
- If Total Alkalinity is less than 65ppm, take measures to increase the Alkalinity to above 65ppm.
- Be careful while dipping the strip (step 9). Do not spill the sample from the CELL.

MANAGE YOUR RESULTS

Save, send, and share results instantly using the eXact iDip® app. For step-by-step instructions, refer to the eXact iDip® Smart Guide. You can download a pdf copy on-line at exactidip.com.



eXact iDip