



570 CALCIUM ULTRA HIGH MARINE TEST PROCEDURE

The 570 Calcium UH Marine test procedure utilizes the eExact® Strip Micro and eExact® Reagent to accurately achieve a Calcium (as CaCO₃) reading with the eExact iDip® 570 Smart Photometer System®. For tips on achieving best accuracy, and additional information regarding features of the eExact iDip® 570 photometer and the eExact iDip® app, please refer to the eExact iDip® Smart Guide. You can download a copy on our website at exactidip.com. **Test procedures can vary from test to test. Read full instructions and watch instructional video within the app.**

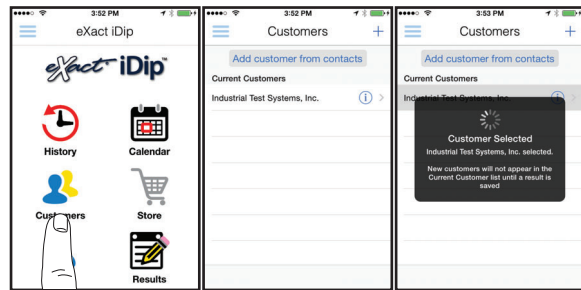
YOU WILL NEED

- eExact iDip® 570 photometer
- Your smartphone/tablet with the eExact iDip® app installed and 570 Calcium, UH Marine CAH test purchased in the Store
- (1) eExact® Strip Micro Calcium Hardness (Part No. 486668-A)
- (2) drops eExact® Reagent CAH (Part No. 486668-B)
- Water sample for rinsing and testing

1 SELECT CUSTOMER

- Select **'Customers'** from the Home screen.
 - Choose customer from list
OR Tap **'Add customer from contacts'** and choose customer from your contacts list
OR Tap **'+'** to create a new customer
- Android users: If no address is found, tap "No addresses found"
- Verify customer has been selected

Note: To take full advantage of the GPS and Data Storage features, each test result must be linked to a contact. Individual users may select their contact listing.



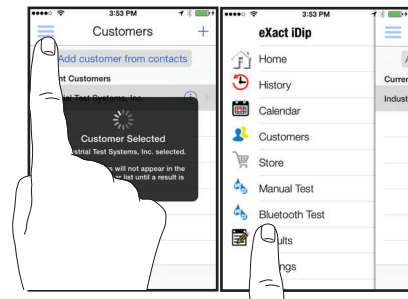
a b c

2 POWER ON EXACT IDIP® 570

Press the **ZERO/ON** button to power on the eExact iDip® 570 photometer.

3 SELECT BLUETOOTH TEST

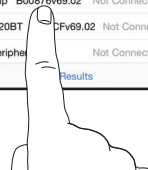
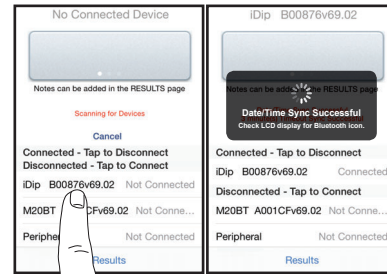
Tap the menu slide out **'≡'** and select **'Bluetooth Test'** from the choices shown.



4 CONNECT EXACT IDIP® 570

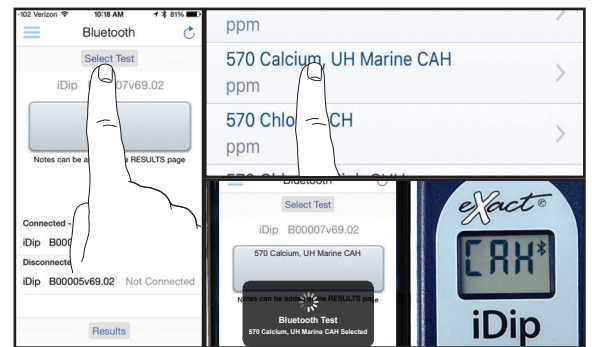
The eExact iDip® app will automatically connect to the most recently used eExact iDip® 570 photometer. If not, select your eExact iDip® 570 from the bottom of the screen.

Note: Always connect your eExact iDip® photometer via the Bluetooth® connection within the app. If you experience an issue connecting your device, check that your smartphone/tablet's Bluetooth® is turned on and your device is compatible.



5 SELECT TEST

Tap **'SELECT Test'** at the top and select **570 Calcium, UH Marine CAH** (if this is not visible, purchase the test from the Store). The eExact iDip® 570 photometer and eExact iDip® app will both display the test selection for Calcium Hardness.



6 FILL CELL (3.8ML)

Before testing, rinse CELL and clean with brush thoroughly. Finally, rinse the cell 3 times with the water sample to be tested. Then use the included 5mL syringe to draw exactly 3.8mL of the water sample to be tested (make sure there are no air bubbles in the syringe). Carefully and slowly transfer syringe contents to the CELL (refer to video in app).



7 SHAKE REAGENT

Shake the bottle of eXact® Reagent CAH.

8 ADD DROPS

Add **2 drops** of eXact® Reagent CAH (Part No. 486668-B). Ensure the reagent bottle remains vertical while adding drops.



9 CAP CELL AND ZERO METER

Place the Cell Cover onto the CELL and press **ZERO/ON** and the eXact iDip® 570 photometer display reads 0PPM indicating the meter is ready for testing.



10 REMOVE STRIP

Remove one eXact® Strip Micro Calcium Hardness (Part No. 486668-A) and set in a dry, convenient place. Immediately replace cap on bottle.



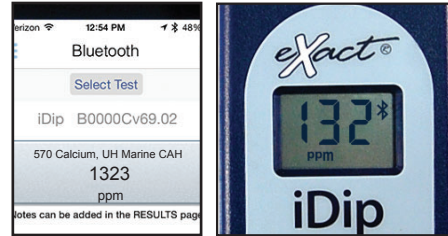
11 DIP STRIP

Press **READ** to initiate a 20 second countdown and simultaneously **DIP** the eXact® strip in the sample, gently touching the bottom of the cell. Use a gentle constant back and forth motion (2 strokes per second) until the timer displays "1". Remove and discard the strip.



12 CAP CELL AND READ RESULTS

Place the Cell Cover onto the CELL and **READ** result displayed as Calcium Hardness. Use the result as displayed on your smart device. Due to the limit of three digits on the eXact iDip® 570 photometer, the result on the LCD display will only show the first 3 digits of the final value. Refer to the iDip app in order to view the value in its entirety (ex. 132 = 1323 ppm).



13 CLEAN CELL WITH BRUSH

After testing, rinse CELL immediately and clean with brush to remove reagents which coat the CELL wall.



TIPS

- Due to the manufacturing process, you may find one or two strips that are noticeably smaller or larger in width than the normal strips in the bottle. These should be discarded. Using these strips may give unreliable results.
- Before running test unlock 570 Calcium UH, Marine CAH test by purchasing in the Store.
- **Important:** This test is volume dependent, so do not spill or splash sample out of cell. For optimal accuracy, the proper water sample to reagent ratio must be maintained.
- When filling the syringe in step 6, make sure there are no air bubbles present in the syringe.
- To obtain optimal accuracy when testing in direct sunlight, use the Mixing Cap/Cell Cover when zeroing and reading the sample.
- Even if all pads are not **fully immersed in water**, do not bend the strip. Make sure the strip touches the bottom of the CELL while dipping the strip.
- It is recommended to use the Cell Cleaning Brush with water to clean the CELL after each test to remove reagents which coat the CELL wall.
- Be careful while dipping the strip (step 10). Do not spill the sample from the CELL.
- The eXact® Reagent CAH color may change to pink over the course of time. This will not affect testing results.

MANAGE YOUR RESULTS

Save, send, and share results instantly using the eXact iDip® app. For step-by-step instructions, refer to the eXact iDip® Smart Guide. You can download a pdf copy on-line at exactidip.com.



eXact iDip

