

4XEM USB 3.1 NVMe External SSD

Enclosure 4XEM Part- 4XST237C



With its slim design 4XEM's external SSD enclosure was crafted with portability in mind. The enclosure can turn into an external data saver for multiple systems due to its ability to move with you and your work slow. Compatible with a variety of SSD sizes, USB versions and operating systems (Windows, Mac OS) this enclosure works within your needs. Ideal for data transfer and data recovery, this enclosure solves a variety of storage issues such as lack of ports, additional SSD use and easy adapter-less set-up.

**Problem it solves:** Recover your images and other important files from your dead devices without the fear of damage, with this mobile and sturdy enclosure.

**4XEM Products Are Available At Your Favorite Online Retailers**

**WWW.4XEM.COM**

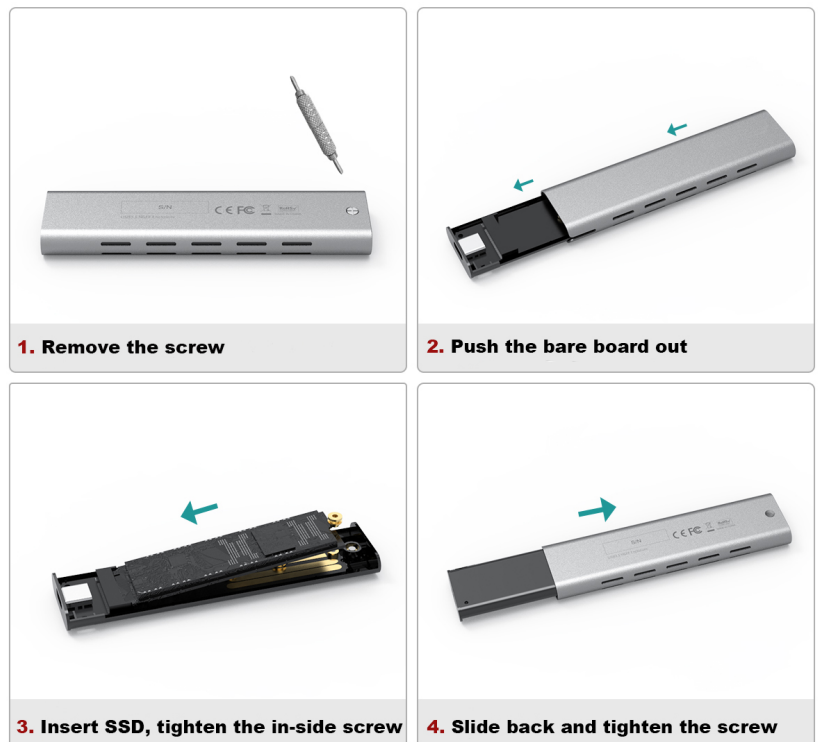
Contact Todd Schaus 4XEM sales Rep  
1-866-999-4936 Ext.104    [tschaus@4xem.com](mailto:tschaus@4xem.com)



## Features:

- Compatible with a wide range of SSD length choices (2230/2242/2260/2280mm etc. NGDD SSD)
- Compatible with USB-C or Thunderbolt 3
- Compatible with Windows 7 and later, Mac OS X, Linux, and Chrome OS
- SATA III operating mode
- Maximum Theoretical Data Transfer rate of 750 Mbps
- USB bus powered
- Power LED indicator
- Comes with Travel pouch

## Hardware Installation



## Application

- Home Office
- Office
- Mobile
- Storage expansion

4XEM Products Are Available At Your Favorite Online Retailers



Warranty Information	Warranty	1 Year
Features/Hardware	Compatible Drive Types Number of Drives Drive Installation Fan(s) Heatsink UASP Support TRIM Support 4Kn Support Chipset ID	SATA M.2 SSD 1 Fixed No No Yes Yes Yes VIA Labs - VL716
Connector(s) & Performance	Operating Mode Host Data Line Speed Host Connectors Drive Connectors Drive Operating Mode Maximum Data Transfer Rate*	USB 3.1 Gen 2 10 Gbps USB Type-C M.2 ('B' Keyed) SATA III 750 Mbps*
Software	OS Compatibility	Windows 7 or later Mac OS 10.2 or later Chrome OS Linux
Physical Characteristics	Color Shell Material LED Indicators Cable Type Cable Length Supported Drive Lengths Max Drive Height Product Height Product Width Product Length Weight of Product (Empty) Weight of Product (Occupied)	Grey Aluminum/Plastic Power/Activity: Blue Detachable 17.32 in [440 mm] 2230/2242/2260/2280 0.10 in [2.5 mm] 0.40 in [10.1 mm] 1.14 in [28.9 mm] 4.34 in [110.2 mm] 1.13 oz [32 g] 1.27 oz [36 g]
Power	Power Source Power Consumption	Bus Powered 7W (5V @ 1.5A)
Environmental	Operating Temperature Storage Temperature	32°F to 104°F [0°C to 40°C] @ 10%-90% RH (Non-Condensing) 14°F to 158°F [-10°C to 70°C] @ 10%-90% RH (Non-Condensing)
Packaging Information	Package Type Package Height Package Width Package Length Shipping (Package) Weight	Box 6.05 in [153.6 mm] 2.79 in [70.8 mm] 1.42 in [36.0 mm] 4.02 oz [114 g]
Special Notes / Requirements	Notes	"750 MBps is the theoretical maximum bandwidth available. Data throughput will be less due to overhead. Actual performance will also vary due to factors such as host processor, SSD used, and other devices sharing the same bus, etc. Real world performance is typically 550MBps sequential read and 550MBps sequential write. Not compatible with double sided SSDs or SSD with integrated heatsink. Occupied weight measured with Samsung EVO 860 500GB SSD."
What's in the Box	Included in Package	1x USB 3.1 Gen 2 Type-C NVMe SSD enclosure 1x Silicon Sleeve 1x USB Type-C to Type-A Cable 1x USB Type-A to Type-C Adaptor 1x User Manual 1x Travel Pouch 1x Screwdriver (Keychain)

\* Product appearance and specifications are subject to change without notice.

\* Same day shipping is only available for orders shipping within the United States.

