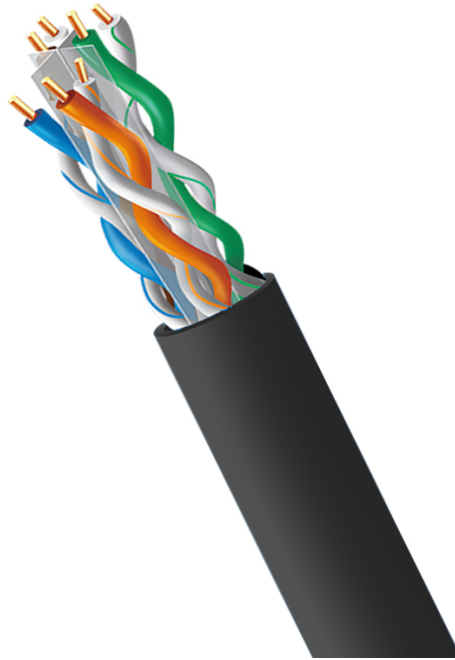


4XEM 1000ft CAT6 Pure Copper Riser Bulk Cable – Black

4XEM Part- 4XCAT61000RBK



Introducing 4XEM's 1000ft CAT6 Pure Copper Riser Bulk Cable is perfect for creating custom length horizontal network cable runs. This cable offers an exceptional value for jobs that require standards compliance at a cost-effective price. Elevate your connectivity with this high-performance cable, meticulously designed to meet the demands of modern networking environments.

Whether you're setting up a new network or upgrading an existing one, 4XEM's CAT6 Pure Copper Riser Bulk Cable provides the robust solution you need. Choose 4XEM for a reliable, high-quality Pure Copper Riser Bulk Cable that sets the standard for excellence in networking. Elevate your connectivity experience today!

**4XEM Products Are Available At Your Favorite Online Retailers**

**WWW.4XEM.COM**

Contact Todd Schaus 4XEM sales Rep  
1-866-999-4936 Ext.104    [tschaus@4xem.com](mailto:tschaus@4xem.com)



## Features

- 1000ft cable length – connector free
- Pull-box packaging
- Cat6 – 550MHz cable rating
- High-performance networking – higher bandwidth than CAT5E
- Pure copper construction – solid core
- 24 AWG
- Riser-rated for safe vertical installations in buildings
- Black color
- Ideal for new network setups or upgrades

## Application

- Home office
- Small business
- Home Internet
- Networking

**4XEM Products Are Available At Your Favorite Online Retailers**





**DATA SHEET**

Warranty Information	Warranty	Lifetime
Performance	Cable Rating	CAT6 - 550 MHz
Hardware	Cable Jacket Material Fire Rating	PVC (Polyvinyl Chloride) CMR - Communications Multpurpose Cable, Riser (Suitable for In-Wall)
Physical Characteristics	Color Conductor Material Conductor Core Wire Gauge Shielded Twisted Pair Divider Cable OD Cable Length Weight of Product	Black Pure Copper Solid 24 AWG No Yes 0.22 in [5.8 mm] 1000 ft [304.9 m] 20.13 lbs [9.13 kg]
Packaging Information	Package Type Package Height Package Width Package Length Shipping (Package) Weight	Pull-Box 19.88 in [505 mm] 16.34 in [415 mm] 8.07 in [205 mm] 20.13 lbs [9.13 kg]
What's in the Box	Included in Package	1000 ft Roll of Black C6 Riser Pure Copper Bulk Cable

\* Product appearance and specifications are subject to change without notice.

\* Same day shipping is only available for orders shipping within the United States.

**4XEM Products Are Available At Your Favorite Online Retailers**

**WWW.4XEM.COM**

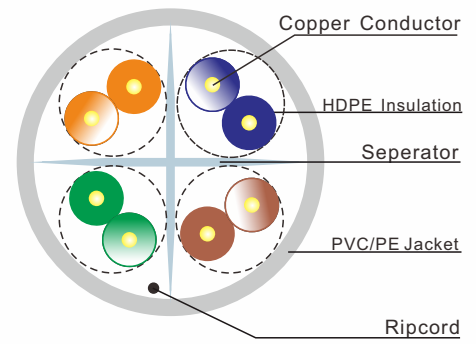
**Contact Todd Schaus 4XEM sales Rep  
1-866-999-4936 Ext.104    tschaus@4xem.com**



## Category 6 Cable

### KEY FEATURES

- > ANSI/TIA 568-2.D category 5e verified
- > Complies with ISO/IEC 11801 2nd Ed. category 6
- > UL listed CMP & CMR
- > Reach & RoHS 2 compliant
- > Supports PoE up to 100 Watts



### Category 6 Unscreened Cable



### ORDERING INFORMATION

PART NO.	DESCRIPTION
EM6-CMP6U	Category 6 U/UTP 4 pair 23 AWG solid cable, CMP, 1,000 ft (305 m)
EM6-CMR6U	Category 6 U/UTP 4 pair 23 AWG solid cable, CMR, 1,000 ft (305 m)

Specify cable jacket color by substituting in P/N for the following: **WH** **BU**

For other cable jacket colors, contact customer servic.

### ELECTRICAL CHARACTERISTICS

Electrical characteristics									
Frequency MHz	Impedance Ohm	RL ≥dB	Attenuation ≤ dB/100m	NEXT ≥ dB/100m	ELFEXT ≥ dB/100m	PS NEXT ≥ dB/100m	PS ELFEXT ≥ dB/100m	Delay Skew ns/100m	NVP
1	100±15	20.0	1.9	74.3	67.8	2.4	64.8	≤45	68%
4		23.0	3.7	65.3	55.8	63.3	57.7		
10		25.0	5.9	59.3	47.8	57.3	44.8		
16		25.0	7.5	56.3	43.7	54.3	40.7		
20		25.0	8.4	54.3	41.8	52.8	38.7		
31.25		23.6	10.6	51.9	37.9	49.9	34.9		
62.5		21.5	15.4	47.4	31.9	45.4	28.8		
100		20.1	19.8	44.3.3	27.8	42.3	24.8		
155		18.8	25.1	41.4	23.9	39.4	20.9		
200		18.0	29.0	39.8	21.8	37.8	18.7		
250	17.3	32.8	38.3	19.8	36.3	16.8			
* 350	100±20	16.3	39.8	36.1	16.9	34.1	13.9		
* 400		15.9	43.0	35.3	15.7	33.7	12.7		
* 450	100±22	15.5	46.3	34.5	14.7	32.5	11.7		
* 500		15.2	48.9	33.8	13.8	31.8	10.8		
* 550		14.9	51.8	33.2	12.9	31.2	9.9		

1: ANSI/TIA-568-C.2 horizontal cable transmission performance limits

2: SIGNAMAX guaranteed performance

3: Calculated, ACR=NEXT-IL

4: Calculated, PSACR=PSNEXT-IL

### SPECIFICATIONS

#### CONSTRUCTION

- Conductor Size:** 23 AWG
- Conductor Material:** Solid bare copper
- Pair Count:** 4 Pairs
- Plastic Materials:**
  - Plenum: CMP rated flame-retardant thermoplastic
  - Riser: CMR rated flame-retardant thermoplastic
- Overall Cable Diameter:** 0.18 in (5.2 mm)
- Packaging:** 1,000 ft (305 m)

#### ELECTRICAL

- Maximum Delay Skew:** 45 ns/100 m
- Input Impedance:** 100 15 Ohm (1-100 MHz)  
100 15 Ohm (101-250 MHz)