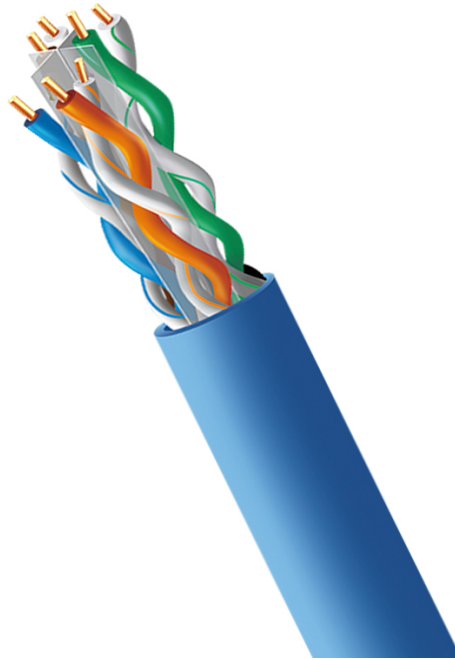


4XEM 1000ft CAT6 Pure Copper Plenum Bulk Cable – Blue

4XEM Part- 4XCAT61000PBL



Elevate your network infrastructure with the 4XEM 1000ft CAT6 Pure Copper Plenum Bulk Cable – a pinnacle of performance, safety, and reliability. Designed for superior connectivity, this cable ensures high-speed data transmission with a 250 MHz rating, guaranteeing a seamless networking experience. The plenum-rated design, compliant with CMP (Communications Multipurpose Cable, Plenum) standards, makes it ideal for installations in spaces requiring strict fire safety measures. Choose 4XEM for a reliable, high-quality Pure Copper Plenum Bulk Cable that sets the standard for excellence in networking. Elevate your connectivity experience today!

**4XEM Products Are Available At Your Favorite Online Retailers**

**WWW.4XEM.COM**

Contact Todd Schaus 4XEM sales Rep  
1-866-999-4936 Ext.104    [tschaus@4xem.com](mailto:tschaus@4xem.com)



## Features

- 1000ft cable length – connector free
- Pull-box packaging
- Cat6 – 250MHz cable rating
- High-performance networking
- Pure copper construction – solid core
- 23 AWG
- Plenum rated cable
- Blue cable color
- Ideal for new network setups or upgrades

## Application

- Home office
- Small business
- Home Internet
- Networking

**4XEM Products Are Available At Your Favorite Online Retailers**





**DATA SHEET**

Warranty Information	Warranty	Lifetime
Performance	Cable Rating	CAT6 - 250 MHz
Hardware	Cable Jacket Material Fire Rating	TPE (Thermoplastic elastomer) CMP - Communications Multipurpose Cable, Plenum (Suitable for In-Wall)
Physical Characteristics	Color Conductor Material Conductor Core Wire Gauge Shielded Twisted Pair Divider Cable OD Cable Length Weight of Product	Blue Pure Copper Solid 23 AWG No Yes 0.22 in [5.8 mm] 1000 ft [304.9 m] 20.13 lbs [9.13 kg]
Packaging Information	Package Type Package Height Package Width Package Length Shipping (Package) Weight	Pull-Box 19.88 in [505 mm] 16.34 in [415 mm] 8.07 in [205 mm] 20.13 lbs [9.13 kg]
What's in the Box	Included in Package	1000 ft Roll of Blue C6 Plenum Pure Copper Bulk Cable

\* Product appearance and specifications are subject to change without notice.

\* Same day shipping is only available for orders shipping within the United States.

**4XEM Products Are Available At Your Favorite Online Retailers**

**WWW.4XEM.COM**

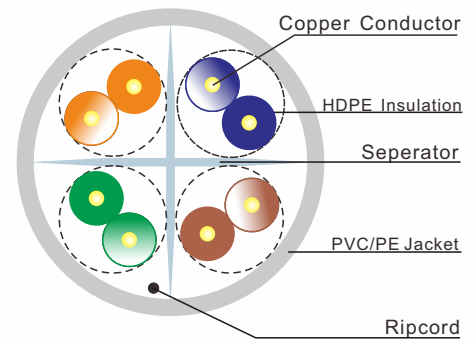
**Contact Todd Schaus 4XEM sales Rep  
1-866-999-4936 Ext.104    tschaus@4xem.com**



## Category 6 Cable

### KEY FEATURES

- > ANSI/TIA 568-2.D category 5e verified
- > Complies with ISO/IEC 11801 2nd Ed. category 6
- > UL listed CMP & CMR
- > Reach & RoHS 2 compliant
- > Supports PoE up to 100 Watts



### Category 6 Unscreened Cable



### ORDERING INFORMATION

PART NO.	DESCRIPTION
EM6-CMP6U	Category 6 U/UTP 4 pair 23 AWG solid cable, CMP, 1,000 ft (305 m)
EM6-CMR6U	Category 6 U/UTP 4 pair 23 AWG solid cable, CMR, 1,000 ft (305 m)

Specify cable jacket color by substituting in P/N for the following: **WH** **BU**

For other cable jacket colors, contact customer servic.

### ELECTRICAL CHARACTERISTICS

Electrical characteristics									
Frequency MHz	Impedance Ohm	RL ≥dB	Attenuation ≤ dB/100m	NEXT ≥ dB/100m	ELFEXT ≥ dB/100m	PS NEXT ≥ dB/100m	PS ELFEXT ≥ dB/100m	Delay Skew ns/100m	NVP
1	100±15	20.0	1.9	74.3	67.8	2.4	64.8	≤45	68%
4		23.0	3.7	65.3	55.8	63.3	57.7		
10		25.0	5.9	59.3	47.8	57.3	44.8		
16		25.0	7.5	56.3	43.7	54.3	40.7		
20		25.0	8.4	54.3	41.8	52.8	38.7		
31.25		23.6	10.6	51.9	37.9	49.9	34.9		
62.5		21.5	15.4	47.4	31.9	45.4	28.8		
100		20.1	19.8	44.3.3	27.8	42.3	24.8		
155		18.8	25.1	41.4	23.9	39.4	20.9		
200		18.0	29.0	39.8	21.8	37.8	18.7		
250	17.3	32.8	38.3	19.8	36.3	16.8			
* 350	100±20	16.3	39.8	36.1	16.9	34.1	13.9	≤45	68%
* 400		15.9	43.0	35.3	15.7	33.7	12.7		
* 450	100±22	15.5	46.3	34.5	14.7	32.5	11.7		
* 500		15.2	48.9	33.8	13.8	31.8	10.8		
* 550		14.9	51.8	33.2	12.9	31.2	9.9		

1: ANSI/TIA-568-C.2 horizontal cable transmission performance limits

2: SIGNAMAX guaranteed performance

3: Calculated, ACR=NEXT-IL

4: Calculated, PSACR=PSNEXT-IL

### SPECIFICATIONS

#### CONSTRUCTION

- Conductor Size:** 23 AWG
- Conductor Material:** Solid bare copper
- Pair Count:** 4 Pairs
- Plastic Materials:**
  - Plenum: CMP rated flame-retardant thermoplastic
  - Riser: CMR rated flame-retardant thermoplastic
- Overall Cable Diameter:** 0.18 in (5.2 mm)
- Packaging:** 1,000 ft (305 m)

#### ELECTRICAL

- Maximum Delay Skew:** 45 ns/100 m
- Input Impedance:** 100 15 Ohm (1-100 MHz)  
100 15 Ohm (101-250 MHz)