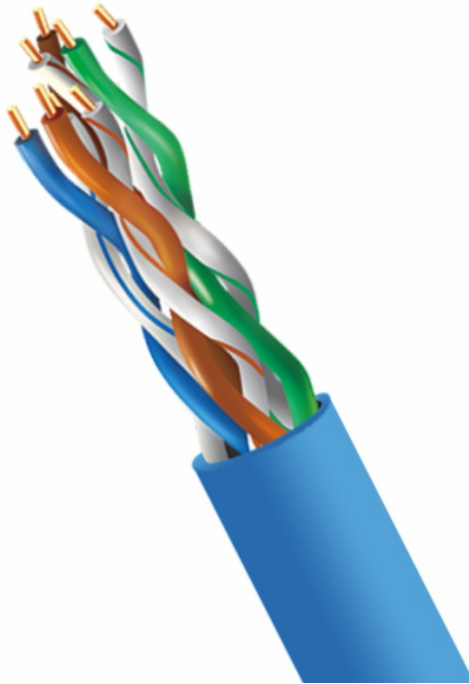


4XEM CAT 5E 1000FT (305m) Plenum Bulk Cable (Blue)

4XEM Part- 4XCAT5E1000PBL



Elevate your network infrastructure with the 4XEM 1000ft CAT5E Pure Copper Plenum Bulk Cable – a pinnacle of performance, safety, and reliability. Designed for superior connectivity, this cable ensures high-speed data transmission with a 100 MHz rating, guaranteeing a seamless networking experience. The plenum-rated design, compliant with CMP (Communications Multipurpose Cable, Plenum) standards, makes it ideal for installations in spaces requiring strict fire safety measures.

Choose 4XEM for a reliable, high-quality Pure Copper Plenum Bulk Cable that sets the standard for excellence in networking. Elevate your connectivity experience today!

4XEM Products Are Available At Your Favorite Online Retailers

WWW.4XEM.COM

Contact Todd Schaus 4XEM sales Rep
1-866-999-4936 Ext.104 tschaus@4xem.com



Features

- 1000ft cable length – connector free
- Pull-box packaging
- Cat5E – 100MHz cable rating
- High-performance networking
- Pure copper construction – solid core
- 24 AWG
- Plenum rated cable
- Blue cable color
- Ideal for new network setups or upgrades

Application

- Home office
- Small business
- Home Internet
- Networking

4XEM Products Are Available At Your Favorite Online Retailers

WWW.4XEM.COM

Contact Todd Schaus 4XEM sales Rep
1-866-999-4936 Ext.104 tschaus@4xem.com



Warranty Information	Warranty	1 Year
Performance	Cable Rating	Category 5E - 100 MHz
Hardware	Cable Jacket Material Fire Rating	TPE (Thermoplastic elastomer) CMP - Communications Multipurpose Cable, Plenum (Suitable for In-Wall)
Physical Characteristics	Color Conductor Material Conductor Core Wire Gauge Shielded Twisted Pair Divider Cable OD Cable Length Weight of Product	Blue Pure Copper Solid 24 AWG No No 0.18 in [4.7 mm] 1000 ft [304.9 m] 16.27 lbs [7.38 kg]
Packaging Information	Package Type Package Height Package Width Package Length Shipping (Package) Weight	Pull-Box 18.31 in [465 mm] 14.57 in [370 mm] 7.28 in [185 mm] 16.27 lbs [7.38 kg]
What's in the Box	Included in Package	1000 ft Roll of Blue C5E Plenum Pure Copper Bulk Cable

* Product appearance and specifications are subject to change without notice.

* Same day shipping is only available for orders shipping within the United States.

4XEM Products Are Available At Your Favorite Online Retailers

WWW.4XEM.COM

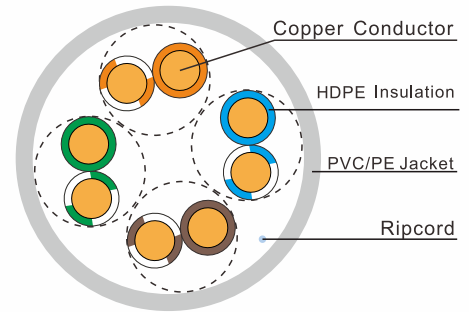
Contact Todd Schaus 4XEM sales Rep
1-866-999-4936 Ext.104 tschaus@4xem.com



Category 5e Cable

KEY FEATURES

- > ANSI/TIA 568-2.D category 5e verified
- > Complies with ISO/IEC 11801 2nd Ed. category 5e
- > UL listed CMP & CMR
- > Reach & RoHS 2 compliant
- > Supports PoE up to 60 Watts



Category 5e Unscreened Cable

ORDERING INFORMATION

PART NO.	DESCRIPTION
EM-CMP5U	Category 5e U/UTP 4 pair 24 AWG solid cable, CMP, 1,000 ft (305 m)
EM-CMR5U	Category 5e U/UTP 4 pair 24 AWG solid cable, CMR, 1,000 ft (305 m)

Specify cable jacket color by substituting in P/N for the following: **WH** **BU** **GR** **BK**

For other cable jacket colors, contact customer service.

ELECTRICAL CHARACTERISTICS

Electrical characteristics								
Frequency MHz	Impedance Ohm	RL ≥dB	Attenuation ≤ dB/100m	NEXT ≥ dB/100m	ELFEXT ≥ dB/100m	PS NEXT ≥ dB/100m	PS ELFEXT ≥ dB/100m	NVP
1	100±5	20.0	2.0	65.3	63.8	62.4	60.0	68%
4		23.0	4.1	56.3	51.7	54.3	48.7	
10		25.0	6.5	50.3	43.4	47.3	40.8	
16		25.0	8.2	47.3	39.6	44.2	36.7	
20		25.0	9.3	48.5	37.7	42.8	34.7	
31.25		23.6	11.6	42.9	33.9	39.9	30.9	
62.5		21.5	17.0	38.4	27.8	35.4	24.8	
100		20.1	22.0	35.3	23.8	32.3	20.8	
* 155	100±18	18.8	28.1	32.4	20.2	29.4	17.2	
* 200		18.0	32.4	30.8	18.0	27.8	15.0	
* 310	100±22	16.7	41.8	27.9	14.2	24.9	11.2	
* 350		16.3	44.9	27.1	13.1	24.1	10.1	

1: ANSI/TIA-568-2.D horizontal cable transmission performance limits

2: 4XEM guaranteed performance

3: Calculated, ACR=NEXT-IL

4: Calculated, PSACR=PSNEXT-IL

SPECIFICATIONS

CONSTRUCTION

Conductor Size: 24 AWG

Conductor Material: Solid bare copper

Pair Count: 4 Pairs

Plastic Materials:

Plenum: CMP rated flame-retardant thermoplastic

Riser: CMR rated flame-retardant thermoplastic

Overall Cable Diameter: 0.18 in (4.6 mm)

Packaging: 1,000 ft (305 m)

ELECTRICAL

Maximum Delay Skew: 45 ns/100 m

Input Impedance: 100+15 Ohm (1-100 MHz)